

The closing prices (Cours de clôture/Tagesschlusskurse) show results gained after taking into account:
 > all costs (trading, transactions, regulations, stock exchanges, taxes)
 > all management fees

Date/Datum	Global (USD)	Benchmark	Cours de clôture/Tagesschlusskurse		Benchmark
	CH0034642923 CT1248933 CORP	MSCI All Country World Index	Swiss (CHF)		Swiss Performance Index
			CH0036308838 CT1248891 CORP		
29.01.2010	450.43	286.33	2077.18		5570.19
28.01.2010	548.10		2073.67		
27.01.2010	468.60		2074.99		
26.01.2010	466.12		2085.66		
25.01.2010	467.60		2077.83		
22.01.2010	464.32		2082.26		
21.01.2010	482.86		2120.99		
20.01.2010	496.05		2128.99		
19.01.2010	507.58		2128.97		
18.01.2010	pas de cours/geschlossen		2133.96		
15.01.2010	495.82		2114.92		
14.01.2010	504.89		2118.65		
13.01.2010	504.52		2099.15		
12.01.2010	497.63		2087.52		
11.01.2010	507.25		2115.12		
08.01.2010	507.47		2117.80		
07.01.2010	502.95		2104.90		
06.01.2010	503.04		2099.43		
05.01.2010	504.28		2098.42		
04.01.2010	502.90		2095.01		
31.12.2009	490.28	299.44	2061.68		5626.40
31.12.2009	490.28	299.44	2061.68		5626.40

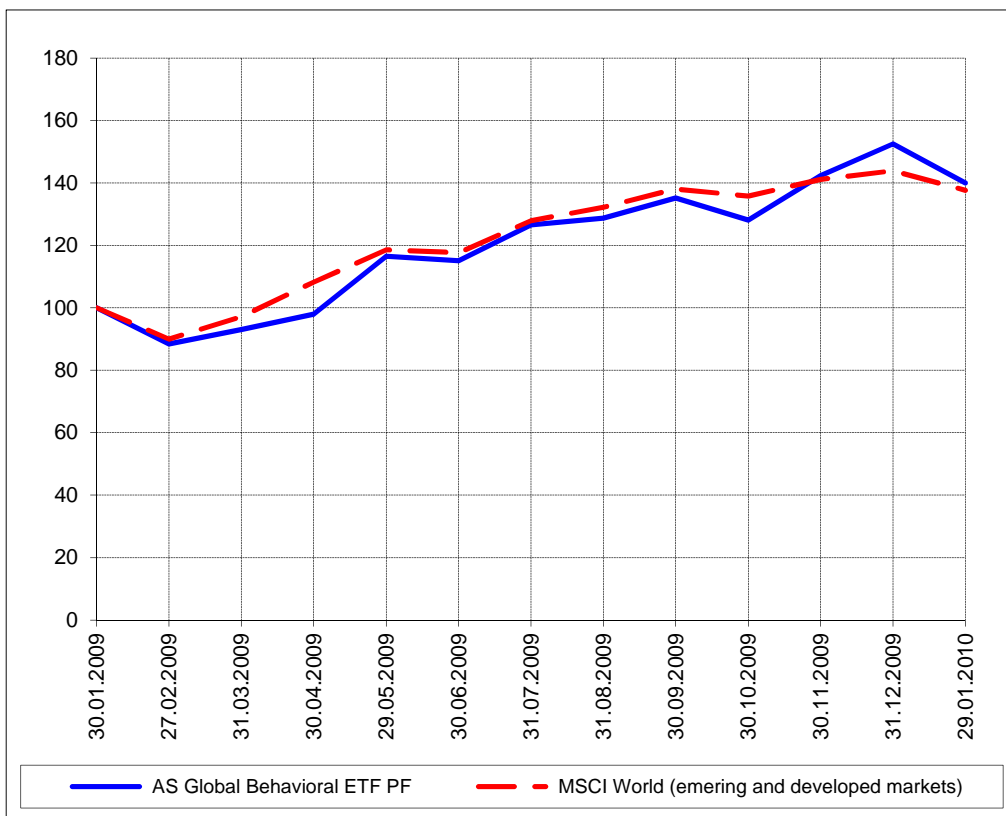
Portrait du Portefeuille Global / Global Portfolio im Überblick



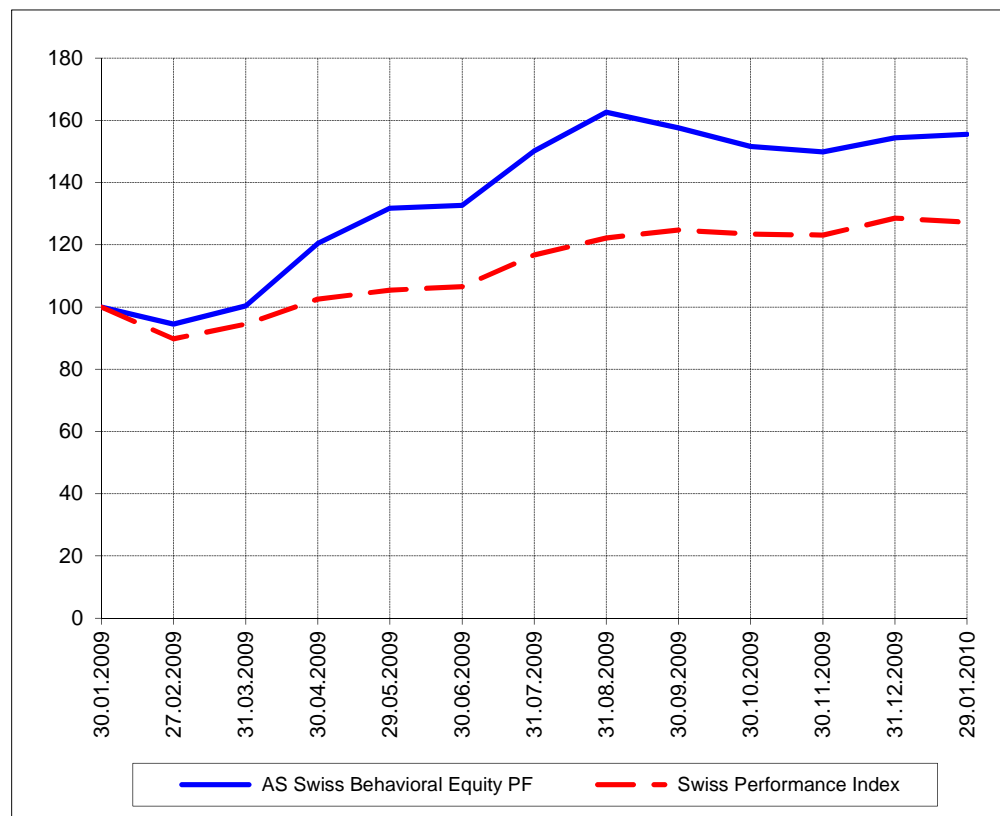
Portrait du Portefeuille Swiss / Swiss Portfolio im Überblick



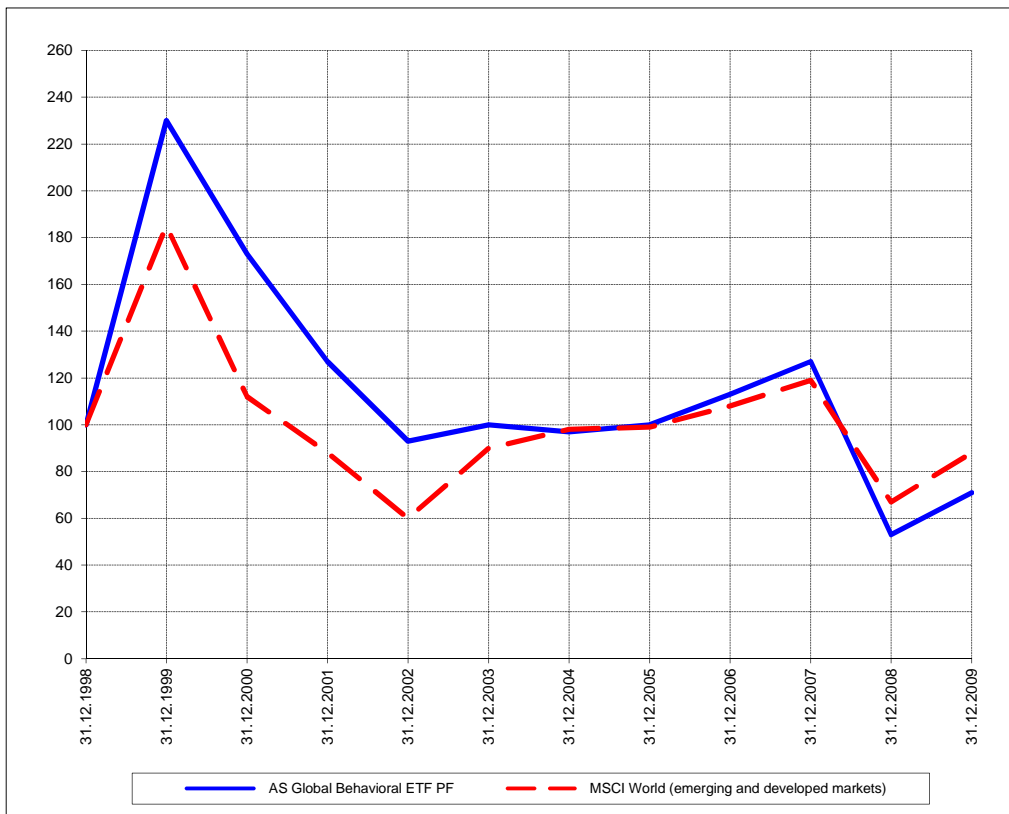
Perf. 12 derniers mois, indexée / Perf. 12 letzten Monaten, indexiert



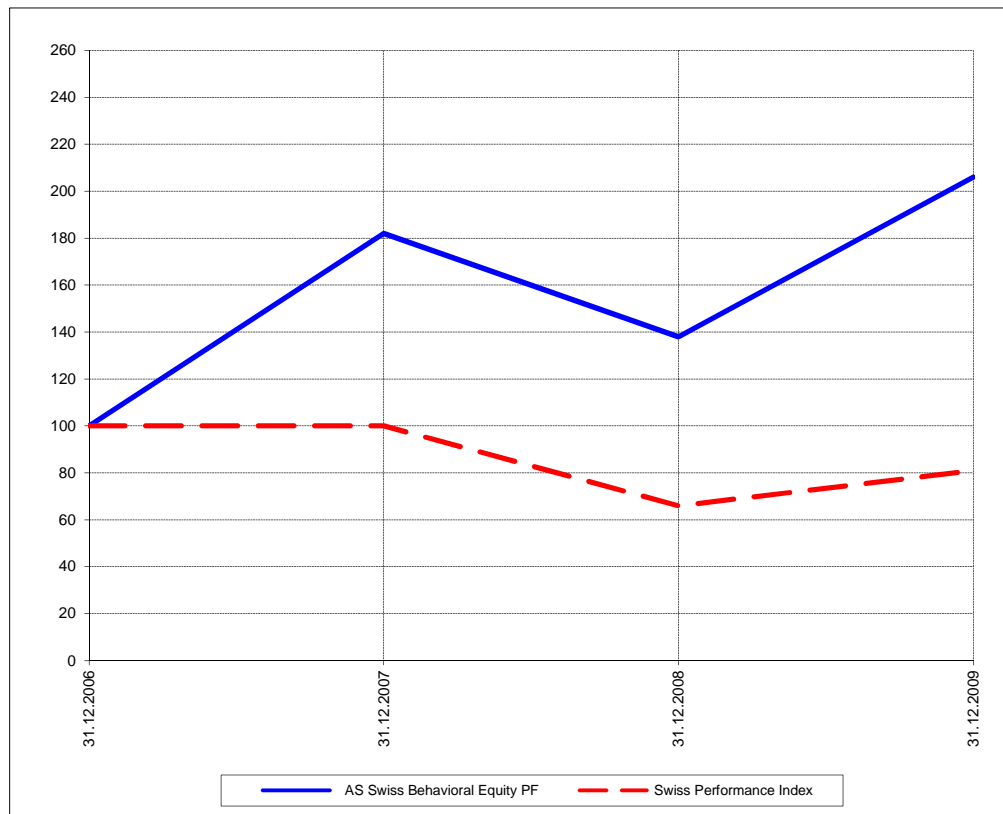
Perf. 12 derniers mois, indexée / Perf. 12 letzten Monaten, indexiert



Perf. depuis création / Perf. seit Lancierung: Global 01. 01. 1999



Perf. depuis création / Perf. seit Lancierung: Swiss 01. 01. 2007



Positions / Positionen différées de 3 mois / um 3 Monate verzögert	ProShares NASDAQ Index QLD	25.2 %
	iShares MSCI Brazil EWZ	16.4 %
	Market Vectors Russia RSX	15.9 %
	iShares MSCI Turkey TUR	14.8 %
	iShares MSCI South Korea EWY	9.9 %
	SPDR DJ Wilshire REIT RWR	5.3 %
	SPDR S&P Homebuilders XHB	5.1 %

XMTCH	65.9 %
Swatch	7.9 %
VZ	5.9 %
Meyer Burger	4.8 %
UBS	4.6 %
Kudelski	4.5 %
OC Oerlikon	4.0 %
Ci Com	2.2 %

Caractéristique / Merkmal outperformance

outperformance

Gestion / Management active with a Behavioral approach

active with a Behavioral approach

**Univers d'investissement /
Anlageuniversum** World with region, country and sector ETF's only
no Derivatives/Options; **no** Investment Vehicles;
no Private Equity **nor any** other Financial product
no commodities

Swiss Performance Index
no Derivatives/Options; **no** Investment Vehicles;
no Private Equity **nor any** other Financial product
no commodities