










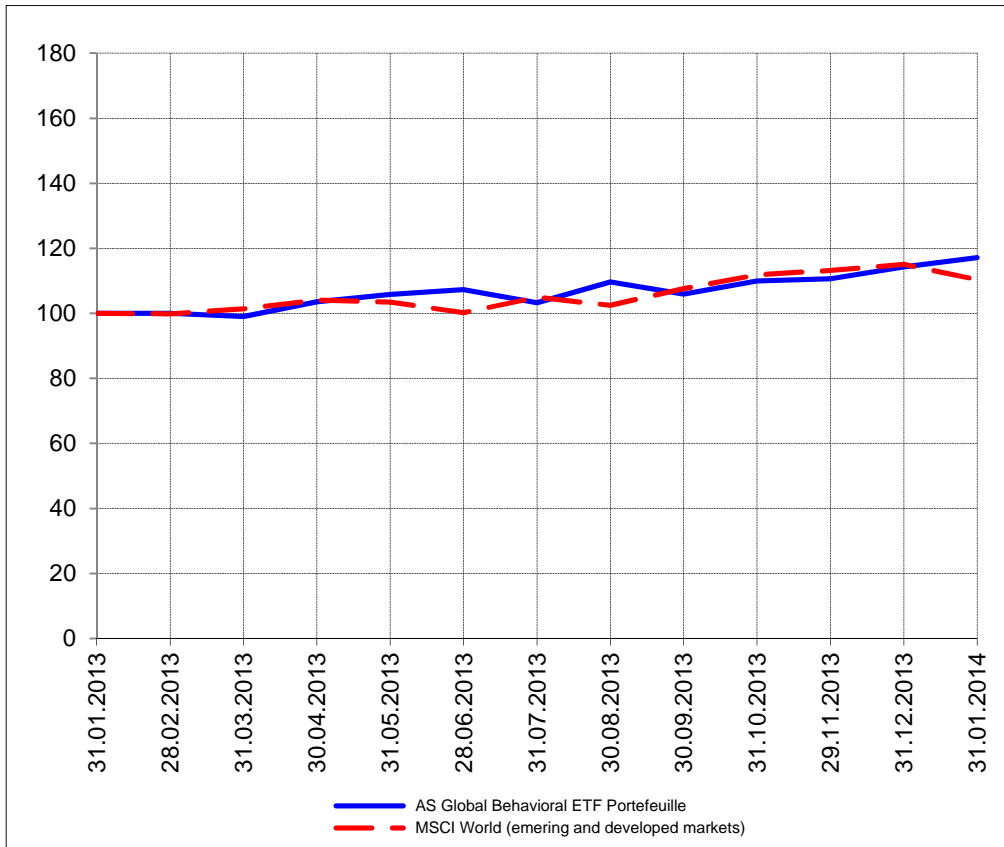
The closing prices (Cours de clôture/Tagesschlusskurse) show results gained after taking into account:  
 > all costs (trading, transactions, regulations, stock exchanges, taxes)  
 > all management fees

Date/Datum	<u>Sentiment-Exposure-Index</u> (approx.)		<u>GLOBAL</u>		<u>SWISS</u>	
	Investi / Investiert	Cash	NAV (USD)	Benchmark	NAV (CHF)	Benchmark
			CH0034642923 CT1248933 CORP	MSCI All Country World Index	CH0036308838 CT1248891 CORP	Swiss Market Index
31.01.2014			683.83	391.92	2711.72	8191.33
30.01.2014			688.44		2715.06	
29.01.2014			681.18		2694.84	
28.01.2014			687.48		2712.34	
27.01.2014			683.50		2693.63	
24.01.2014			687.86		2717.83	
23.01.2014			702.73		2787.85	
22.01.2014			709.50		2804.30	
21.01.2014			707.58		2806.88	
20.01.2014			pas de cours/geschlossen		2811.08	
17.01.2014			704.41		2811.08	
16.01.2014			707.13		2804.95	
15.01.2014			708.14		2794.62	
14.01.2014			704.09		2783.01	
13.01.2014			695.65		2793.01	
10.01.2014			706.27		2777.52	
09.01.2014			705.01		2749.45	
08.01.2014			705.23		2766.87	
07.01.2014			705.24		2764.61	
06.01.2014			701.07		2742.03	
03.01.2014			702.17		2743.64	
02.01.2014			702.98		pas de cours/geschlossen	
01.01.2014			pas de cours/geschlossen		pas de cours/geschlossen	
31.12.2013			709.76	408.55	pas de cours/geschlossen	
<b>31.12.2013</b>			<b>709.76</b>	<b>408.55</b>	<b>2724.70</b>	<b>8202.98</b>

Portrait du Portefeuille Global / Global Portfolio im Überblick

GLOBAL

Perf. 12 derniers mois, indexée / Perf. der 12 letzten Monate, indexiert

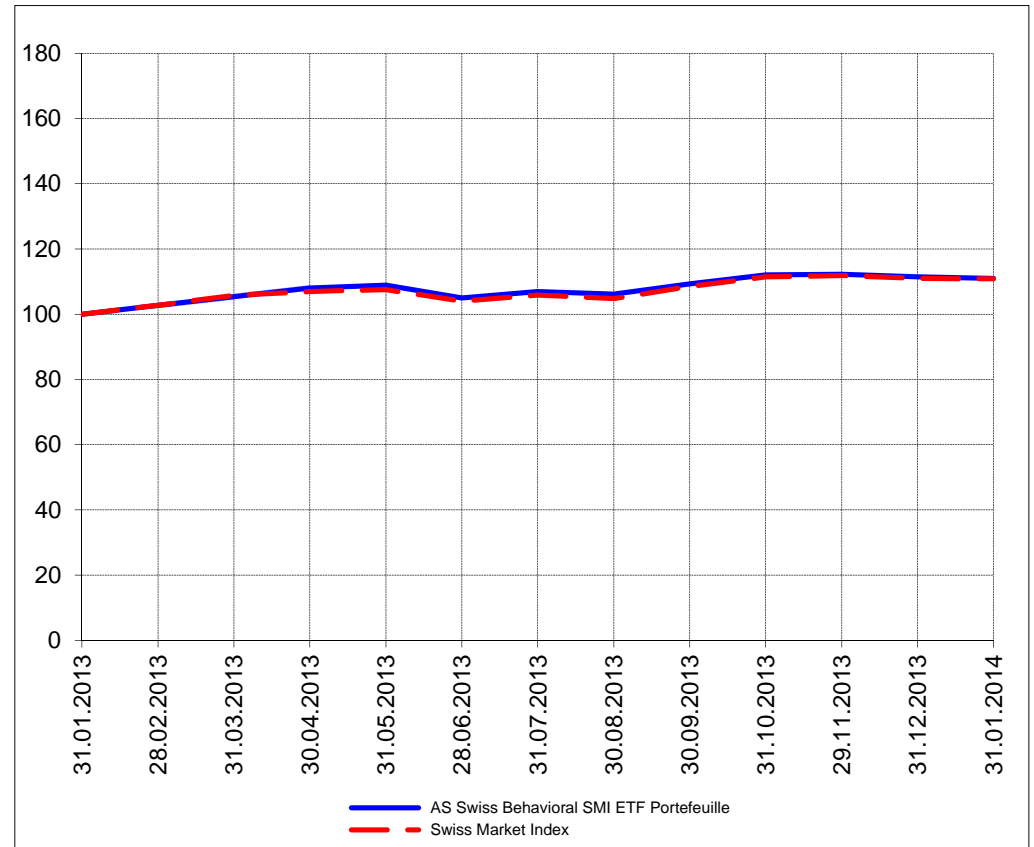


Portrait du Portefeuille Swiss / Swiss Portfolio im Überblick

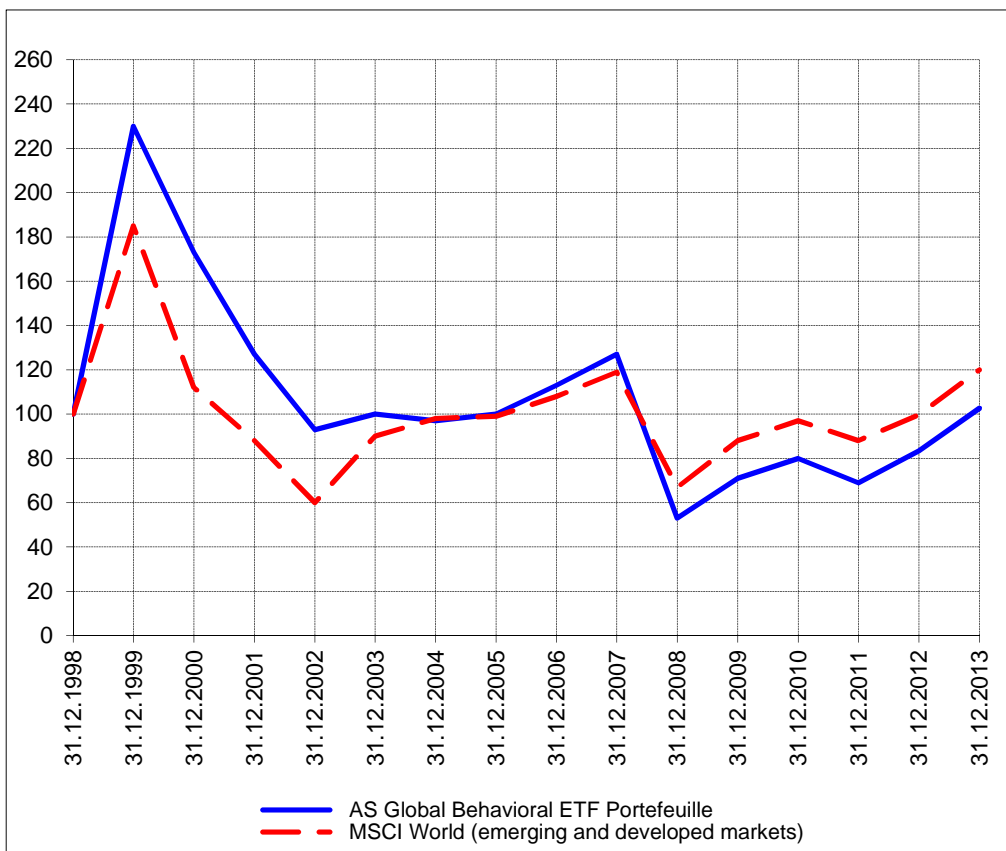
SWISS



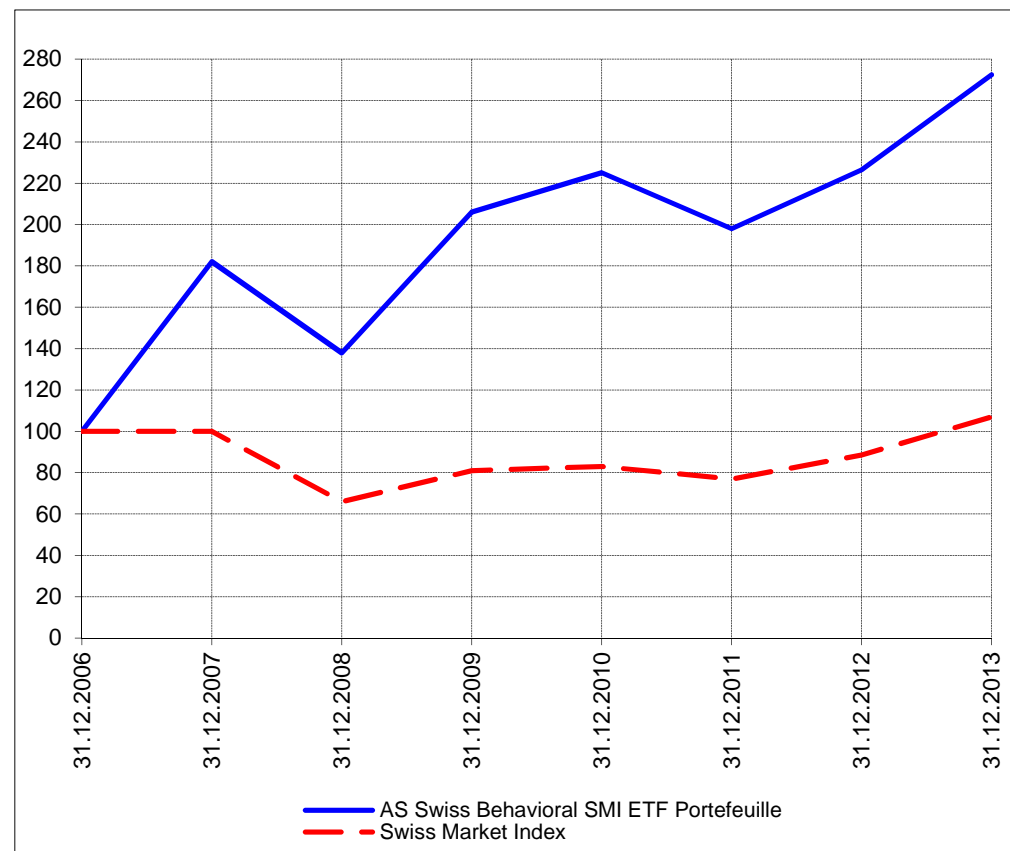
Perf. 12 derniers mois, indexée / Perf. der letzten 12 Monate, indexiert



Perf. depuis création / Perf. seit Lancierung: Global 01. 01. 1999



Perf. depuis création / Perf. seit Lancierung: Swiss 01. 01. 2007



<b>Positions / Positionen</b> différées de 3 mois / um 3 Monate verzögert	Ultra S&P 500 ProShares SSO	15.9%
	Guggenheim Solar TAN	15.3%
	SPDR Biotech XBI	10.9%
	Direxion Financial FAS	5.3%
	Direxion Energy ERX	5.3%
	ProShares Ultra QLD	4.8%

XMTCH 100.0%

<b>Préservation / Werterhalt</b>	Cash	42.6%
----------------------------------	------	-------

Cash 0.0%

**Caractéristique / Merkmal**  
1. Préservation / Werterhalt  
2. Outperformance

1. Préservation / Werterhalt  
2. Outperformance

**Gestion / Management**  
active with a Behavioral approach

active with a Behavioral approach

**Univers d'investissement /  
Anlageuniversum**  
World with region, country and sector ETF's only  
**no** Derivatives/Options; **no** Investment Vehicles;  
**no** Private Equity **nor any** other Financial product  
**no** commodities

Swiss Performance Index  
**no** Derivatives/Options; **no** Investment Vehicles;  
**no** Private Equity **nor any** other Financial product  
**no** commodities