


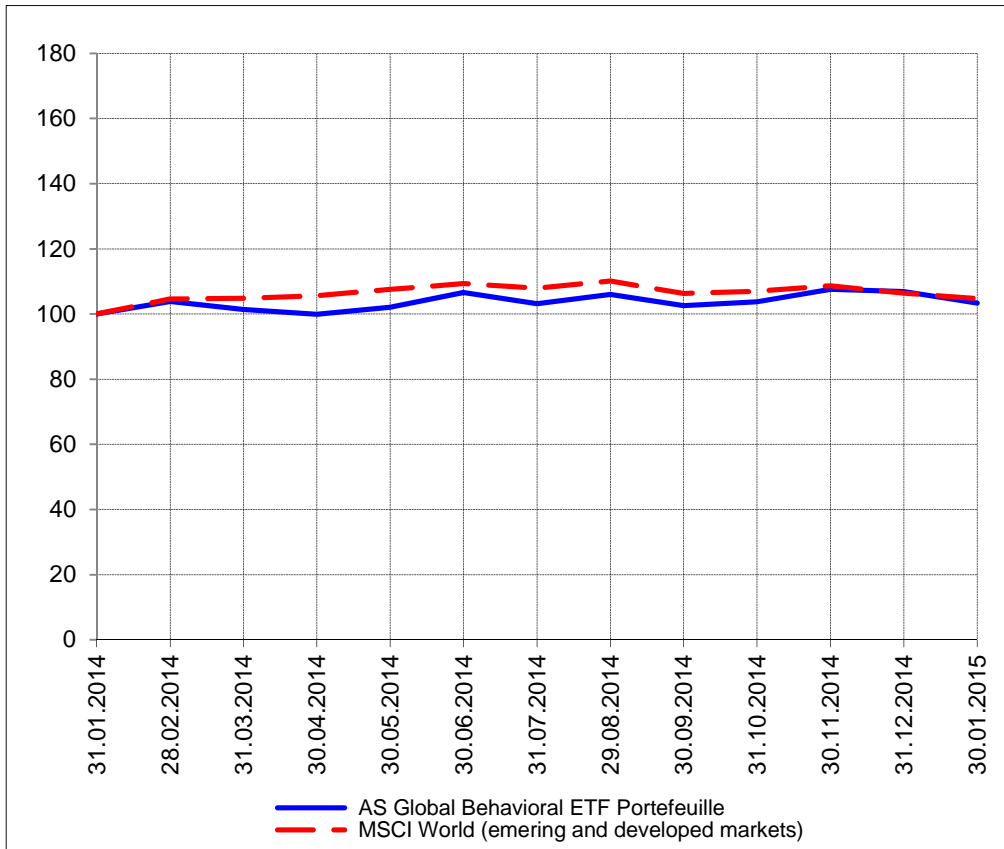
The closing prices (Cours de clôture/Tagesschlusskurse) show results gained after taking into account:
 > all costs (trading, transactions, regulations, stock exchanges, taxes)
 > all management fees

Date/Datum	<u>Sentiment-Exposure-Index</u> (approx.)		<u>GLOBAL</u>		<u>SWISS</u>	
	Investi / Investiert	Cash	NAV (USD) CH0034642923 CT1248933 CORP	Benchmark MSCI All Country World Index	NAV (CHF) CH0036308838 CT1248891 CORP	Benchmark Swiss Market Index
30.01.2015			706.57	410.33	2802.78	8385.13
29.01.2015			715.14		2813.69	
28.01.2015			710.13		2788.41	
27.01.2015			716.05		2806.22	
26.01.2015			727.63		2777.49	
23.01.2015			726.77		2734.11	
22.01.2015			728.68		2690.44	
21.01.2015			719.36		2688.59	
20.01.2015			715.43		2742.45	
19.01.2015			pas de cours/geschlossen		2734.77	
16.01.2015			712.14		2657.29	
15.01.2015			704.22		2822.69	
14.01.2015			710.89		3064.65	
13.01.2015			715.89		3087.70	
12.01.2015			718.24		3051.73	
09.01.2015			725.77		3035.13	
08.01.2015			730.81		3054.81	
07.01.2015			716.82		2971.49	
06.01.2015			709.45		2962.43	
05.01.2015			717.52		2986.56	
02.01.2015			729.84		pas de cours/geschlossen	
01.01.2015			pas de cours/geschlossen		pas de cours/geschlossen	
31.12.2014			730.70	417.12	2998.24	8983.37
31.12.2014			730.70	417.12	2998.24	8983.37

Portrait du Portefeuille Global / Global Portfolio im Überblick

GLOBAL

Perf. 12 derniers mois, indexée / Perf. der 12 letzten Monate, indexiert

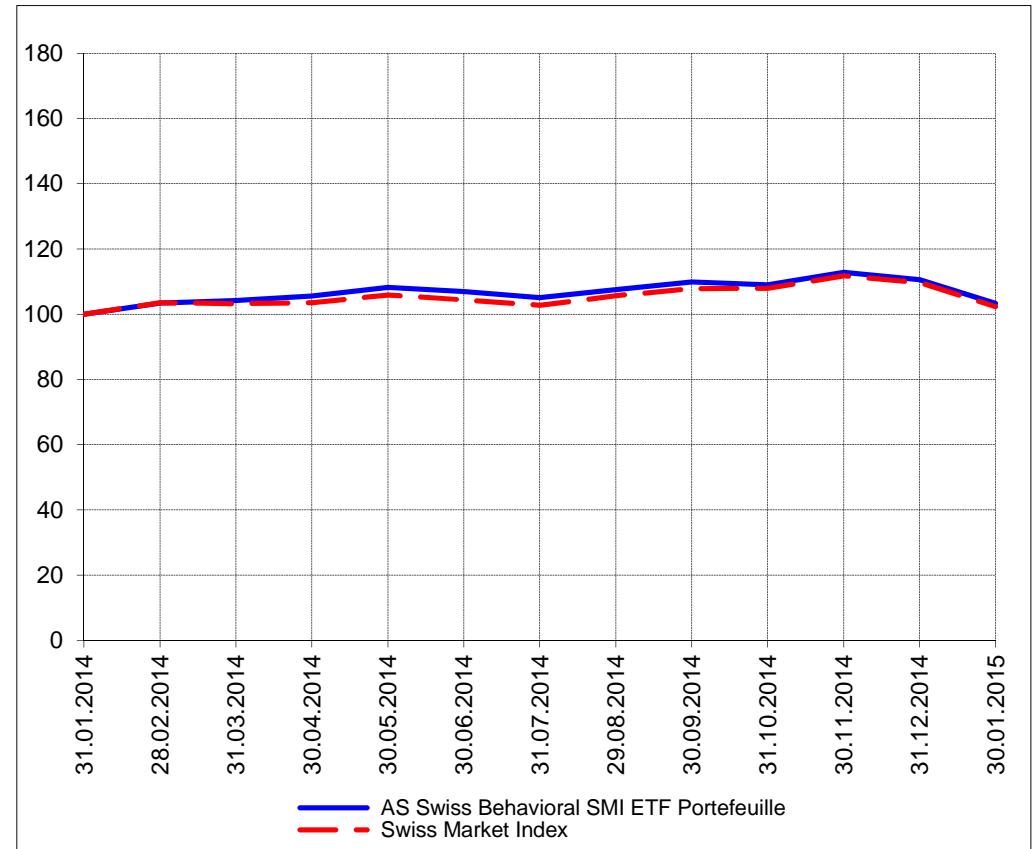


Portrait du Portefeuille Swiss / Swiss Portfolio im Überblick

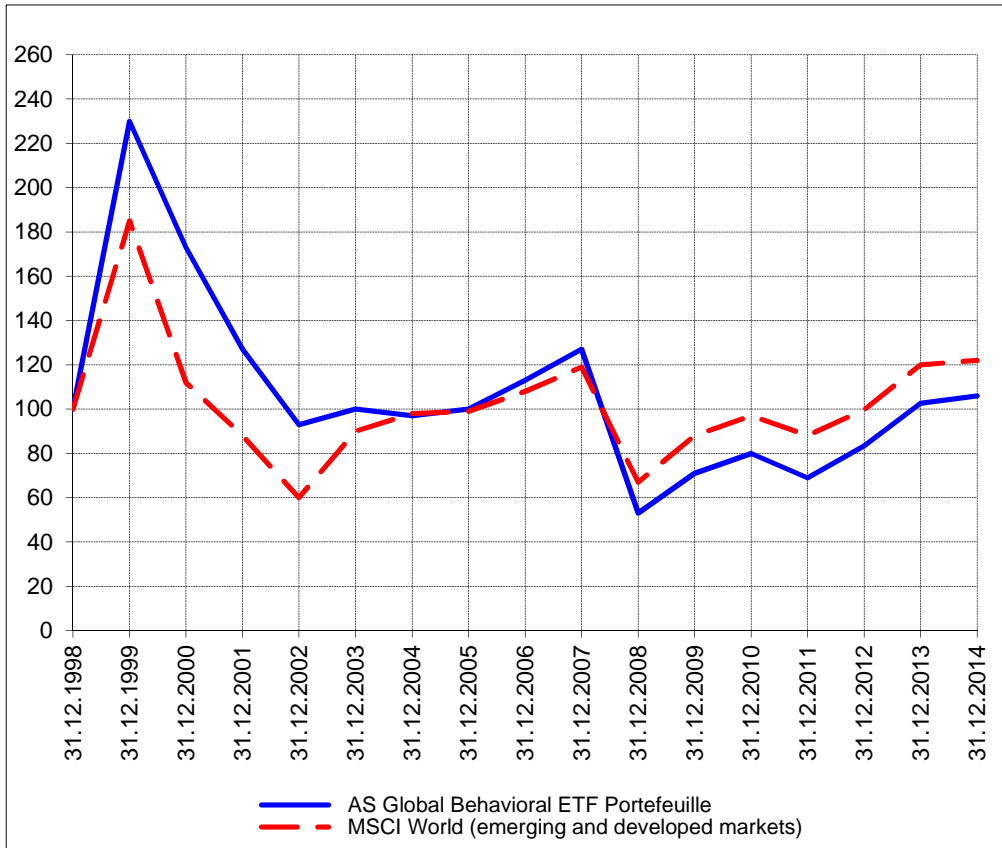
SWISS



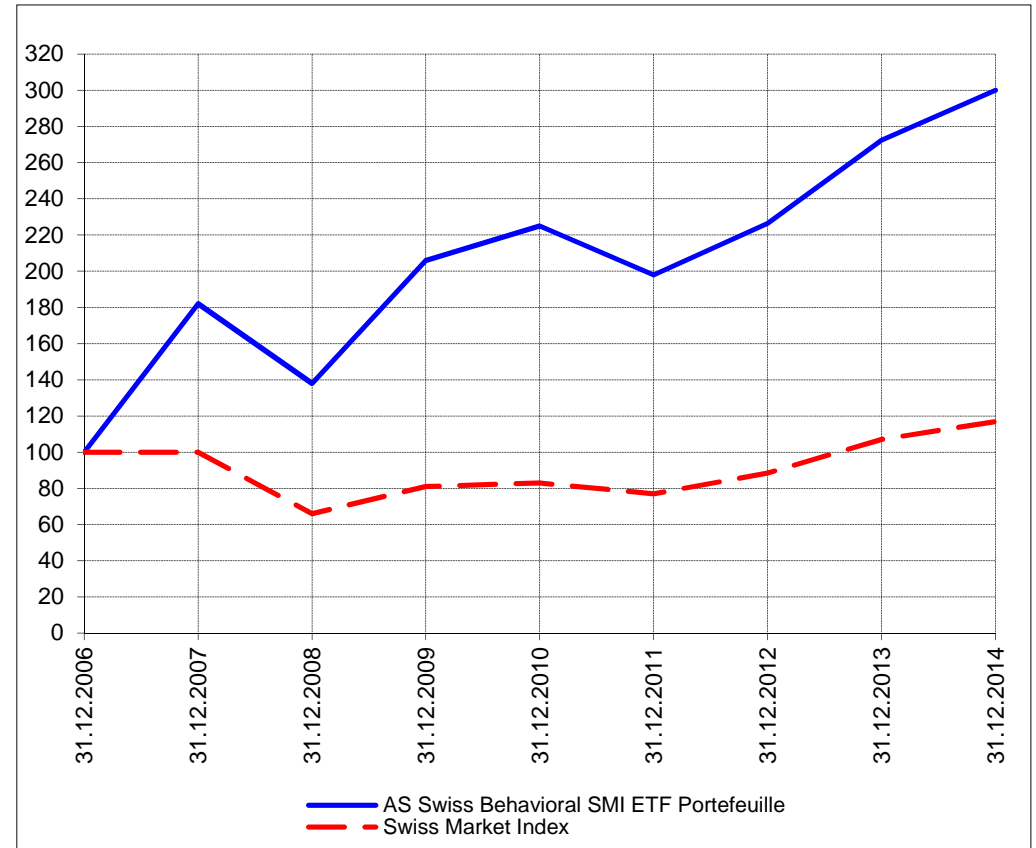
Perf. 12 derniers mois, indexée / Perf. der letzten 12 Monate, indexiert



Perf. depuis création / Perf. seit Lancierung: Global 01. 01. 1999



Perf. depuis création / Perf. seit Lancierung: Swiss 01. 01. 2007



Positions / Positionen
différées de 3 mois /
um 3 Monate verzögert

PowerShares QQQ	25.2%
SPDR S&P 500 SPY	17.8%
Ultra S&P 500 ProShares SSO	16.9%
iShares Semi Conductor SOXX	14.2%

XMTCH 82.9%

Préservation / Werterhalt Cash 25.9%

Cash 17.1%

Caractéristique / Merkmal

1. Préservation / Werterhalt
2. Outperformance

1. Préservation / Werterhalt
2. Outperformance

Gestion / Management active with a Behavioral approach

active with a Behavioral approach

**Univers d'investissement /
Anlageuniversum**

World with region, country and sector ETF's only
no Derivatives/Options; **no** Investment Vehicles;
no Private Equity **nor any** other Financial product
no commodities

Swiss Performance Index
no Derivatives/Options; **no** Investment Vehicles;
no Private Equity **nor any** other Financial product
no commodities