

The closing prices (Cours de clôture/Tagesschlusskurse) show results gained after taking into account:  
 > all costs (trading, transactions, regulations, stock exchanges, taxes)  
 > all management fees

Date/Datum	Cours de clôture/Tagesschlusskurse		Cours de clôture/Tagesschlusskurse	
	<b>Global (USD)</b> CH0034642923 CT1248933 CORP	<b>Benchmark</b> MSCI All Country World Index	<b>Swiss (CHF)</b> CH0036308838 CT1248891 CORP	<b>Benchmark</b> Swiss Performance Index
28.02.2011	578.84	344.82	2333.83	5952.30
25.02.2011	574.78		2306.32	
24.02.2011	564.93		2282.78	
23.02.2011	564.44		2295.98	
22.02.2011	569.27		2322.59	
21.02.2011	589.99		2316.96	
18.02.2011	589.99		2338.53	
17.02.2011	589.84		2346.48	
16.02.2011	588.10		2342.15	
15.02.2011	583.01		2324.77	
14.02.2011	585.05		2318.47	
11.02.2011	582.18		2308.99	
10.02.2011	576.23		2300.53	
09.02.2011	575.60		2311.03	
08.02.2011	577.83		2313.29	
07.02.2011	573.28		2303.25	
04.02.2011	568.72		2291.50	
03.02.2011	565.56		2269.98	
02.02.2011	564.25		2276.03	
01.02.2011	565.73		2271.90	
31.01.2011	553.86	335.58	2260.68	5814.95
<b>31.12.2010</b>	<b>550.55</b>	<b>330.64</b>	<b>2250.31</b>	<b>5790.62</b>

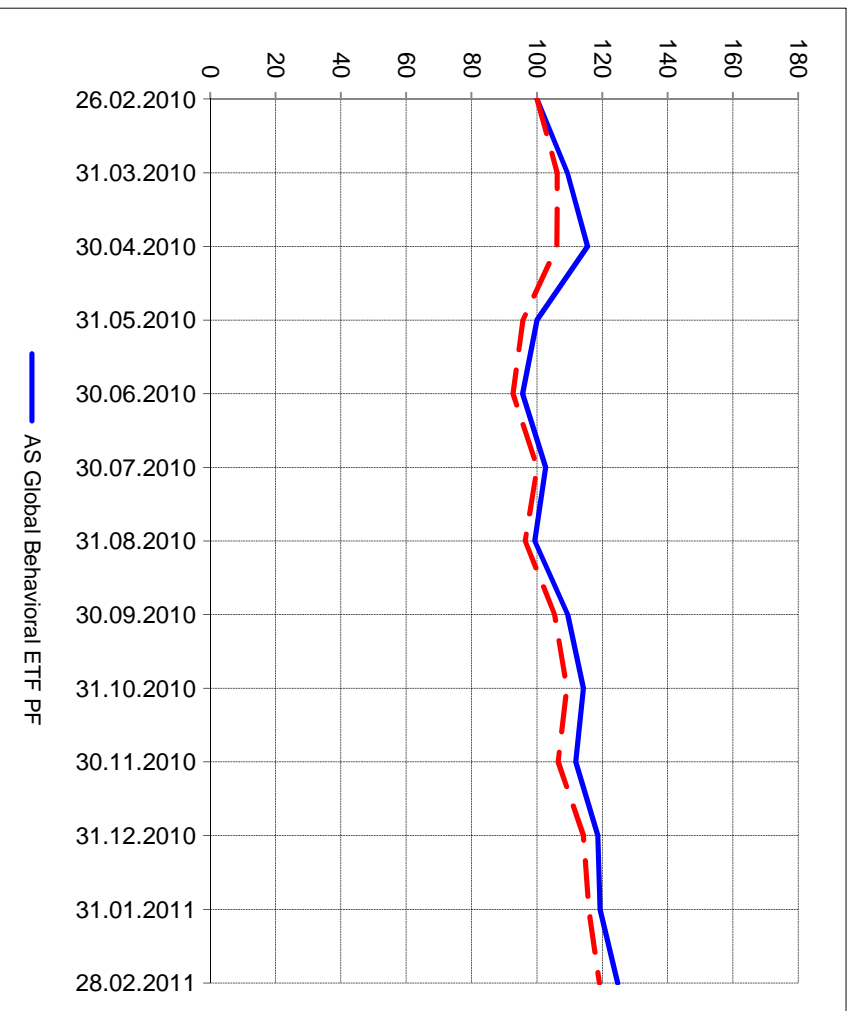
Portrait du Portefeuille Global / Global Portfolio im Überblick



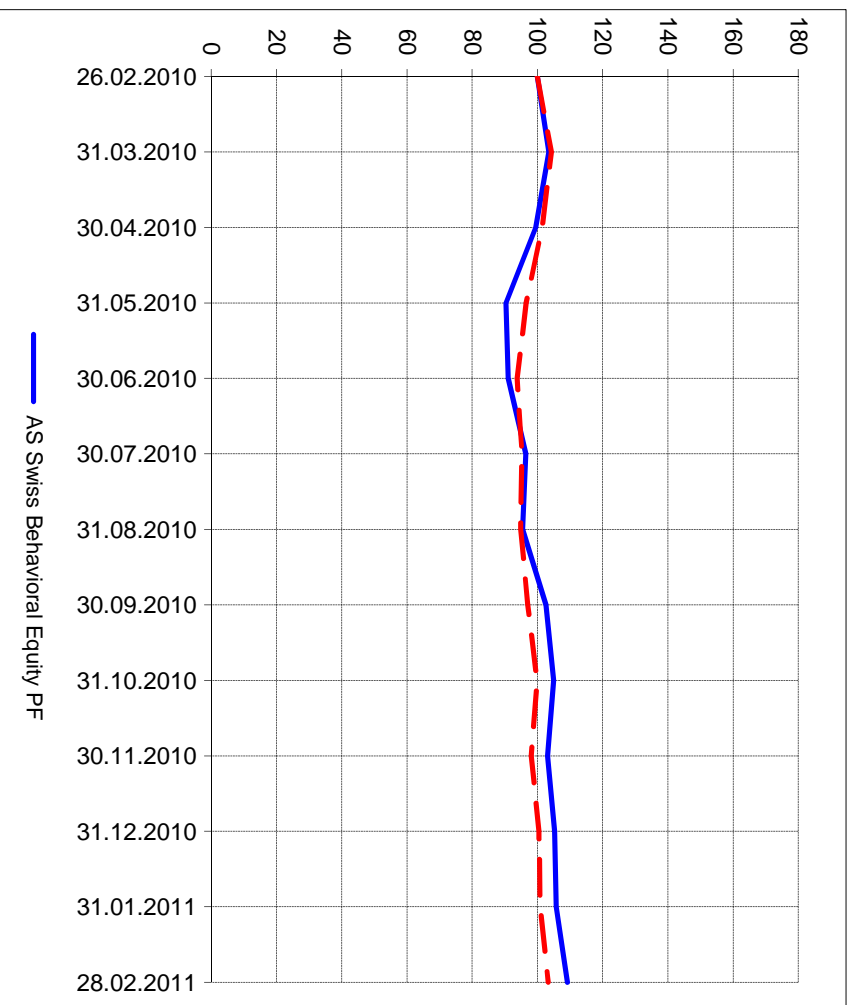
Portrait du Portefeuille Swiss / Swiss Portfolio im Überblick



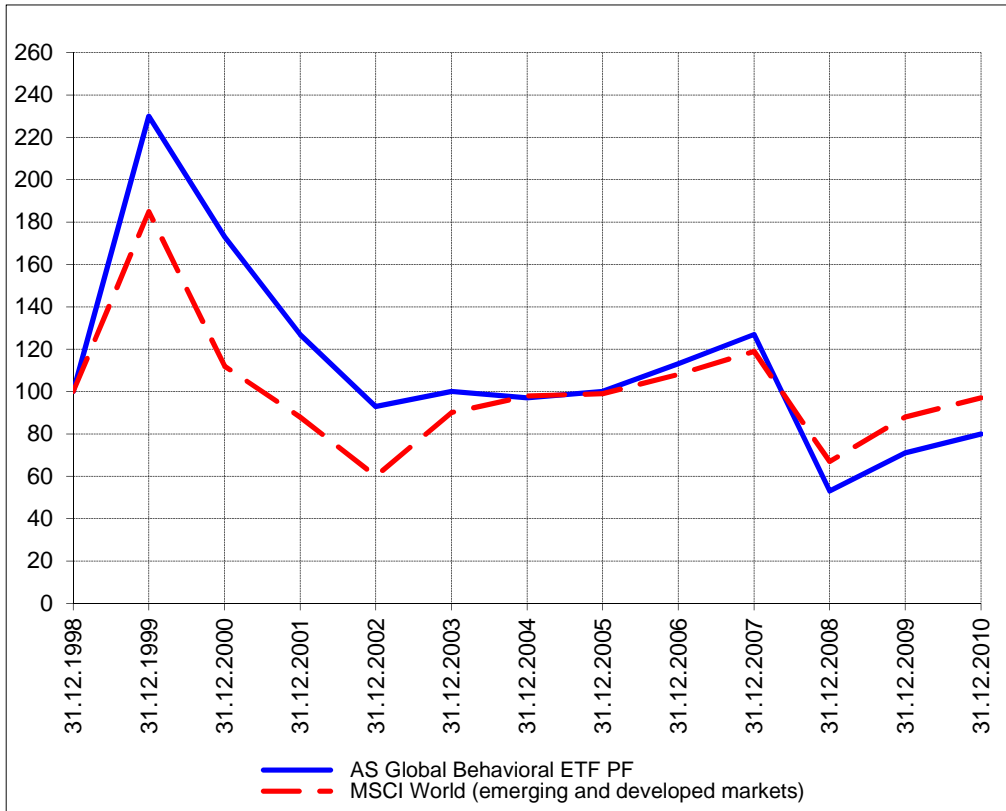
Perf. 12 derniers mois, indexée / Perf. 12 letzten Monaten, indexiert



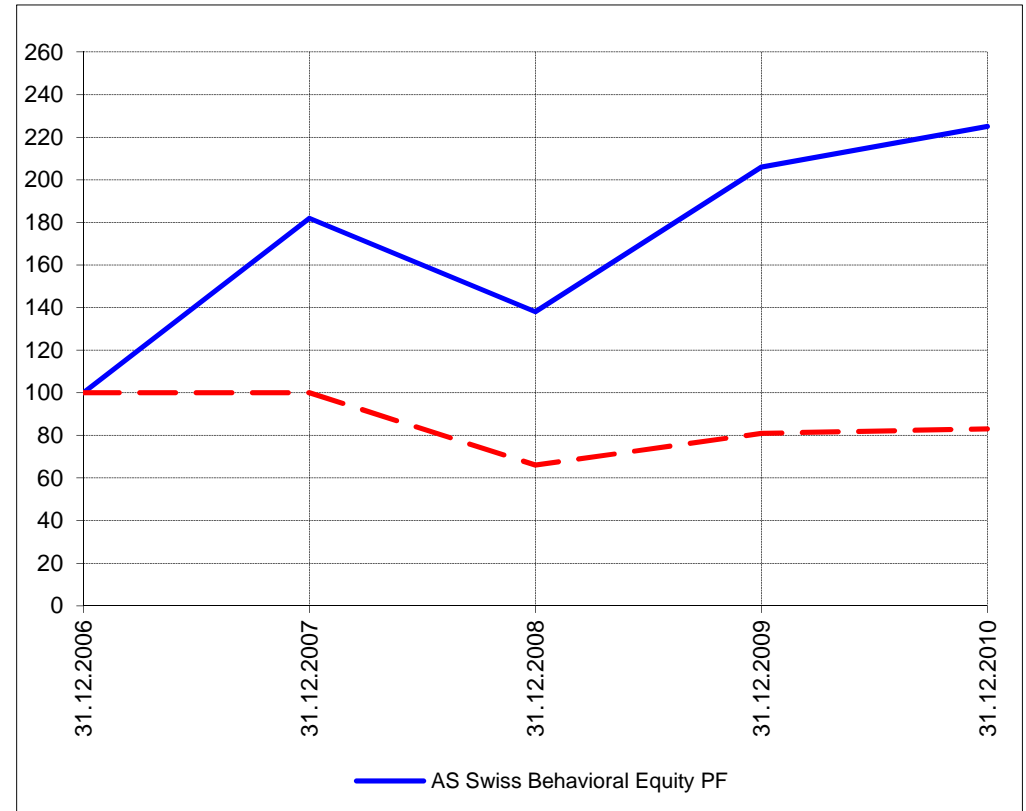
Perf. 12 derniers mois, indexée / Perf. 12 letzten Monaten, indexiert



Perf. depuis création / Perf. seit Lancierung: Global 01. 01. 1999



Perf. depuis création / Perf. seit Lancierung: Swiss 01. 01. 2007



<b>Positions / Positionen</b>	ProShares NASDAQ Index QLD	25.3%
différées de 3 mois /	Rydex S&P 500 RSU	25.0%
um 3 Monate verzögert	SPDR DJ Wilshire REIT RWR	7.3%

XMTCH	78.5%
Walter Meyer	2.9%
Schindler	2.9%
VZ	2.8%
Partnersgroup	2.7%
Richemont	2.7%
Swatch	2.6%
Zehnder	2.5%

**Caractéristique / Merkmal** outperformance

outperformance

**Gestion / Management** active with a Behavioral approach

active with a Behavioral approach

**Univers d'investissement / Anlageuniversum** World with region, country and sector ETF's only  
**no** Derivatives/Options; **no** Investment Vehicles;  
**no** Private Equity **nor any** other Financial product  
**no** commodities

Swiss Performance Index  
**no** Derivatives/Options; **no** Investment Vehicles;  
**no** Private Equity **nor any** other Financial product  
**no** commodities