

The closing prices (Cours de clôture/Tagesschlusskurse) show results gained after taking into account:
 > all costs (trading, transactions, regulations, stock exchanges, taxes)
 > all management fees

AS

Asset Services SA

Date/Datum	<u>Sentiment-Exposure-Index</u> (approx.)		<u>GLOBAL</u>		<u>SWISS</u>	
	Investi / Investiert	Cash	NAV (USD) CH0034642923 CT1248933 CORP	Benchmark MSCI All Country World Index	NAV (CHF) CH0036308838 CT1248891 CORP	Benchmark Swiss Market Index
28.02.2013			599.98	354.43	2509.45	7593.67
27.02.2013			599.93		2476.29	
26.02.2013			591.13		2476.29	
25.02.2013			584.12		2506.26	
22.02.2013			599.07		2490.32	
21.02.2013			594.28		2471.40	
20.02.2013			600.23		2513.81	
19.02.2013			610.48		2498.42	
18.02.2013			pas de cours/geschlossen		2471.40	
15.02.2013			607.61		2474.54	
14.02.2013			607.63		2468.26	
13.02.2013			608.73		2467.94	
12.02.2013			607.73		2449.09	
11.02.2013			602.36		2446.26	
08.02.2013			604.94		2437.47	
07.02.2013			601.74		2419.56	
06.02.2013			608.37		2450.58	
05.02.1013			609.12		2441.51	
04.02.2013			604.96		2425.96	
01.02.2013			611.49		2450.90	
31.01.2013			605.85	355.10	2443.78	7390.86
31.12.2012			576.59	339.75	2264.73	6822.44

Portrait du Portefeuille Global / Global Portfolio im Überblick



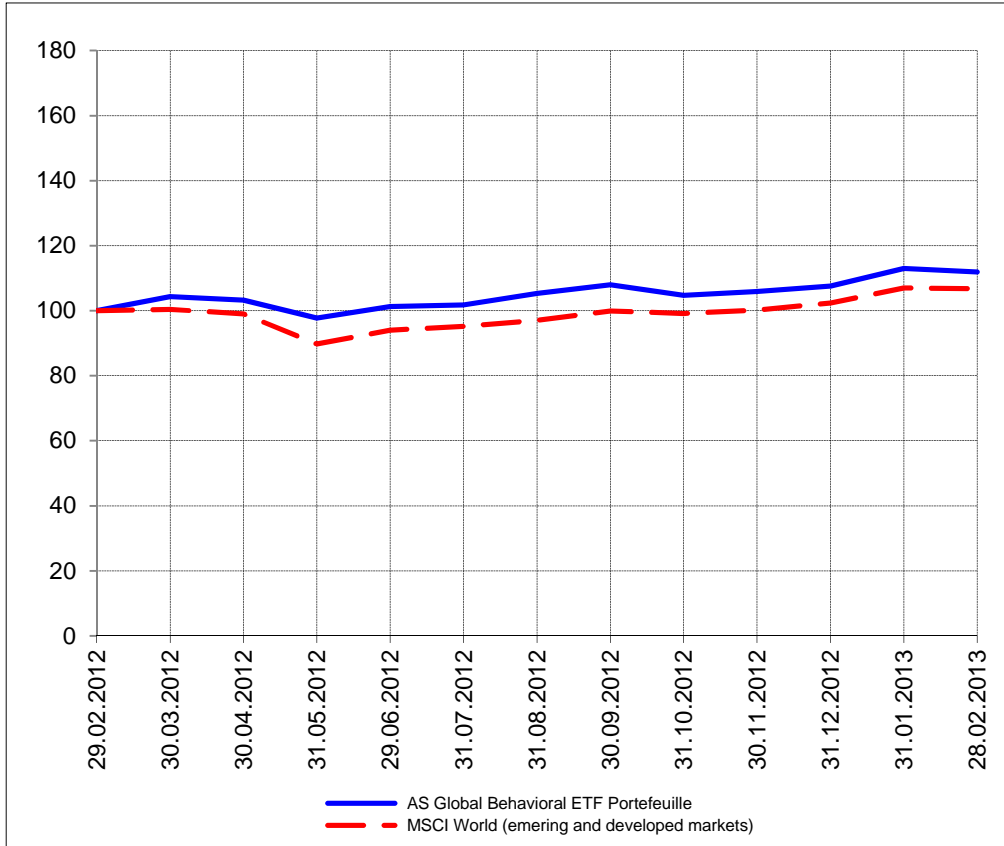
Portrait du Portefeuille Swiss / Swiss Portfolio im Überblick



GLOBAL



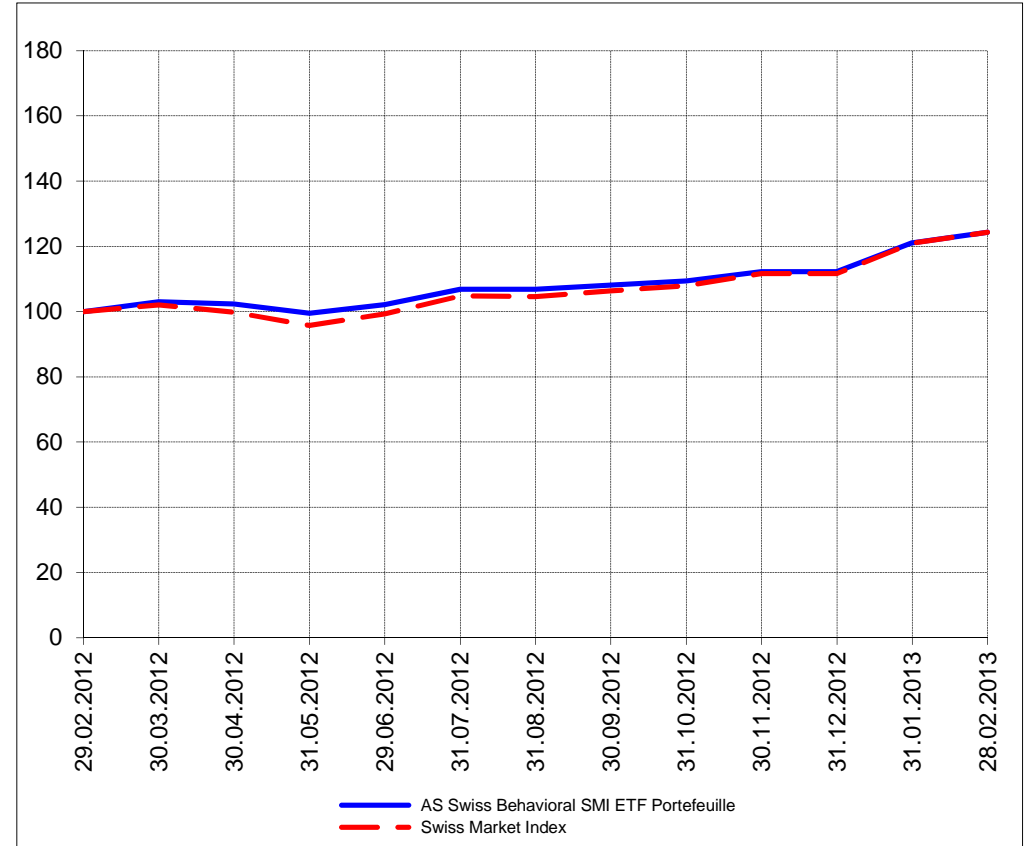
Perf. 12 derniers mois, indexée / Perf. der 12 letzten Monate, indexiert



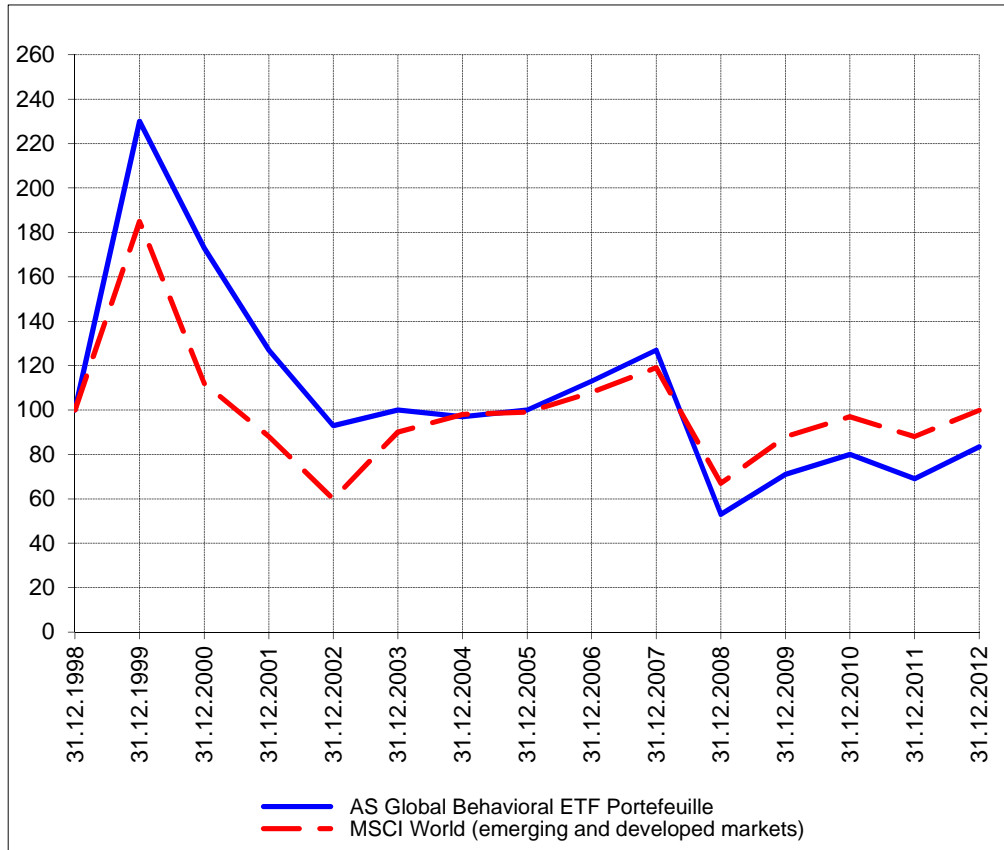
SWISS



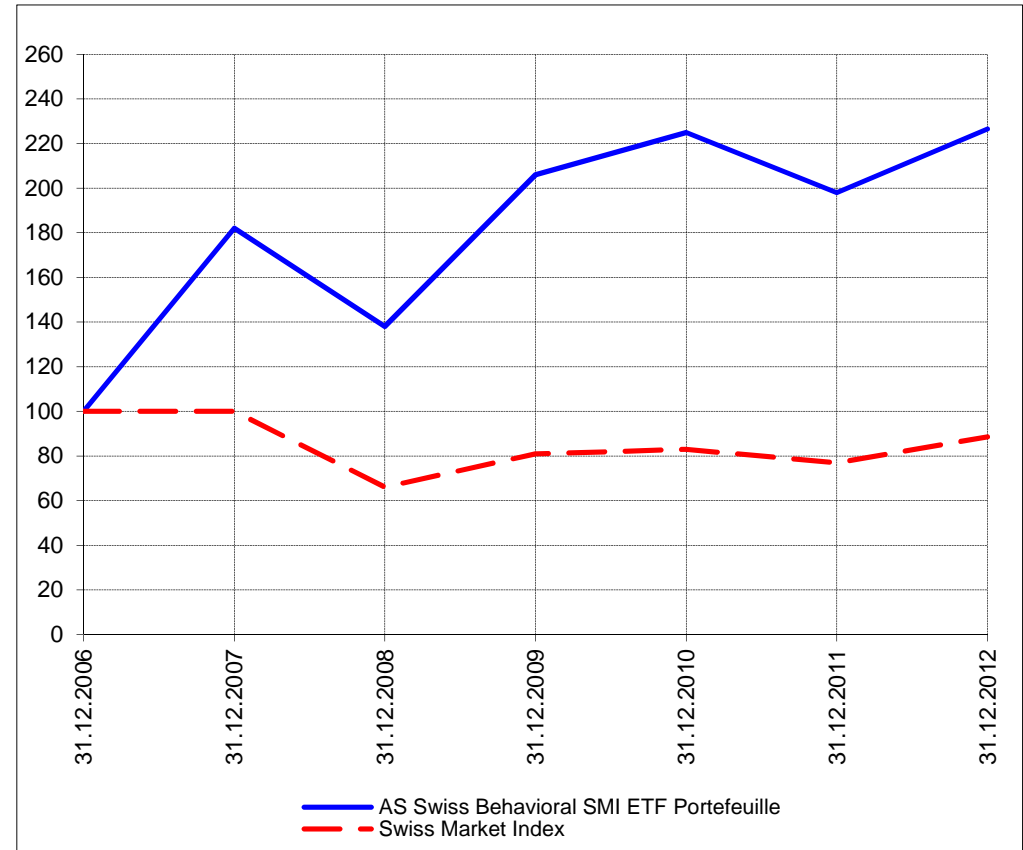
Perf. 12 derniers mois, indexée / Perf. der letzten 12 Monate, indexiert



Perf. depuis création / Perf. seit Lancierung: Global 01. 01. 1999



Perf. depuis création / Perf. seit Lancierung: Swiss 01. 01. 2007



Positions / Positionen différées de 3 mois / um 3 Monate verzögert	SPDR Homebuilders XHB	25.5%
	SPDR Biotech XBI	17.3%
	Vanguard World Stock Index VT	17.2%
	SPDR S&P 500 SPY	13.9%
	PowerShares QQQ	4.8%
	iShares US Regionals Banks IAT	2.4%

XMTCH 81.2%

Préservation / Werterhalt	Cash	18.9%
---------------------------	------	-------

Cash 18.8%

Caractéristique / Merkmal

1. Préservation / Werterhalt
2. Outperformance

1. Préservation / Werterhalt
2. Outperformance

Gestion / Management active with a Behavioral approach

active with a Behavioral approach

Univers d'investissement / Anlageuniversum
World with region, country and sector ETF's only
no Derivatives/Options; **no** Investment Vehicles;
no Private Equity **nor any** other Financial product
no commodities

Swiss Performance Index
no Derivatives/Options; **no** Investment Vehicles;
no Private Equity **nor any** other Financial product
no commodities