

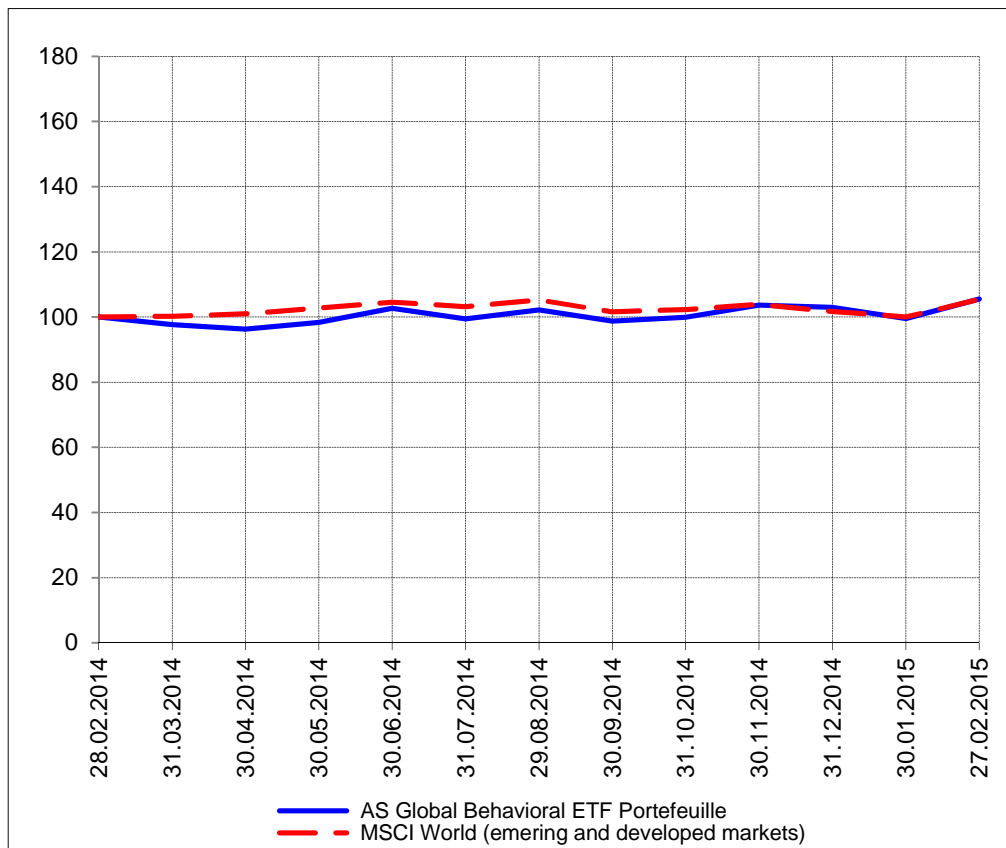
The closing prices (Cours de clôture/Tagesschlusskurse) show results gained after taking into account:  
 > all costs (trading, transactions, regulations, stock exchanges, taxes)  
 > all management fees

Date/Datum	<u>Sentiment-Exposure-Index</u> (approx.)		<u>GLOBAL</u>		<u>SWISS</u>	
	Investi / Investiert	Cash	NAV (USD) CH0034642923 CT1248933 CORP	Benchmark MSCI All Country World Index	NAV (CHF) CH0036308838 CT1248891 CORP	Benchmark Swiss Market Index
27.02.2015			748.86	432.47	2997.81	9014.53
26.02.2015			751.48		3012.04	
25.02.2015			749.67		2985.40	
24.02.2015			750.18		2987.65	
23.02.2015			748.09		2984.44	
20.02.2015			748.09		2947.54	
19.02.2015			743.30		2959.21	
18.02.2015			742.63		2927.47	
17.02.2015			741.70		2910.17	
16.02.2015			pas de cours/geschlossen		2898.77	
13.02.2015			739.98		2876.78	
12.02.2015			736.23		2865.63	
11.02.2015			727.93		2854.48	
10.02.2015			727.08		2871.35	
09.02.2015			717.21		2872.86	
06.02.2015			720.43		2862.23	
05.02.2015			724.83		2843.17	
04.02.2015			718.36		2866.70	
03.02.2015			719.94		2815.13	
02.02.2015			711.89		2815.70	
30.01.2015			706.57	410.33	2802.78	8385.13
31.12.2014			730.70	417.12	2998.24	8983.37

## Portrait du Portefeuille Global / Global Portfolio im Überblick

GLOBAL

Perf. 12 derniers mois, indexée / Perf. der 12 letzten Monate, indexiert

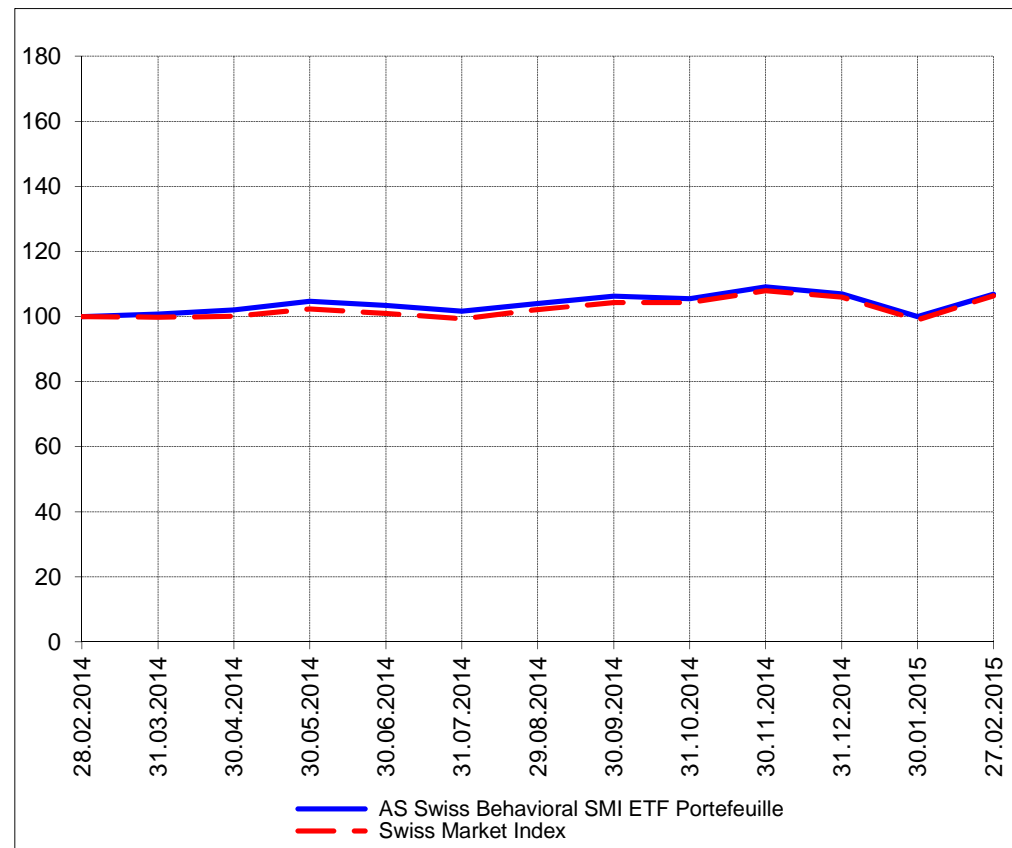


## Portrait du Portefeuille Swiss / Swiss Portfolio im Überblick

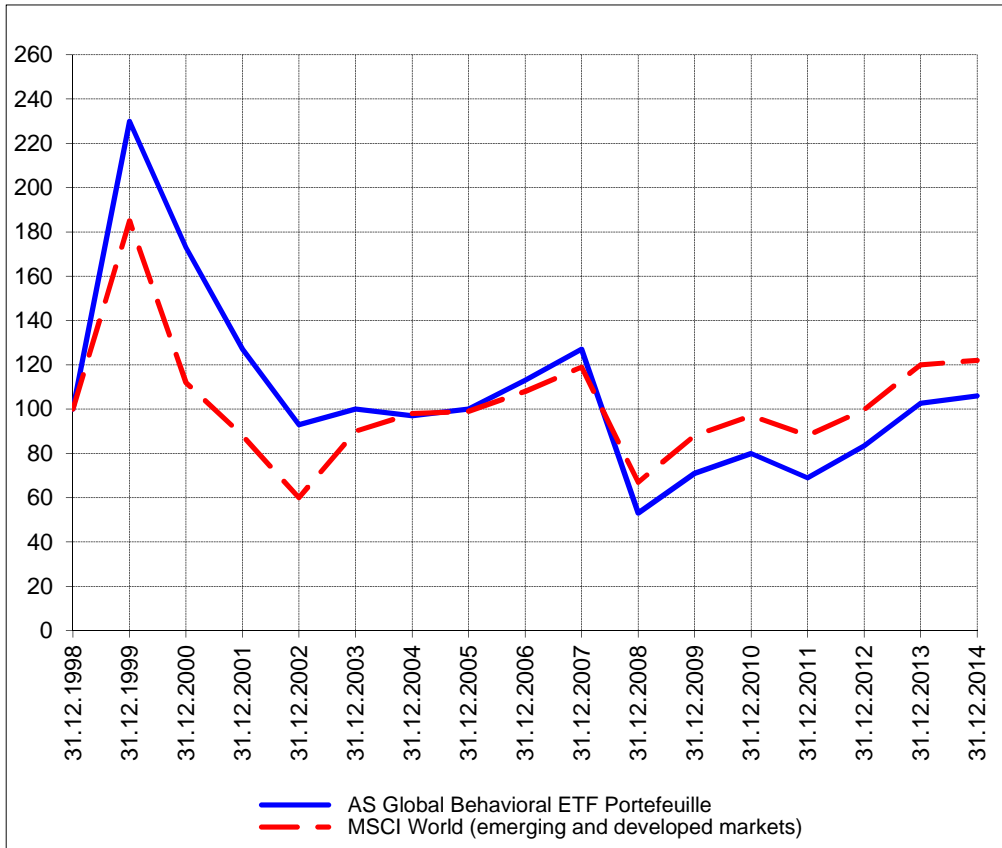
SWISS

**AS**  
Asset Services SA

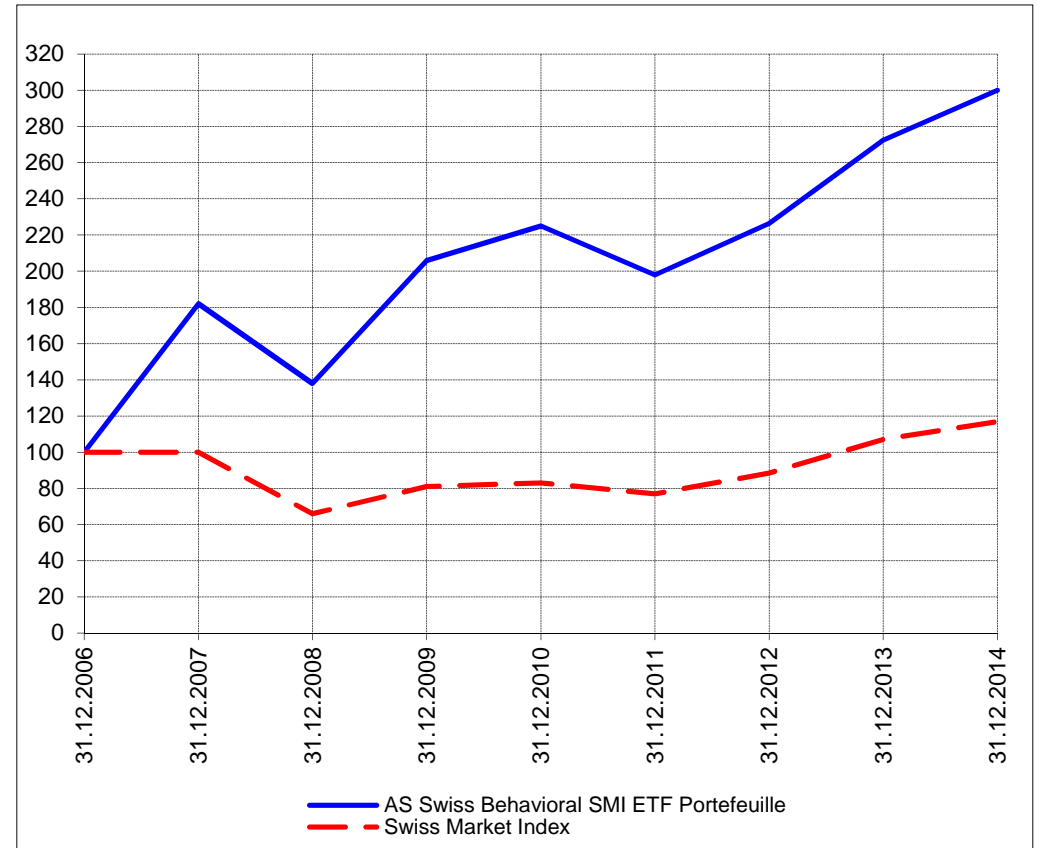
Perf. 12 derniers mois, indexée / Perf. der letzten 12 Monate, indexiert



Perf. depuis création / Perf. seit Lancierung: Global 01. 01. 1999



Perf. depuis création / Perf. seit Lancierung: Swiss 01. 01. 2007



<b>Positions / Positionen</b> différées de 3 mois / um 3 Monate verzögert	PowerShares QQQ	25.3%
	SPDR S&P 500 SPY	23.0%
	Ultra S&P 500 ProShares SSO	17.5%
	iShares Semi Conductor SOXX	15.8%
	SPDR Financial XLF	3.0%

XMTCH 100.0%

Préservation / Werterhalt	Cash	15.4%
---------------------------	------	-------

Cash 0.0%

**Caractéristique / Merkmal**

1. Préservation / Werterhalt
2. Outperformance

1. Préservation / Werterhalt
2. Outperformance

**Gestion / Management** active with a Behavioral approach

active with a Behavioral approach

**Univers d'investissement /  
Anlageuniversum** World with region, country and sector ETF's only  
**no** Derivatives/Options; **no** Investment Vehicles;  
**no** Private Equity **nor any** other Financial product  
**no** commodities

Swiss Performance Index  
**no** Derivatives/Options; **no** Investment Vehicles;  
**no** Private Equity **nor any** other Financial product  
**no** commodities