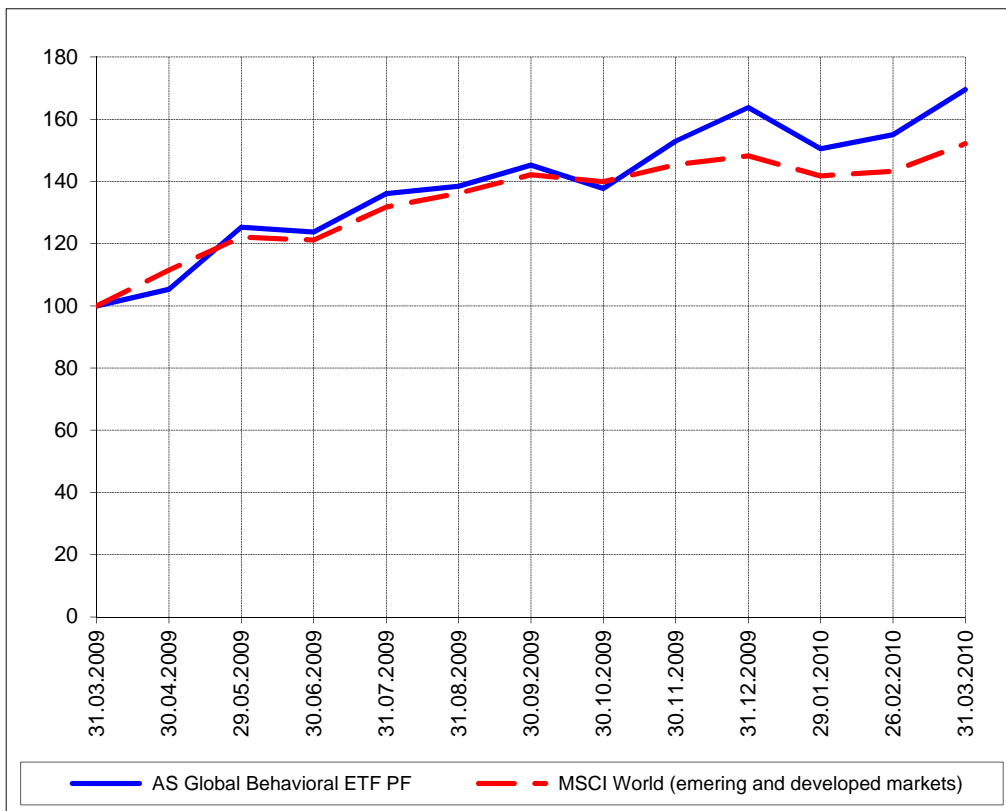


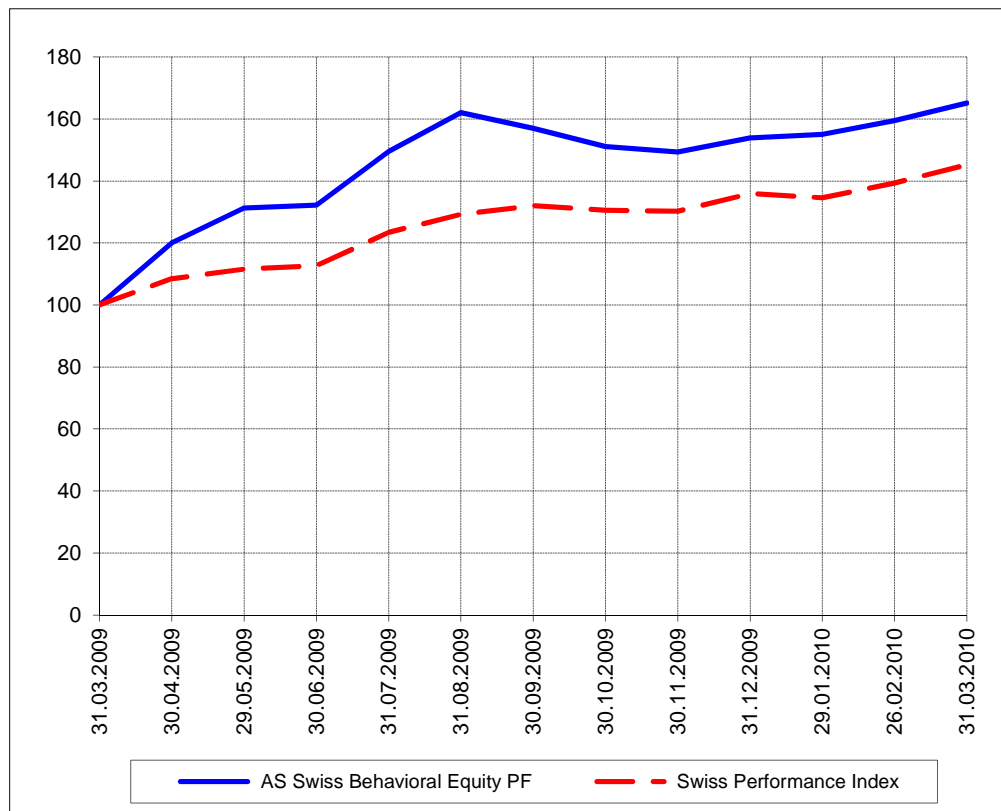
The closing prices (Cours de clôture/Tagesschlusskurse) show results gained after taking into account:
 > all costs (trading, transactions, regulations, stock exchanges, taxes)
 > all management fees

Date/Datum	Global (USD)	Benchmark	Cours de clôture/Tagesschlusskurse		Benchmark
	CH0034642923 CT1248933 CORP	MSCI All Country World Index	Swiss (CHF)		Swiss Performance Index
			CH0036308838 CT1248891 CORP		
31.03.2010	507.46	307.40	2212.59		6007.84
30.03.2010	510.15		2200.88		
29.03.2010	508.45		2219.69		
26.03.2010	503.96		2231.77		
25.03.2010	503.29		2237.19		
24.03.2010	497.63		2229.48		
23.03.2010	508.01		2234.47		
22.03.2010	503.09		2221.46		
19.03.2010	498.44		2241.58		
18.03.2010	504.05		2241.12		
17.03.2010	506.39		2238.91		
16.03.2010	502.54		2232.40		
15.03.2010	496.30		2229.33		
12.03.2010	497.23		2216.88		
11.03.2010	497.15		2212.19		
10.03.2010	495.10		2218.46		
09.03.2010	491.97		2191.31		
08.03.2010	490.48		2189.26		
05.03.2010	488.04		2186.04		
04.03.2010	477.42		2156.43		
03.03.2010	476.80		2145.31		
02.03.2010	475.26		2129.91		
01.03.2010	472.77		2117.80		
26.02.2010	463.96	289.50	2137.01		5763.27
31.12.2009	490.28	299.44	2061.68		5626.40

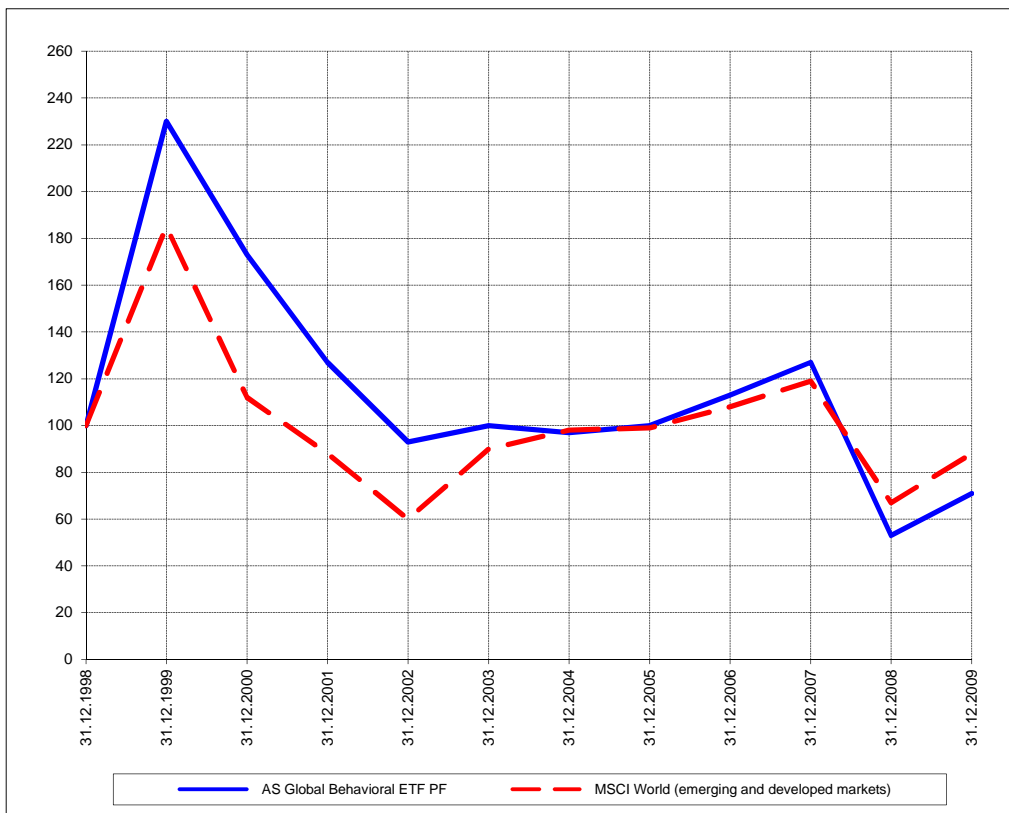
Perf. 12 derniers mois, indexée / Perf. 12 letzten Monaten, indexiert



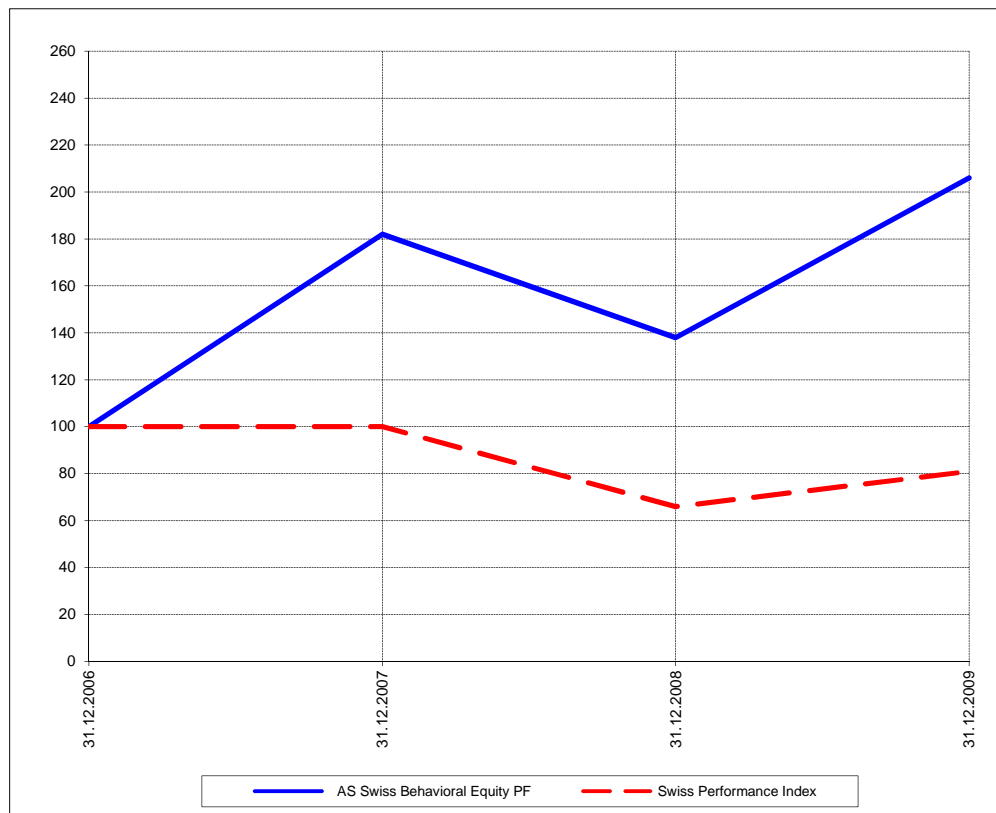
Perf. 12 derniers mois, indexée / Perf. 12 letzten Monaten, indexiert



Perf. depuis création / Perf. seit Lancierung: Global 01. 01. 1999



Perf. depuis création / Perf. seit Lancierung: Swiss 01. 01. 2007



Positions / Positionen
différées de 3 mois /
um 3 Monate verzögert

ProShares NASDAQ Index QLD	37.8 %
iShares MSCI BRIC BKF	25.3 %
Rydex S&P 500 RSU	20.7 %

XMTCH	72.1 %
Swatch	10.9 %
Meyer Burger	9.8 %
Kudelski	4.9 %
VZ	2.9 %

Caractéristique / Merkmal outperformance

outperformance

Gestion / Management active with a Behavioral approach

active with a Behavioral approach

**Univers d'investissement /
Anlageuniversum** World with region, country and sector ETF's only
no Derivatives/Options; **no** Investment Vehicles;
no Private Equity **nor any** other Financial product
no commodities

Swiss Performance Index
no Derivatives/Options; **no** Investment Vehicles;
no Private Equity **nor any** other Financial product
no commodities