

The closing prices (Cours de clôture/Tagesschlusskurse) show results gained after taking into account:
 > all costs (trading, transactions, regulations, stock exchanges, taxes)
 > all management fees

Date/Datum	Cours de clôture/Tagesschlusskurse			
	Global (USD) CH0034642923 CT1248933 CORP	Benchmark MSCI All Country World Index	Swiss (CHF) CH0036308838 CT1248891 CORP	Benchmark Swiss Performance Index
31.03.2011	572.67	343.64	2428.44	5791.55
30.03.2011	572.26		2423.47	
29.03.2011	568.10		2407.41	
28.03.2011	561.91		2404.57	
25.03.2011	564.52		2382.58	
24.03.2011	562.46		2364.65	
23.03.2011	554.60		2336.64	
22.03.2011	551.99		2333.74	
21.03.2011	553.15		2311.61	
18.03.2011	543.27		2237.70	
17.03.2011	543.28		2192.14	
16.03.2011	536.63		2181.22	
15.03.2011	548.67		2179.40	
14.03.2011	557.58		2286.09	
11.03.2011	560.38		2310.44	
10.03.2011	555.64		2354.94	
09.03.2011	569.37		2382.79	
08.03.2011	572.35		2378.68	
07.03.2011	567.95		2357.90	
04.03.2011	575.52		2350.57	
03.03.2011	580.49		2336.50	
02.03.2011	567.48		2330.61	
01.03.2011	565.64		2369.39	
28.02.2011	578.84	344.82	2333.83	5952.30
31.12.2010	550.55	330.64	2250.31	5790.62

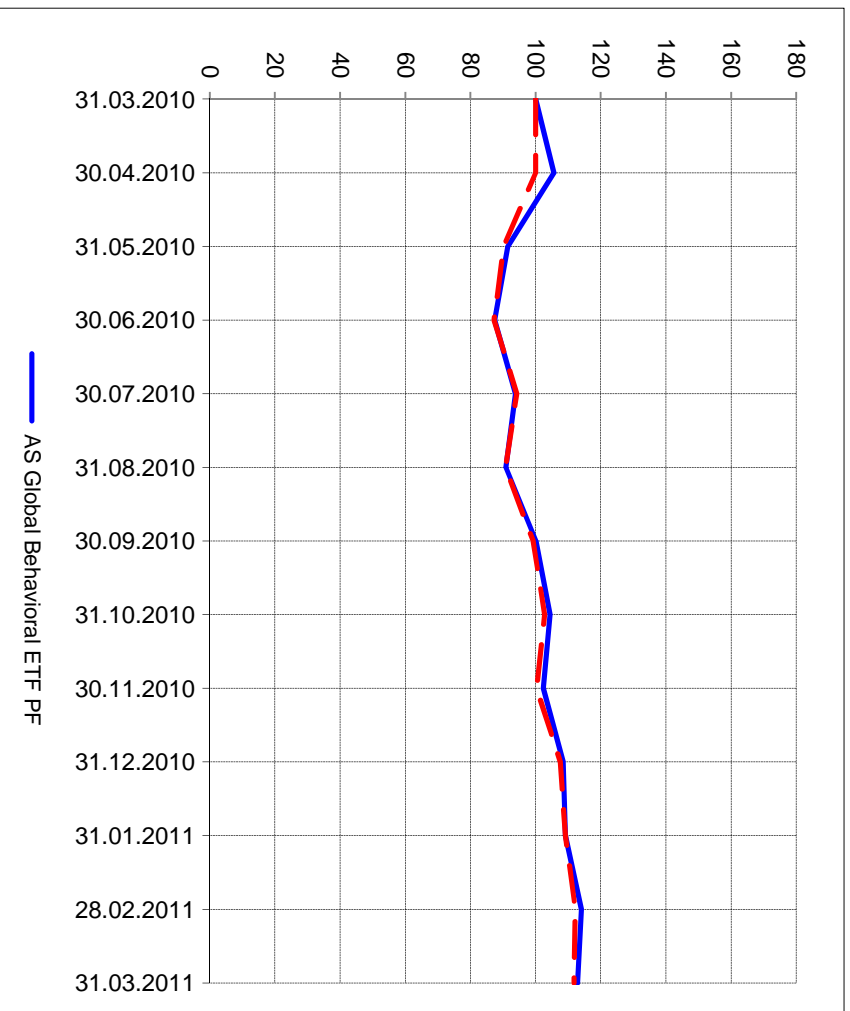
Portrait du Portefeuille Global / Global Portfolio im Überblick



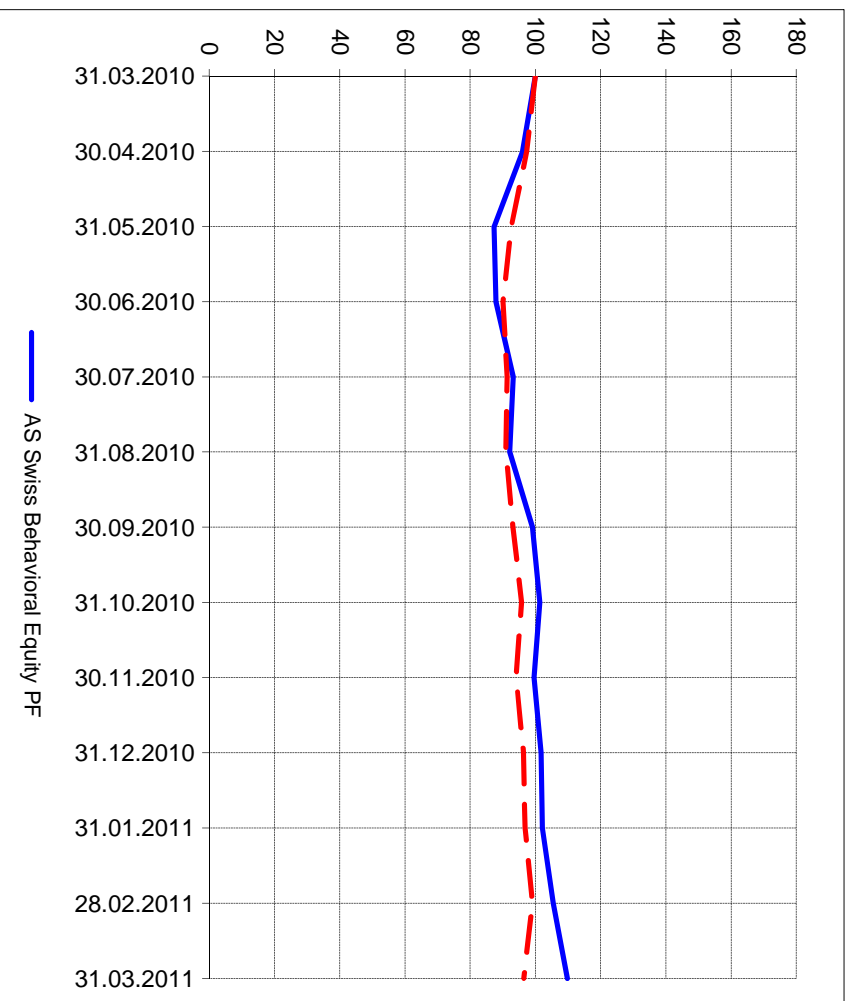
Portrait du Portefeuille Swiss / Swiss Portfolio im Überblick



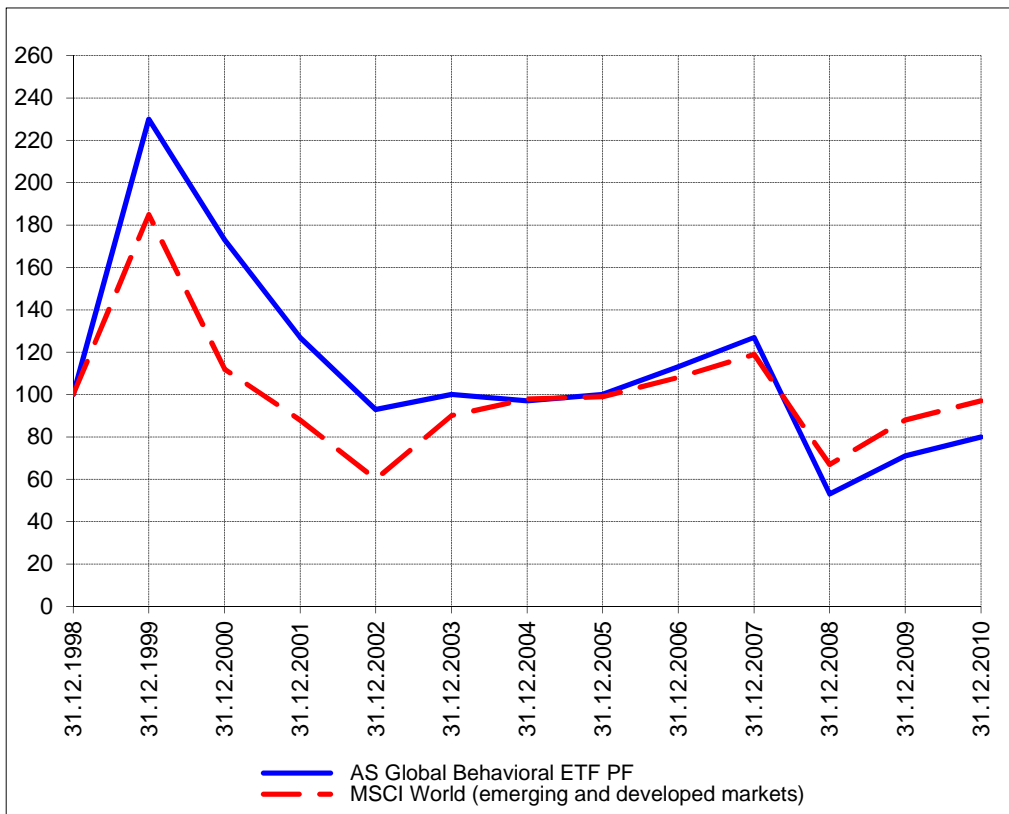
Perf. 12 derniers mois, indexée / Perf. 12 letzten Monaten, indexiert



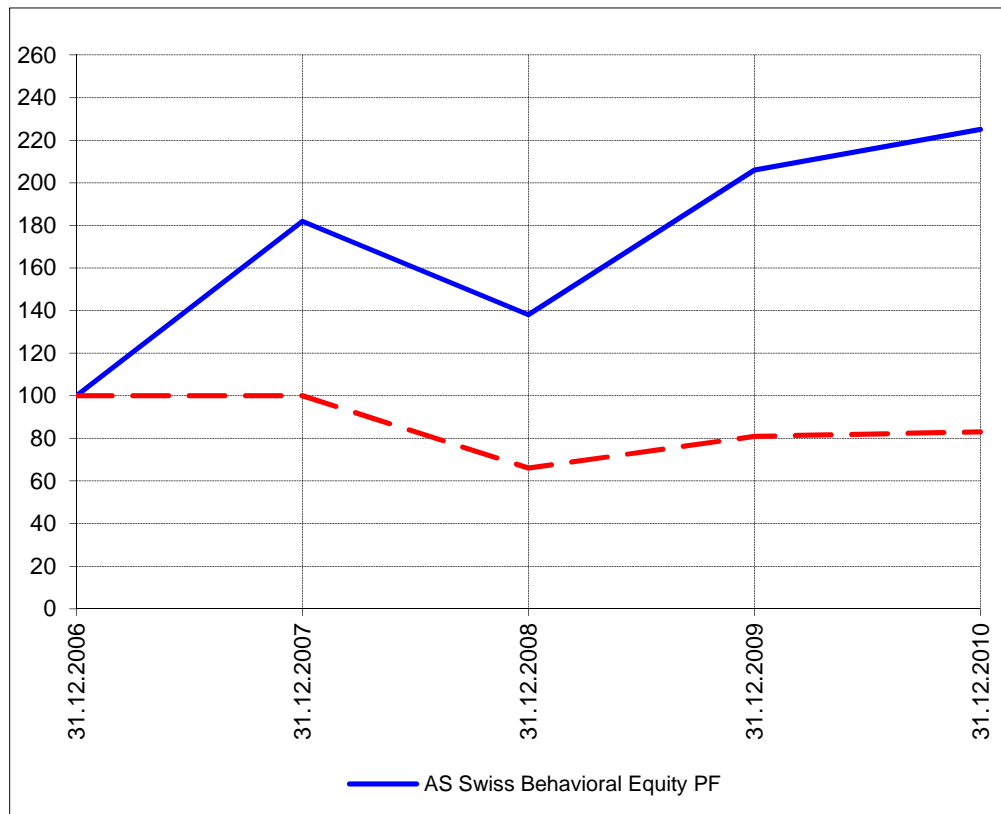
Perf. 12 derniers mois, indexée / Perf. 12 letzten Monaten, indexiert



Perf. depuis création / Perf. seit Lancierung: Global 01. 01. 1999



Perf. depuis création / Perf. seit Lancierung: Swiss 01. 01. 2007



Positions / Positionen
 différées de 3 mois /
 um 3 Monate verzögert

ProShares NASDAQ Index QLD	28.4%
Rydex S&P 500 RSU	28.8%

XMTCH	80.6%
Walter Meyer	3.0%
Schindler	2.9%
VZ	2.8%
Partnersgroup	2.6%
Richemont	2.8%
Swatch	2.7%
Zehnder	2.7%

Caractéristique / Merkmal outperformance

outperformance

Gestion / Management active with a Behavioral approach

active with a Behavioral approach

**Univers d'investissement /
 Anlageuniversum** World with region, country and sector ETF's only
no Derivatives/Options; **no** Investment Vehicles;
no Private Equity **nor any** other Financial product
no commodities

Swiss Performance Index
no Derivatives/Options; **no** Investment Vehicles;
no Private Equity **nor any** other Financial product
no commodities