







The closing prices (Cours de clôture/Tagesschlusskurse) show results gained after taking into account:
 > all costs (trading, transactions, regulations, stock exchanges, taxes)
 > all management fees

Date/Datum	<u>Sentiment-Exposure-Index</u> (approx.)		<u>GLOBAL</u>		<u>SWISS</u>	
	Investi / Investiert	Cash	NAV (USD) CH0034642923 CT1248933 CORP	Benchmark MSCI All Country World Index	NAV (CHF) CH0036308838 CT1248891 CORP	Benchmark Swiss Market Index
30.03.2012			559.34	333.30	2079.51	6235.51
29.03.2012			561.10		2059.70	
28.03.2012			563.20		2083.25	
27.03.2012			563.47		2088.19	
26.03.2012			562.80		2092.93	
23.03.2012			553.89		2081.03	
22.03.2012			554.04		2083.29	
21.03.2012			556.88		2098.50	
20.03.2012			554.86		2097.71	
19.03.2012			557.46		2114.35	
16.03.2012			554.24		2112.13	
15.03.2012			555.87		2110.75	
14.03.2012			551.05		2103.32	
13.03.2012			551.54		2088.05	
12.03.2012			540.92		2055.09	
09.03.2012			540.70		2059.08	
08.03.2012			536.75		2043.89	
07.03.2012			529.28		2032.10	
06.03.2012			523.95		2011.95	
05.03.2012			532.78		2043.58	
02.03.2012			536.10		2044.56	
01.03.2012			538.93		2034.74	
29.02.2012			535.97	331.93	2018.39	6110.02
30.12.2011			477.20	299.51	1979.61	5936.23

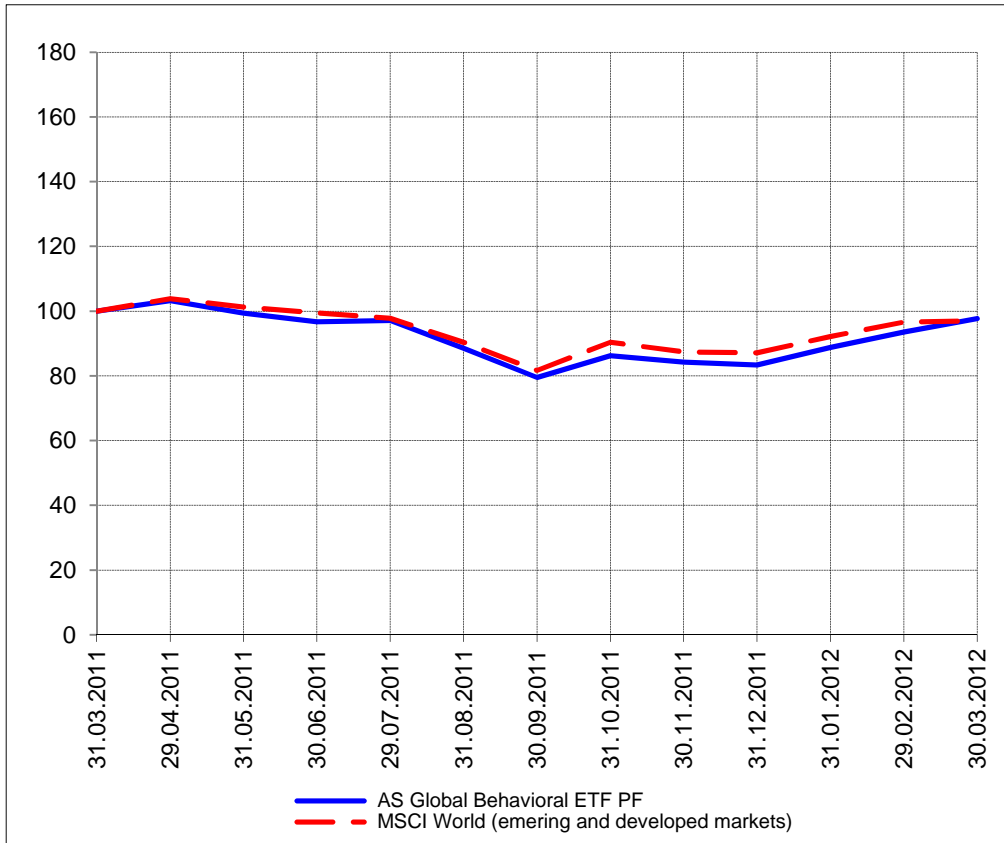
Portrait du Portefeuille Global / Global Portfolio im Überblick

Portrait du Portefeuille Swiss / Swiss Portfolio im Überblick

GLOBAL



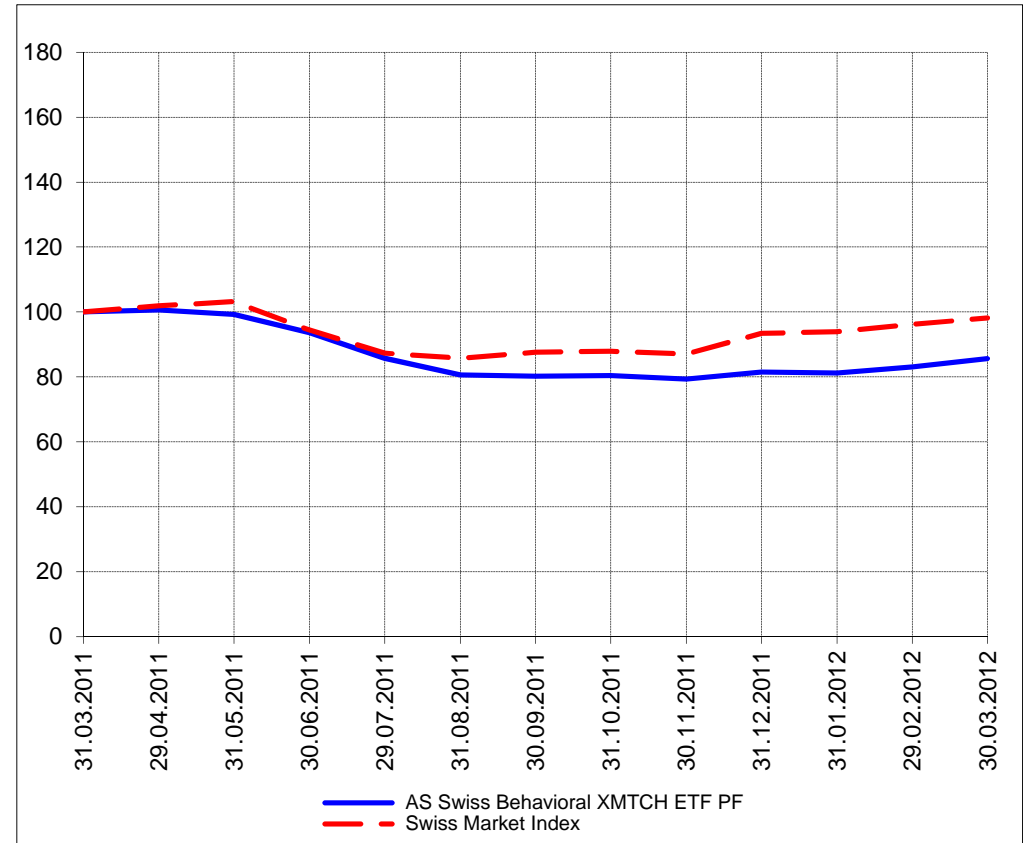
Perf. 12 derniers mois, indexée / Perf. der 12 letzten Monate, indexiert



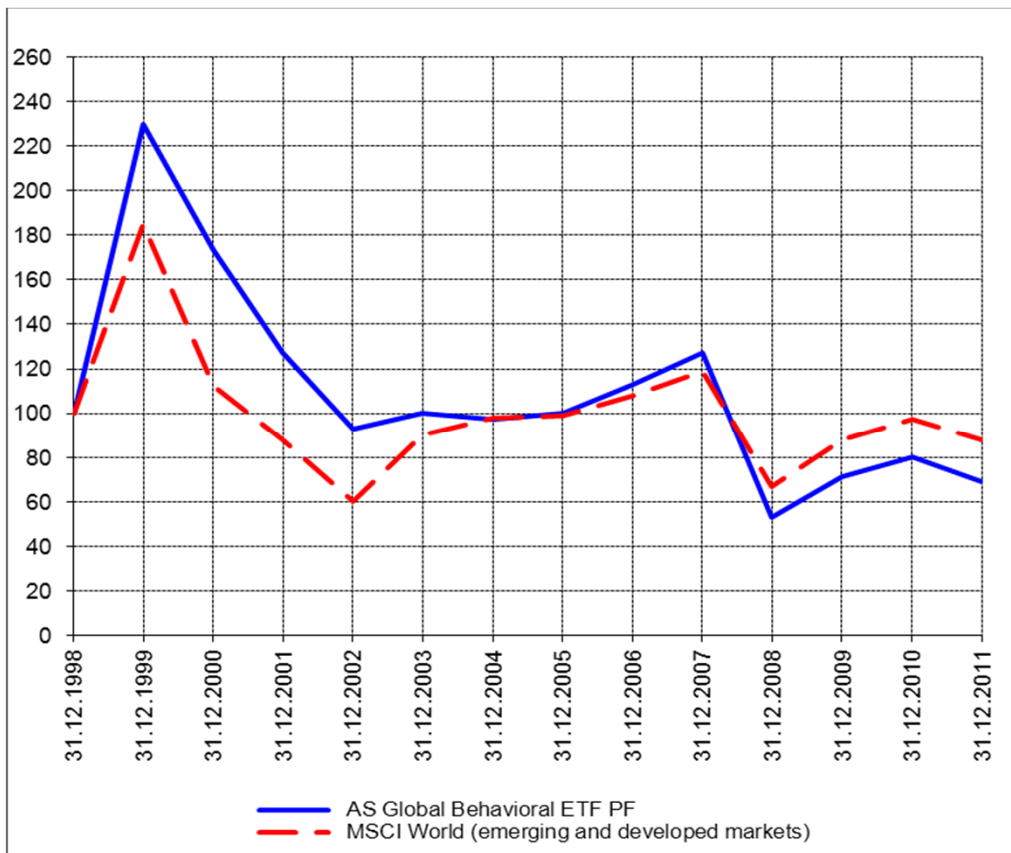
SWISS



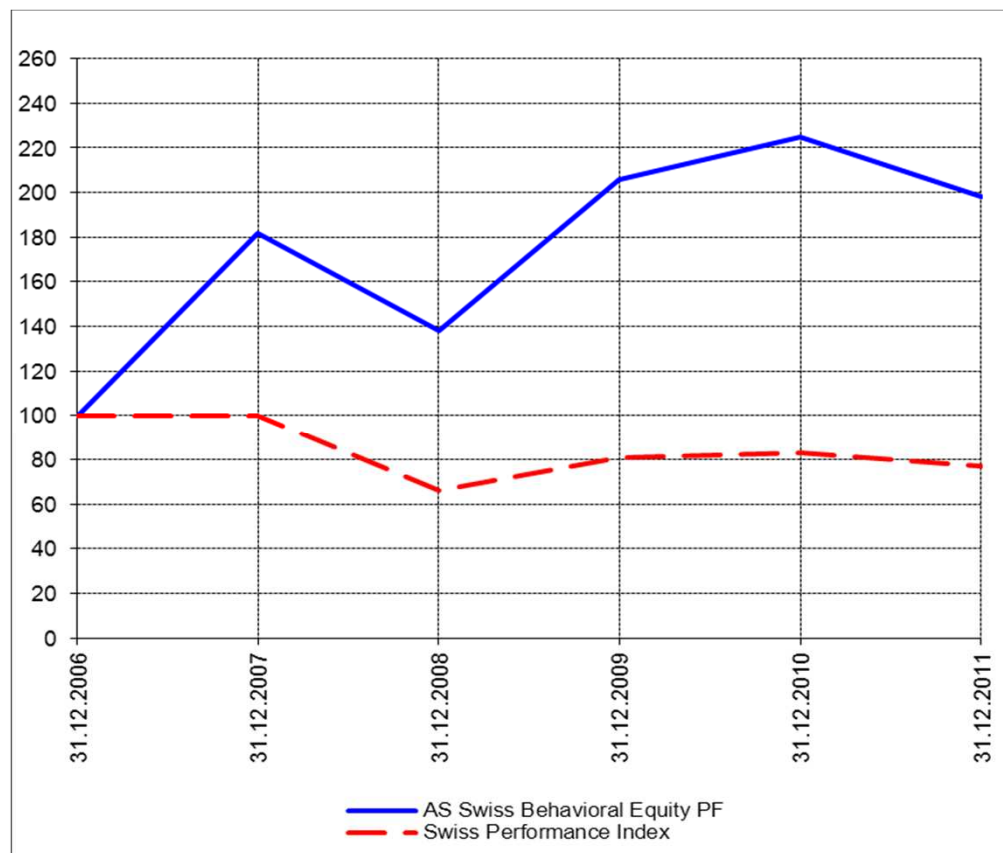
Perf. 12 derniers mois, indexée / Perf. der letzten 12 Monate, indexiert



Perf. depuis création / Perf. seit Lancierung: Global 01. 01. 1999



Perf. depuis création / Perf. seit Lancierung: Swiss 01. 01. 2007



Positions / Positionen différées de 3 mois / um 3 Monate verzögert	ProShares NASDAQ Index QLD	20.3%
	SPDR Energy XLE	19.1%
	SPDR S&P 500 SPY	13.0%
	PowerShares QQQ	6.6%
	SPDR Homebuilders XHB	6.9%
	iShares Oil Equipment & Services	6.6%

XMTCH	59.0%
Synthes	10.6%
Schindler	10.1%
Swiss RE	10.1%

Caractéristique / Merkmal	1. Préservation / Werterhalt 2. Outperformance
----------------------------------	---

1. Préservation / Werterhalt 2. Outperformance

Gestion / Management	active with a Behavioral approach
-----------------------------	-----------------------------------

active with a Behavioral approach

Univers d'investissement / Anlageuniversum	World with region, country and sector ETF's only no Derivatives/Options; no Investment Vehicles; no Private Equity nor any other Financial product no commodities
---	---

Swiss Performance Index no Derivatives/Options; no Investment Vehicles; no Private Equity nor any other Financial product no commodities
--