

The closing prices (Cours de clôture/Tagesschlusskurse) show results gained after taking into account:
 > all costs (trading, transactions, regulations, stock exchanges, taxes)
 > all management fees

AS

Asset Services SA

Date/Datum	<u>Sentiment-Exposure-Index</u> (approx.)		<u>GLOBAL</u>		<u>SWISS</u>	
	Investi / Investiert	Cash	NAV (USD) CH0034642923 CT1248933 CORP	Benchmark MSCI All Country World Index	NAV (CHF) CH0036308838 CT1248891 CORP	Benchmark Swiss Market Index
29.03.2013			pas de cours/g	360.06	pas de cours/geschlossen	
28.03.2013			627.62		2574.65	7813.67
27.03.2013			625.78		2567.45	
26.03.2013			623.58		2573.89	
25.03.2013			620.06		2564.39	
22.03.2013			622.37		2557.95	
21.03.2013			619.08		2562.55	
20.03.2013			625.61		2590.73	
19.03.2013			618.78		2573.16	
18.03.2013			622.05		2587.85	
15.03.2013			625.24		2599.67	
14.03.2013			626.21		2585.30	
13.03.2013			621.50		2564.53	
12.03.2013			622.63		2576.51	
11.03.2013			625.14		2559.38	
08.03.2013			623.05		2554.53	
07.03.2012			618.59		2542.60	
06.03.2012			616.91		2541.65	
05.03.2013			614.19		2552.48	
04.03.2013			608.09		2506.90	
01.03.2013			603.03		2511.36	
28.02.2013			599.98	354.43	2509.45	7593.67
31.12.2012			576.59	339.75	2264.73	6822.44

Portrait du Portefeuille Global / Global Portfolio im Überblick

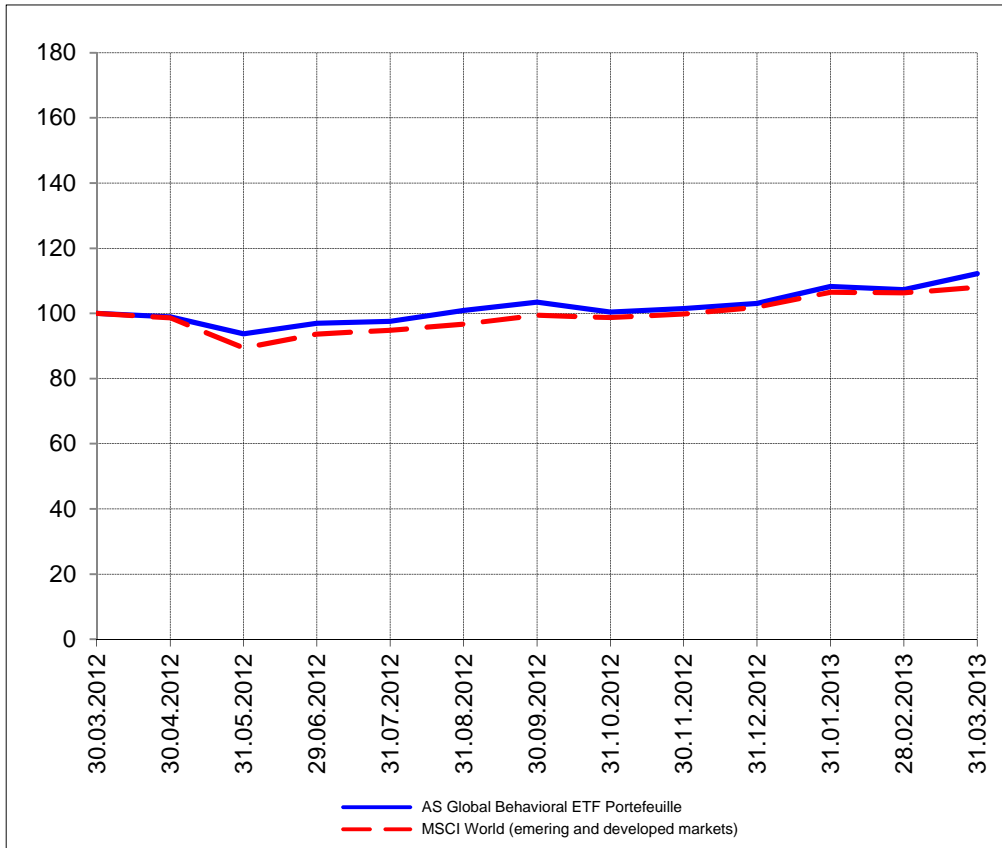
Portrait du Portefeuille Swiss / Swiss Portfolio im Überblick



GLOBAL



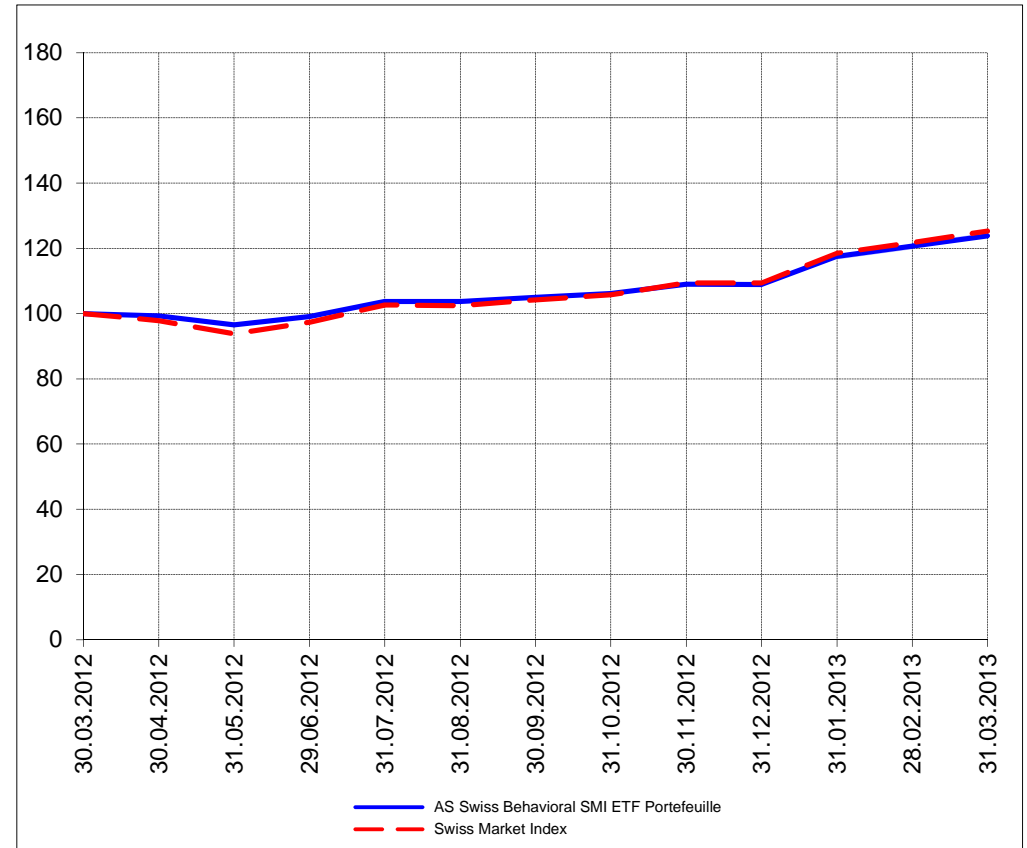
Perf. 12 derniers mois, indexée / Perf. der 12 letzten Monate, indexiert



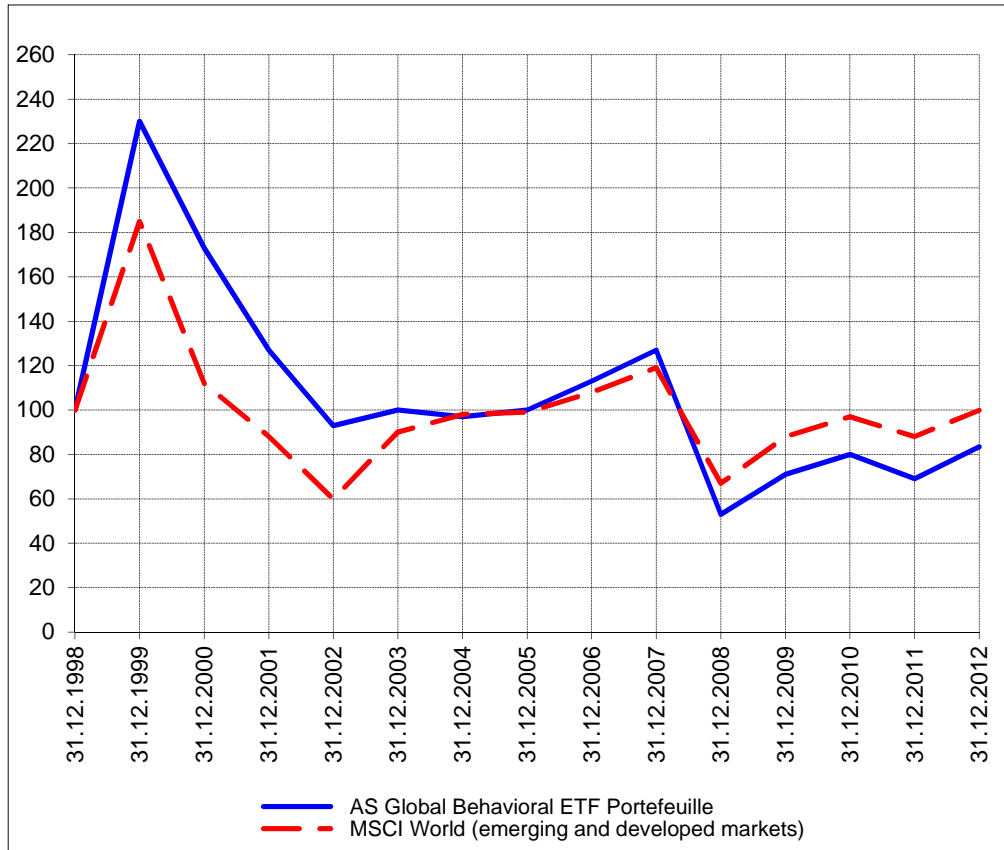
SWISS



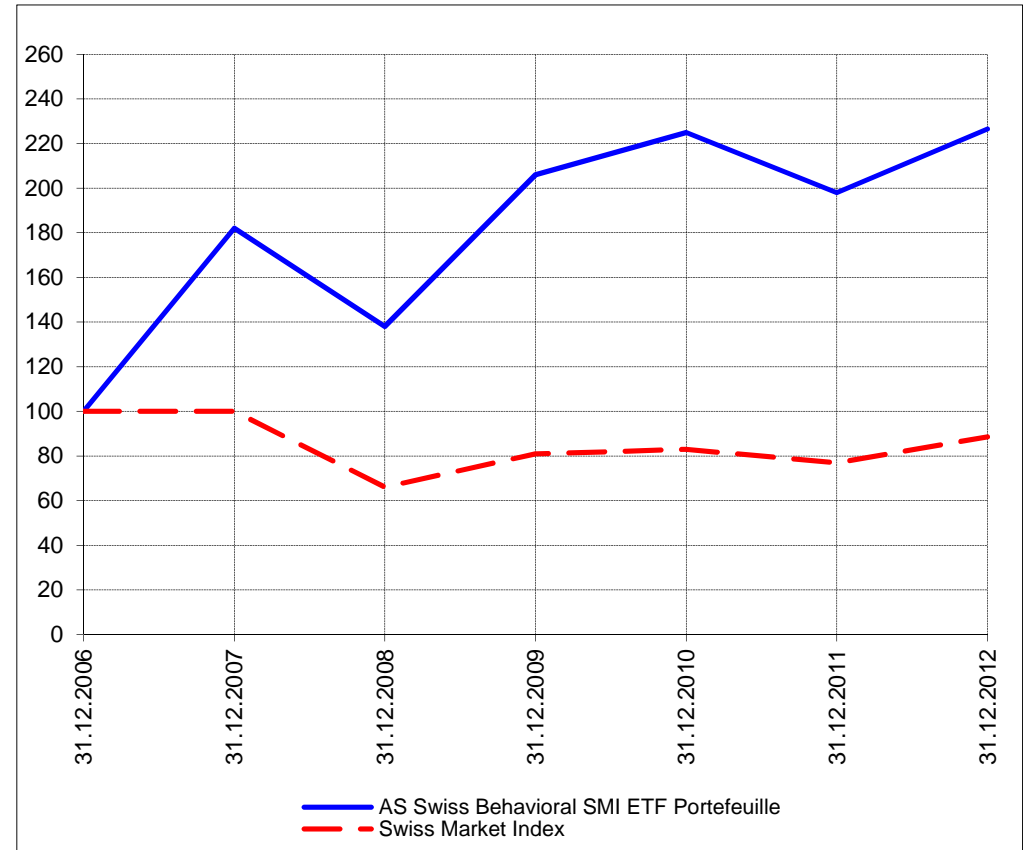
Perf. 12 derniers mois, indexée / Perf. der letzten 12 Monate, indexiert



Perf. depuis création / Perf. seit Lancierung: Global 01. 01. 1999



Perf. depuis création / Perf. seit Lancierung: Swiss 01. 01. 2007



Positions / Positionen différées de 3 mois / um 3 Monate verzögert	SPDR Homebuilders XHB	25.2%
	Vanguard World Stock Index VT	17.4%
	SPDR Biotech XBI	16.9%
	iShares MSCI Turkey TUR	15.8%
	SPDR S&P 500 SPY	10.7%
	PowerShares QQQ	4.7%

XMTCH 90.1%

Préservation / Werterhalt	Cash	9.3%
---------------------------	------	------

Cash 9.9%

Caractéristique / Merkmal
1. Préservation / Werterhalt
2. Outperformance

1. Préservation / Werterhalt
2. Outperformance

Gestion / Management active with a Behavioral approach

active with a Behavioral approach

**Univers d'investissement /
Anlageuniversum**
World with region, country and sector ETF's only
no Derivatives/Options; **no** Investment Vehicles;
no Private Equity **nor any** other Financial product
no commodities

Swiss Performance Index
no Derivatives/Options; **no** Investment Vehicles;
no Private Equity **nor any** other Financial product
no commodities