

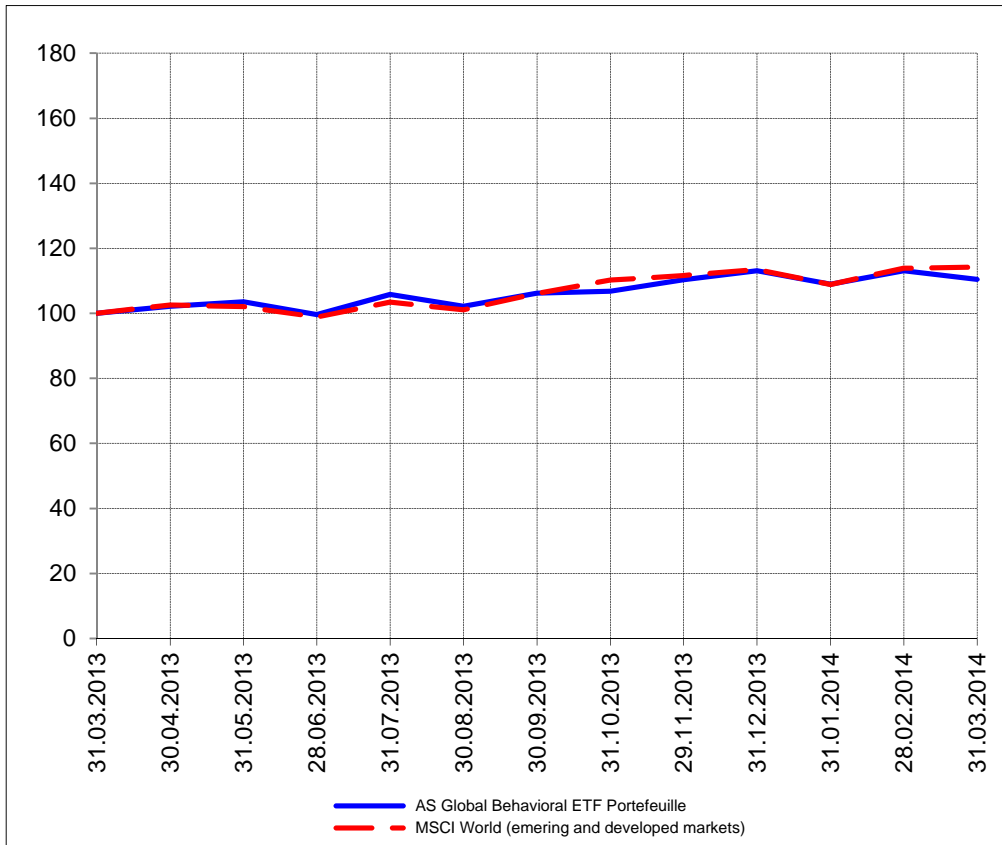
The closing prices (Cours de clôture/Tagesschlusskurse) show results gained after taking into account:
 > all costs (trading, transactions, regulations, stock exchanges, taxes)
 > all management fees

Date/Datum	<u>Sentiment-Exposure-Index</u> (approx.)		<u>GLOBAL</u>		<u>SWISS</u>	
	Investi / Investiert	Cash	NAV (USD) CH0034642923 CT1248933 CORP	Benchmark MSCI All Country World Index	NAV (CHF) CH0036308838 CT1248891 CORP	Benchmark Swiss Market Index
31.03.2014			693.09	411.02	2825.81	8453.82
28.03.2014			685.50		2800.71	
27.03.2014			684.84		2785.22	
26.03.2014			686.10		2792.04	
25.03.2014			695.72		2778.87	
24.03.2014			694.88		2750.52	
21.03.2014			701.84		2781.04	
20.03.2014			712.01		2756.61	
19.03.2014			710.41		2757.69	
18.03.2014			712.85		2761.17	
17.03.2014			702.81		2734.90	
14.03.2014			695.61		2722.25	
13.03.2014			698.15		2752.31	
12.03.2014			710.00		2783.64	
11.03.2014			708.69		2802.11	
10.03.2014			714.64		2796.63	
07.03.2014			716.53		2790.84	
06.03.2014			717.69		2824.00	
05.03.2014			716.89		2815.31	
04.03.2014			716.34		2814.02	
03.03.2014			704.89		2754.78	
28.02.2014			709.94	410.13	2804.68	8475.33
31.12.2013			709.76	408.55	2724.70	8202.98

Portrait du Portefeuille Global / Global Portfolio im Überblick

GLOBAL

Perf. 12 derniers mois, indexée / Perf. der 12 letzten Monate, indexiert

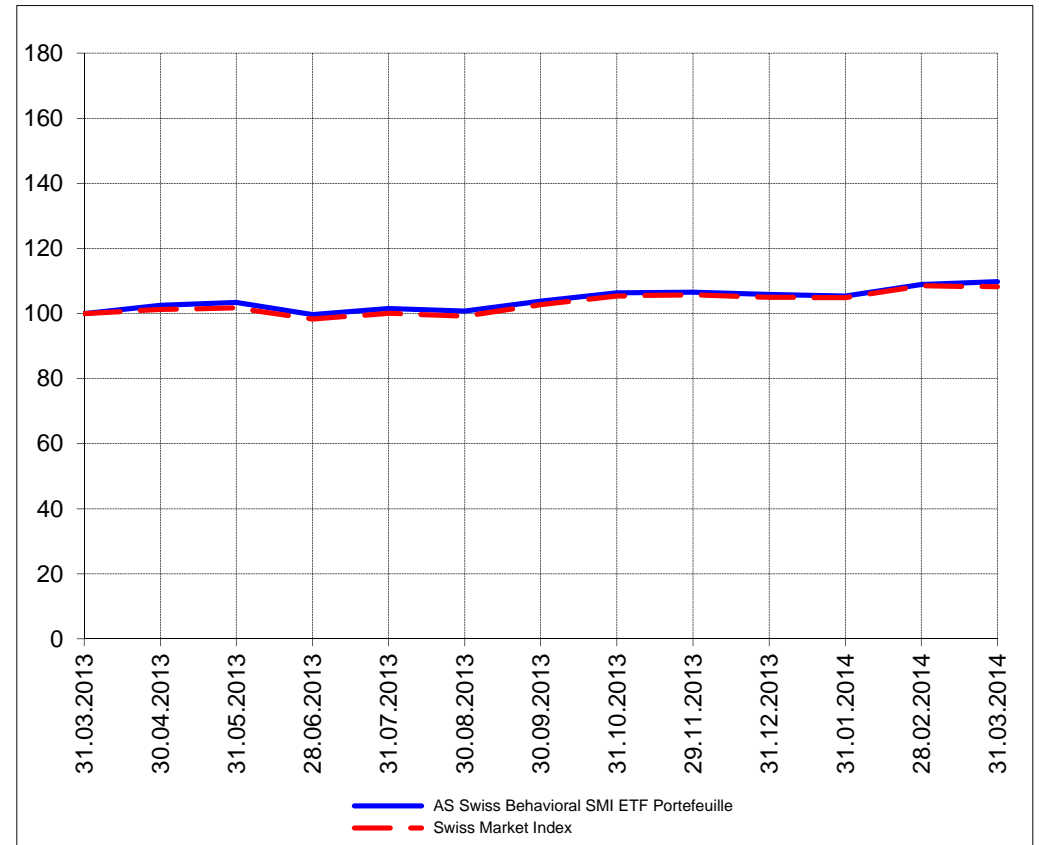


Portrait du Portefeuille Swiss / Swiss Portfolio im Überblick

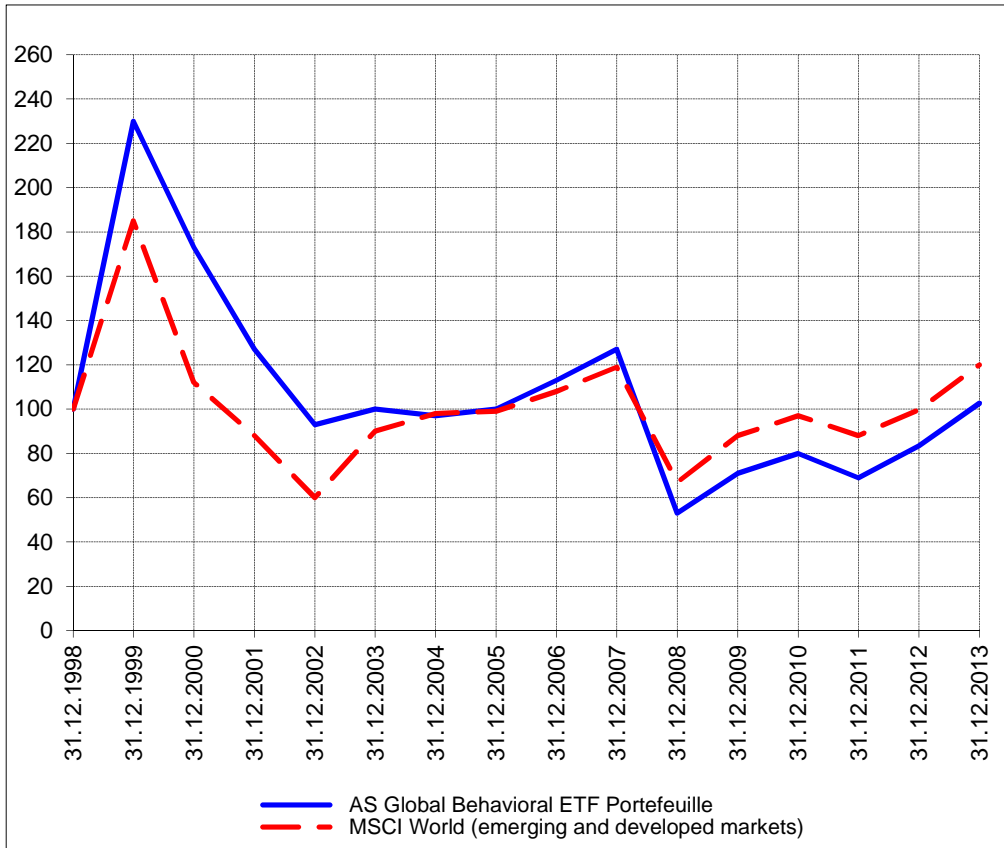
SWISS

AS
Asset Services SA

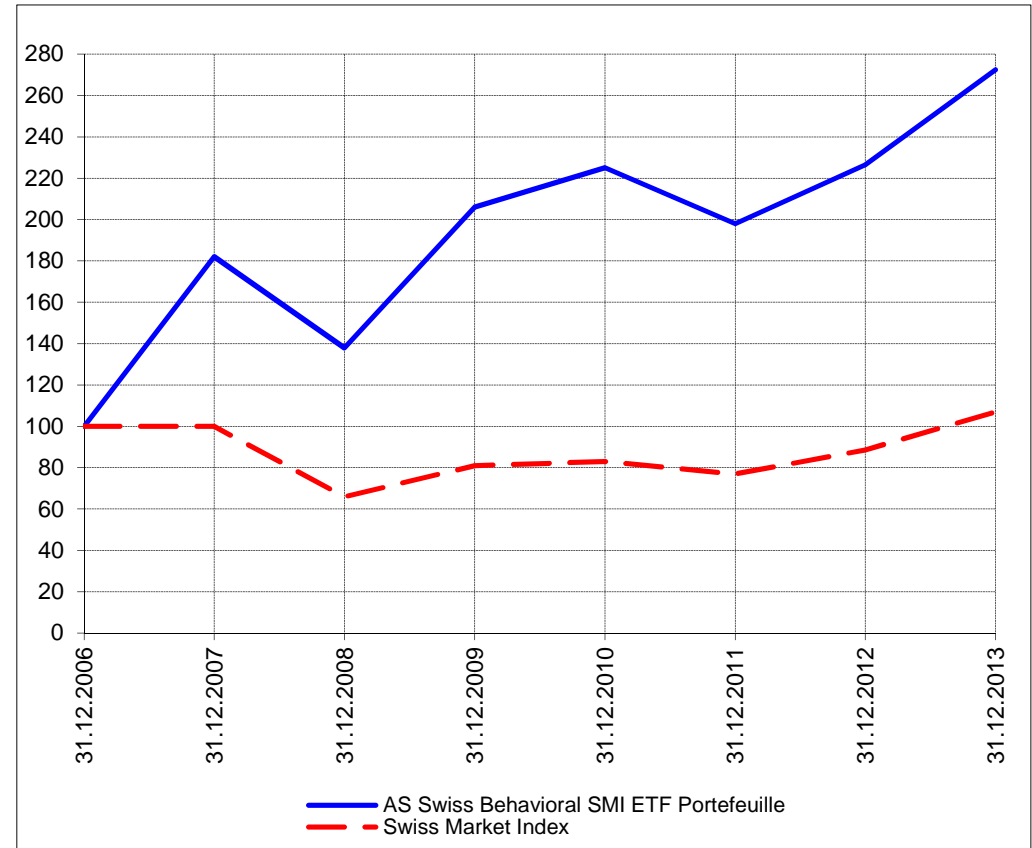
Perf. 12 derniers mois, indexée / Perf. der letzten 12 Monate, indexiert



Perf. depuis création / Perf. seit Lancierung: Global 01. 01. 1999



Perf. depuis création / Perf. seit Lancierung: Swiss 01. 01. 2007



Positions / Positionen différées de 3 mois / um 3 Monate verzögert	Ultra S&P 500 ProShares SSO	17.7%
	ProShares Ultra QLD	10.6%
	Direxion Financial FAS	7.5%
	Direxion Energy ERX	6.1%
	Vanguard World Stock Index VT	5.9%

XMTCH 100.0%

Préservation / Werterhalt	Cash	52.2%
---------------------------	------	-------

Cash 0.0%

Caractéristique / Merkmal
1. Préservation / Werterhalt
2. Outperformance

1. Préservation / Werterhalt
2. Outperformance

Gestion / Management active with a Behavioral approach

active with a Behavioral approach

**Univers d'investissement /
Anlageuniversum**
World with region, country and sector ETF's only
no Derivatives/Options; **no** Investment Vehicles;
no Private Equity **nor any** other Financial product
no commodities

Swiss Performance Index
no Derivatives/Options; **no** Investment Vehicles;
no Private Equity **nor any** other Financial product
no commodities