

The closing prices (Cours de clôture/Tagesschlusskurse) show results gained after taking into account:
 > all costs (trading, transactions, regulations, stock exchanges, taxes)
 > all management fees

Date/Datum	Global (USD)	Benchmark	Cours de clôture/Tagesschlusskurse		Benchmark
	CH0034642923 CT1248933 CORP	MSCI All Country World Index	Swiss (CHF)		Swiss Performance Index
			CH0036308838 CT1248891 CORP		
30.04.2010	535.89	307.35	2125.59		5847.37
29.04.2010	551.38		2125.31		
28.04.2010	536.40		2097.19		
27.04.2010	531.80		2140.45		
26.04.2010	557.42		2179.68		
23.04.2010	557.42		2181.92		
22.04.2010	549.98		2217.59		
21.04.2010	542.47		2236.42		
20.04.2010	538.27		2240.55		
19.04.2010	530.16		2236.72		
16.04.2010	529.08		2239.19		
15.04.2010	541.66		2259.14		
14.04.2010	542.34		2263.96		
13.04.2010	531.96		2247.27		
12.04.2010	528.06		2250.12		
09.04.2010	527.52		2260.67		
08.04.2010	521.85		2234.93		
07.04.2010	518.90		2277.65		
06.04.2010	523.10		2268.69		
05.04.2010	522.00		pas de cours/geschlossen		
02.04.2010	pas de cours/geschlossen		pas de cours/geschlossen		
01.04.2010	512.61		2237.70		
31.03.2010	507.46	307.40	2212.59		6007.84
31.12.2009	490.28	299.44	2061.68		5626.40

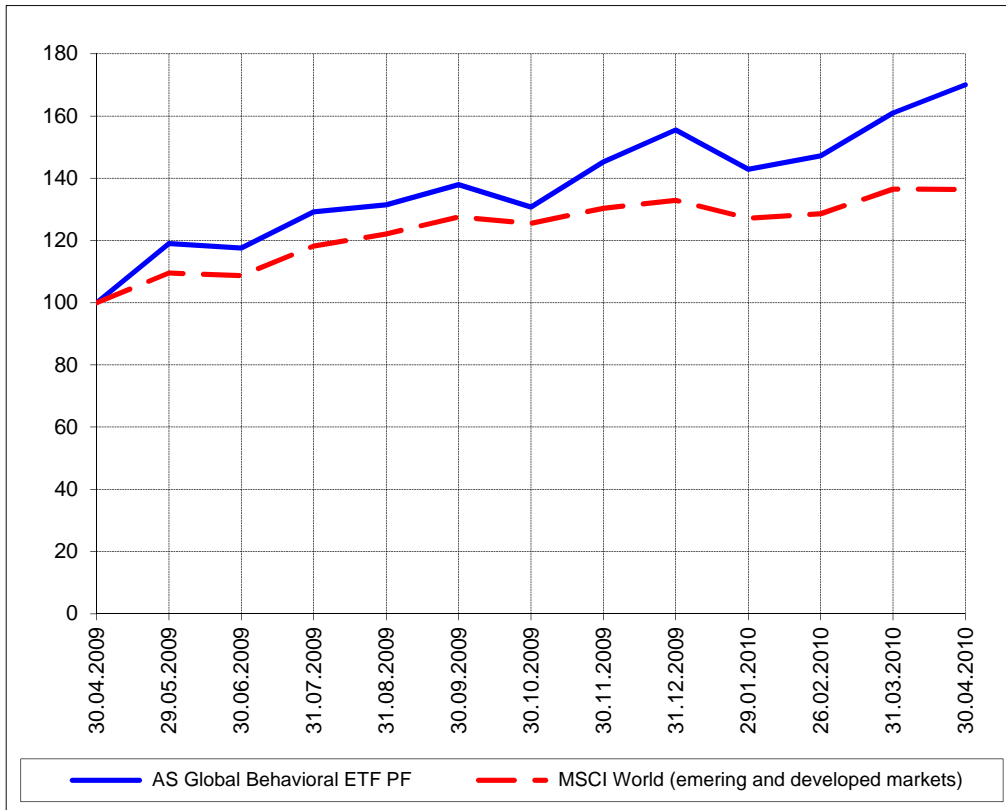
Portrait du Portefeuille Global / Global Portfolio im Überblick



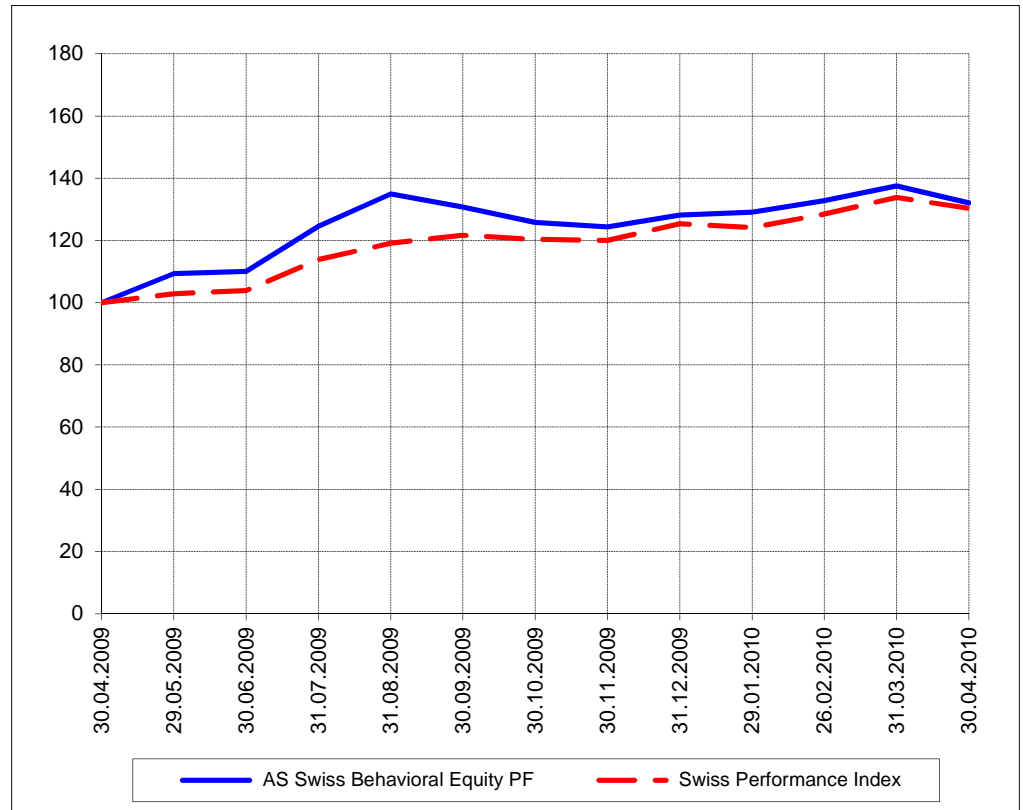
Portrait du Portefeuille Swiss / Swiss Portfolio im Überblick



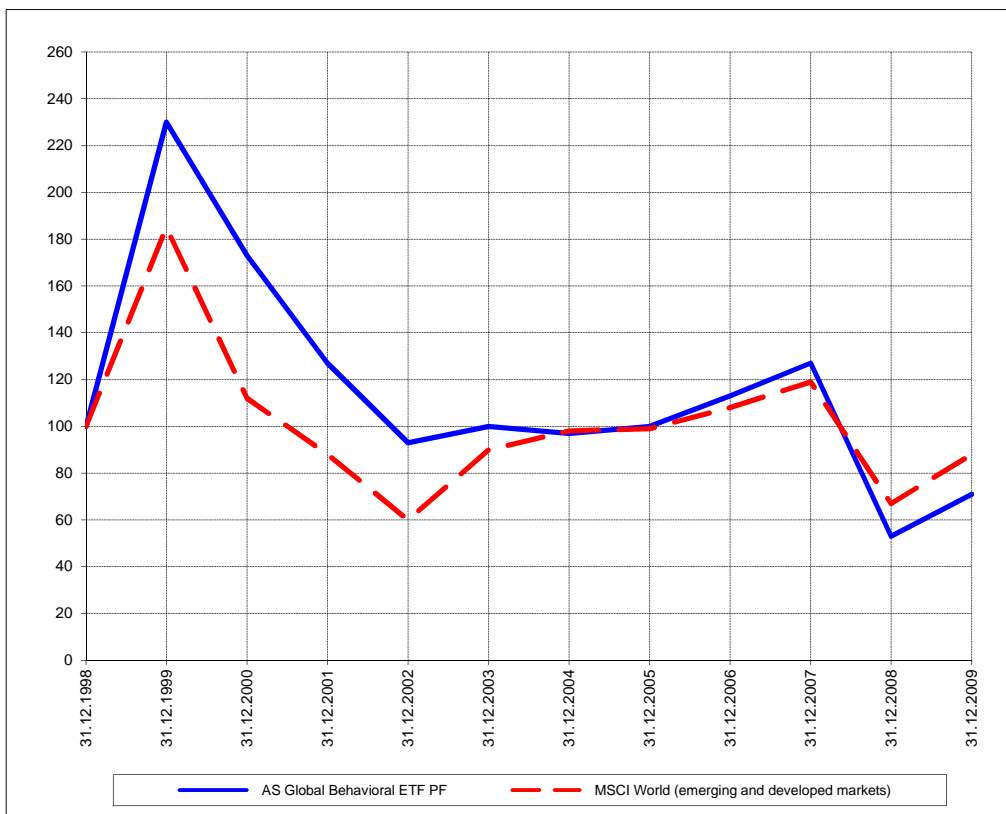
Perf. 12 derniers mois, indexée / Perf. 12 letzten Monaten, indexiert



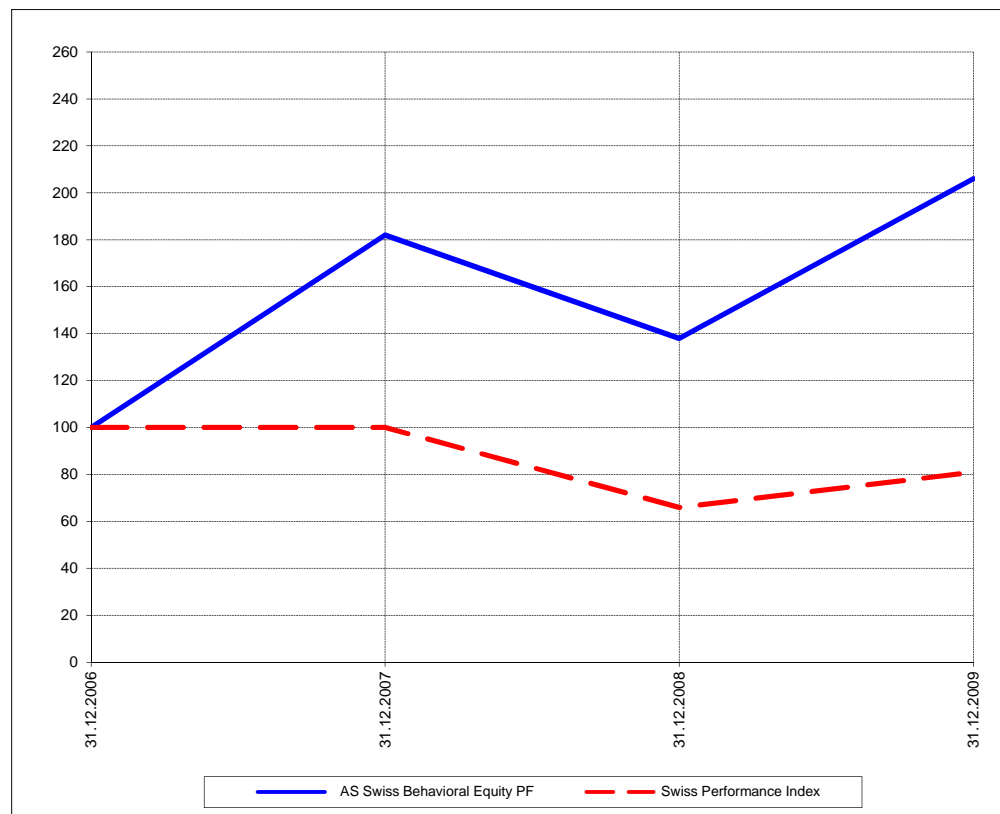
Perf. 12 derniers mois, indexée / Perf. 12 letzten Monaten, indexiert



Perf. depuis création / Perf. seit Lancierung: Global 01. 01. 1999



Perf. depuis création / Perf. seit Lancierung: Swiss 01. 01. 2007



Positions / Positionen différées de 3 mois / um 3 Monate verzögert	Rydex S&P 500 RSU	25.7%
	ProShares NASDAQ Index QLD	24.2%
	iShares MSCI Turkey TUR	8.2%
	SPDR S&P Homebuilders XHB	2.8%
	iShares Oil Equipment IEZ	2.7%

XMTCH	38.4%
Swatch	11.9%
Kudelski	10.9%
Meyer Burger	9.9%
Ublox	6.2%
Walter Meyer	5.8%
VZ	5.7%
Uster Technology	5.1%
Forbo	5.1%
Daetwiler	2.4%
Adecco	2.4%

Caractéristique / Merkmal outperformance

outperformance

Gestion / Management active with a Behavioral approach

active with a Behavioral approach

**Univers d'investissement /
Anlageuniversum** World with region, country and sector ETF's only
no Derivatives/Options; **no** Investment Vehicles;
no Private Equity **nor any** other Financial product
no commodities

Swiss Performance Index
no Derivatives/Options; **no** Investment Vehicles;
no Private Equity **nor any** other Financial product
no commodities