

The closing prices (Cours de clôture/Tagesschlusskurse) show results gained after taking into account:  
 > all costs (trading, transactions, regulations, stock exchanges, taxes)  
 > all management fees

Date/Datum	<u>Sentiment-Exposure-Index</u> (approx.)		<u>GLOBAL</u>		<u>SWISS</u>	
	Investi / Investiert	Cash	NAV (USD) CH0034642923 CT1248933 CORP	Benchmark MSCI All Country World Index	NAV (CHF) CH0036308838 CT1248891 CORP	Benchmark Swiss Market Index
30.04.2013			641.09	369.42	2639.53	7906.21
29.04.2013			640.58		2643.25	
26.04.2013			637.46		2620.30	
25.04.2013			637.93		2635.50	
24.04.2013			633.28		2623.10	
23.04.2013			632.77		2603.25	
22.04.2013			624.51		2544.65	
19.04.2013			621.37		2544.65	
18.04.2013			611.00		2533.17	
17.04.2013			615.65		2496.63	
16.04.2013			623.03		2557.79	
15.04.2013			613.90		2571.16	
12.04.2013			631.97		2575.25	
11.04.2013			633.02		2589.72	
10.04.2013			629.14		2578.08	
09.04.2013			622.45		2533.09	
08.04.2013			621.52		2547.25	
05.04.2013			615.60		2521.45	
04.04.2013			615.70		2561.40	
03.04.2013			612.90		2597.27	
02.04.2013			624.17		2606.55	
01.04.2013			622.64		pas de cours/geschlossen	
29.03.2013			627.62	360.06	2574.65	7813.67
<b>31.12.2012</b>			<b>576.59</b>	<b>339.75</b>	<b>2264.73</b>	<b>6822.44</b>

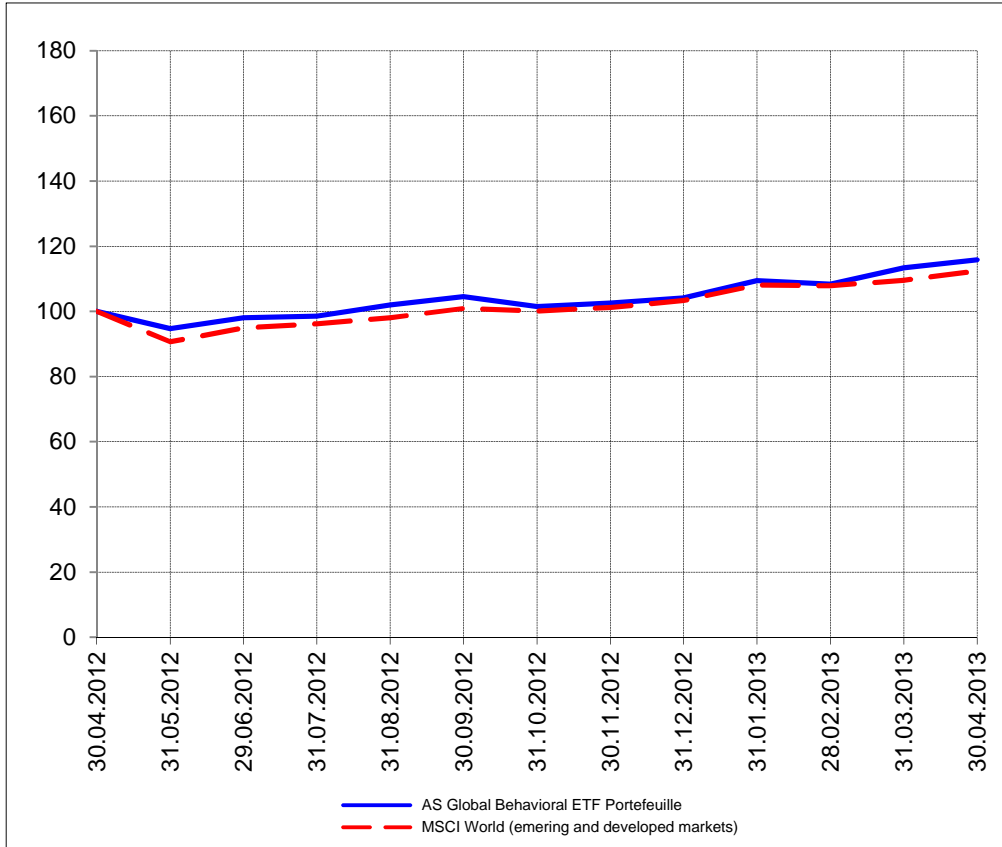
Portrait du Portefeuille Global / Global Portfolio im Überblick

Portrait du Portefeuille Swiss / Swiss Portfolio im Überblick

**GLOBAL**



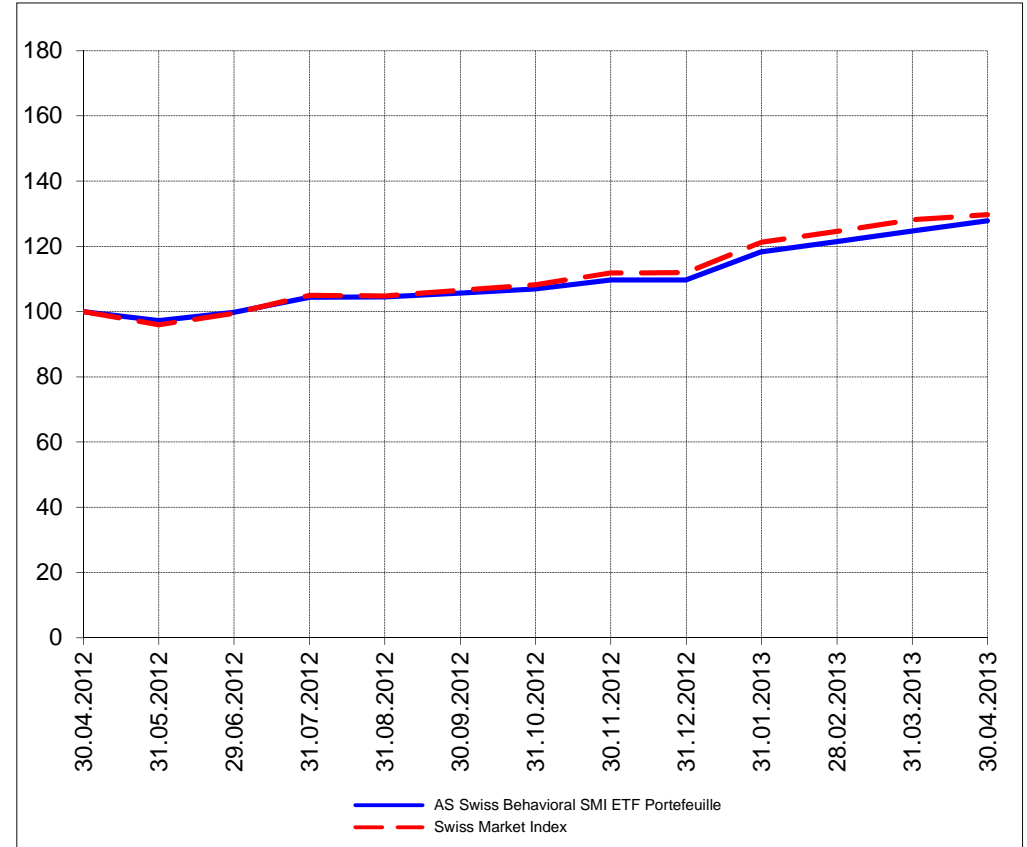
Perf. 12 derniers mois, indexée / Perf. der 12 letzten Monate, indexiert



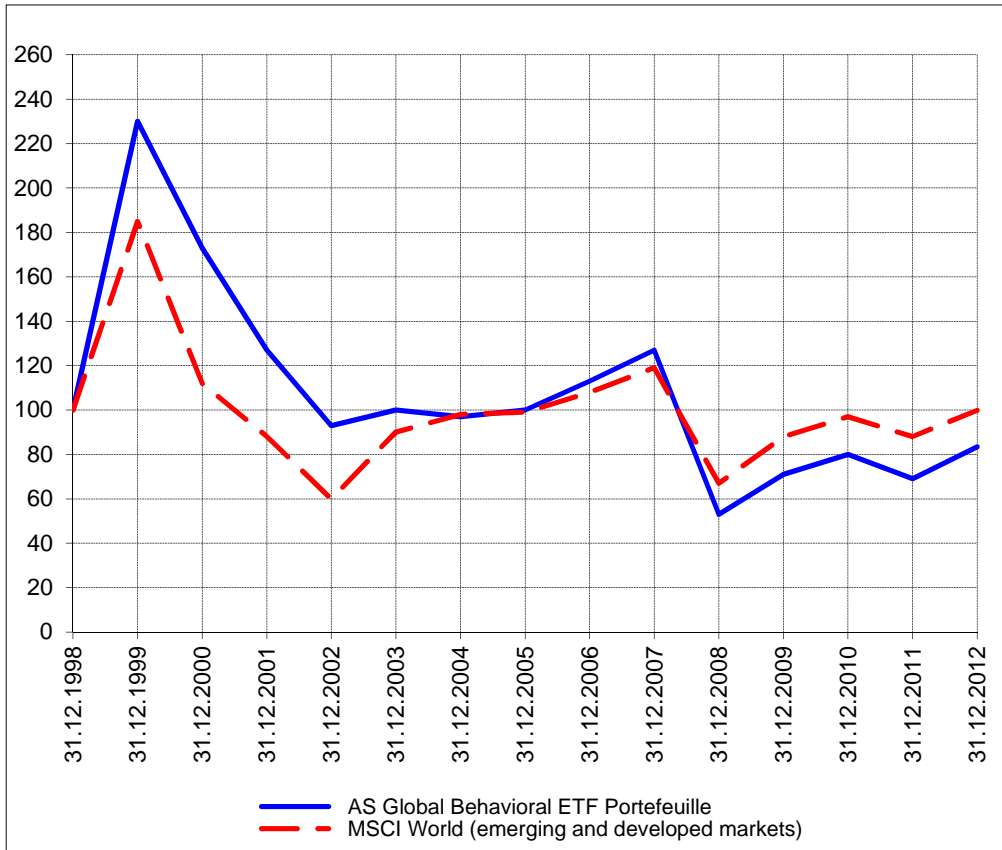
**SWISS**



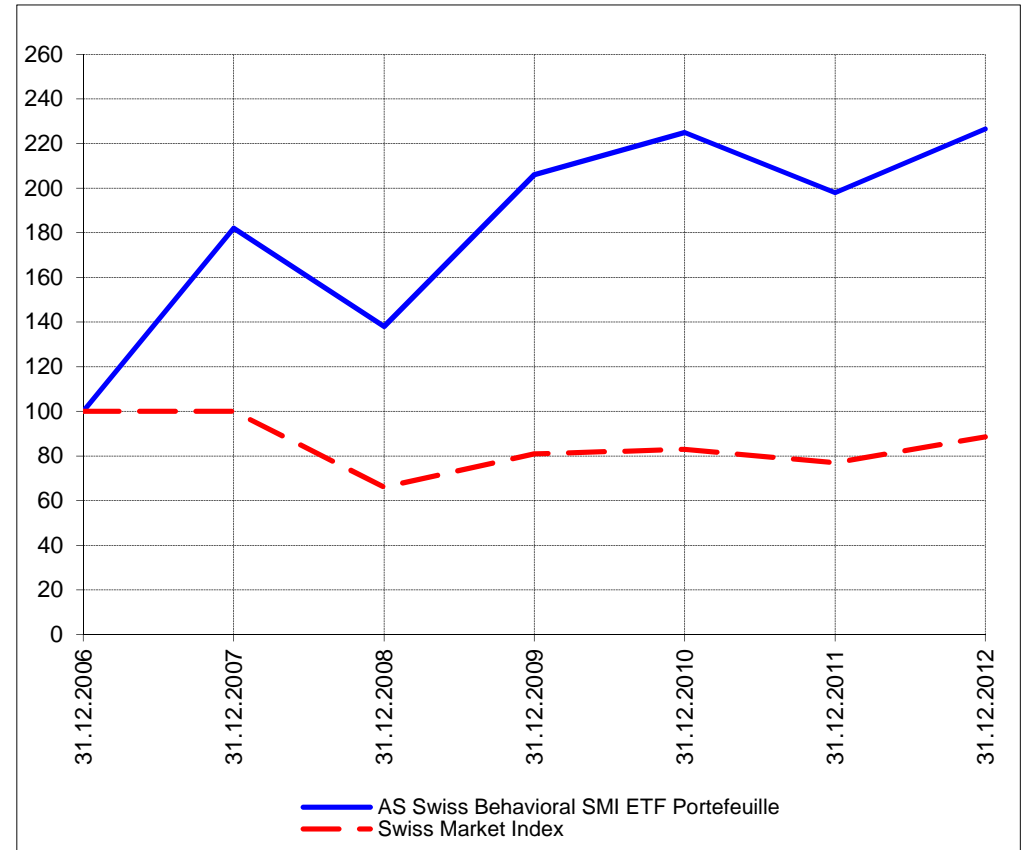
Perf. 12 derniers mois, indexée / Perf. der letzten 12 Monate, indexiert



Perf. depuis création / Perf. seit Lancierung: Global 01. 01. 1999



Perf. depuis création / Perf. seit Lancierung: Swiss 01. 01. 2007



<b>Positions / Positionen</b> différées de 3 mois / um 3 Monate verzögert	SPDR Homebuilders XHB	25.9%
	iShares MSCI Turkey TUR	20.4%
	SPDR Biotech XBI	18.3%
	Vanguard World Stock Index VT	17.0%
	SPDR S&P 500 SPY	10.7%
	PowerShares QQQ	1.2%
	Direxion Financial FAS	0.8%

Préservation / Werterhalt	Cash	5.7%
---------------------------	------	------

XMTCH 100.0%

Cash 0.0%

**Caractéristique / Merkmal**

1. Préservation / Werterhalt  
2. Outperformance

1. Préservation / Werterhalt  
2. Outperformance

**Gestion / Management** active with a Behavioral approach

active with a Behavioral approach

**Univers d'investissement /  
Anlageuniversum**

World with region, country and sector ETF's only  
**no** Derivatives/Options; **no** Investment Vehicles;  
**no** Private Equity **nor any** other Financial product  
**no** commodities

Swiss Performance Index  
**no** Derivatives/Options; **no** Investment Vehicles;  
**no** Private Equity **nor any** other Financial product  
**no** commodities