

The closing prices (Cours de clôture/Tagesschlusskurse) show results gained after taking into account:
 > all costs (trading, transactions, regulations, stock exchanges, taxes)
 > all management fees

		Cours de clôture/Tagesschlusskurse			
	Global (USD) CH0034642923	Benchmark MSCI All Country World Index		Swiss (CHF) CH0036308838	Benchmark Swiss Performance Index
Date/Datum	CT1248933 CORP			CT1248891 CORP	
31.05.2010	pas de cours/geschlossen	277.17		1931.48	5562.49
28.05.2010	464.10			9112.09	
27.05.2010	470.26			1928.31	
26.05.2010	452.52			1885.76	
25.05.2010	457.05			1879.80	
24.05.2010	458.78			pas de cours/geschlossen	
21.05.2010	465.44			1948.38	
20.05.2010	457.71			1935.12	
19.05.2010	481.86			1991.5	
18.05.2010	484.65			2048.73	
17.05.2010	493.88			2043.43	
14.05.2010	493.08			2060.21	
13.05.2010	504.39			pas de cours/geschlossen	
12.05.2010	511.78			2090.69	
11.05.2010	503.51			2034.32	
10.05.2010	504.55			2031.31	
07.05.2010	479.93			1956.86	
06.05.2010	487.80			2015.93	
05.05.2010	507.64			2033.77	
04.05.2010	514.95			2060.66	
03.05.2010	537.23			2117.69	
30.04.2010	535.89	307.35		2125.59	5847.37
31.12.2009	490.28	299.44		2061.68	5626.40

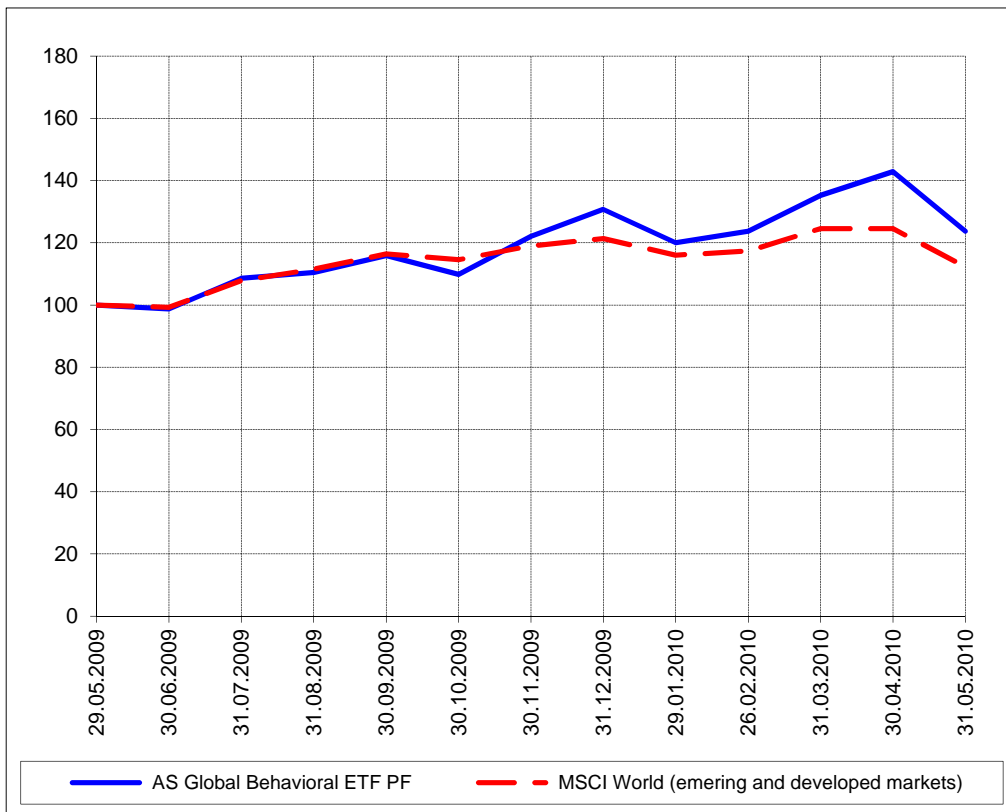
Portrait du Portefeuille Global / Global Portfolio im Überblick



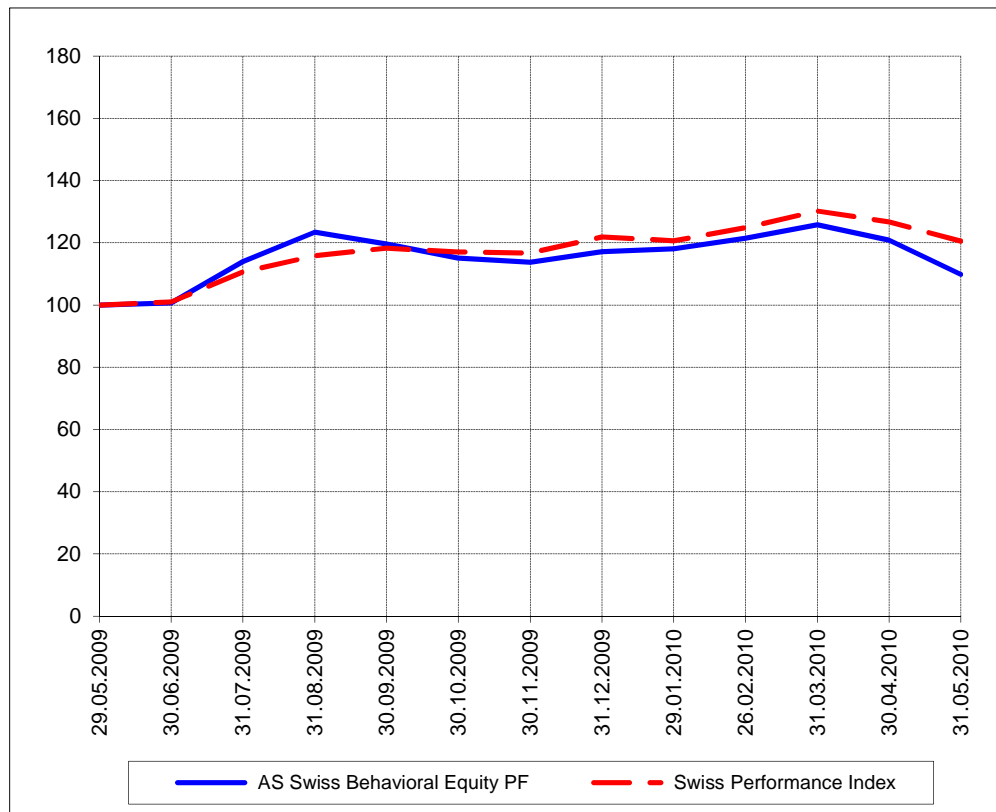
Portrait du Portefeuille Swiss / Swiss Portfolio im Überblick



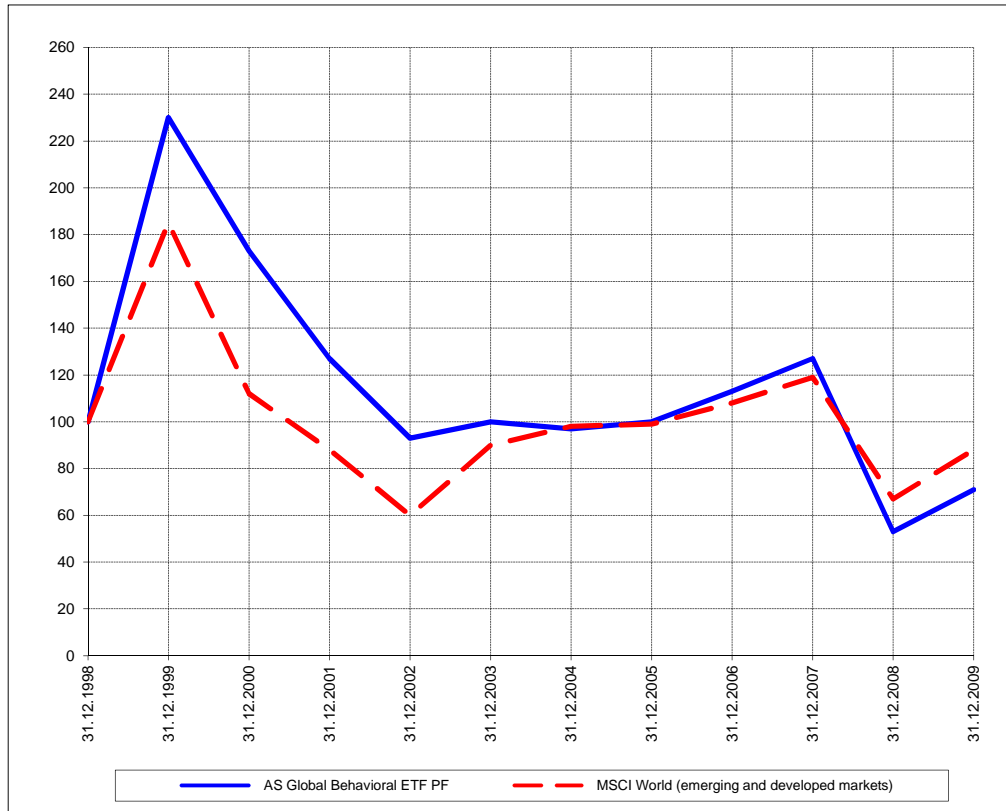
Perf. 12 derniers mois, indexée / Perf. 12 letzten Monaten, indexiert



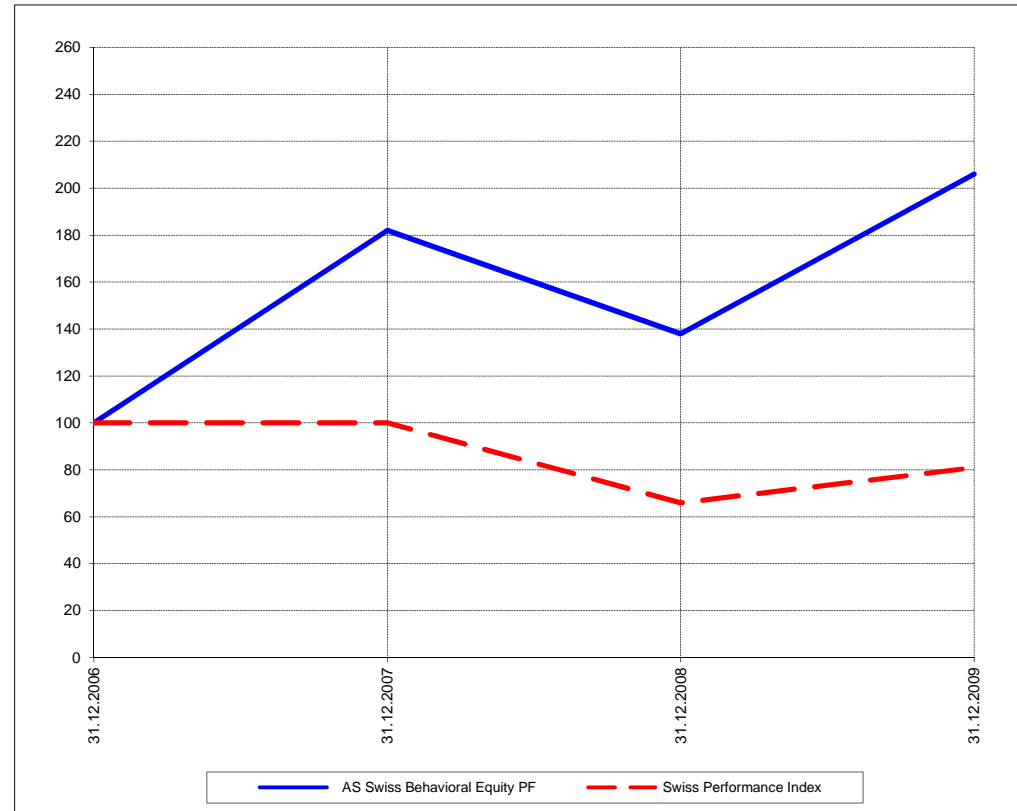
Perf. 12 derniers mois, indexée / Perf. 12 letzten Monaten, indexiert



Perf. depuis création / Perf. seit Lancierung: Global 01. 01. 1999



Perf. depuis création / Perf. seit Lancierung: Swiss 01. 01. 2007



Positions / Positionen différées de 3 mois / um 3 Monate verzögert	Rydex S&P 500 RSU	25.8%
	ProShares NASDAQ Index QLD	25.6%
	SPDR S&P Homebuilders XHB	11.2%
	iShares Oil Equipment IEZ	10.8%
	iShares MSCI Turkey TUR	9.3%
	iShares MSCI South Korea EWY	2.4%

XMTCH	23.0%
Swatch	12.7%
Kudelski	12.0%
Walter Meyer	12.0%
Ublox	11.3%
Uster Technology	7.9%
Acino	6.5%
VZ	5.6%
Belimo	2.4%

Caractéristique / Merkmal outperformance

outperformance

Gestion / Management active with a Behavioral approach

active with a Behavioral approach

**Univers d'investissement /
Anlageuniversum** World with region, country and sector ETF's only
no Derivatives/Options; **no** Investment Vehicles;
no Private Equity **nor any** other Financial product
no commodities

Swiss Performance Index
no Derivatives/Options; **no** Investment Vehicles;
no Private Equity **nor any** other Financial product
no commodities