

The closing prices (Cours de clôture/Tagesschlusskurse) show results gained after taking into account:
 > all costs (trading, transactions, regulations, stock exchanges, taxes)
 > all management fees

Date/Datum	Cours de clôture/Tagesschlusskurse		Cours de clôture/Tagesschlusskurse	
	Global (USD) CH0034642923 CT1248933 CORP	Benchmark MSCI All Country World Index	Swiss (CHF) CH0036308838 CT1248891 CORP	Benchmark Swiss Performance Index
31.05.2011	569.32	347.90	2409.58	6023.04
30.05.2011	pas de cours/geschlossen		2399.60	
27.05.2011	561.15		2400.83	
26.05.2011	558.77		2376.63	
25.05.2011	554.83		2386.65	
24.05.2011	550.34		2418.16	
23.05.2011	550.33		2381.21	
20.05.2011	559.18		2427.87	
19.05.2011	563.27		2430.29	
18.05.2011	562.32		2408.78	
17.05.2011	554.42		2399.84	
16.05.2011	554.58		2412.30	
13.05.2011	561.50		2420.64	
12.05.2011	569.80		2427.94	
11.05.2011	567.36		2426.83	
10.05.2011	579.36		2420.93	
09.05.2011	573.36		2403.88	
06.05.2011	566.90		2410.24	
05.05.2011	565.44		2395.16	
04.05.2011	572.86		2412.17	
03.05.2011	587.23		2439.83	
02.05.2011	590.62		2455.37	
29.04.2011	591.27	356.90	2443.59	6013.19
31.12.2010	550.55	330.64	2250.31	5790.62

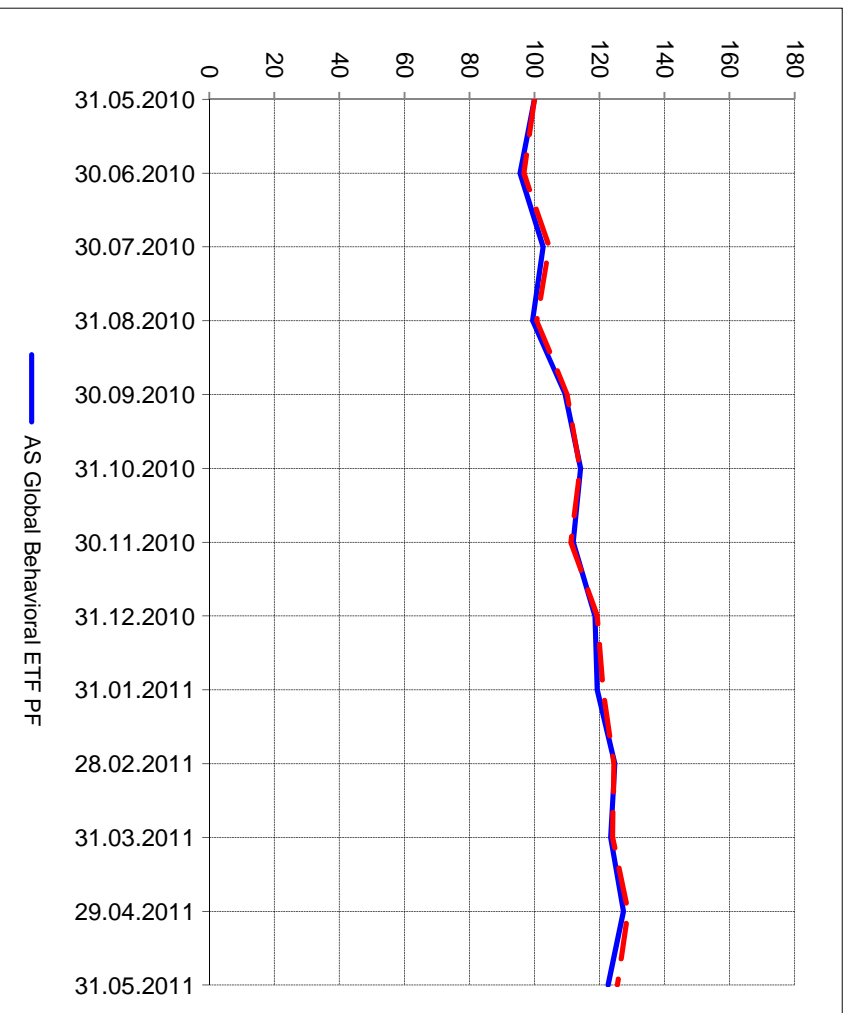
Portrait du Portefeuille Global / Global Portfolio im Überblick



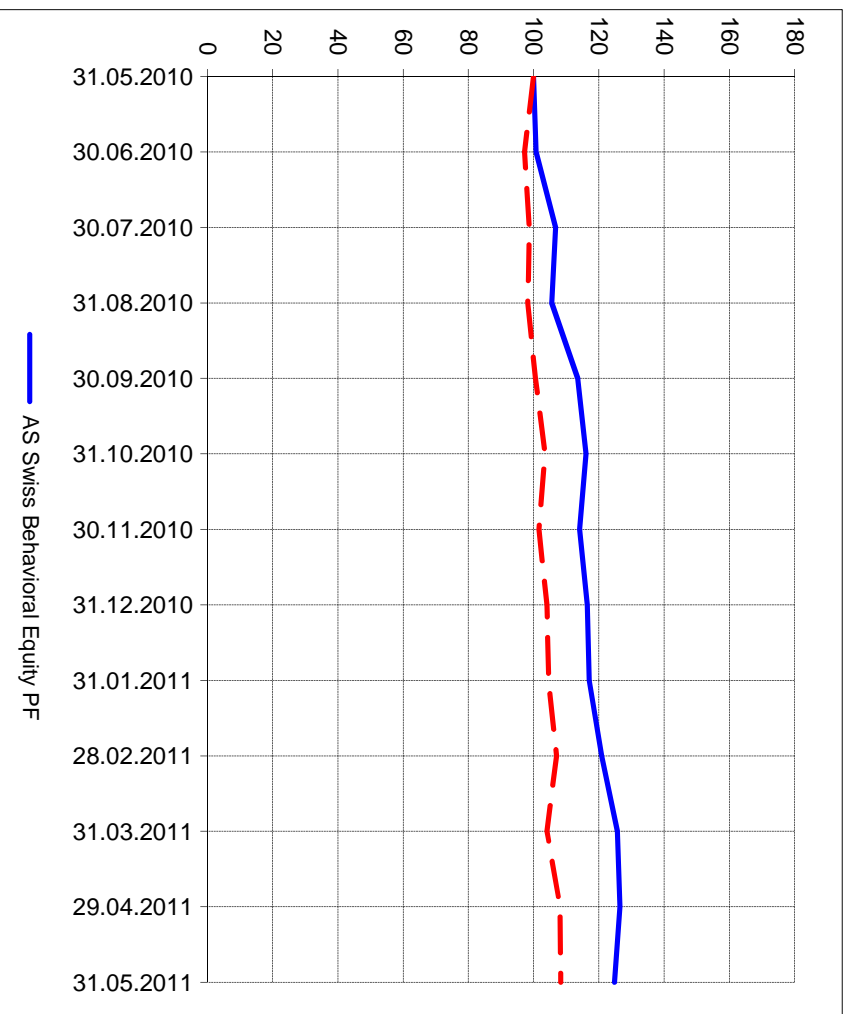
Portrait du Portefeuille Swiss / Swiss Portfolio im Überblick



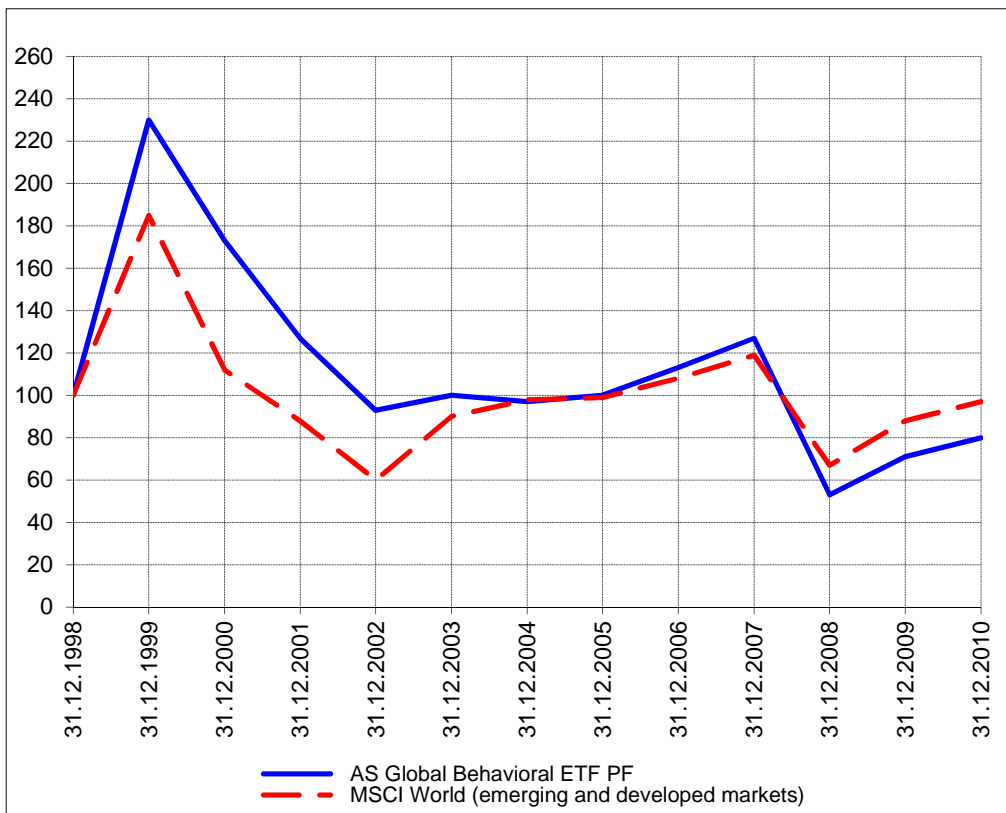
Perf. 12 derniers mois, indexée / Perf. 12 letzten Monaten, indexiert



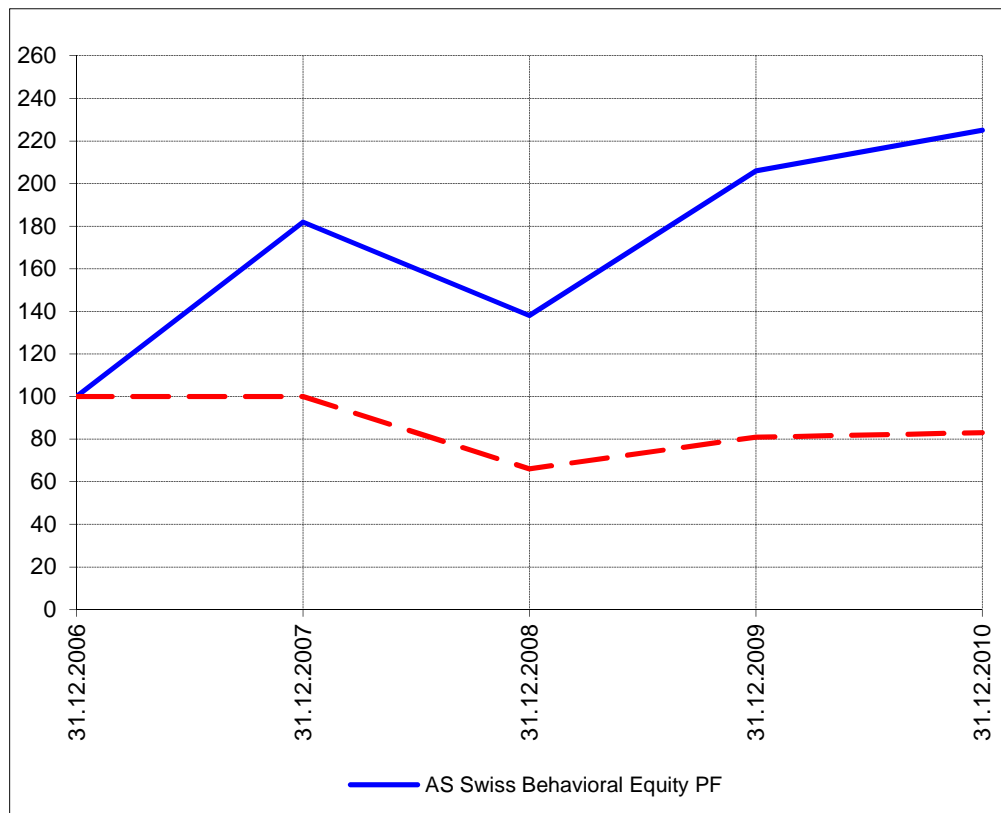
Perf. 12 derniers mois, indexée / Perf. 12 letzten Monaten, indexiert



Perf. depuis création / Perf. seit Lancierung: Global 01. 01. 1999



Perf. depuis création / Perf. seit Lancierung: Swiss 01. 01. 2007



Positions / Positionen

différées de 3 mois /
um 3 Monate verzögert

Rydex S&P 500 RSU	27.9%
ProShares NASDAQ Index QLD	27.4%
SPDR Energy XLE	5.3%
ProShares Financials UYG	2.9%
ProShares Real Estate URE	2.8%

Walter Meyer	11.3%
Rieter	10.8%
Uster Techn	10.3%
Schaffner	9.8%
Zehnder	9.6%
AFG	9.5%
Bucher	8.3%
Forbo	8.0%
Lem	4.3%
Daetwyler	2.8%
Swiss Re	2.7%
UBS	2.6%
ZFS	2.6%
Metall ZG	2.5%
Vaudoise	2.5%
Sulzer	2.2%

Caractéristique / Merkmal

outperformance

outperformance

Gestion / Management

active with a Behavioral approach

active with a Behavioral approach

Univers d'investissement / Anlageuniversum

World with region, country and sector ETF's only
no Derivatives/Options; **no** Investment Vehicles;
no Private Equity **nor any** other Financial product
no commodities

Swiss Performance Index
no Derivatives/Options; **no** Investment Vehicles;
no Private Equity **nor any** other Financial product
no commodities