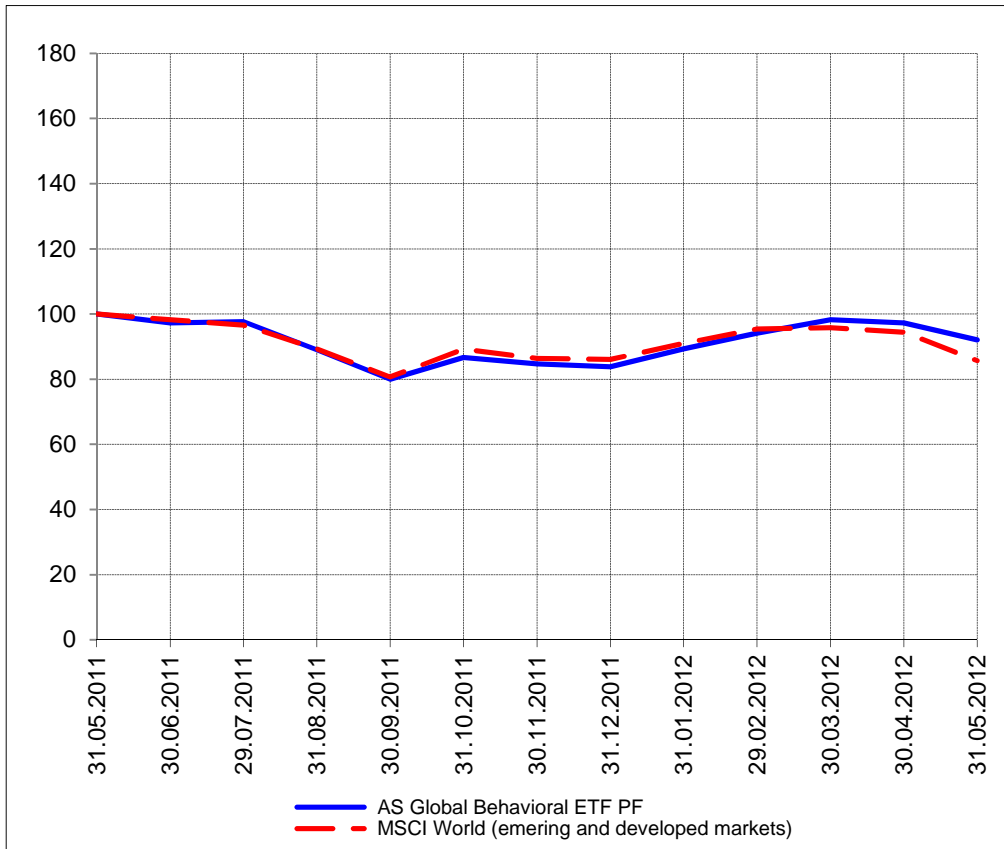


The closing prices (Cours de clôture/Tagesschlusskurse) show results gained after taking into account:  
 > all costs (trading, transactions, regulations, stock exchanges, taxes)  
 > all management fees

Date/Datum	<u>Sentiment-Exposure-Index</u> (approx.)		<u>GLOBAL</u>		<u>SWISS</u>	
	Investi / Investiert	Cash	NAV (USD) CH0034642923 CT1248933 CORP	Benchmark MSCI All Country World Index	NAV (CHF) CH0036308838 CT1248891 CORP	Benchmark Swiss Market Index
31.05.2012			524.05	297.98	2007.01	5850.18
30.05.2012			525.34		2025.45	
29.05.2012			532.15		2028.14	
28.05.2012			pas de cours/geschlossen		pas de cours/geschlossen	
25.05.2012			526.02		2016.81	
24.05.2012			526.04		2013.79	
23.05.2012			526.13		2003.47	
22.05.2012			524.23		2027.17	
21.05.2012			522.46		2003.09	
18.05.2012			513.23		1998.17	
17.05.2012			518.00		pas de cours/geschlossen	
16.05.2012			530.15		2016.76	
15.05.2012			533.28		2014.11	
14.05.2012			533.80		2017.30	
11.05.2012			539.51		2041.50	
10.05.2012			537.95		2033.19	
09.05.2012			539.24		2034.04	
08.05.2012			539.44		2049.06	
07.05.2012			542.33		2065.78	
04.05.2012			541.92		2054.38	
03.05.2012			552.97		2066.53	
02.05.2012			558.87		2073.28	
01.05.2012			555.69		pas de cours/geschlossen	
30.04.2012			553.54	328.67	2065.20	6096.34
<b>30.12.2011</b>			<b>477.20</b>	<b>299.51</b>	<b>1979.61</b>	<b>5936.23</b>

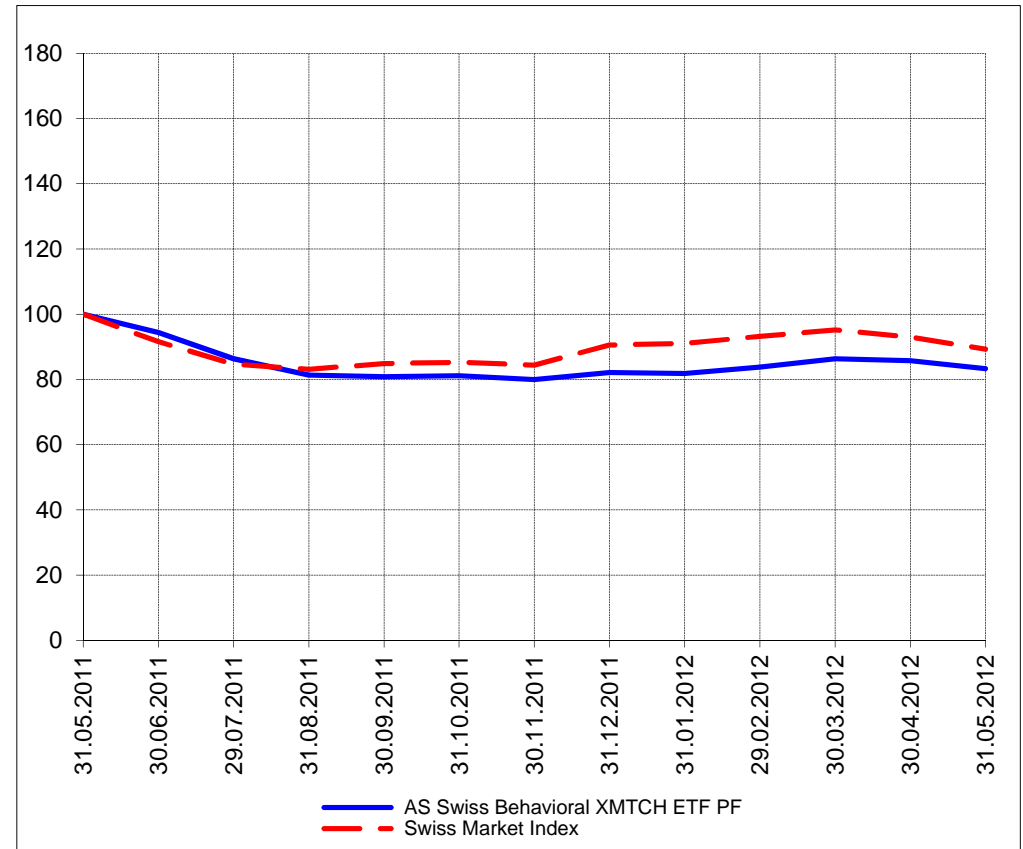
GLOBAL

Perf. 12 derniers mois, indexée / Perf. der 12 letzten Monate, indexiert

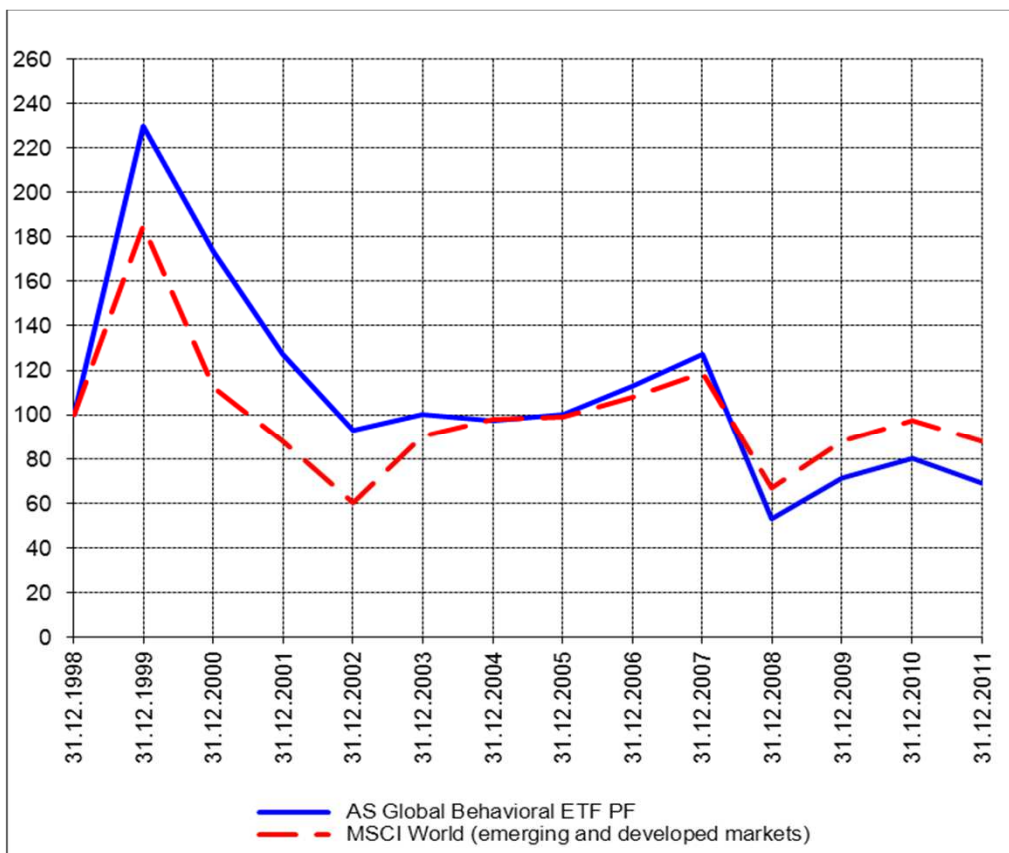


SWISS

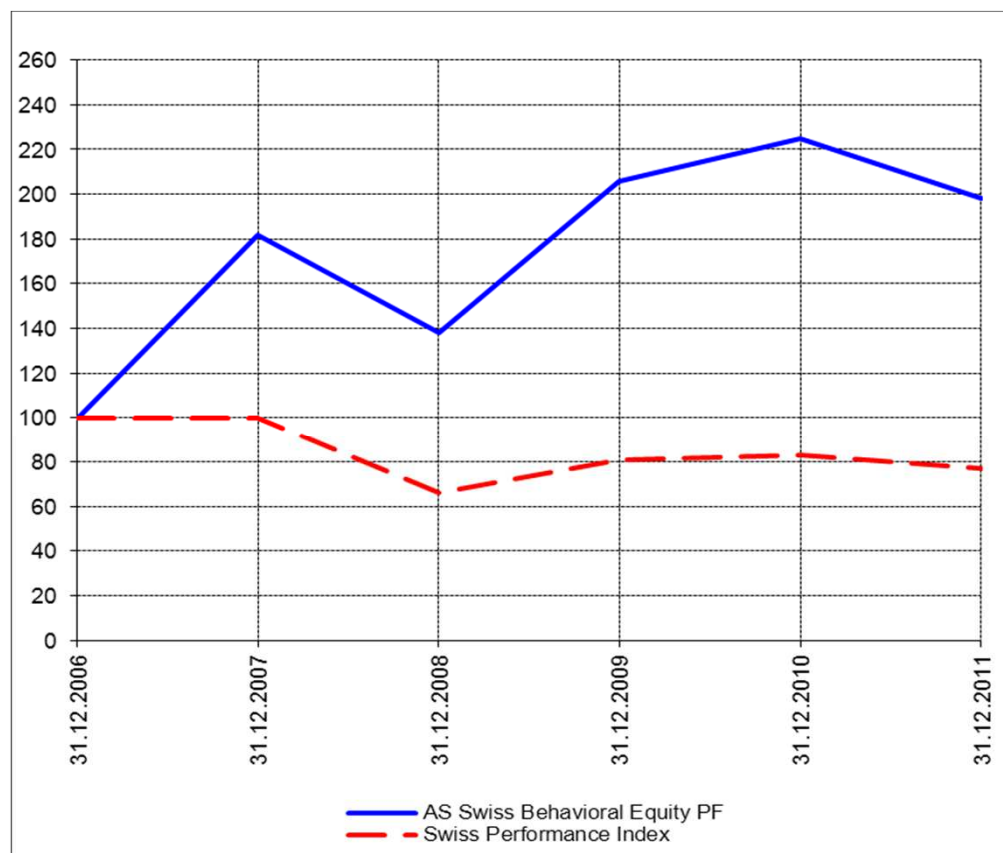
Perf. 12 derniers mois, indexée / Perf. der letzten 12 Monate, indexiert



Perf. depuis création / Perf. seit Lancierung: Global 01. 01. 1999



Perf. depuis création / Perf. seit Lancierung: Swiss 01. 01. 2007



**Positions / Positionen**

différées de 3 mois /  
um 3 Monate verzögert

SPDR Homebuilders XHB	20.7%
ProShares NASDAQ Index QLD	20.5%
SPDR Biotech XBI	14.5%
SPDR S&P 500 SPY	12.7%
SPDR Energy XLE	7.6%
PowerShares QQQ	6.8%

XMTCH

94.0%

**Caractéristique / Merkmal**

1. Préservation / Werterhalt  
2. Outperformance

1. Préservation / Werterhalt  
2. Outperformance

**Gestion / Management**

active with a Behavioral approach

active with a Behavioral approach

**Univers d'investissement /  
Anlageuniversum**

World with region, country and sector ETF's only  
**no** Derivatives/Options; **no** Investment Vehicles;  
**no** Private Equity **nor any** other Financial product  
**no** commodities

Swiss Performance Index  
**no** Derivatives/Options; **no** Investment Vehicles;  
**no** Private Equity **nor any** other Financial product  
**no** commodities