

The closing prices (Cours de clôture/Tagesschlusskurse) show results gained after taking into account:
 > all costs (trading, transactions, regulations, stock exchanges, taxes)
 > all management fees

Date/Datum	Cours de clôture/Tagesschlusskurse		Cours de clôture/Tagesschlusskurse	
	Global (USD) CH0034642923 CT1248933 CORP	Benchmark MSCI All Country World Index	Swiss (CHF) CH0036308838 CT1248891 CORP	Benchmark Swiss Performance Index
30.06.2010	443.57	268.25	1945.71	5407.82
29.06.2010	443.30		1970.68	
28.06.2010	455.99		2008.28	
25.06.2010	457.45		1992.98	
24.06.2010	452.80		1988.48	
23.06.2010	461.01		2019.73	
22.06.2010	459.79		2017.01	
21.06.2010	469.86		2025.74	
18.06.2010	472.27		1996.46	
17.06.2010	475.06		1981.10	
16.06.2010	474.82		1993.81	
15.06.2010	476.67		1980.47	
14.06.2010	464.99		1977.98	
11.06.2010	464.18		1969.48	
10.06.2010	461.52		1963.32	
09.06.2010	445.66		1940.11	
08.06.2010	446.39		1912.39	
07.06.2010	441.48		1922.79	
04.06.2010	447.38		1940.01	
03.06.2010	467.52		1952.17	
02.06.2010	467.07		1928.55	
01.06.2010	455.02		1928.07	
31.05.2010	464.10	277.17	1931.48	5562.49
31.12.2009	490.28	299.44	2061.68	5626.40

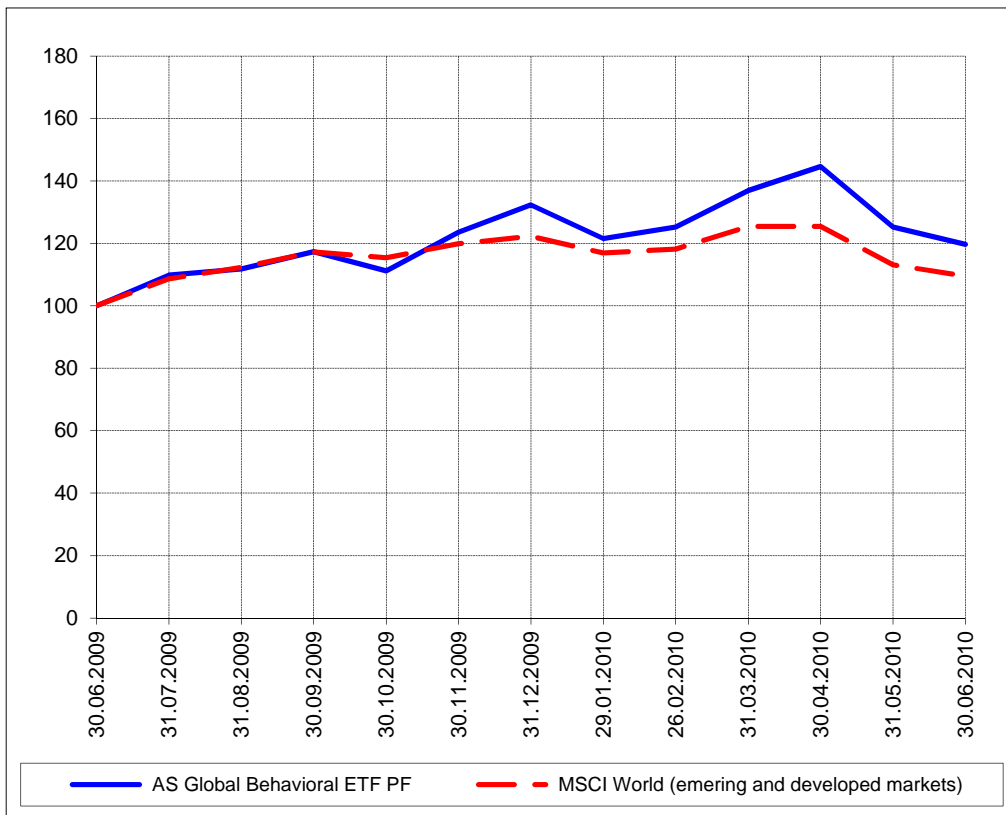
Portrait du Portefeuille Global / Global Portfolio im Überblick



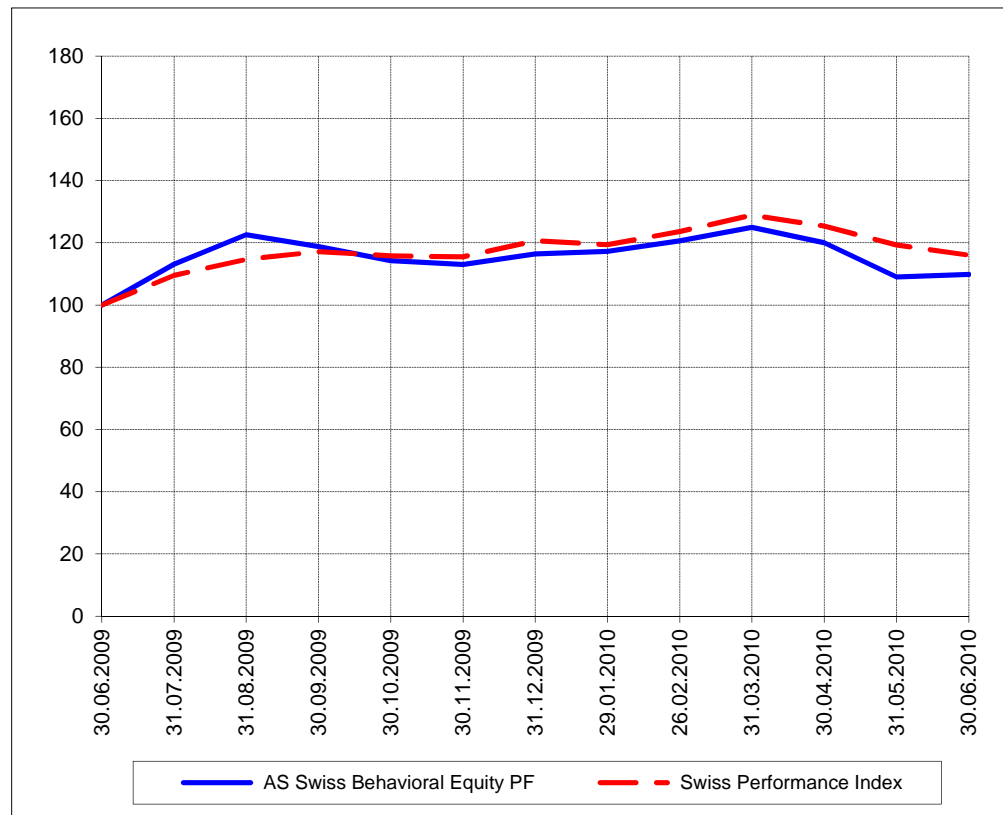
Portrait du Portefeuille Swiss / Swiss Portfolio im Überblick



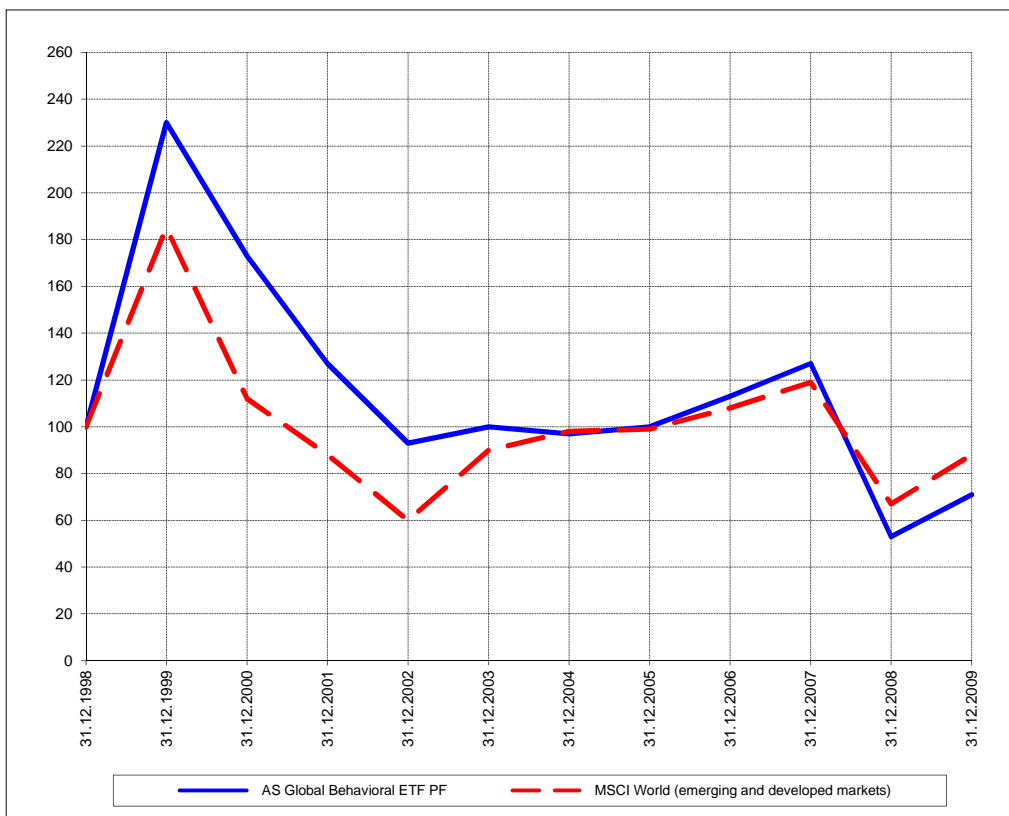
Perf. 12 derniers mois, indexée / Perf. 12 letzten Monaten, indexiert



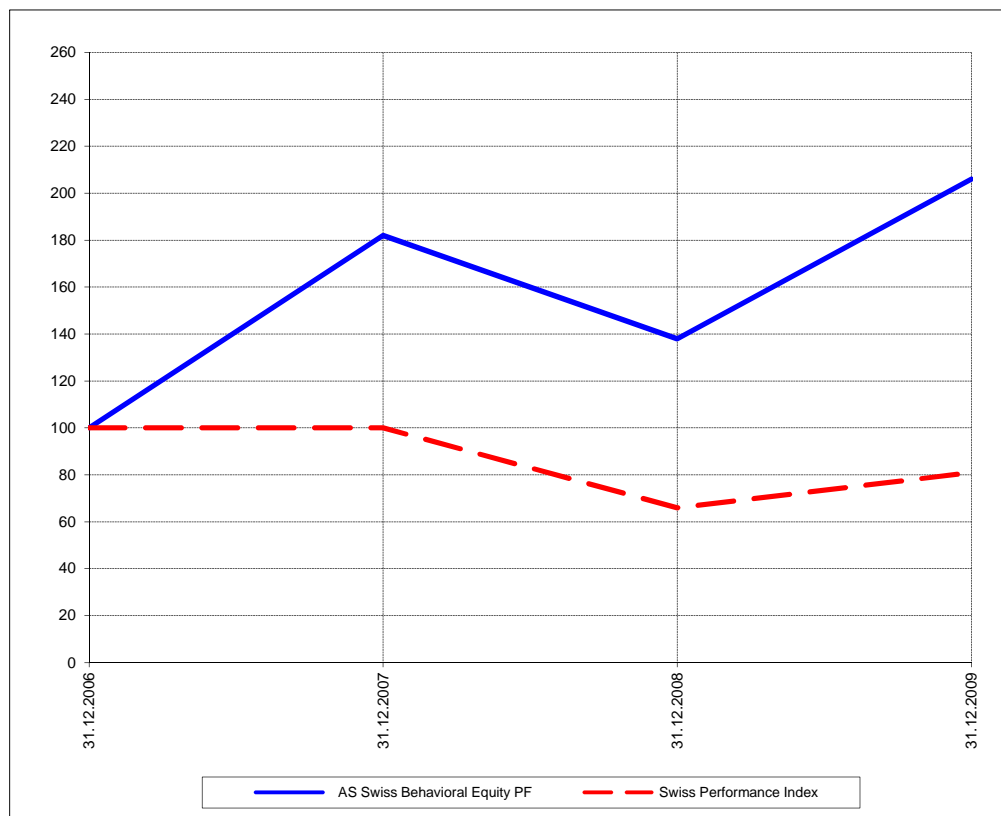
Perf. 12 derniers mois, indexée / Perf. 12 letzten Monaten, indexiert



Perf. depuis création / Perf. seit Lancierung: Global 01. 01. 1999



Perf. depuis création / Perf. seit Lancierung: Swiss 01. 01. 2007



Positions / Positionen différées de 3 mois / um 3 Monate verzögert	ProShares NASDAQ Index QLD	27.1%
	Rydex S&P 500 RSU	26.5%
	SPDR S&P Homebuilders XHB	14.7%
	iShares Oil Equipment IEZ	9.8%
	iShares MSCI Turkey TUR	6.0%
	SPDR DJ Wilshire REIT RWR	5.7%
	iShares MSCI South Korea EWY	4.8%

Walter Meyer	13.2%
Swatch	12.9%
Kudelski	12.6%
Ublox	10.5%
VZ	10.0%
Richemont	8.3%
Burckhardt	8.0%
Uster Technology	7.3%
Schindler	6.6%
Lifewatch	6.3%
BCV	2.9%

Caractéristique / Merkmal outperformance

outperformance

Gestion / Management active with a Behavioral approach

active with a Behavioral approach

**Univers d'investissement /
Anlageuniversum** World with region, country and sector ETF's only
no Derivatives/Options; **no** Investment Vehicles;
no Private Equity **nor any** other Financial product
no commodities

Swiss Performance Index
no Derivatives/Options; **no** Investment Vehicles;
no Private Equity **nor any** other Financial product
no commodities