











The closing prices (Cours de clôture/Tagesschlusskurse) show results gained after taking into account:
 > all costs (trading, transactions, regulations, stock exchanges, taxes)
 > all management fees

Date/Datum	<u>Sentiment-Exposure-Index</u> (approx.)		<u>GLOBAL</u>		<u>SWISS</u>	
	Investi / Investiert	Cash	NAV (USD) CH0034642923 CT1248933 CORP	Benchmark MSCI All Country World Index	NAV (CHF) CH0036308838 CT1248891 CORP	Benchmark Swiss Market Index
29.06.2012			542.67	312.11	2060.86	6066.86
28.06.2012			529.14		2037.33	
27.06.2012			532.38		2043.55	
26.06.2012			526.87		2030.84	
25.06.2012			523.43		2026.51	
22.06.2012			530.96		2040.31	
21.06.2012			526.32		2050.31	
20.06.2012			536.49		2048.96	
19.06.2012			535.20		2054.50	
18.06.2012			530.64		2027.04	
15.06.2012			526.84		2019.00	
14.06.2012			522.87		2019.72	
13.06.2012			517.32		2022.35	
12.06.2012			520.80		2028.81	
11.06.2012			515.28		2011.34	
08.06.2012			524.77		2012.54	
07.06.2012			518.72		2012.06	
06.06.2012			520.21		2002.25	
05.06.2012			511.04		1973.16	
04.06.2012			505.64		1975.65	
01.06.2012			508.36		1992.47	
31.05.2012			524.05	297.98	2007.01	5850.18
30.12.2011			477.20	299.51	1979.61	5936.23

Portrait du Portefeuille Global / Global Portfolio im Überblick



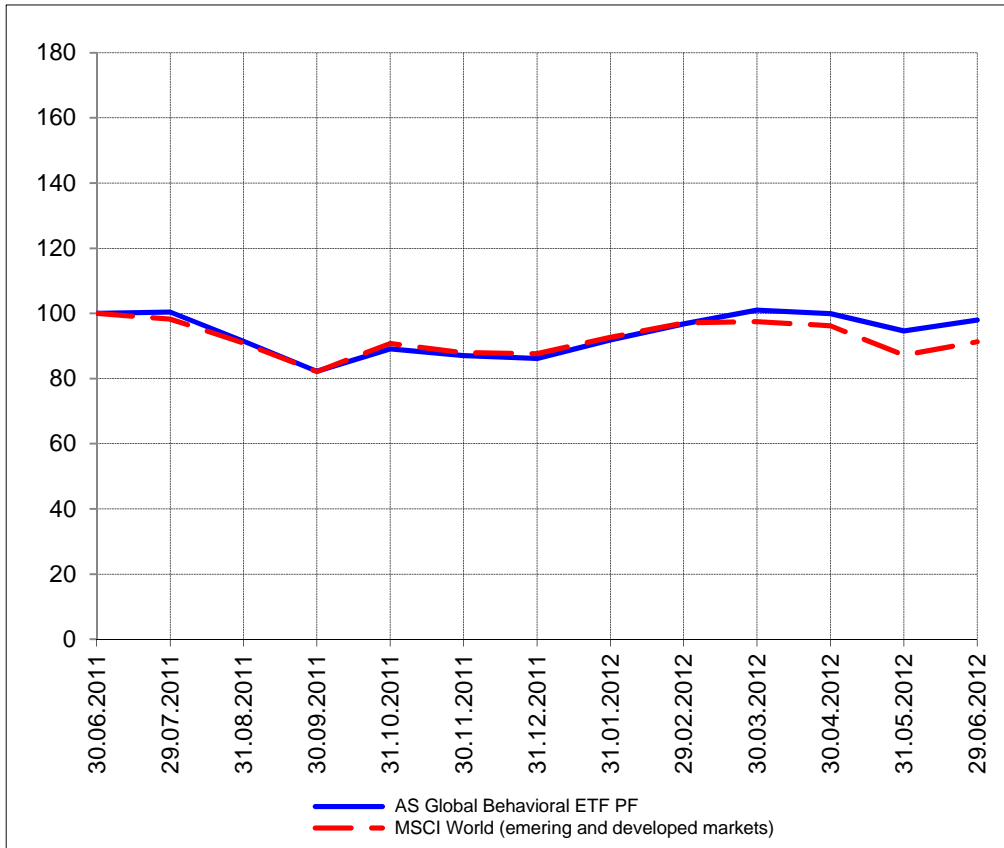
Portrait du Portefeuille Swiss / Swiss Portfolio im Überblick



GLOBAL



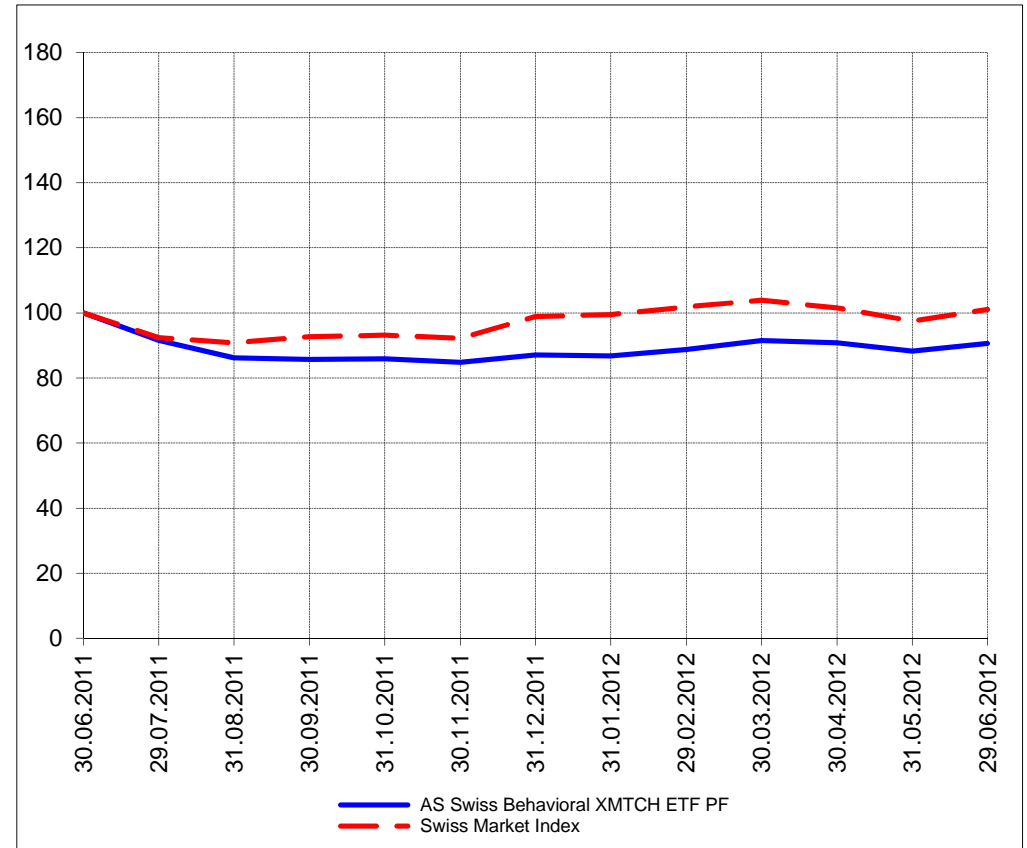
Perf. 12 derniers mois, indexée / Perf. der 12 letzten Monate, indexiert



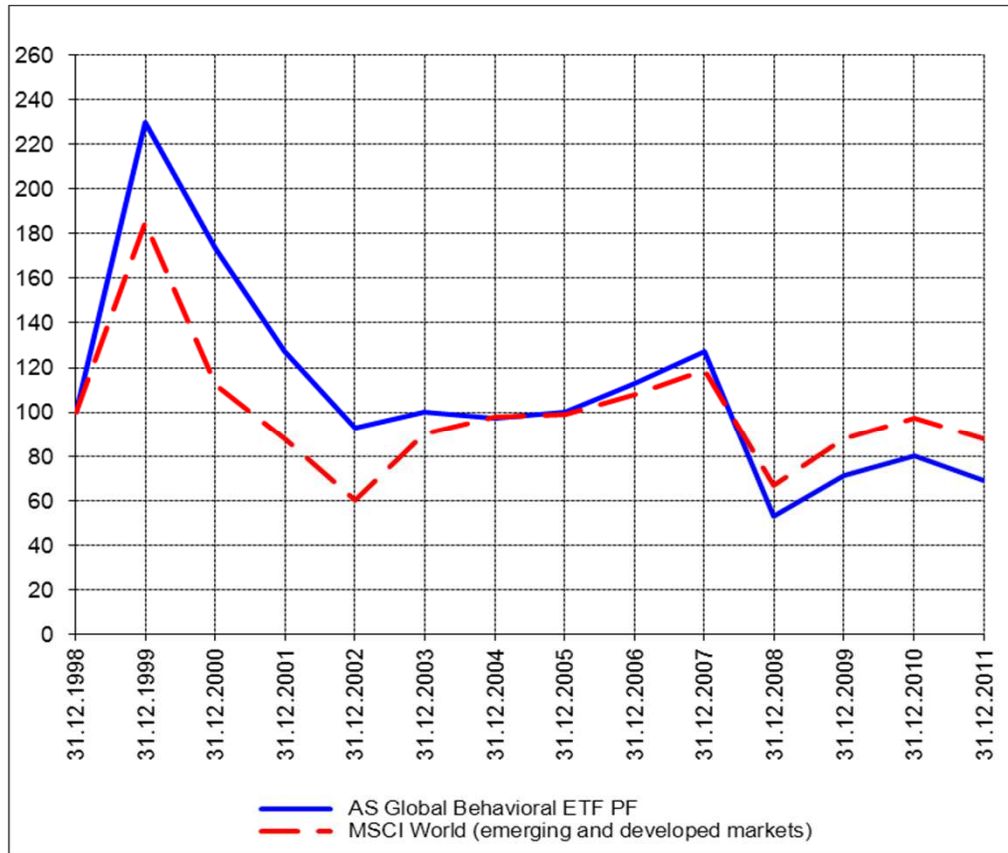
SWISS



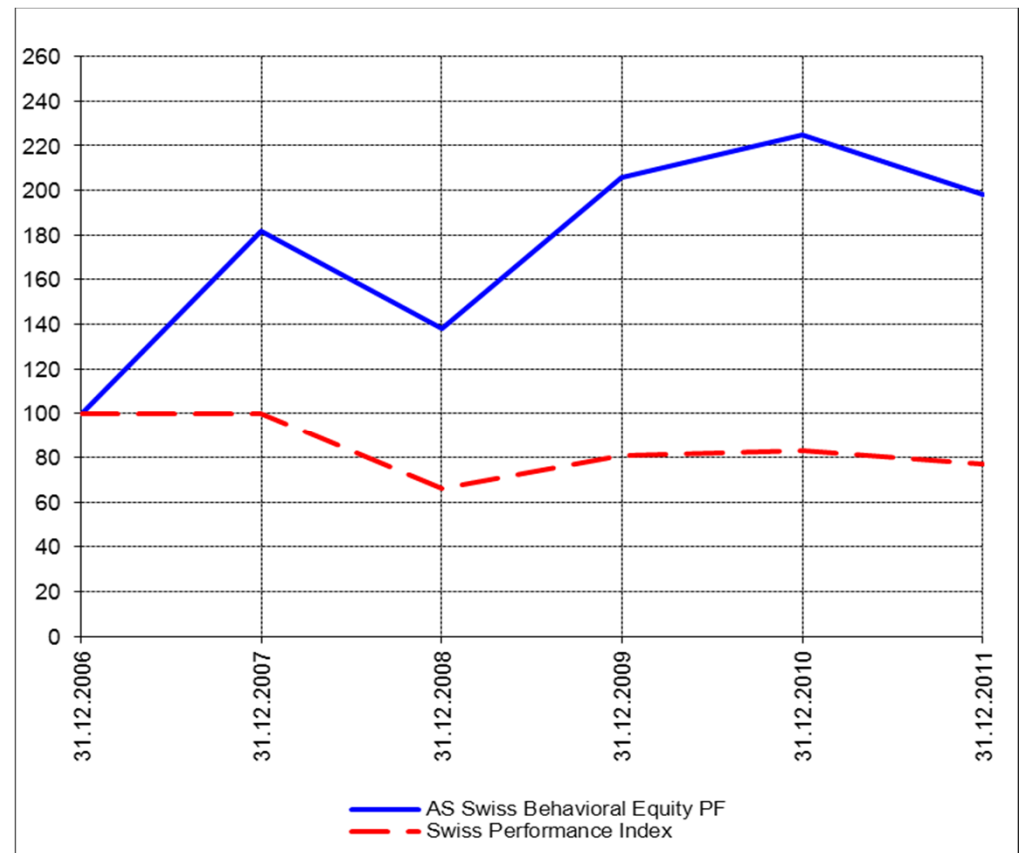
Perf. 12 derniers mois, indexée / Perf. der letzten 12 Monate, indexiert



Perf. depuis création / Perf. seit Lancierung: Global 01. 01. 1999



Perf. depuis création / Perf. seit Lancierung: Swiss 01. 01. 2007



Positions / Positionen différées de 3 mois / um 3 Monate verzögert	ProShares NASDAQ Index QLD	21.7%
	SPDR Homebuilders XHB	21.4%
	PowerShares QQQ	16.2%
	SPDR Biotech XBI	14.2%
	SPDR S&P 500 SPY	4.4%

XMTCH 99.0%

Caractéristique / Merkmal

1. Préservation / Werterhalt
2. Outperformance

1. Préservation / Werterhalt
2. Outperformance

Gestion / Management active with a Behavioral approach

active with a Behavioral approach

**Univers d'investissement /
Anlageuniversum**

World with region, country and sector ETF's only
no Derivatives/Options; **no** Investment Vehicles;
no Private Equity **nor any** other Financial product
no commodities

Swiss Performance Index
no Derivatives/Options; **no** Investment Vehicles;
no Private Equity **nor any** other Financial product
no commodities