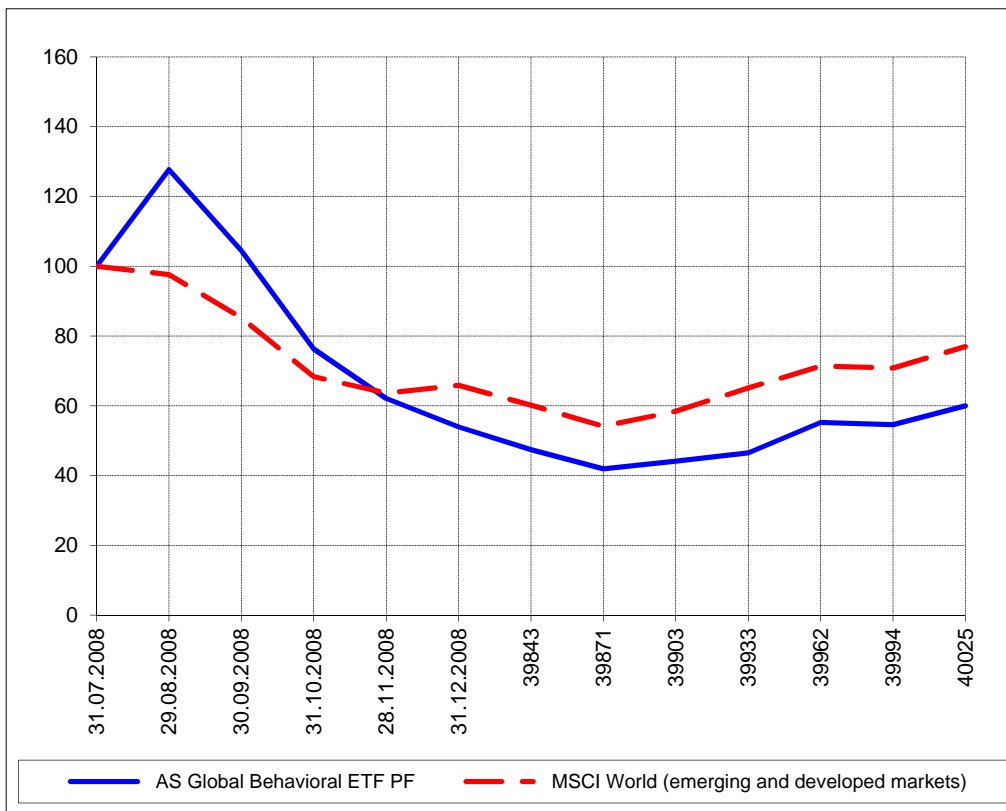


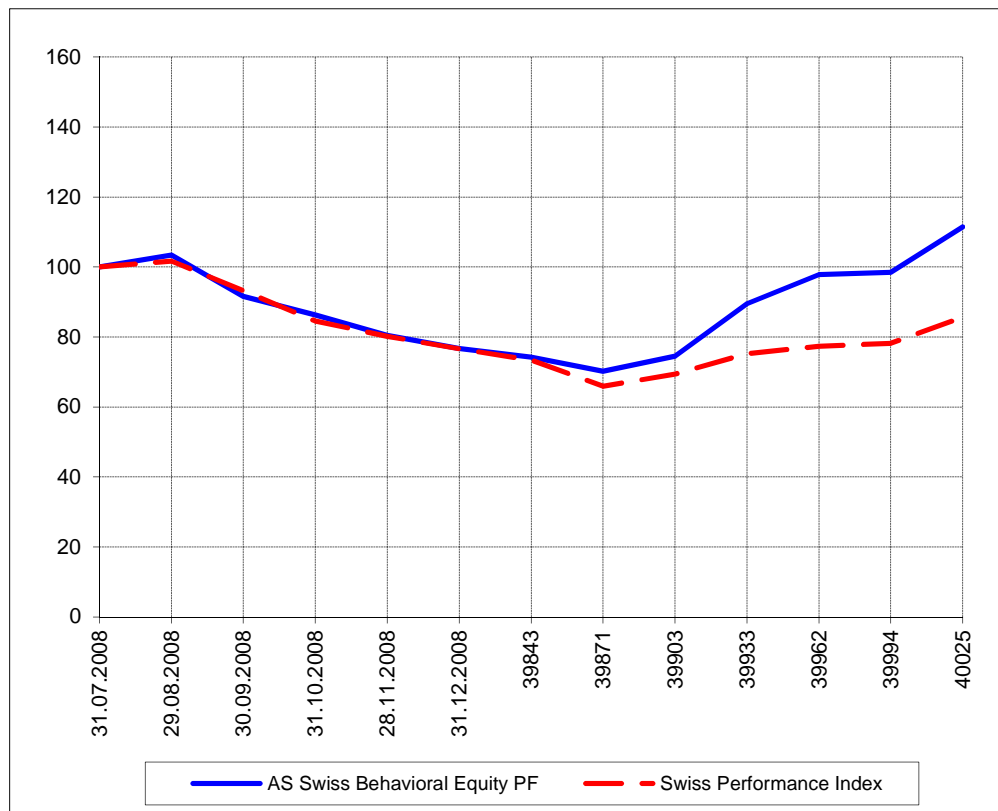
The closing prices (Cours de clôture/Tagesschlusskurse) show results gained after taking into account:
 > all costs (trading, transactions, regulations, stock exchanges, taxes)
 > all management fees

Date/Datum	Global (USD)	Benchmark	Cours de clôture/Tagesschlusskurse		Benchmark
	CH0034642923 CT1248933 CORP	MSCI All Country World Index	Swiss (CHF)		Swiss Performance Index
			CH0036308838 CT1248891 CORP		
31.7.09	407.23	266.14	2004.78		5109.40
30.7.09	406.36		1986.76		
29.7.09	397.78		1936.55		
28.7.09	406.61		1921.88		
27.7.09	407.36		1919.80		
24.7.09	404.12		1891.02		
23.7.09	404.38		1886.85		
22.7.09	391.61		1859.15		
21.7.09	391.73		1857.50		
20.7.09	392.12		1860.97		
17.7.09	380.53		1821.04		
16.7.09	377.64		1817.59		
15.7.09	375.44		1809.58		
14.7.09	357.17		1756.16		
13.7.09	355.27		1724.03		
10.7.09	349.52		1689.18		
9.7.09	352.00		1704.85		
8.7.09	347.58		1695.08		
7.7.09	351.75		1738.38		
6.7.09	363.35		1747.14		
3.7.09	pas de cours/geschlossen		1747.14		
2.7.09	362.76		1769.00		
1.7.09	373.53		1797.65		
30.6.09	370.43	244.90	1771.12		4662.64
31.12.2008	366.17	227.68	1379.13		4567.57

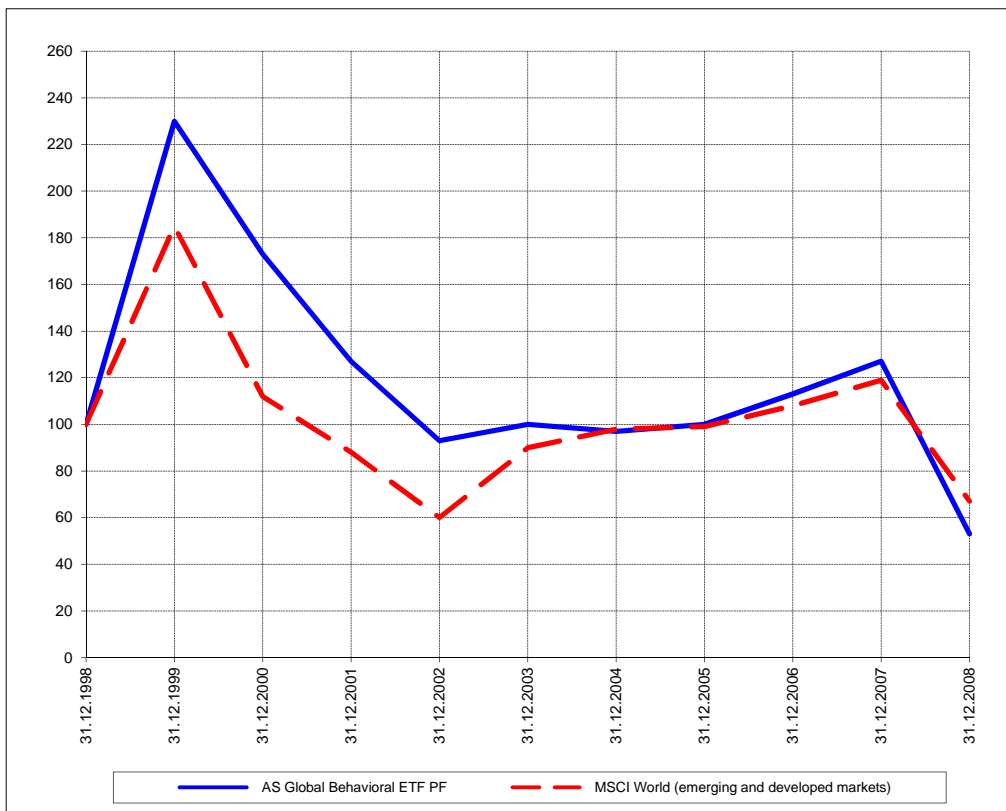
Perf. 12 derniers mois, indexée / Perf. 12 letzten Monaten, indexiert



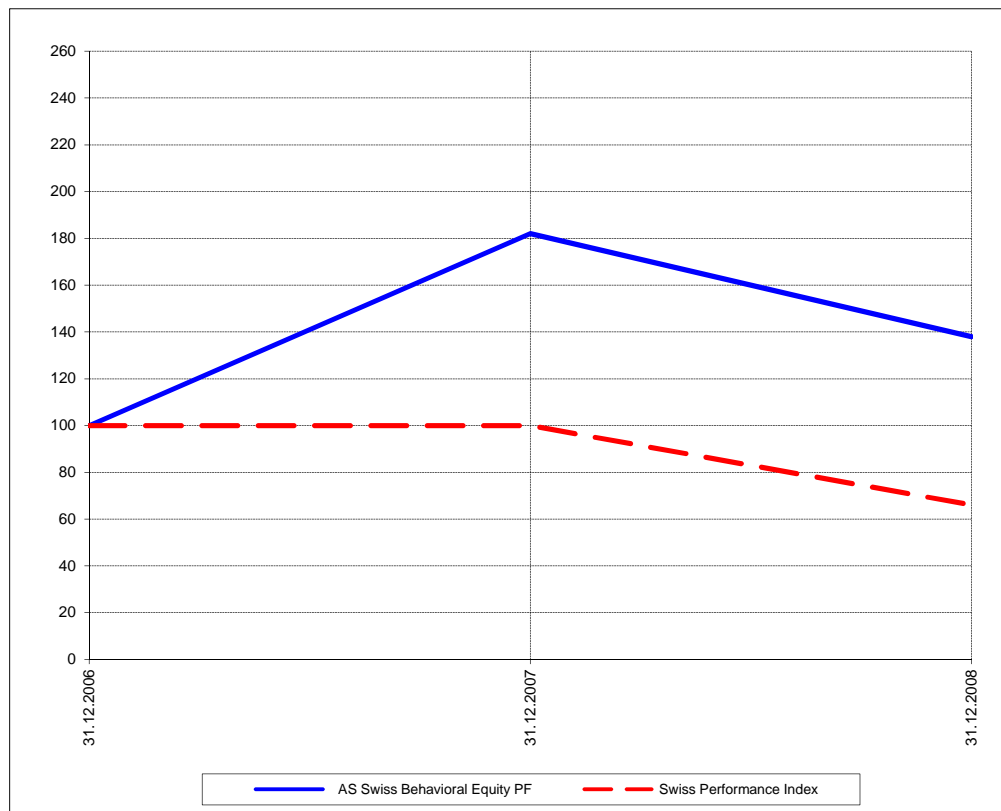
Perf. 12 derniers mois, indexée / Perf. 12 letzten Monaten, indexiert



Perf. depuis création / Perf. seit Lancierung: Global 01. 01. 1999



Perf. depuis création / Perf. seit Lancierung: Swiss 01. 01. 2007



Positions / Positionen	Vanguard World Index VT	36.9 %
différées de 3 mois /	iShares South America ILF	20.6 %
um 3 Monate verzögert	iShares Emerging Markets EEM	16.5 %
	iShares China FXI	14.6 %
	SPDR Financial XLF	11.5 %

Schmolz und Bickenbach	10.2 %
Vontobel	10.4 %
CS	9.3 %
Swiss Life	9.3 %
Swiss Re	9.0 %
Schindler	8.9 %
Lifewatch	8.0 %
Julius Baer	7.2 %
Kudelski	7.0 %
UBS	6.8 %
Logitech	5.1 %
BC Vaud	4.3 %
Romande Energie	2.1 %

Caractéristique / Merkmal outperformance

outperformance

Gestion / Management active with a Behavioral approach

active with a Behavioral approach

**Univers d'investissement /
Anlageuniversum** World with region, country and sector ETF's only
no Derivatives/Options; **no** Investment Vehicles;
no Private Equity **nor any** other Financial product
no commodities

Swiss Performance Index