

The closing prices (Cours de clôture/Tagesschlusskurse) show results gained after taking into account:
 > all costs (trading, transactions, regulations, stock exchanges, taxes)
 > all management fees

Date/Datum	Global (USD)	Benchmark	Cours de clôture/Tagesschlusskurse		Benchmark
	CH0034642923 CT1248933 CORP	MSCI All Country World Index	Swiss (CHF)		Swiss Performance Index
			CH0036308838 CT1248891 CORP		
29.07.2011	556.19	335.90	2081.37		5316.23
28.07.2011	559.73		2101.19		
27.07.2011	559.74		2112.74		
26.07.2011	574.61		2128.68		
25.07.2011	576.08		2149.15		
22.07.2011	578.95		2162.34		
21.07.2011	574.36		2164.05		
20.07.2011	566.83		2146.62		
19.07.2011	567.24		2115.27		
18.07.2011	555.29		2112.33		
15.07.2011	559.28		2173.31		
14.07.2011	550.63		2201.31		
13.07.2011	556.61		2218.36		
12.07.2011	554.47		2190.49		
11.07.2011	557.31		2211.41		
08.07.2011	569.93		2256.28		
07.07.2011	573.30		2279.85		
06.07.2011	565.31		2263.64		
05.07.2011	563.99		2307.29		
04.07.2011	pas de cours/geschlossen		2299.95		
01.07.2011	561.59		2297.61		
30.06.2011	553.86	341.82	2273.73		5684.50
31.12.2010	550.55	330.64	2250.31		5790.62

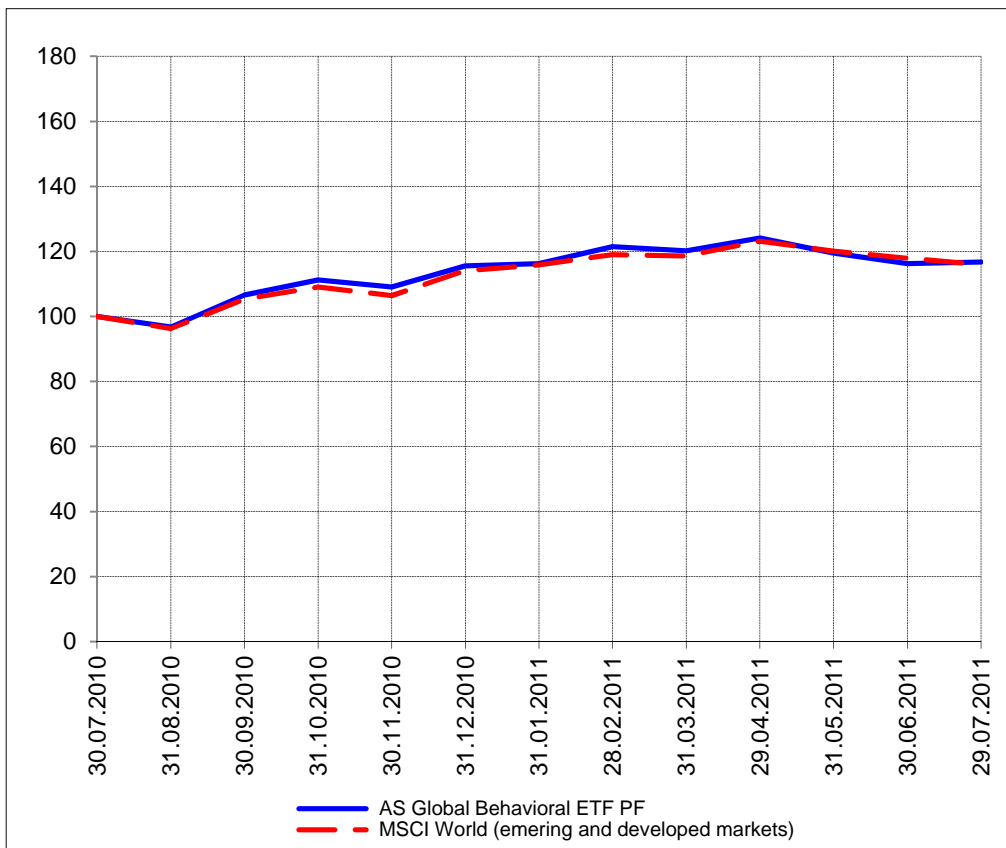
Portrait du Portefeuille Global / Global Portfolio im Überblick



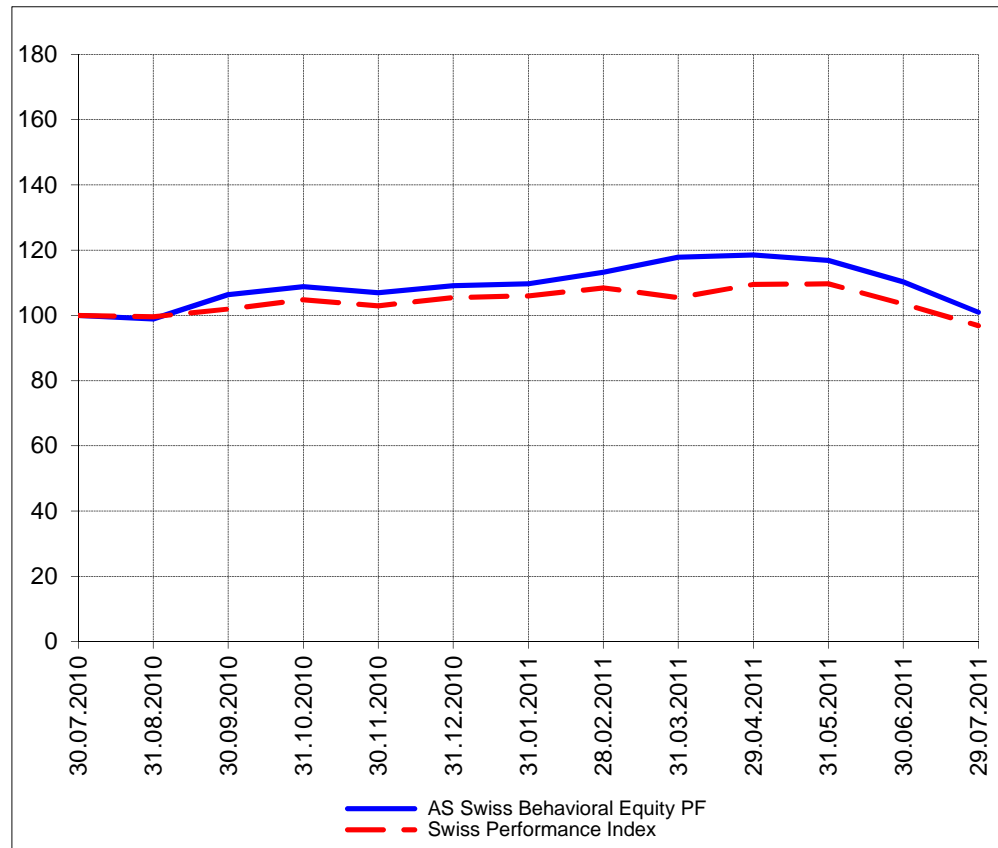
Portrait du Portefeuille Swiss / Swiss Portfolio im Überblick



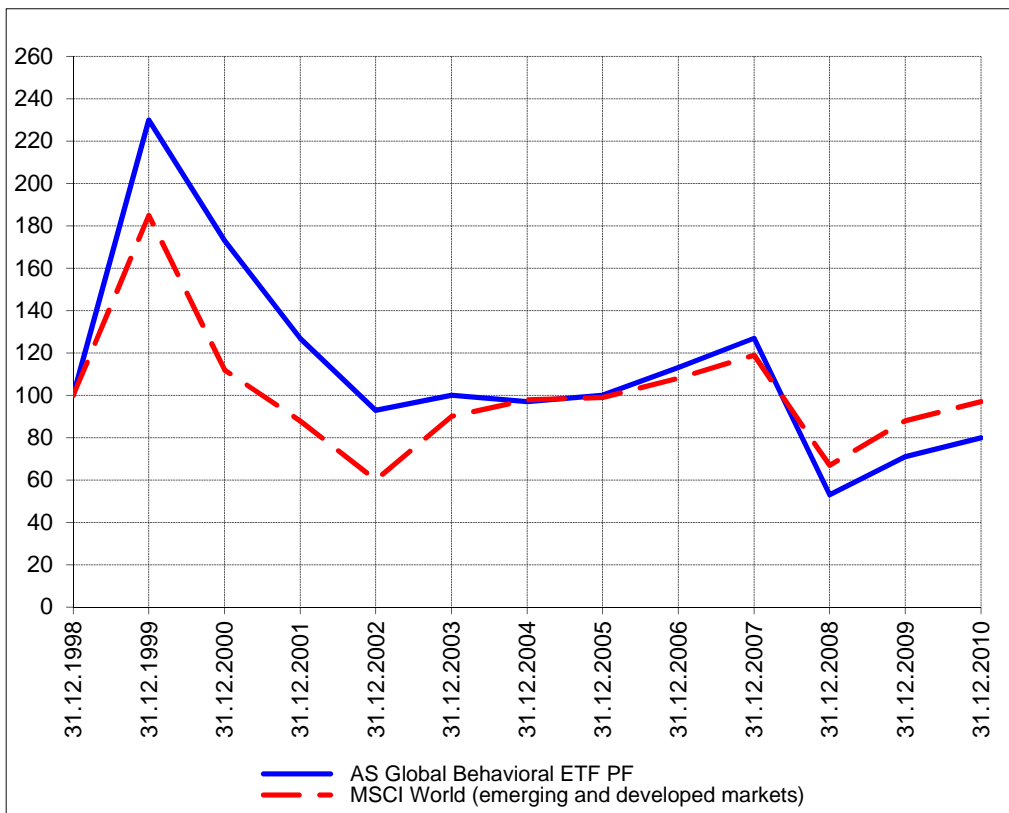
Perf. 12 derniers mois, indexée / Perf. 12 letzten Monaten, indexiert



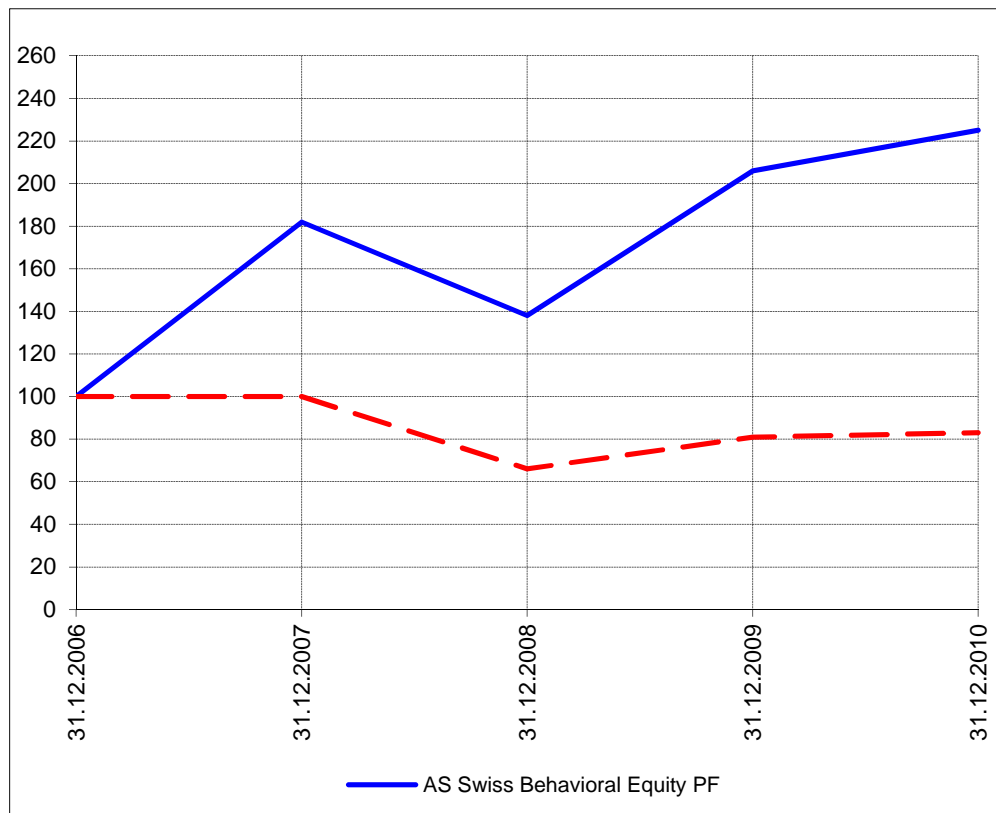
Perf. 12 derniers mois, indexée / Perf. 12 letzten Monaten, indexiert



Perf. depuis création / Perf. seit Lancierung: Global 01. 01. 1999



Perf. depuis création / Perf. seit Lancierung: Swiss 01. 01. 2007



Positions / Positionen différées de 3 mois / um 3 Monate verzögert	ProShares NASDAQ Index QLD	26.3%
	Rydex S&P 500 RSU	17.0%
	SPDR Energy XLE	12.0%
	ProShares Real Estate URE	9.1%
	iShares Oil Equipment IEZ	4.9%
	iShares Oil/Gas Exploration IEO	2.4%

Meyer Burger	12.2%
Bucher	10.3%
Sulzer	10.3%
Forbo	10.1%
Walter Meyer	9.9%
Bossard	9.8%
Metall ZG	5.1%
Lem	4.9%
Vaudoise	4.8%
SPS	4.6%
Aryzta	4.4%
AFG	4.3%
Burckhardt	4.0%
Burkhalter	3.1%

Caractéristique / Merkmal outperformance

outperformance

Gestion / Management active with a Behavioral approach

active with a Behavioral approach

**Univers d'investissement /
Anlageuniversum** World with region, country and sector ETF's only
no Derivatives/Options; **no** Investment Vehicles;
no Private Equity **nor any** other Financial product
no commodities

Swiss Performance Index
no Derivatives/Options; **no** Investment Vehicles;
no Private Equity **nor any** other Financial product
no commodities