

The closing prices (Cours de clôture/Tagesschlusskurse) show results gained after taking into account:
 > all costs (trading, transactions, regulations, stock exchanges, taxes)
 > all management fees

Date/Datum	<u>Sentiment-Exposure-Index</u> (approx.)		<u>GLOBAL</u>		<u>SWISS</u>	
	Investi / Investiert	Cash	NAV (USD) CH0034642923 CT1248933 CORP	Benchmark MSCI All Country World Index	NAV (CHF) CH0036308838 CT1248891 CORP	Benchmark Swiss Market Index
31.07.2013			664.20	372.49	2613.71	7820.43
30.07.2013			661.02		2606.33	
29.07.2013			658.43		2608.89	
26.07.2013			663.23		2602.37	
25.07.2013			664.17		2624.91	
24.07.2013			661.79		2645.22	
23.07.2013			669.73		2636.17	
22.07.2013			670.98		2648.71	
19.07.2013			669.75		2645.85	
18.07.2013			665.59		2649.02	
17.07.2013			662.22		2646.80	
16.07.2013			659.32		2652.20	
15.07.2013			664.52		2669.02	
12.07.2013			663.25		2663.94	
11.07.2013			659.14		2663.62	
10.07.2013			646.22		2658.45	
09.07.2013			645.78		2660.93	
08.07.2013			639.02		2626.80	
05.07.2013			637.60		2601.67	
04.07.2013			pas de cours/geschlossen		2619.66	
03.07.2013			632.39		2565.58	
02.07.2013			632.26		2583.46	
01.07.2013			632.65		2584.95	
28.06.2013			625.36	355.81	2566.18	7683.04
31.12.2012			576.59	339.75	2264.73	6822.44

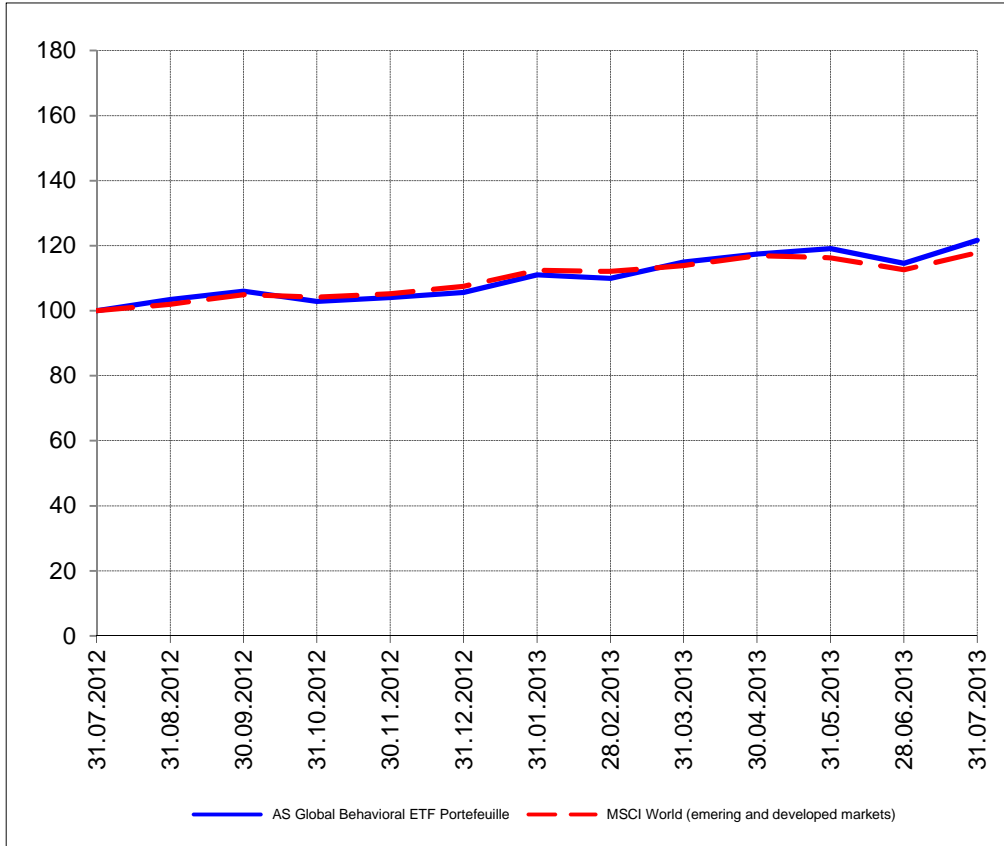
Portrait du Portefeuille Global / Global Portfolio im Überblick

Portrait du Portefeuille Swiss / Swiss Portfolio im Überblick

GLOBAL



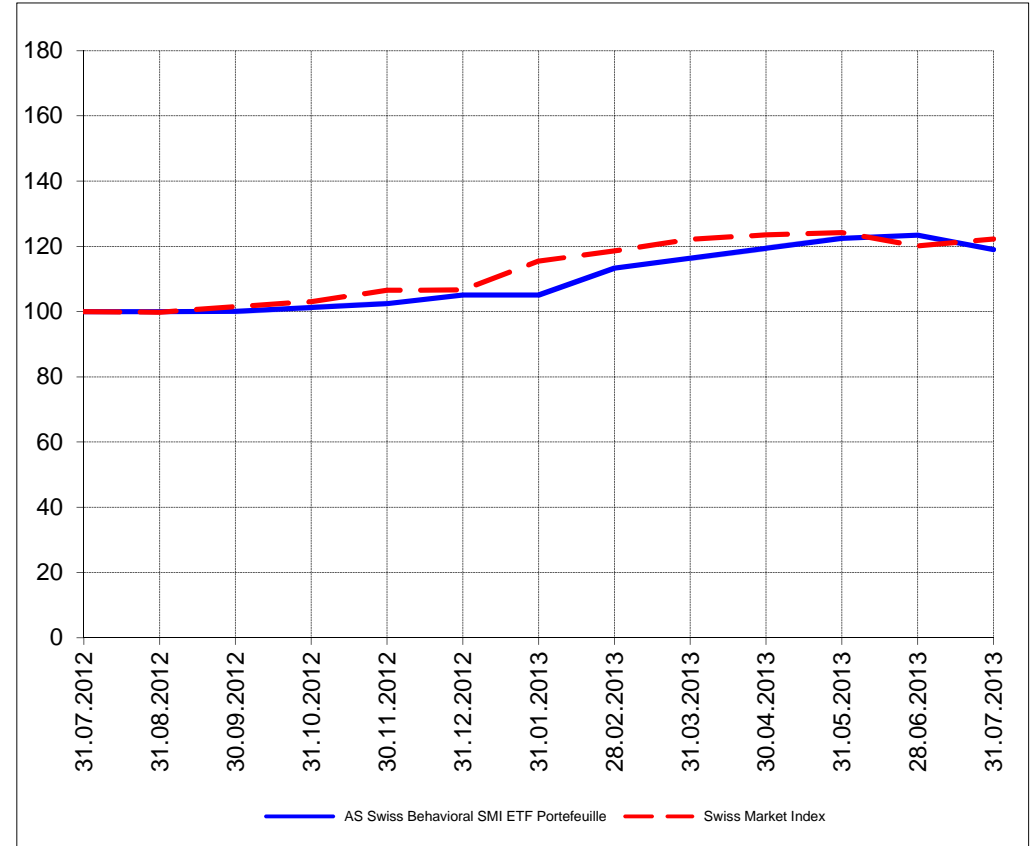
Perf. 12 derniers mois, indexée / Perf. der 12 letzten Monate, indexiert



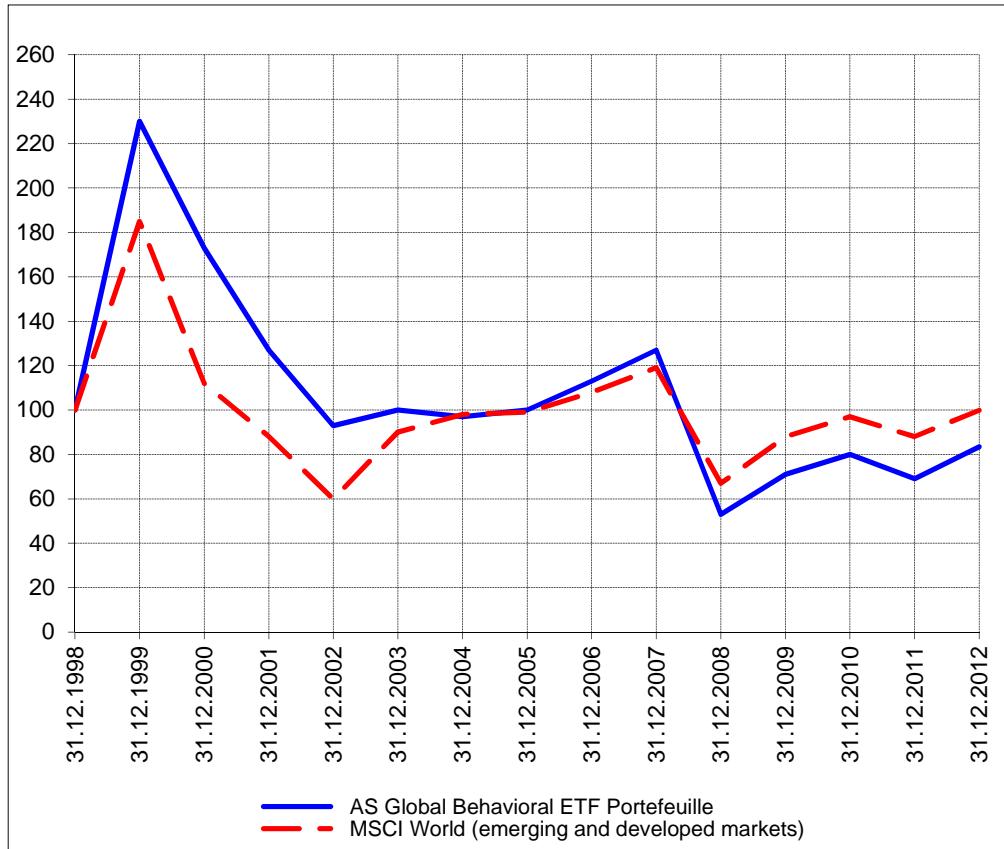
SWISS



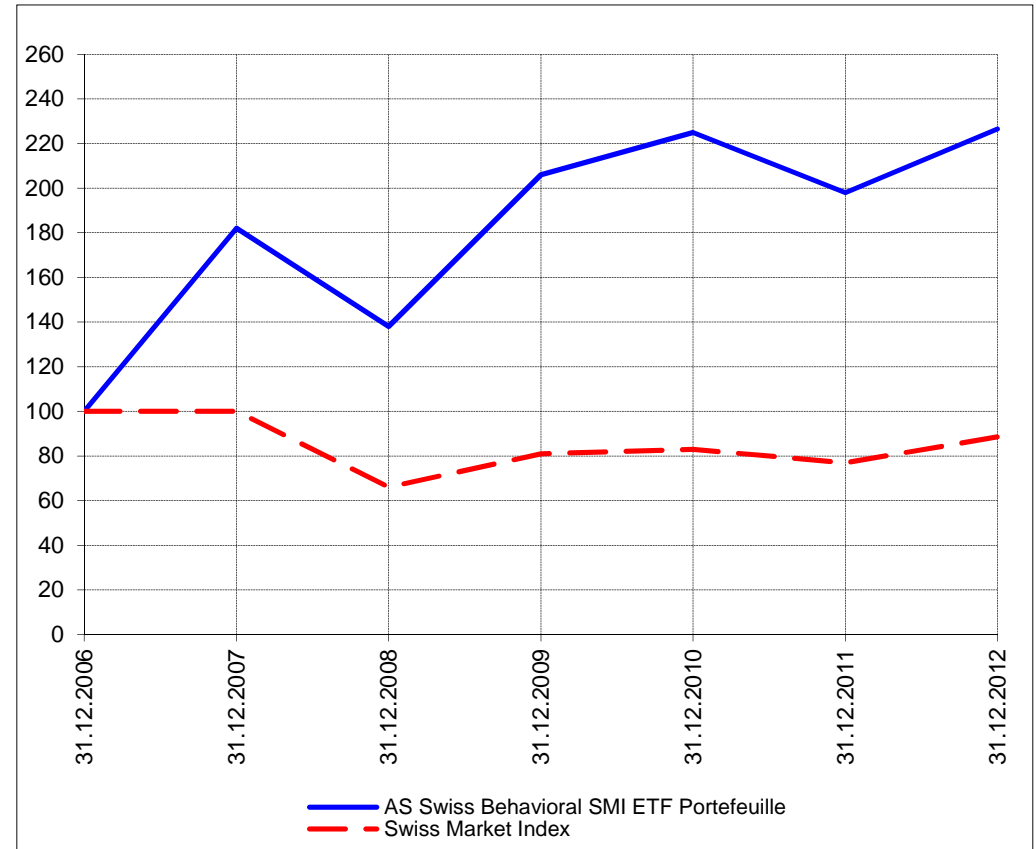
Perf. 12 derniers mois, indexée / Perf. der letzten 12 Monate, indexiert



Perf. depuis création / Perf. seit Lancierung: Global 01. 01. 1999



Perf. depuis création / Perf. seit Lancierung: Swiss 01. 01. 2007



Positions / Positionen différées de 3 mois / um 3 Monate verzögert	SPDR Homebuilders XHB	20.1%
	SPDR Biotech XBI	15.7%
	Vanguard World Stock Index VT	12.8%
	SPDR S&P 500 SPY	10.8%
	iShares MSCI Turkey TUR	7.1%
	Direxion Financial FAS	7.0%
	Direxion Energy ERX	2.3%
	ProShares Real Estate URE	1.4%

Préservation / Werterhalt	Cash	22.8%
---------------------------	------	-------

XMTCH	95.4%
-------	-------

Cash	4.6%
------	------

Caractéristique / Merkmal	1. Préservation / Werterhalt 2. Outperformance
----------------------------------	---

1. Préservation / Werterhalt 2. Outperformance

Gestion / Management	active with a Behavioral approach
-----------------------------	-----------------------------------

active with a Behavioral approach

Univers d'investissement / Anlageuniversum	World with region, country and sector ETF's only no Derivatives/Options; no Investment Vehicles; no Private Equity nor any other Financial product no commodities
---	---

Swiss Performance Index no Derivatives/Options; no Investment Vehicles; no Private Equity nor any other Financial product no commodities
--