

The closing prices (Cours de clôture/Tagesschlusskurse) show results gained after taking into account:
 > all costs (trading, transactions, regulations, stock exchanges, taxes)
 > all management fees

Date/Datum	Cours de clôture/Tagesschlusskurse			
	Global (USD) CH0034642923 CT1248933 CORP	Benchmark MSCI All Country World Index	Swiss (CHF) CH0036308838 CT1248891 CORP	Benchmark Swiss Performance Index
31.08.2010	461.17	279.06	2039.31	5465.25
30.08.2010	457.33		2038.60	
27.08.2010	463.32		2035.40	
26.08.2010	454.32		2028.22	
25.08.2010	455.65		2010.83	
24.08.2010	455.25		2062.06	
23.08.2010	460.15		2102.61	
20.08.2010	463.79		2088.64	
19.08.2010	465.53		2078.98	
18.08.2010	473.01		2085.90	
17.08.2010	473.96		2060.11	
16.08.2010	467.09		2056.18	
13.08.2010	463.47		2061.57	
12.08.2010	462.35		2049.72	
11.08.2010	462.73		2055.29	
10.08.2010	478.78		2074.73	
09.08.2010	485.65		2084.17	
06.08.2010	482.10		2076.46	
05.08.2010	482.42		2092.38	
04.08.2010	485.92		2085.79	
03.08.2010	484.67		2080.37	
02.08.2010	488.60		2082.85	
30.07.2010	476.38	289.75	2061.75	5489.89
31.12.2009	490.28	299.44	2061.68	5626.40

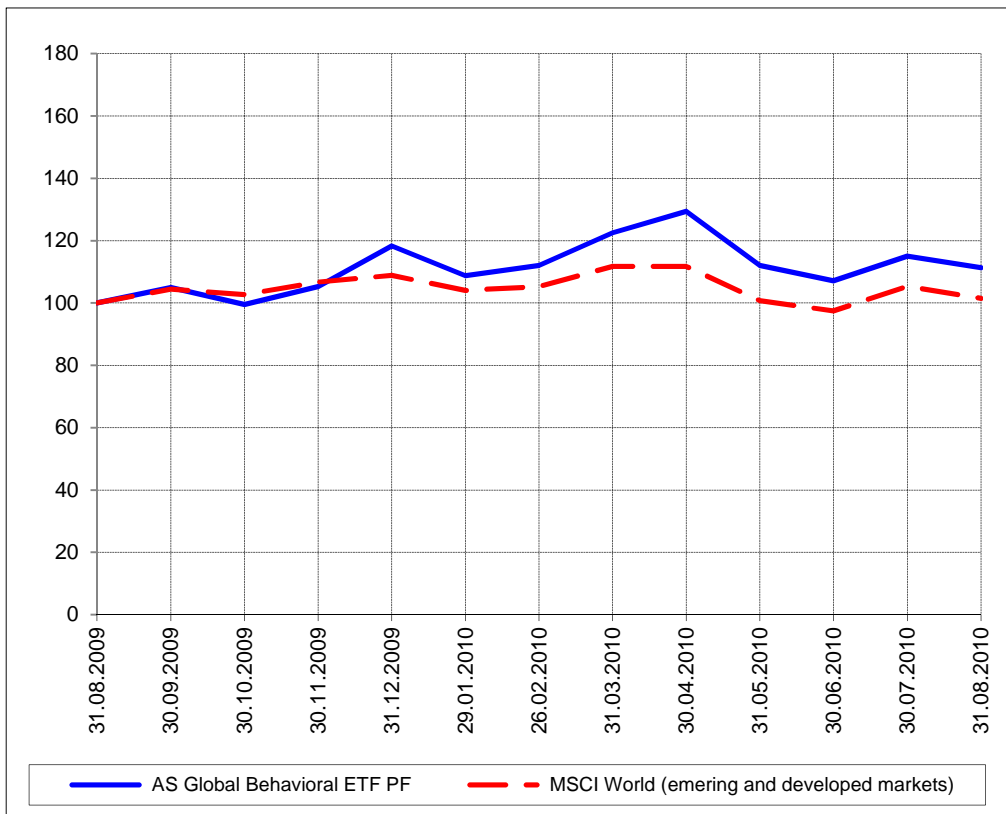
Portrait du Portefeuille Global / Global Portfolio im Überblick



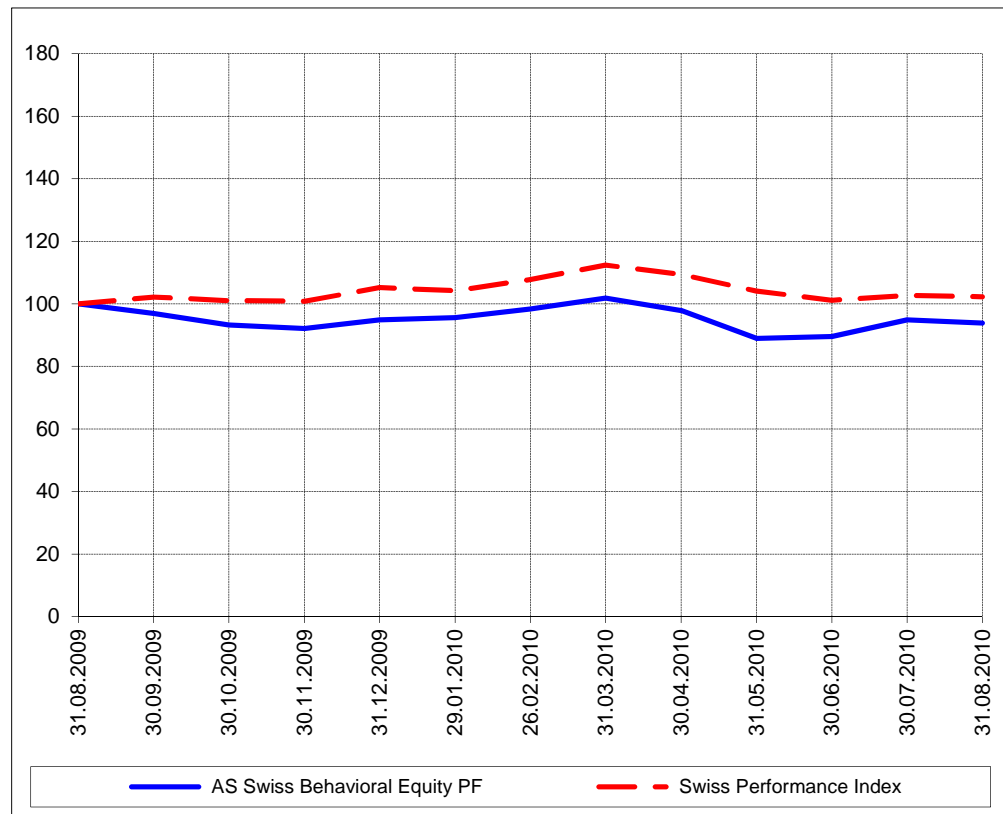
Portrait du Portefeuille Swiss / Swiss Portfolio im Überblick



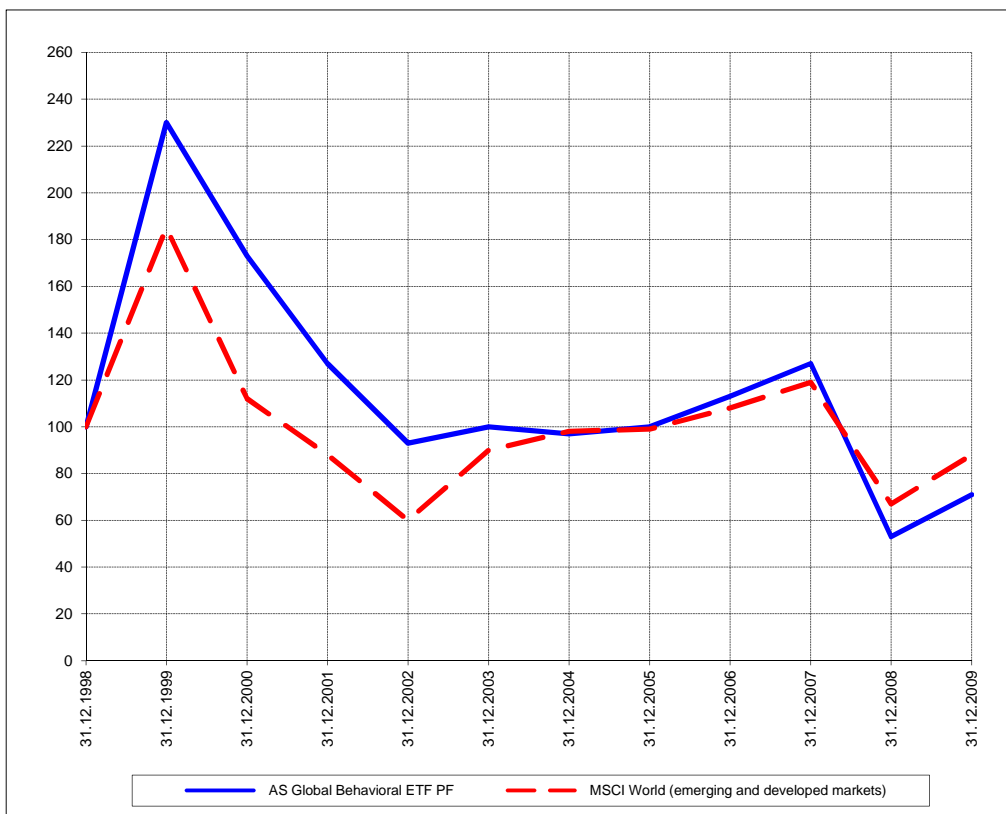
Perf. 12 derniers mois, indexée / Perf. 12 letzten Monaten, indexiert



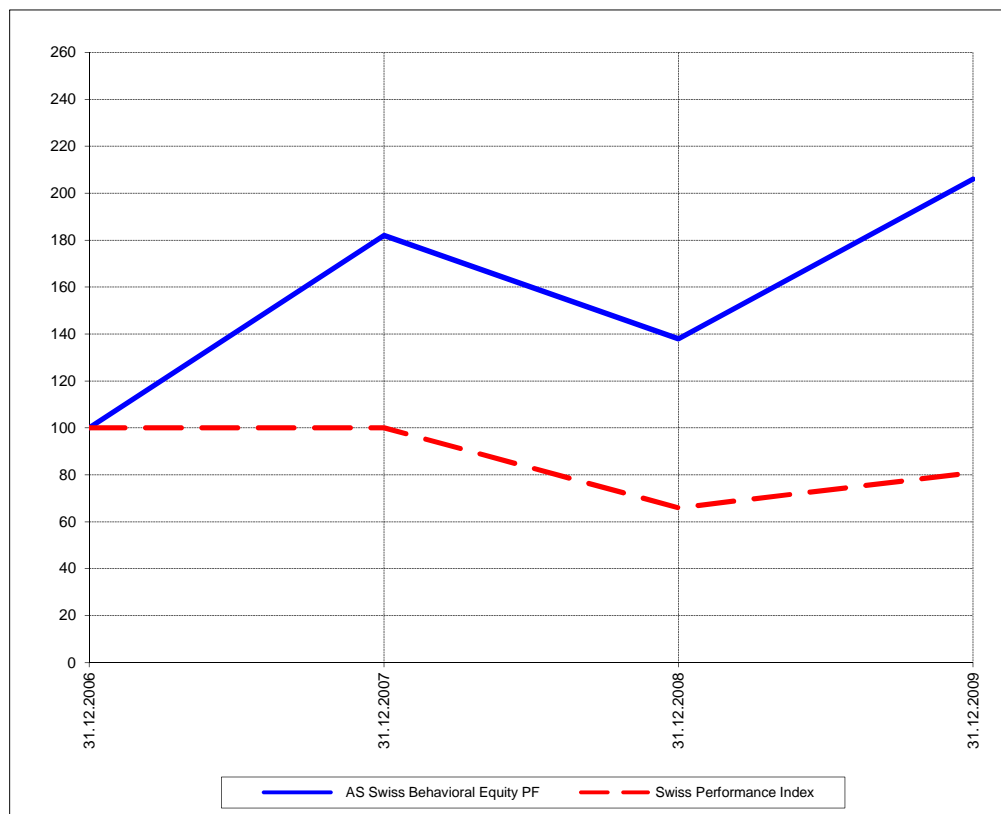
Perf. 12 derniers mois, indexée / Perf. 12 letzten Monaten, indexiert



Perf. depuis création / Perf. seit Lancierung: Global 01. 01. 1999



Perf. depuis création / Perf. seit Lancierung: Swiss 01. 01. 2007



Positions / Positionen différées de 3 mois / um 3 Monate verzögert	SPDR S&P 500 SPY	63.3%
	SPDR DJ Wilshire REIT RWR	15.2%
	SPDR S&P Homebuilders XHB	9.9%
	iShares MSCI Turkey TUR	9.7%

Schindler	12.3%
Uster Technology	10.9%
Walter Meyer	10.8%
VZ	10.4%
Kudelski	9.9%
Richemont	9.9%
Ems	8.2%
Ublox	5.5%
Burkhalter	3.8%
Flughafen Zürich	2.9%

Caractéristique / Merkmal outperformance

outperformance

Gestion / Management active with a Behavioral approach

active with a Behavioral approach

**Univers d'investissement /
Anlageuniversum** World with region, country and sector ETF's only
no Derivatives/Options; **no** Investment Vehicles;
no Private Equity **nor any** other Financial product
no commodities

Swiss Performance Index
no Derivatives/Options; **no** Investment Vehicles;
no Private Equity **nor any** other Financial product
no commodities