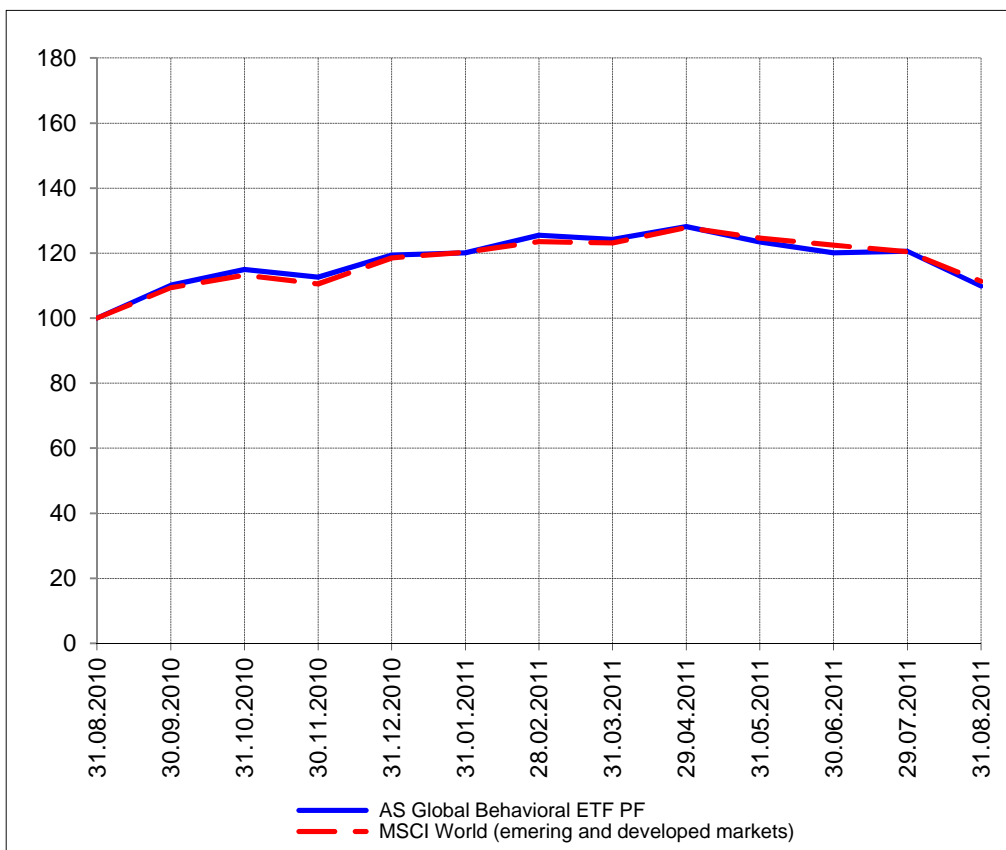


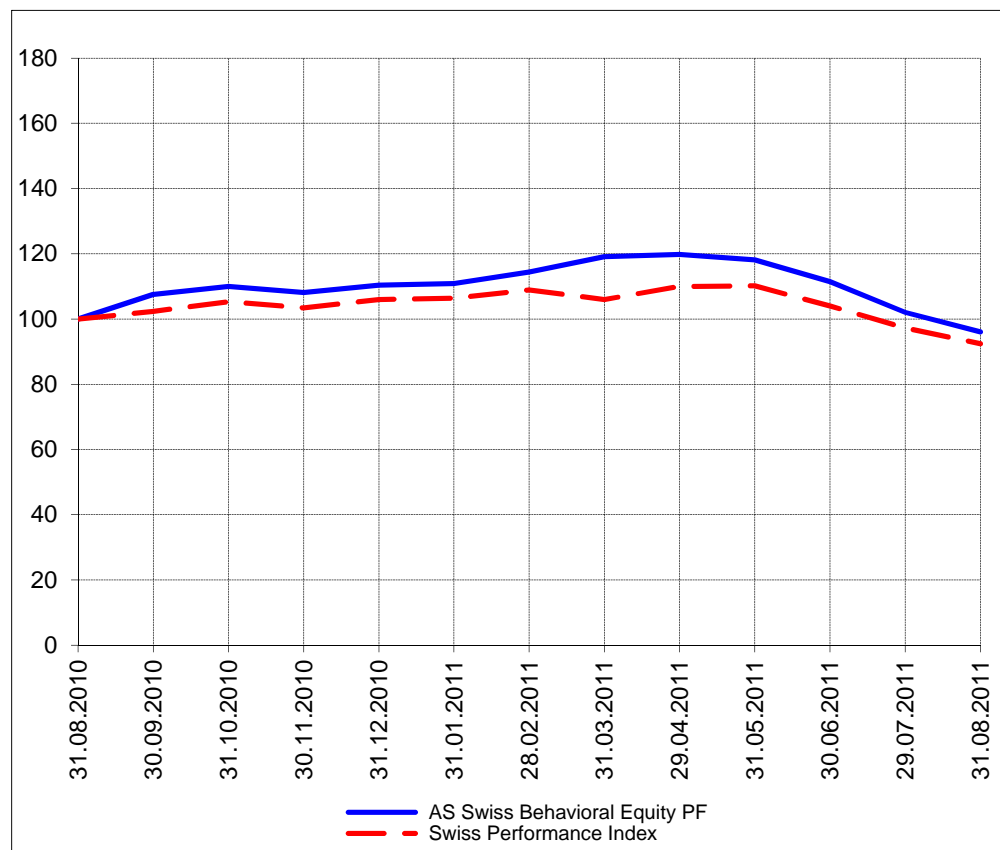
The closing prices (Cours de clôture/Tagesschlusskurse) show results gained after taking into account:
 > all costs (trading, transactions, regulations, stock exchanges, taxes)
 > all management fees

Date/Datum	Global (USD)	Benchmark	Cours de clôture/Tagesschlusskurse		Benchmark
	CH0034642923 CT1248933 CORP	MSCI All Country World Index	Swiss (CHF)		Swiss Performance Index
			CH0036308838 CT1248891 CORP		
31.08.2011	506.73	310.62	1958.68		5049.37
30.08.2011	504.53		1939.26		
29.08.2011	501.45		1938.96		
26.08.2011	487.22		1905.86		
25.08.2011	477.76		1897.83		
24.08.2011	486.84		1910.22		
23.08.2011	482.57		1881.63		
22.08.2011	464.54		1856.97		
19.08.2011	465.57		1842.86		
18.08.2011	475.12		1861.64		
17.08.2011	500.71		1929.17		
16.08.2011	500.85		1909.97		
15.08.2011	506.99		1903.77		
12.08.2011	496.42		1894.82		
11.08.2011	492.84		1831.65		
10.08.2011	473.90		1778.65		
09.08.2011	491.12		1828.72		
08.08.2011	471.00		1799.81		
05.08.2011	503.90		1873.19		
04.08.2011	507.29		1918.15		
03.08.2011	537.31		1966.05		
02.08.2011	537.29		1994.87		
01.08.2011	553.16				
29.07.2011	556.19	335.90	pas de cours/geschlossen		5316.23
31.12.2010	550.55	330.64	2250.31		5790.62

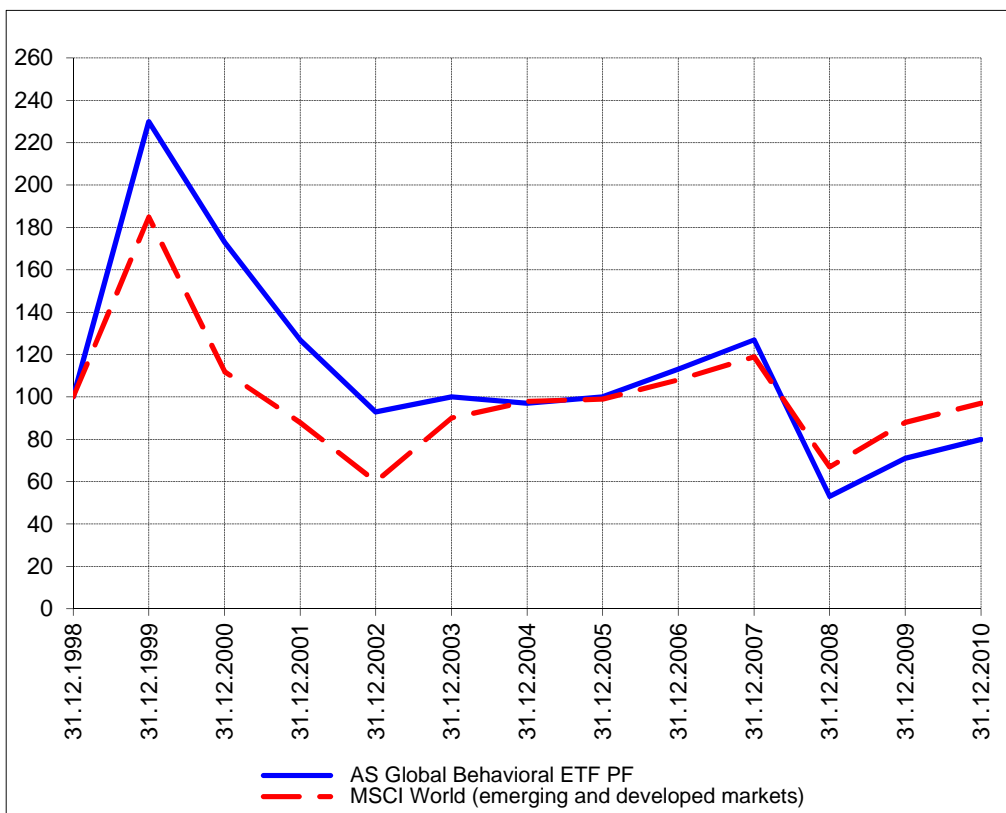
Perf. 12 derniers mois, indexée / Perf. 12 letzten Monaten, indexiert



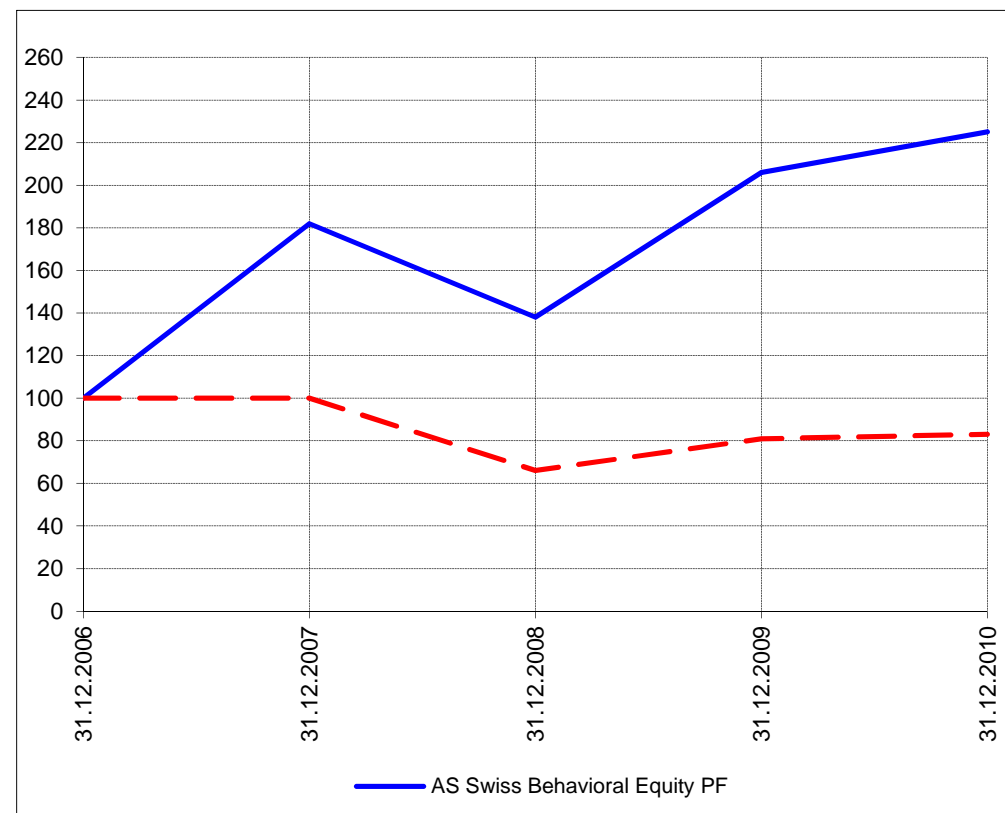
Perf. 12 derniers mois, indexée / Perf. 12 letzten Monaten, indexiert



Perf. depuis création / Perf. seit Lancierung: Global 01. 01. 1999



Perf. depuis création / Perf. seit Lancierung: Swiss 01. 01. 2007



Positions / Positionen différées de 3 mois / um 3 Monate verzögert	ProShares NASDAQ Index QLD	26.4%
	SPDR Energy XLE	16.0%
	Rydex S&P 500 RSU	14.9%
	iShares Oil Equipment IEZ	7.8%
	ProShares Real Estate URE	3.9%

Bossard	10.7%
Forbo	10.3%
Burkhalter	10.2%
Metall ZG	9.9%
Bucher	9.8%
Sulzer	9.1%
Walter Meyer	8.8%
Aryzta	8.0%
Lem	7.5%
Meyer Burger	4.7%
PSP	2.7%
SPS	2.4%

Caractéristique / Merkmal outperformance

outperformance

Gestion / Management active with a Behavioral approach

active with a Behavioral approach

**Univers d'investissement /
Anlageuniversum** World with region, country and sector ETF's only
no Derivatives/Options; **no** Investment Vehicles;
no Private Equity **nor any** other Financial product
no commodities

Swiss Performance Index
no Derivatives/Options; **no** Investment Vehicles;
no Private Equity **nor any** other Financial product
no commodities