





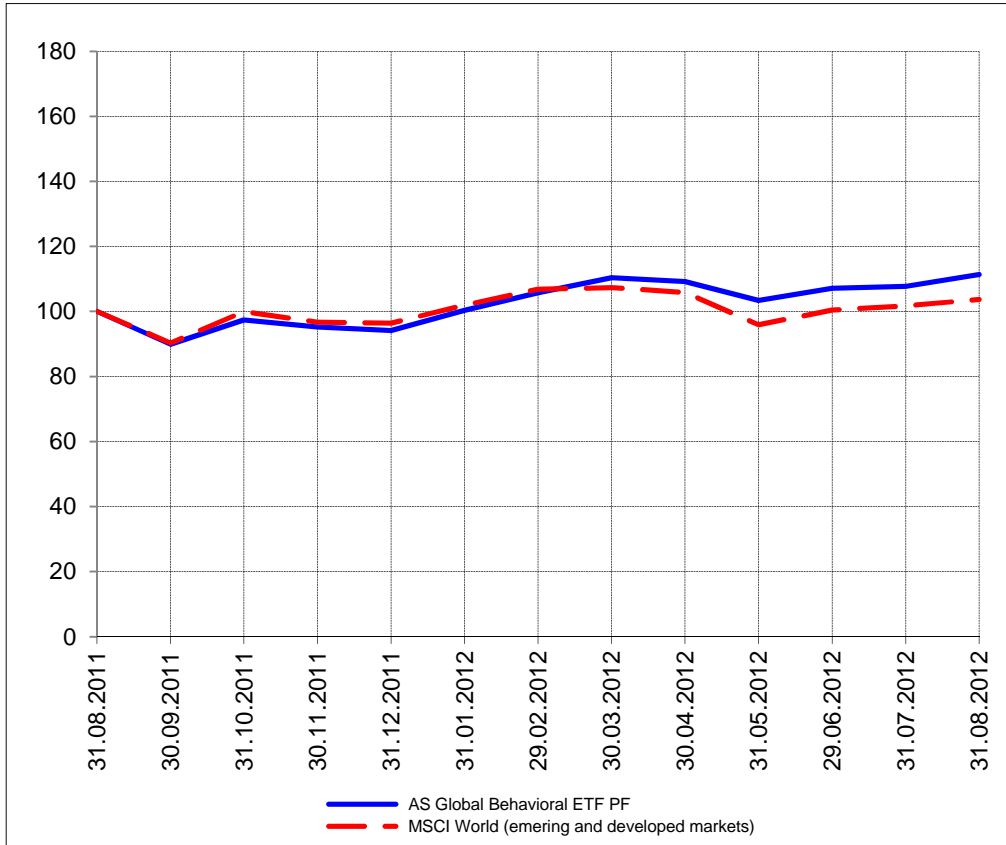


The closing prices (Cours de clôture/Tagesschlusskurse) show results gained after taking into account:
 > all costs (trading, transactions, regulations, stock exchanges, taxes)
 > all management fees

Date/Datum	<u>Sentiment-Exposure-Index</u> (approx.)		<u>GLOBAL</u>		<u>SWISS</u>	
	Investi / Investiert	Cash	NAV (USD) CH0034642923 CT1248933 CORP	Benchmark MSCI All Country World Index	NAV (CHF) CH0036308838 CT1248891 CORP	Benchmark Swiss Market Index
31.08.2012			564.53	322.14	2157.28	6388.01
30.08.2012			561.44		2146.08	
29.08.2012			565.49		2159.21	
28.08.2012			564.56		2161.31	
27.08.2012			563.95		2181.38	
24.08.2012			563.33		2178.08	
23.08.2012			559.52		2166.70	
22.08.2012			562.64		2176.58	
21.08.2012			559.69		2190.37	
20.08.2012			560.81		2184.97	
17.08.2012			562.28		2193.36	
16.08.2012			559.79		2191.56	
15.08.2012			555.47		2191.67	
14.08.2012			552.97		2186.01	
13.08.2012			551.62		2171.46	
10.08.2012			550.68		2179.73	
09.08.2012			551.68		2186.77	
08.08.2012			550.49		2170.48	
07.08.2012			551.57		2172.43	
06.08.2012			548.30		2173.78	
03.08.2012			546.47		2171.68	
02.08.2012			538.41		2154.29	
01.08.2012			541.24		pas de cours/geschlossen	
31.07.2012			545.77	316.02	2156.20	6399.27
30.12.2011			477.20	299.51	1979.61	5936.23

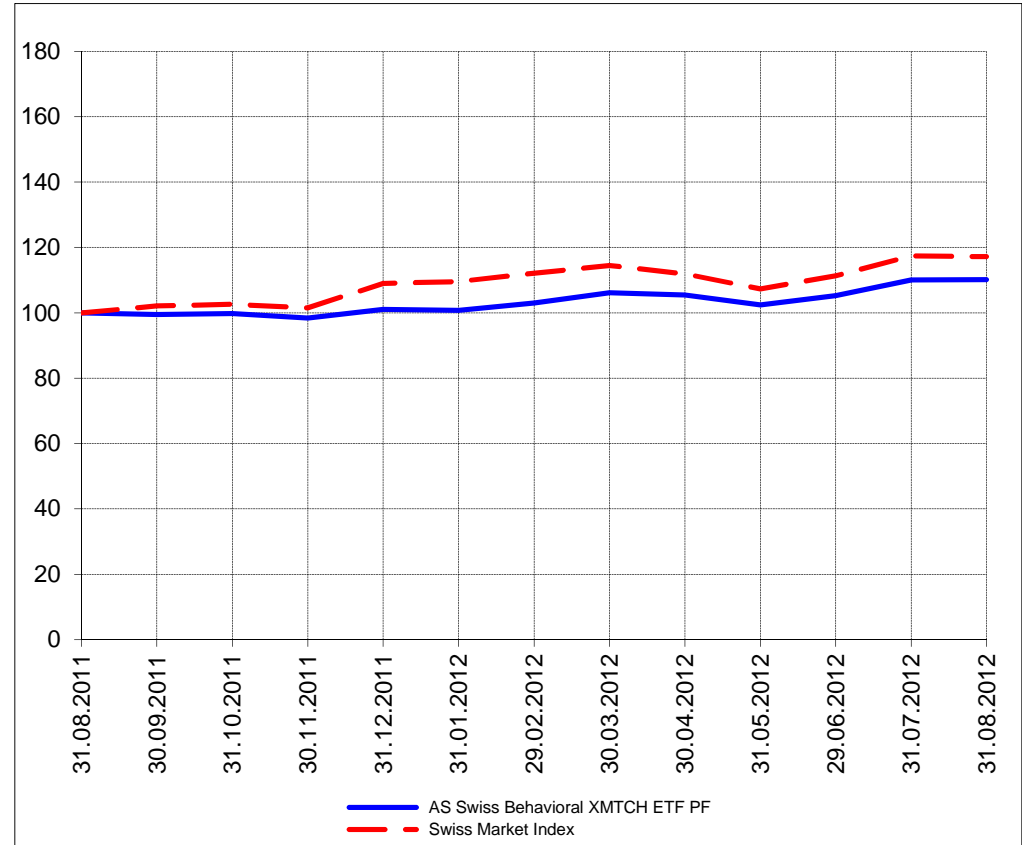
GLOBAL

Perf. 12 derniers mois, indexée / Perf. der 12 letzten Monate, indexiert

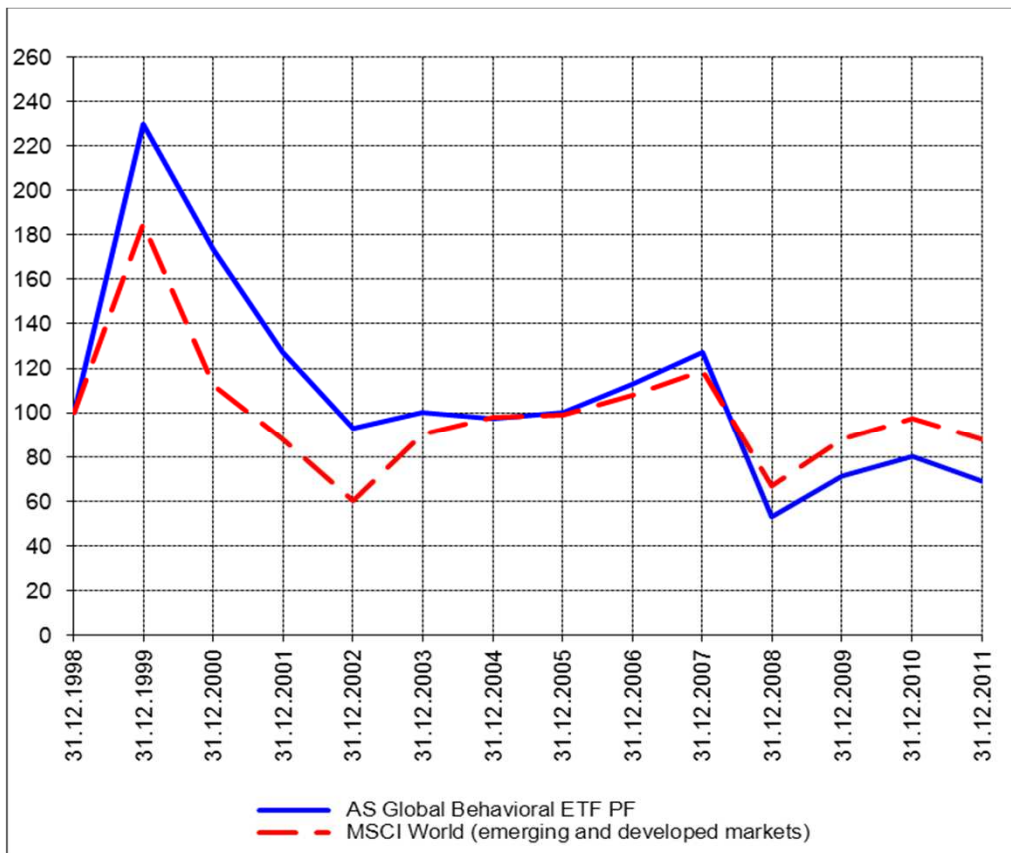


SWISS

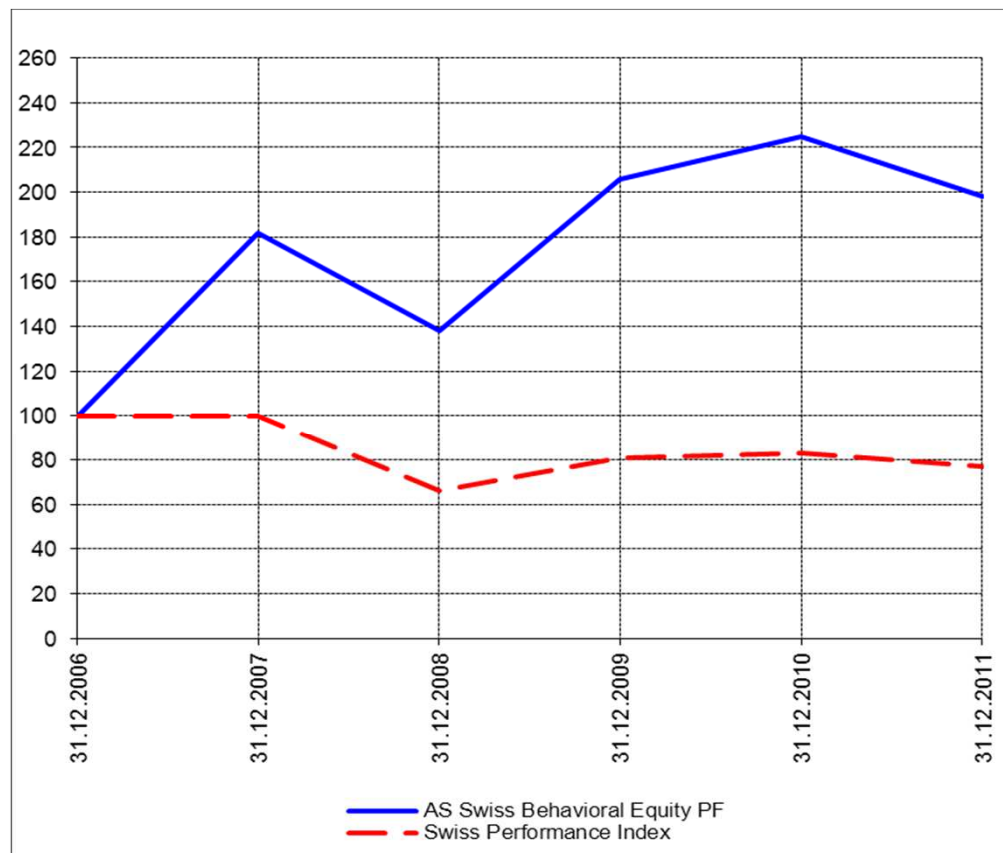
Perf. 12 derniers mois, indexée / Perf. der letzten 12 Monate, indexiert



Perf. depuis création / Perf. seit Lancierung: Global 01. 01. 1999



Perf. depuis création / Perf. seit Lancierung: Swiss 01. 01. 2007



Positions / Positionen

différées de 3 mois /
um 3 Monate verzögert

SPDR Homebuilders XHB	22.5%
ProShares NASDAQ Index QLD	18.3%
PowerShares QQQ	11.8%
SPDR DJ Wilshire REIT RWR	2.2%
iShares US Regionals Banks IAT	2.2%

XMTCH

90.8%

Caractéristique / Merkmal

1. Préservation / Werterhalt
2. Outperformance

1. Préservation / Werterhalt
2. Outperformance

Gestion / Management

active with a Behavioral approach

active with a Behavioral approach

**Univers d'investissement /
Anlageuniversum**

World with region, country and sector ETF's only
no Derivatives/Options; **no** Investment Vehicles;
no Private Equity **nor any** other Financial product
no commodities

Swiss Performance Index
no Derivatives/Options; **no** Investment Vehicles;
no Private Equity **nor any** other Financial product
no commodities