

The closing prices (Cours de clôture/Tagesschlusskurse) show results gained after taking into account:  
 > all costs (trading, transactions, regulations, stock exchanges, taxes)  
 > all management fees

Date/Datum	<u>Sentiment-Exposure-Index</u> (approx.)		<u>GLOBAL</u>		<u>SWISS</u>	
	Investi / Investiert	Cash	NAV (USD) CH0034642923 CT1248933 CORP	Benchmark MSCI All Country World Index	NAV (CHF) CH0036308838 CT1248891 CORP	Benchmark Swiss Market Index
30.08.2013			641.44	363.98	2594.55	7745.97
29.08.2013			644.98		2596.66	
28.08.2013			643.68		2597.55	
27.08.2013			639.41		2634.65	
26.08.2013			652.64		2681.22	
23.08.2013			651.86		2673.01	
22.08.2013			650.55		2667.01	
21.08.2013			643.96		2633.23	
20.08.2013			645.03		2650.84	
19.08.2013			639.56		2649.56	
16.08.2013			645.14		2655.97	
15.08.2013			647.58		2660.14	
14.08.2013			657.82		2698.96	
13.08.2013			659.96		2683.22	
12.08.2013			658.92		2669.75	
09.08.2013			660.94		2661.32	
08.08.2013			662.42		2654.83	
07.08.2013			661.59		2663.59	
06.08.2013			665.82		2679.49	
05.08.2013			673.94		2660.02	
02.08.2013			674.85		2657.42	
01.08.2013			673.55		pas de cours/geschlossen	
31.07.2013			664.20	372.49	2613.71	7820.43
<b>31.12.2012</b>			<b>576.59</b>	<b>339.75</b>	<b>2264.73</b>	<b>6822.44</b>

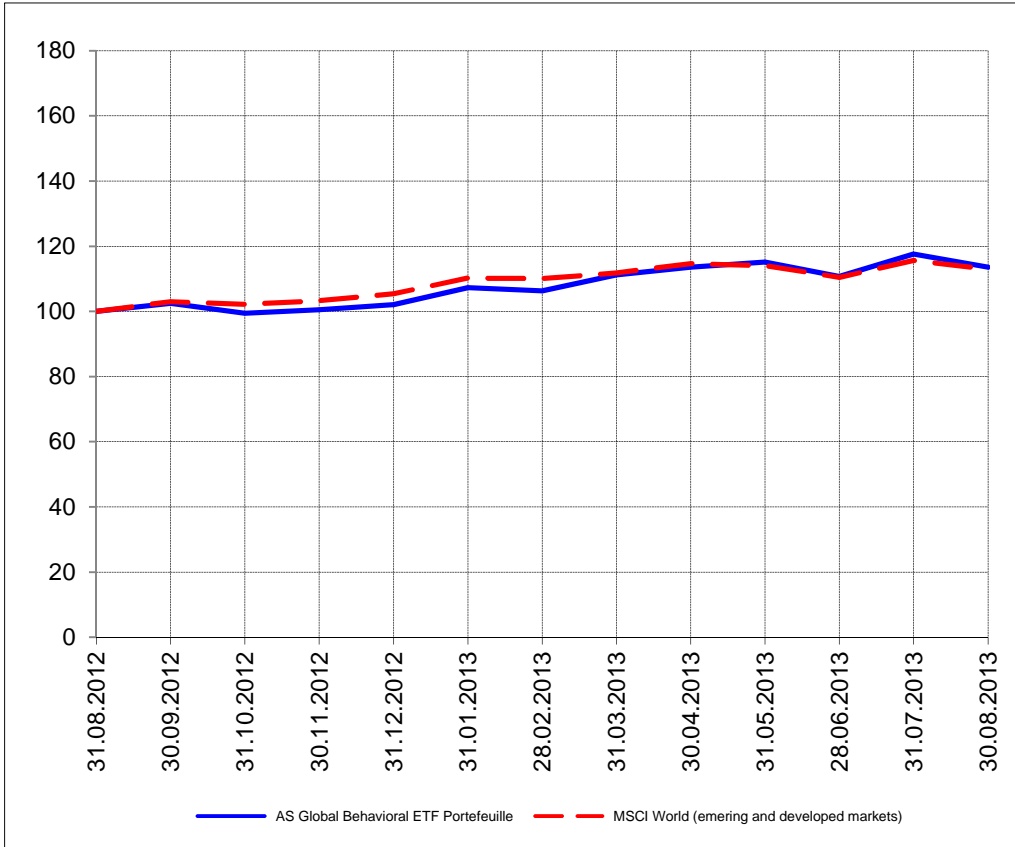
Portrait du Portefeuille Global / Global Portfolio im Überblick

Portrait du Portefeuille Swiss / Swiss Portfolio im Überblick

**GLOBAL**



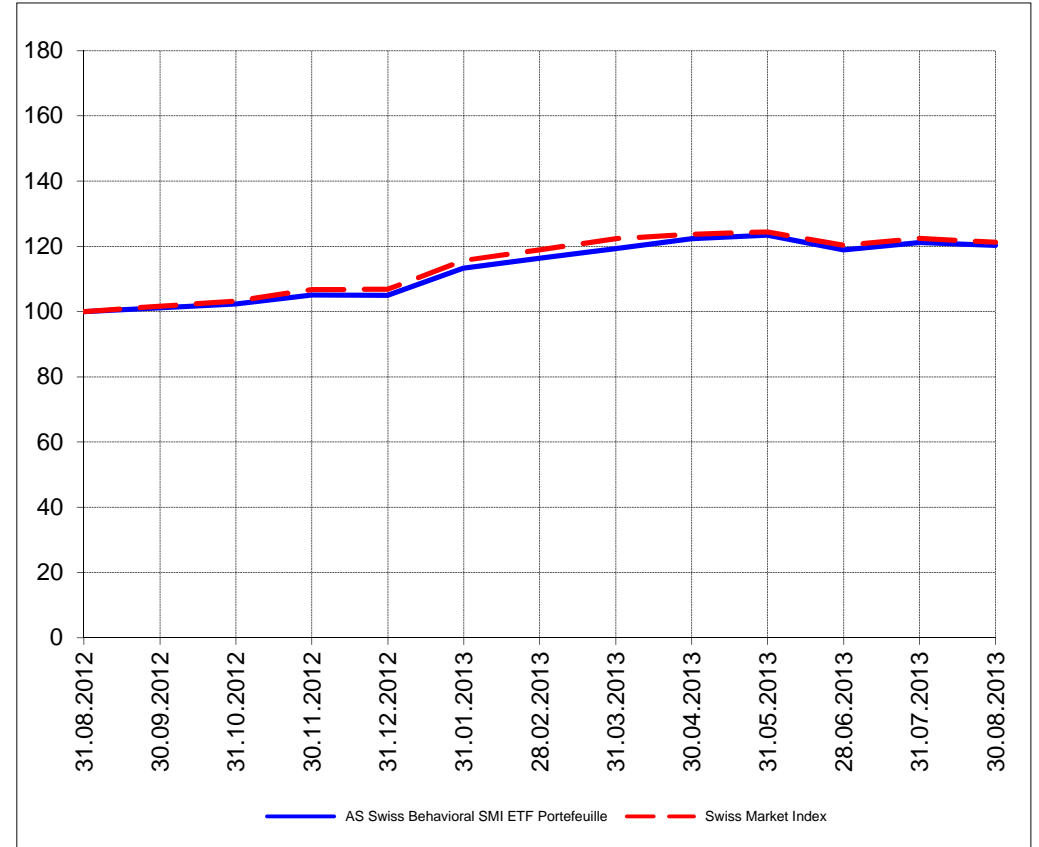
Perf. 12 derniers mois, indexée / Perf. der 12 letzten Monate, indexiert



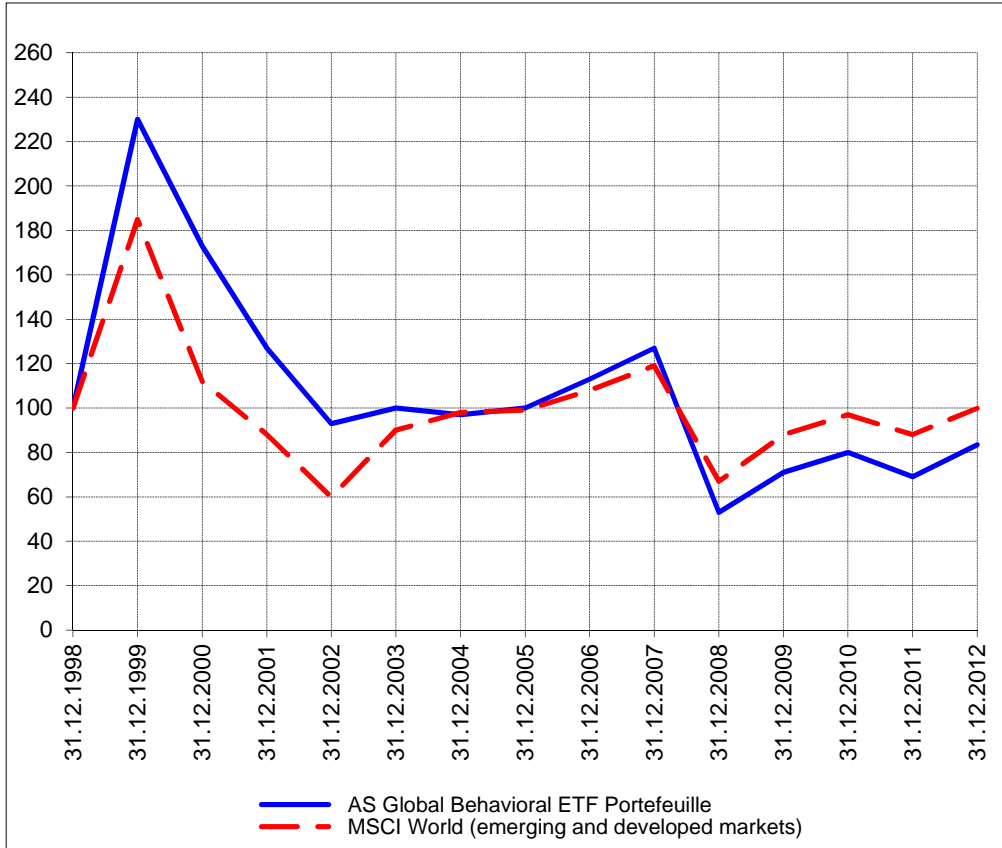
**SWISS**



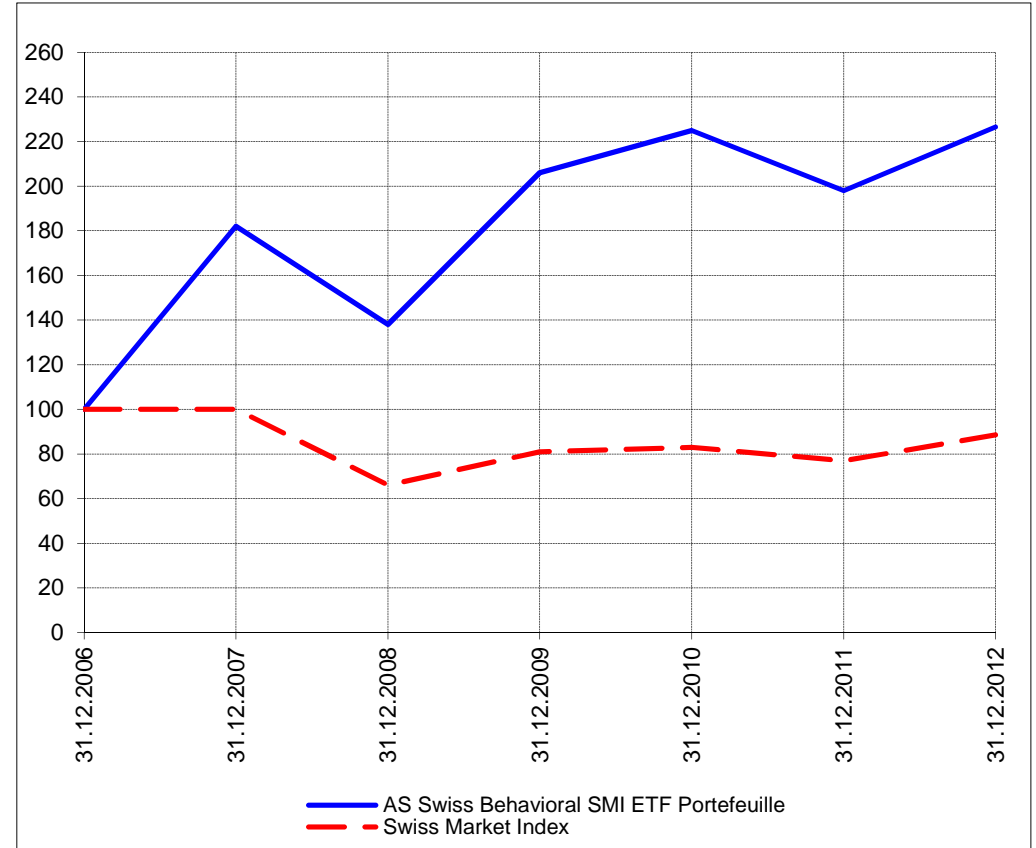
Perf. 12 derniers mois, indexée / Perf. der letzten 12 Monate, indexiert



Perf. depuis création / Perf. seit Lancierung: Global 01. 01. 1999



Perf. depuis création / Perf. seit Lancierung: Swiss 01. 01. 2007



<b>Positions / Positionen</b> différées de 3 mois / um 3 Monate verzögert	SPDR Homebuilders XHB	19.8%
	SPDR Biotech XBI	16.5%
	SPDR S&P 500 SPY	11.1%
	Direxion Financial FAS	7.8%
	Vanguard World Stock Index VT	3.1%
	ProShares Real Estate URE	3.0%
	Direxion Energy ERX	2.4%
	Direxion Develop. markets DZK	0.9%
Préservation / Werterhalt	Cash	35.4%

XMTCH	100.0%
Cash	0.0%

**Caractéristique / Merkmal**

1. Préservation / Werterhalt  
2. Outperformance

1. Préservation / Werterhalt  
2. Outperformance

**Gestion / Management** active with a Behavioral approach

active with a Behavioral approach

**Univers d'investissement /  
Anlageuniversum**

World with region, country and sector ETF's only  
**no** Derivatives/Options; **no** Investment Vehicles;  
**no** Private Equity **nor any** other Financial product  
**no** commodities

Swiss Performance Index  
**no** Derivatives/Options; **no** Investment Vehicles;  
**no** Private Equity **nor any** other Financial product  
**no** commodities