

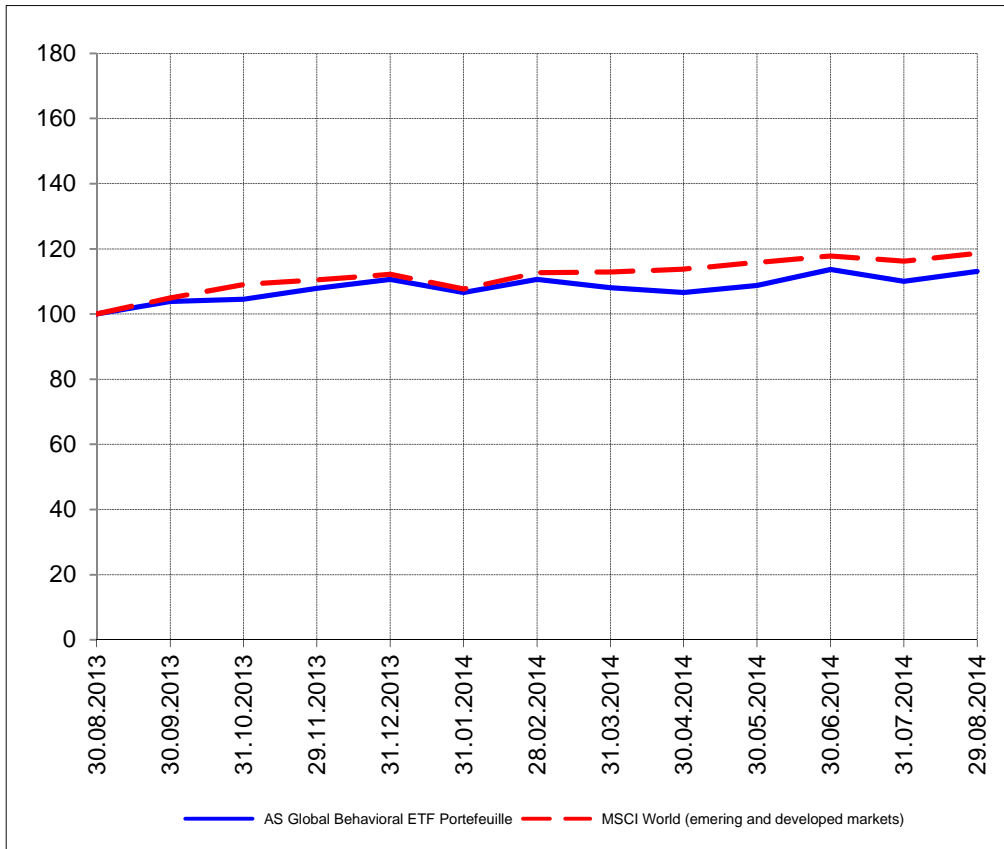
The closing prices (Cours de clôture/Tagesschlusskurse) show results gained after taking into account:  
 > all costs (trading, transactions, regulations, stock exchanges, taxes)  
 > all management fees

Date/Datum	<u>Sentiment-Exposure-Index</u> (approx.)		<u>GLOBAL</u>		<u>SWISS</u>	
	Investi / Investiert	Cash	NAV (USD) CH0034642923 CT1248933 CORP	Benchmark MSCI All Country World Index	NAV (CHF) CH0036308838 CT1248891 CORP	Benchmark Swiss Market Index
29.08.2014			725.24	431.54	2915.80	8658.97
28.08.2014			722.38		2910.13	
27.08.2014			723.57		2922.54	
26.08.2014			724.14		2927.99	
25.08.2014			722.64		2909.40	
22.08.2014			719.05		2890.13	
21.08.2014			720.32		2897.24	
20.08.2014			719.65		2883.74	
19.08.2014			717.56		2880.41	
18.08.2014			714.34		2858.79	
15.08.2014			710.46		2838.48	
14.08.2014			708.01		2850.67	
13.08.2014			708.61		2839.64	
12.08.2014			704.54		2821.94	
11.08.2014			706.91		2822.23	
08.08.2014			704.76		2803.38	
07.08.2014			696.77		2812.78	
06.08.2014			701.02		2809.55	
05.08.2014			700.40		2827.33	
04.08.2014			709.96		2815.48	
01.08.2014			702.91		pas de cours/geschlossen	
31.07.2014			705.83	423.04	2849.29	8410.27
<b>31.12.2013</b>			<b>709.76</b>	<b>408.55</b>	<b>2724.70</b>	<b>8202.98</b>

## Portrait du Portefeuille Global / Global Portfolio im Überblick

GLOBAL

Perf. 12 derniers mois, indexée / Perf. der 12 letzten Monate, indexiert

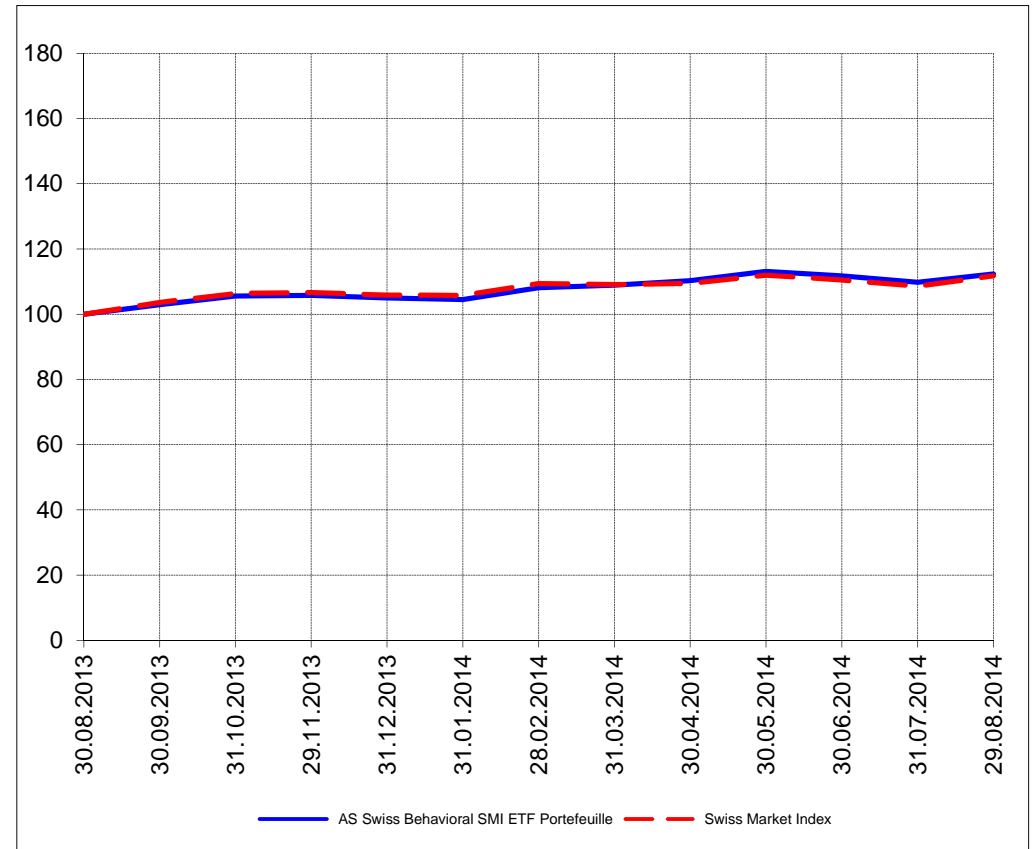


## Portrait du Portefeuille Swiss / Swiss Portfolio im Überblick

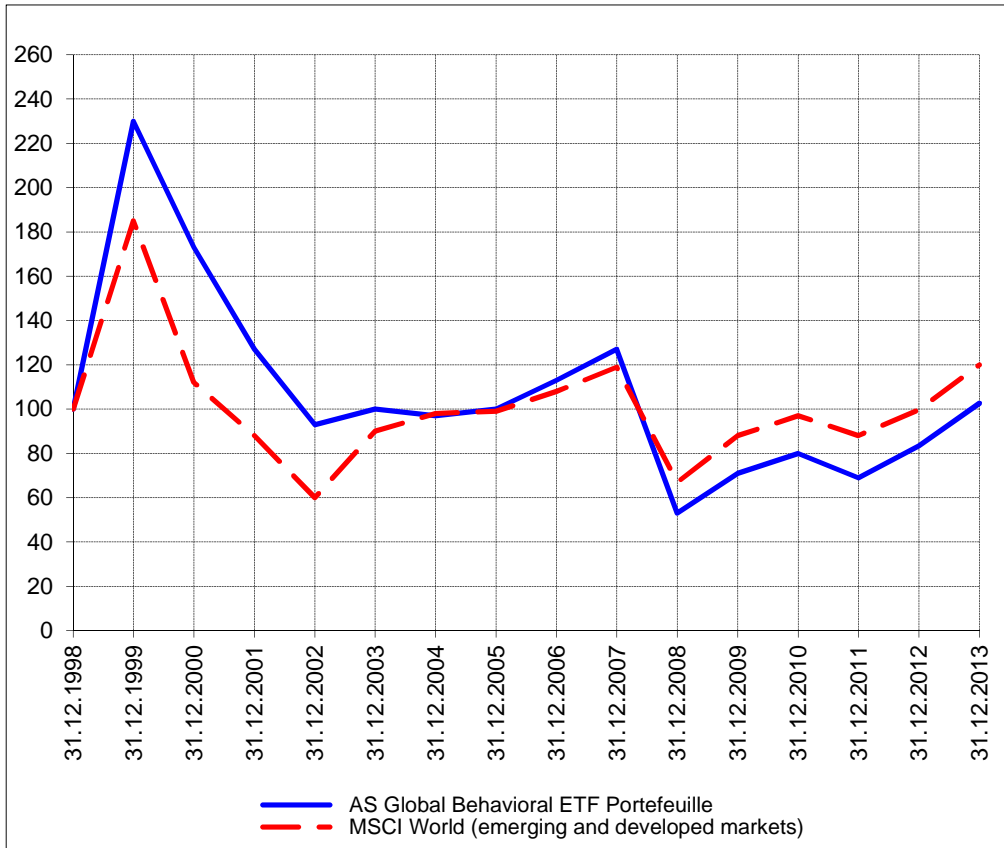
SWISS

**AS**  
Asset Services SA

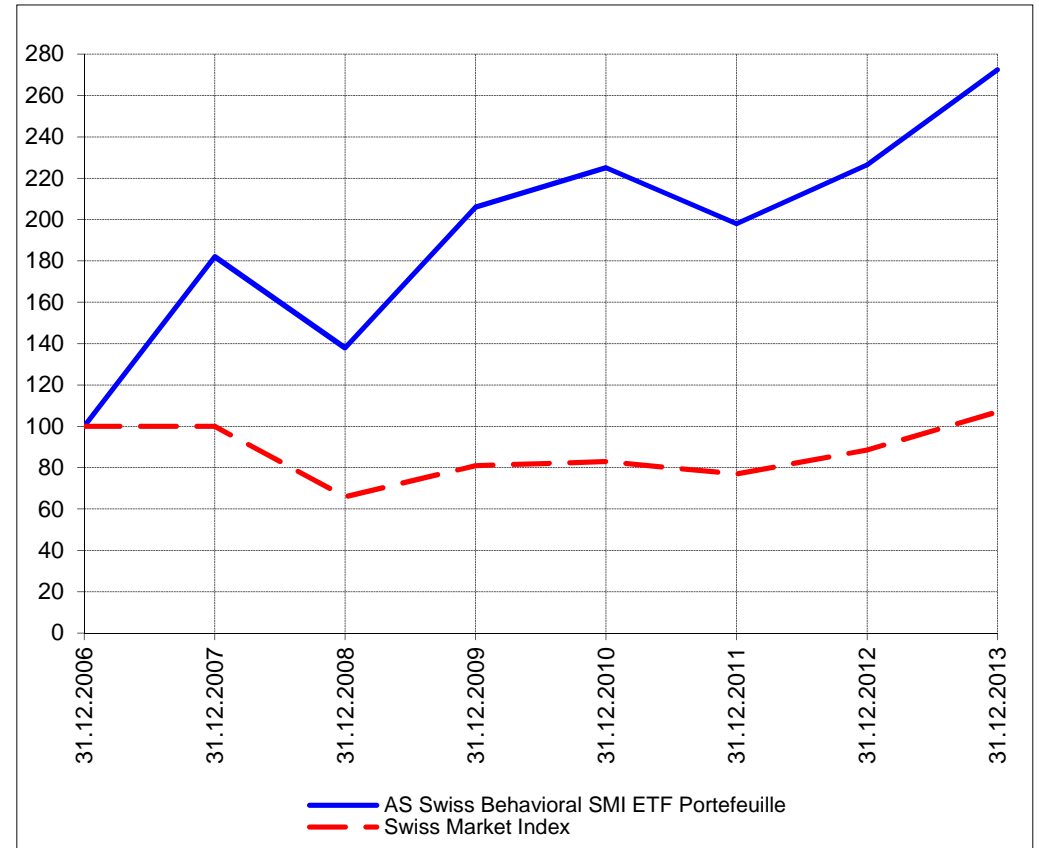
Perf. 12 derniers mois, indexée / Perf. der letzten 12 Monate, indexiert



Perf. depuis création / Perf. seit Lancierung: Global 01. 01. 1999



Perf. depuis création / Perf. seit Lancierung: Swiss 01. 01. 2007



<b>Positions / Positionen</b> différées de 3 mois / um 3 Monate verzögert	Ultra S&P 500 ProShares SSO	19.5%
	iShares Semi Conductor SOXX	15.2%
	SPDR Energy XLE	13.6%
	iShares Oil Equipment & Services IEZ	12.7%
	iShares Oil & Gas Expl. & Prod. IEO	12.5%
	PowerShares QQQ	1.4%
	ProShares Ultra QLD	1.1%

Préservation / Werterhalt	Cash	24.0%
---------------------------	------	-------

XMTCH	90.5%
-------	-------

Cash	9.5%
------	------

<b>Caractéristique / Merkmal</b>	1. Préservation / Werterhalt 2. Outperformance
----------------------------------	---

1. Préservation / Werterhalt 2. Outperformance
---

<b>Gestion / Management</b>	active with a Behavioral approach
-----------------------------	-----------------------------------

active with a Behavioral approach
-----------------------------------

<b>Univers d'investissement / Anlageuniversum</b>	World with region, country and sector ETF's only <b>no</b> Derivatives/Options; <b>no</b> Investment Vehicles; <b>no</b> Private Equity <b>nor any</b> other Financial product <b>no</b> commodities
---	---

Swiss Performance Index <b>no</b> Derivatives/Options; <b>no</b> Investment Vehicles; <b>no</b> Private Equity <b>nor any</b> other Financial product <b>no</b> commodities
--