









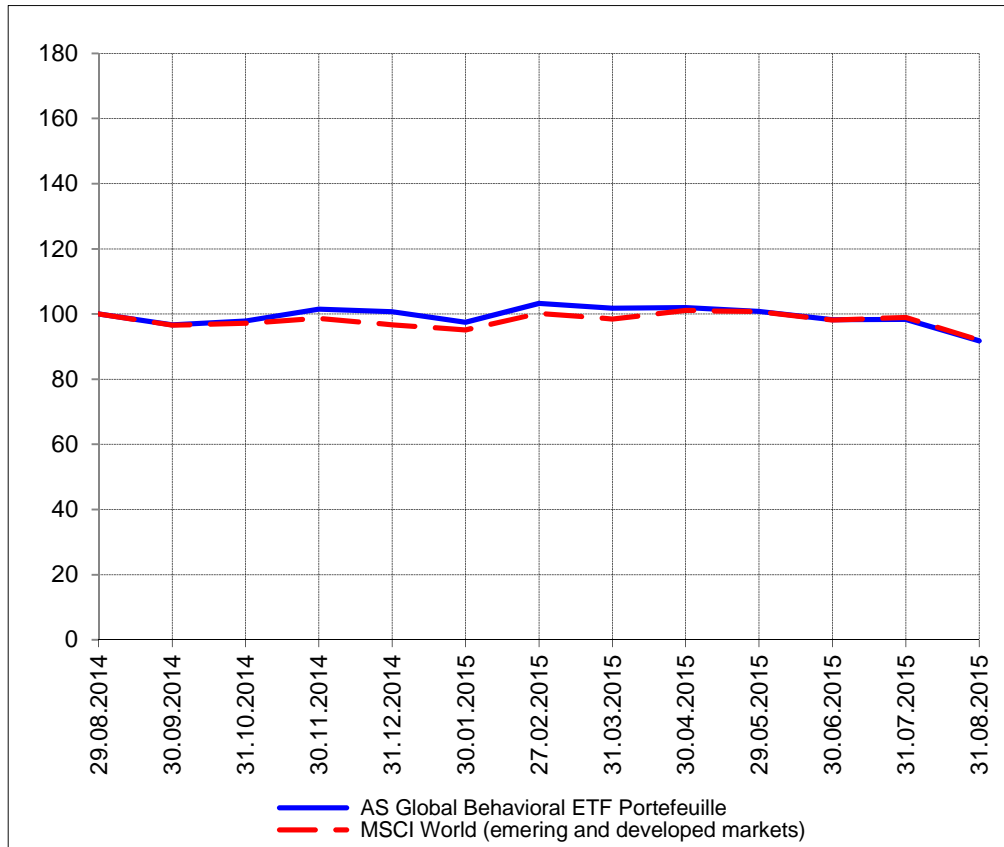
The closing prices (Cours de clôture/Tagesschlusskurse) show results gained after taking into account:  
 > all costs (trading, transactions, regulations, stock exchanges, taxes)  
 > all management fees

Date/Datum	<u>Sentiment-Exposure-Index</u> (approx.)		<u>GLOBAL</u>		<u>SWISS</u>	
	Investi / Investiert	Cash	NAV (USD) CH0034642923 CT1248933 CORP	Benchmark MSCI All Country World Index	NAV (CHF) CH0036308838 CT1248891 CORP	Benchmark Swiss Market Index
31.08.2015			665.91	396.73	2997.44	8824.56
28.08.2015			672.97		2995.43	
27.08.2015			670.93		3004.42	
26.08.2015			657.70		2926.17	
25.08.2015			634.09		2976.52	
24.08.2015			637.82		2886.11	
21.08.2015			663.36		3000.85	
20.08.2015			681.08		3089.06	
19.08.2015			700.29		3136.72	
18.08.2015			705.31		3183.13	
17.08.2015			707.99		3179.92	
14.08.2015			701.01		3166.51	
13.08.2015			700.13		3171.76	
12.08.2015			699.68		3115.73	
11.08.2015			700.60		3191.48	
10.08.2015			708.84		3221.02	
07.08.2015			700.75		3188.13	
06.08.2015			703.12		3204.89	
05.08.2015			713.40		3227.43	
04.08.2015			710.58		3207.33	
03.08.2015			711.00		3202.76	
31.07.2015			713.43	426.78	3196.06	9428.17
31.12.2014			730.70	417.12	2998.24	8983.37

## Portrait du Portefeuille Global / Global Portfolio im Überblick

GLOBAL

Perf. 12 derniers mois, indexée / Perf. der 12 letzten Monate, indexiert

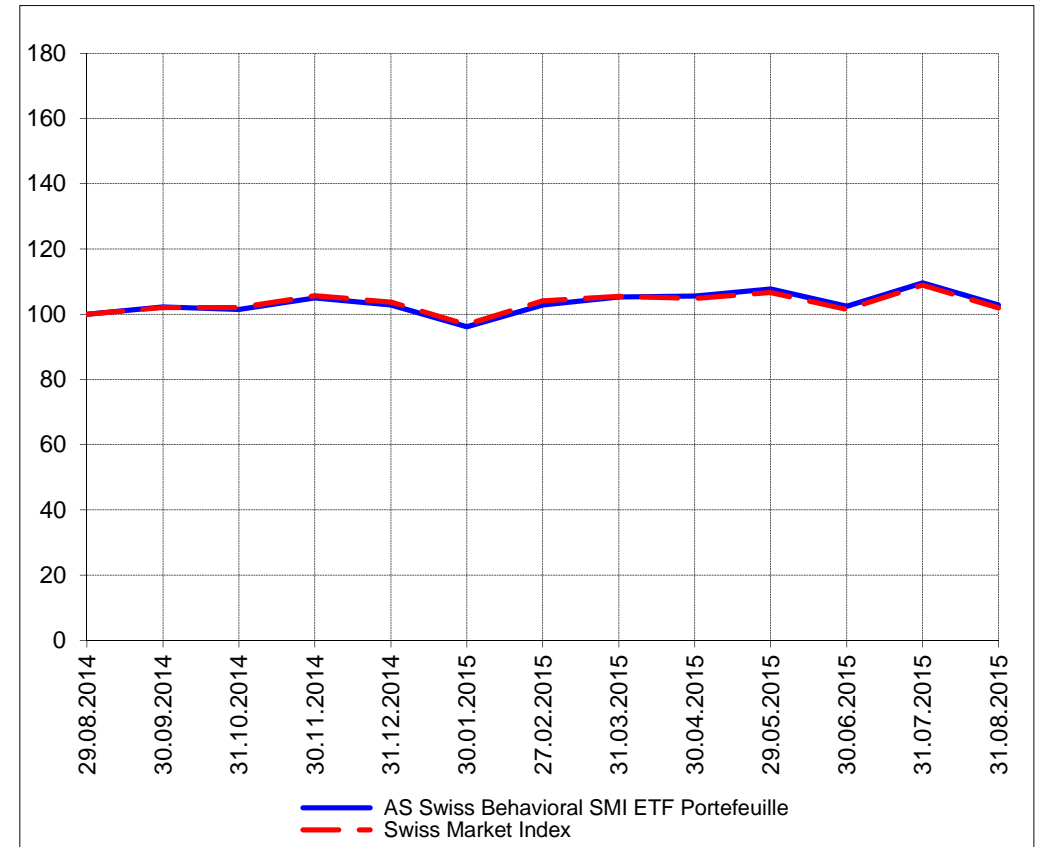


## Portrait du Portefeuille Swiss / Swiss Portfolio im Überblick

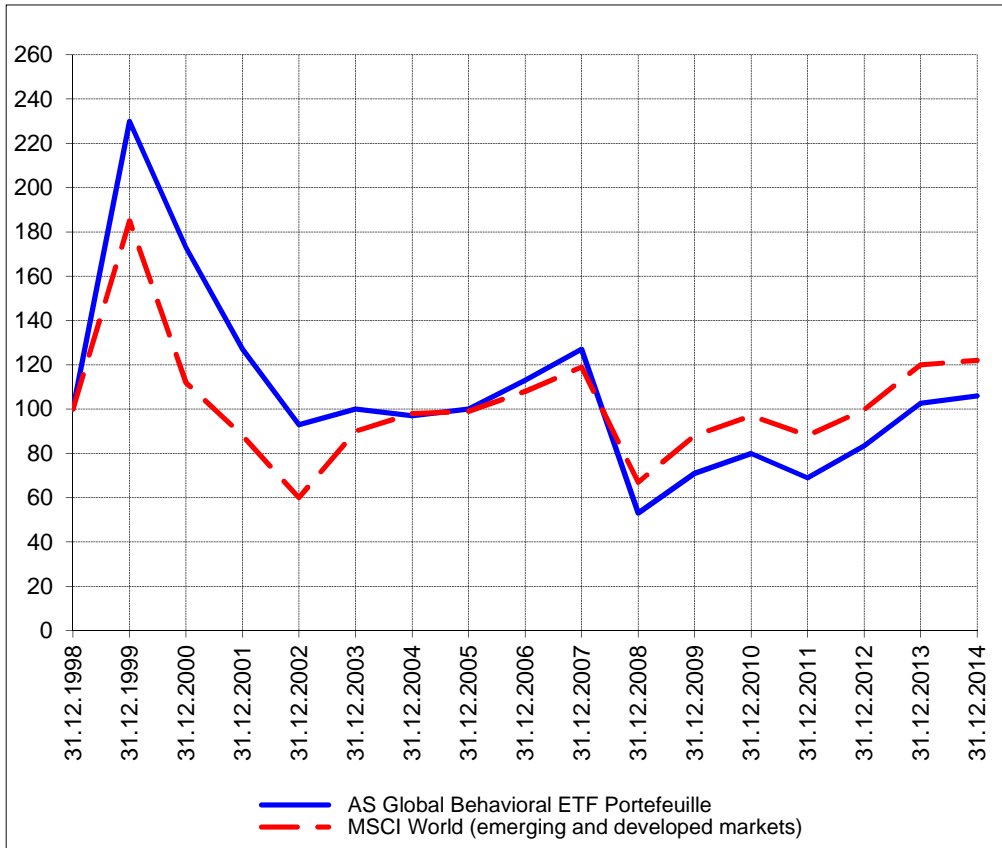
SWISS

**AS**  
Asset Services SA

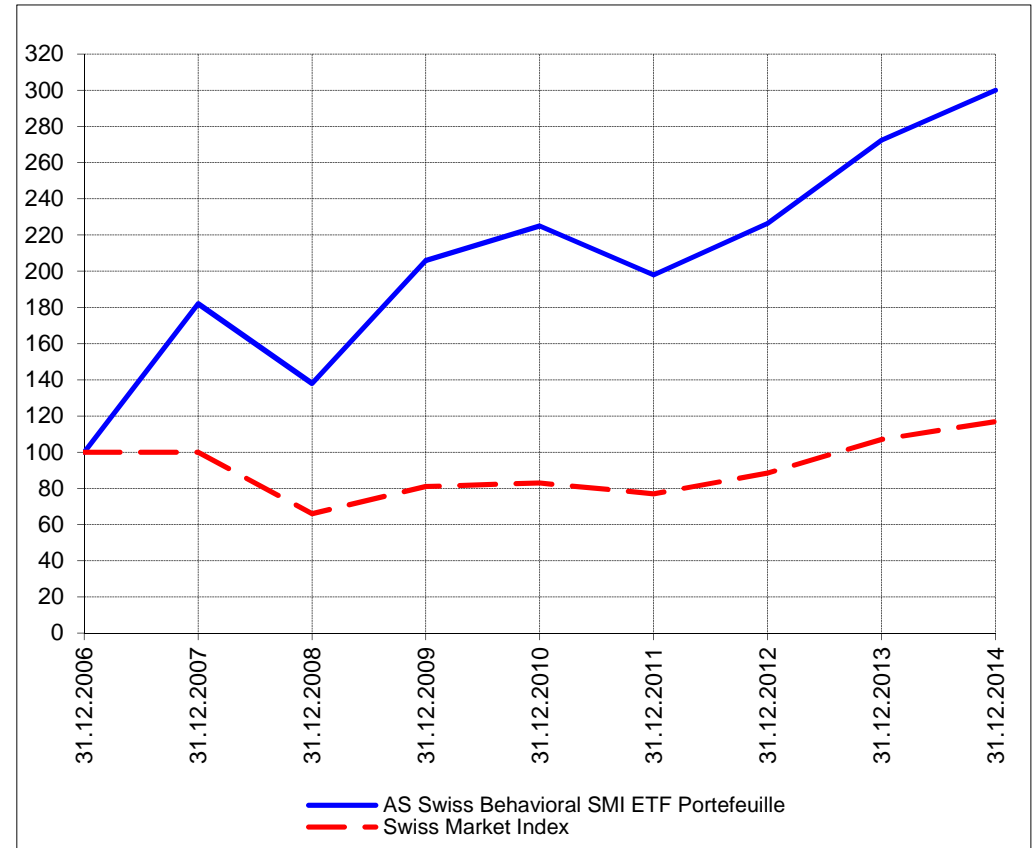
Perf. 12 derniers mois, indexée / Perf. der letzten 12 Monate, indexiert



Perf. depuis création / Perf. seit Lancierung: Global 01. 01. 1999



Perf. depuis création / Perf. seit Lancierung: Swiss 01. 01. 2007



<b>Positions / Positionen</b> différées de 3 mois / um 3 Monate verzögert	PowerShares QQQ	26.4%
	iShares China Large-Cap FXI	13.5%
	iShares Japan EWJ	12.9%
	Guggenheim Solar TAN	11.8%
	iShares Asia 50 AIA	6.7%
	iShares MSCI South Korea EWY	6.7%
	SPDR S&P Biotech XBI	5.8%
	Market Vectors Russia ETF RSX	4.0%
	SPDR Homebuilders XHB	2.3%
	iShares Switzerland EWL	2.1%

XMTCH 93.6%

Préservation / Werterhalt	Cash	7.8%
---------------------------	------	------

Cash 6.4%

**Caractéristique / Merkmal**  
1. Préservation / Werterhalt  
2. Outperformance

1. Préservation / Werterhalt  
2. Outperformance

**Gestion / Management** active with a Behavioral approach

active with a Behavioral approach

**Univers d'investissement /  
Anlageuniversum** World with region, country and sector ETF's only  
**no** Derivatives/Options; **no** Investment Vehicles;  
**no** Private Equity **nor any** other Financial product  
**no** commodities

Swiss Performance Index  
**no** Derivatives/Options; **no** Investment Vehicles;  
**no** Private Equity **nor any** other Financial product  
**no** commodities