






The closing prices (Cours de clôture/Tagesschlusskurse) show results gained after taking into account:
 > all costs (trading, transactions, regulations, stock exchanges, taxes)
 > all management fees

Date/Datum	<u>Sentiment-Exposure-Index</u> (approx.)		<u>GLOBAL</u>		<u>SWISS</u>	
	Investi / Investiert	Cash	NAV (USD) CH0034642923 CT1248933 CORP	Benchmark MSCI All Country World Index	NAV (CHF) CH0036308838 CT1248891 CORP	Benchmark Swiss Market Index
28.09.2012			578.71	331.58	2182.89	6495.88
27.09.2012			581.63		2199.53	
26.09.2012			574.53		2193.90	
25.09.2012			580.37		2218.68	
24.09.2012			587.93		2211.61	
21.09.2012			592.16		2214.90	
20.09.2012			590.89		2200.47	
19.09.2012			591.97		2203.29	
18.09.2012			588.96		2195.07	
17.09.2012			589.83		2200.58	
14.09.2012			592.03		2200.58	
13.09.2012			585.40		2188.22	
12.09.2012			577.08		2181.44	
11.09.2012			573.57		2184.98	
10.09.2012			572.84		2186.45	
07.09.2012			577.52		2192.34	
06.09.2012			577.45		2191.46	
05.09.2012			566.82		2160.23	
04.09.2012			568.09		2141.96	
03.09.2012			pas de cours/geschlossen		2162.88	
31.08.2012			564.53	322.14	2157.28	6388.01
30.12.2011			477.20	299.51	1979.61	5936.23

Portrait du Portefeuille Global / Global Portfolio im Überblick



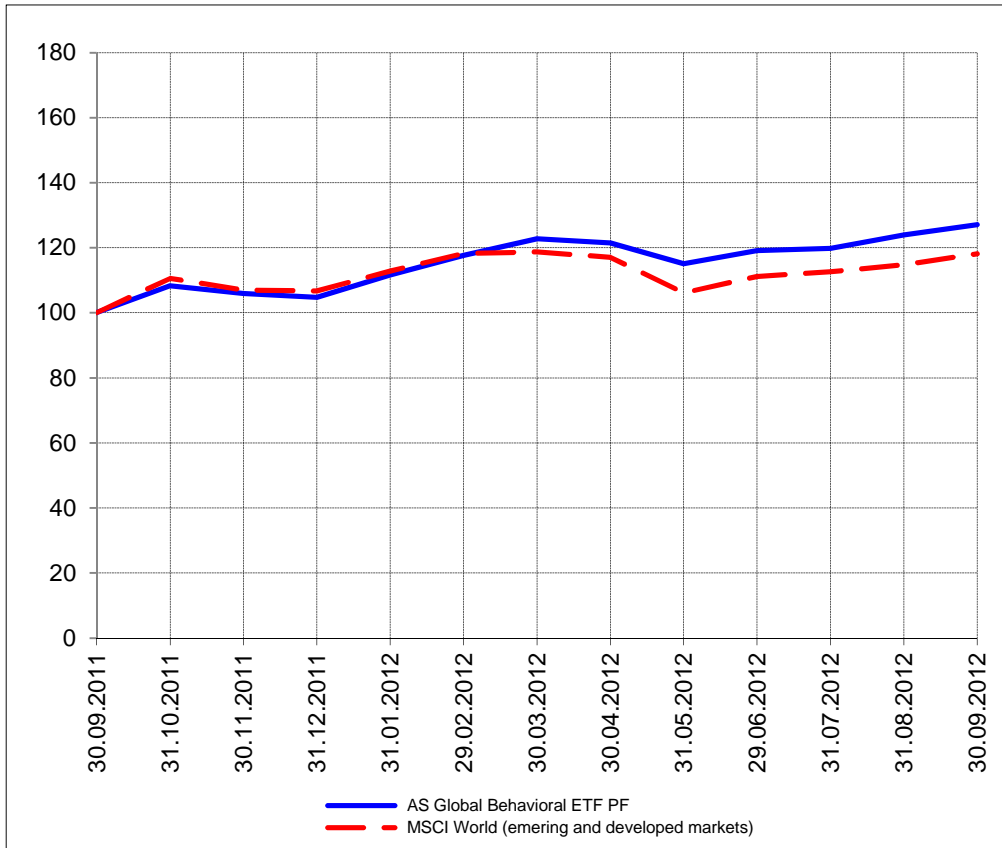
Portrait du Portefeuille Swiss / Swiss Portfolio im Überblick



GLOBAL



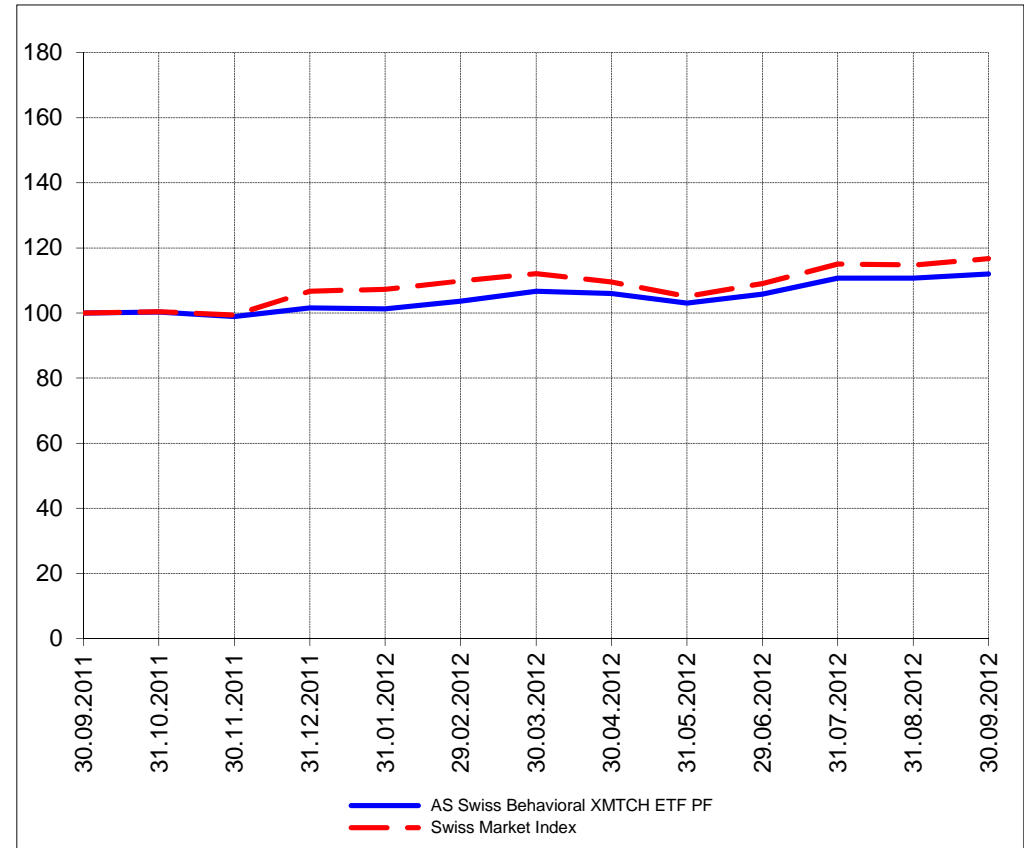
Perf. 12 derniers mois, indexée / Perf. der 12 letzten Monate, indexiert



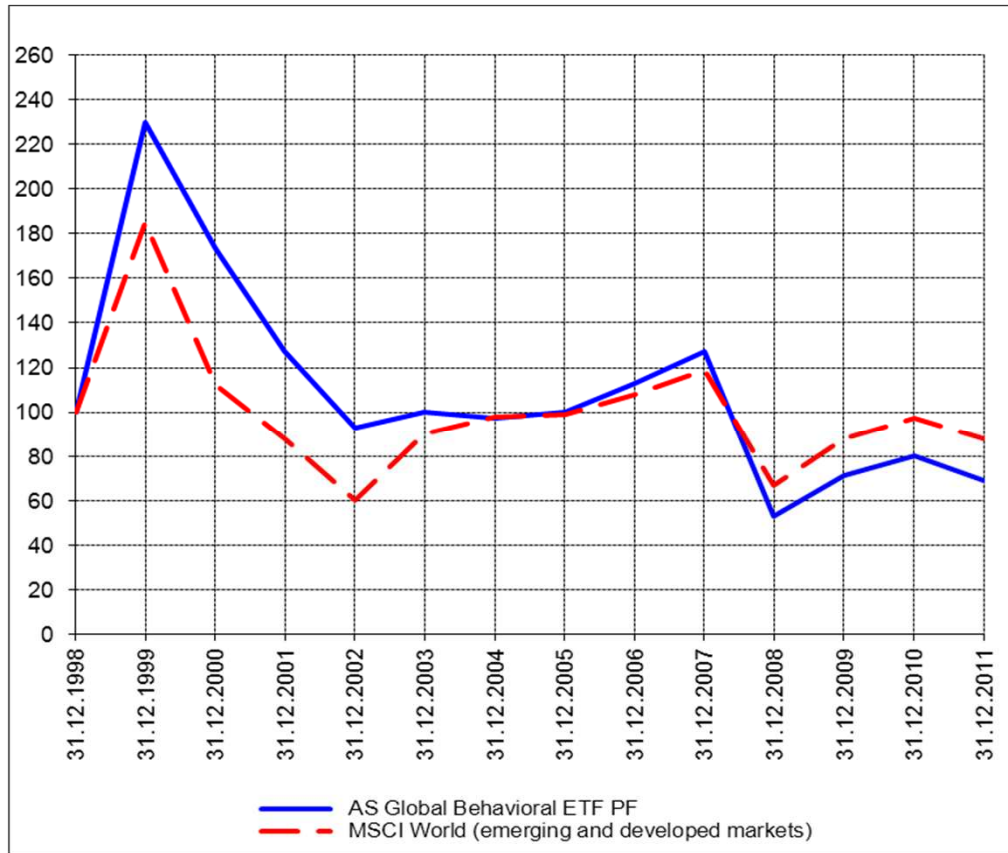
SWISS



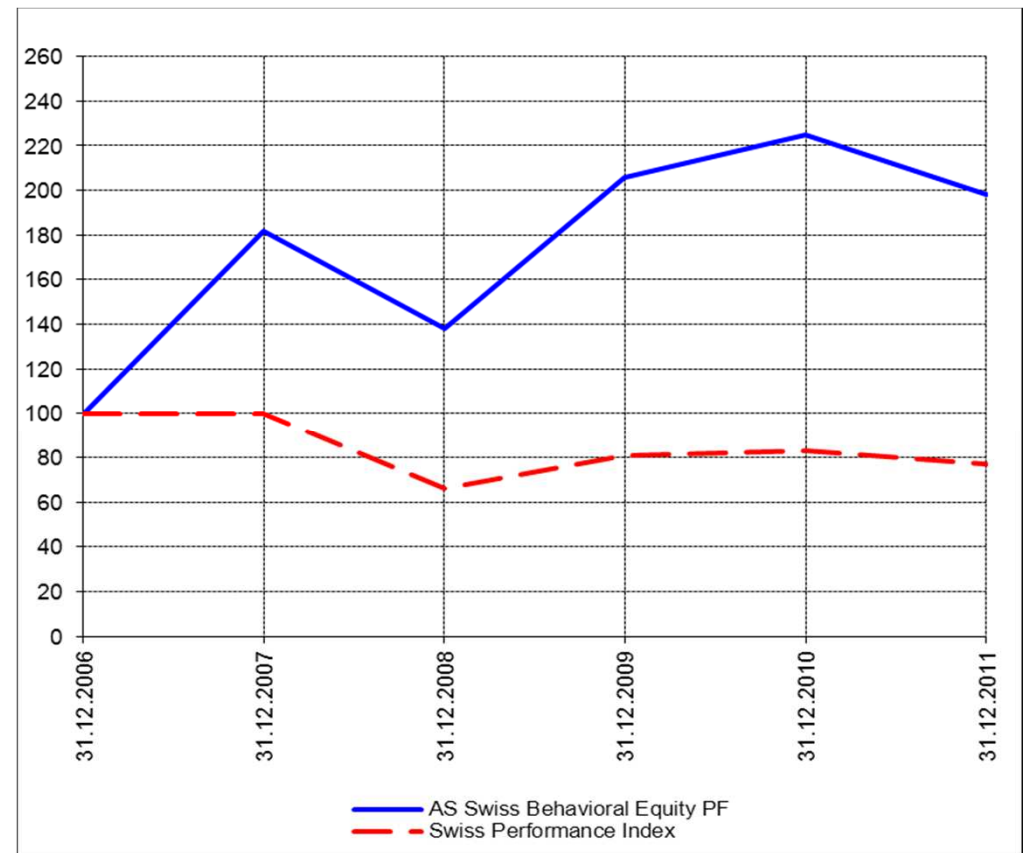
Perf. 12 derniers mois, indexée / Perf. der letzten 12 Monate, indexiert



Perf. depuis création / Perf. seit Lancierung: Global 01. 01. 1999



Perf. depuis création / Perf. seit Lancierung: Swiss 01. 01. 2007



Positions / Positionen différées de 3 mois / um 3 Monate verzögert	SPDR Biotech XBI	15.9%
	SPDR Homebuilders XHB	13.0%
	PowerShares QQQ	11.9%
	SPDR S&P 500 SPY	11.3%
	ProShares NASDAQ Index QLD	10.4%
	SPDR DJ Wilshire REIT RWR	9.7%
	iShares US Regionals Banks IAT	7.4%

XMTCH 81.0%

Caractéristique / Merkmal

1. Préservation / Werterhalt
2. Outperformance

1. Préservation / Werterhalt
2. Outperformance

Gestion / Management active with a Behavioral approach

active with a Behavioral approach

**Univers d'investissement /
Anlageuniversum**

World with region, country and sector ETF's only
no Derivatives/Options; **no** Investment Vehicles;
no Private Equity **nor any** other Financial product
no commodities

Swiss Performance Index
no Derivatives/Options; **no** Investment Vehicles;
no Private Equity **nor any** other Financial product
no commodities