








The closing prices (Cours de clôture/Tagesschlusskurse) show results gained after taking into account:  
 > all costs (trading, transactions, regulations, stock exchanges, taxes)  
 > all management fees

Date/Datum	<u>Sentiment-Exposure-Index</u> (approx.)		<u>GLOBAL</u>		<u>SWISS</u>	
	Investi / Investiert	Cash	NAV (USD)	Benchmark	NAV (CHF)	Benchmark
			CH0034642923 CT1248933 CORP	MSCI All Country World Index	CH0036308838 CT1248891 CORP	Swiss Market Index
30.09.2013			666.29	382.07	2671.23	8022.60
27.09.2013			671.85		2679.47	
26.09.2013			673.89		2680.77	
25.09.2013			670.37		2681.09	
24.09.2013			671.13		2678.18	
23.09.2013			672.22		2683.36	
20.09.2013			676.94		2695.33	
19.09.2013			682.29		2695.97	
18.09.2013			683.24		2678.32	
17.09.2013			675.36		2668.38	
16.09.2013			671.15		2672.42	
13.09.2013			668.34		2672.98	
12.09.2013			667.08		2673.89	
11.09.2013			669.86		2679.74	
10.09.2013			669.39		2679.44	
09.09.2013			665.74		2643.43	
06.09.2013			656.46		2646.70	
05.09.2013			655.88		2641.05	
04.09.2013			654.27		2626.30	
03.09.2013			647.41		2623.08	
02.09.2013			pas de cours/geschlossen		2630.95	
30.08.2013			641.44	363.98	2594.55	7745.97
<b>31.12.2012</b>			<b>576.59</b>	<b>339.75</b>	<b>2264.73</b>	<b>6822.44</b>

Portrait du Portefeuille Global / Global Portfolio im Überblick



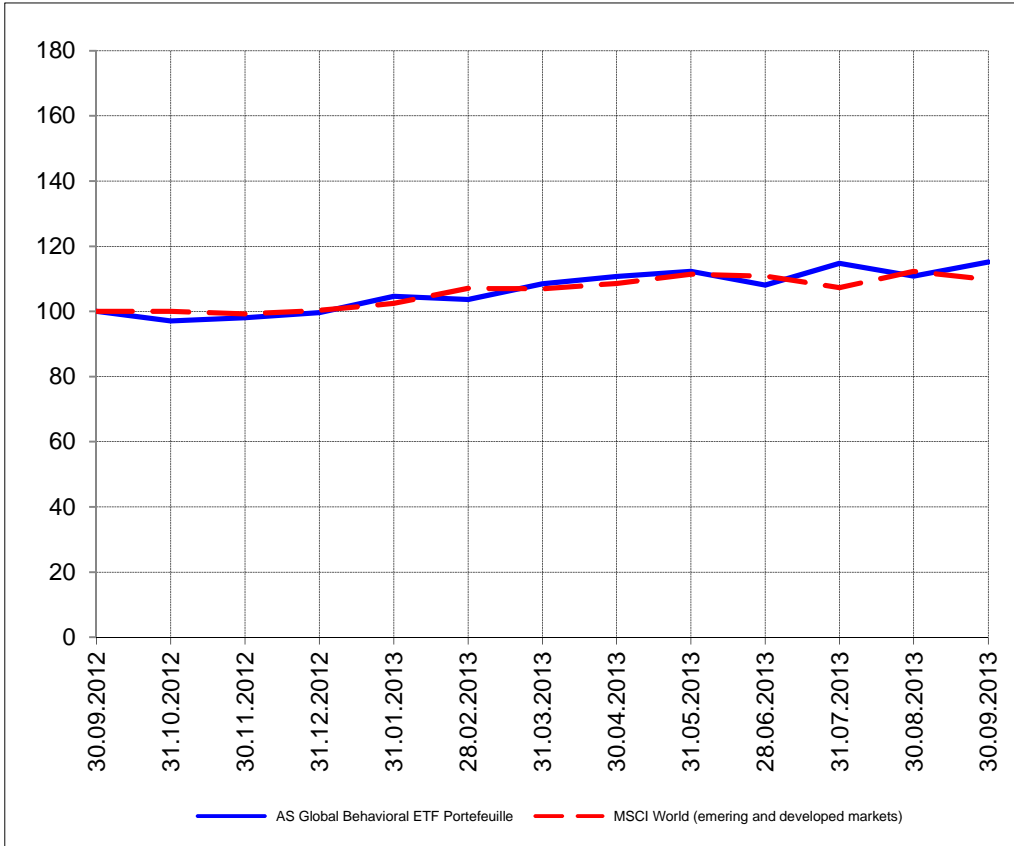
Portrait du Portefeuille Swiss / Swiss Portfolio im Überblick



**GLOBAL**



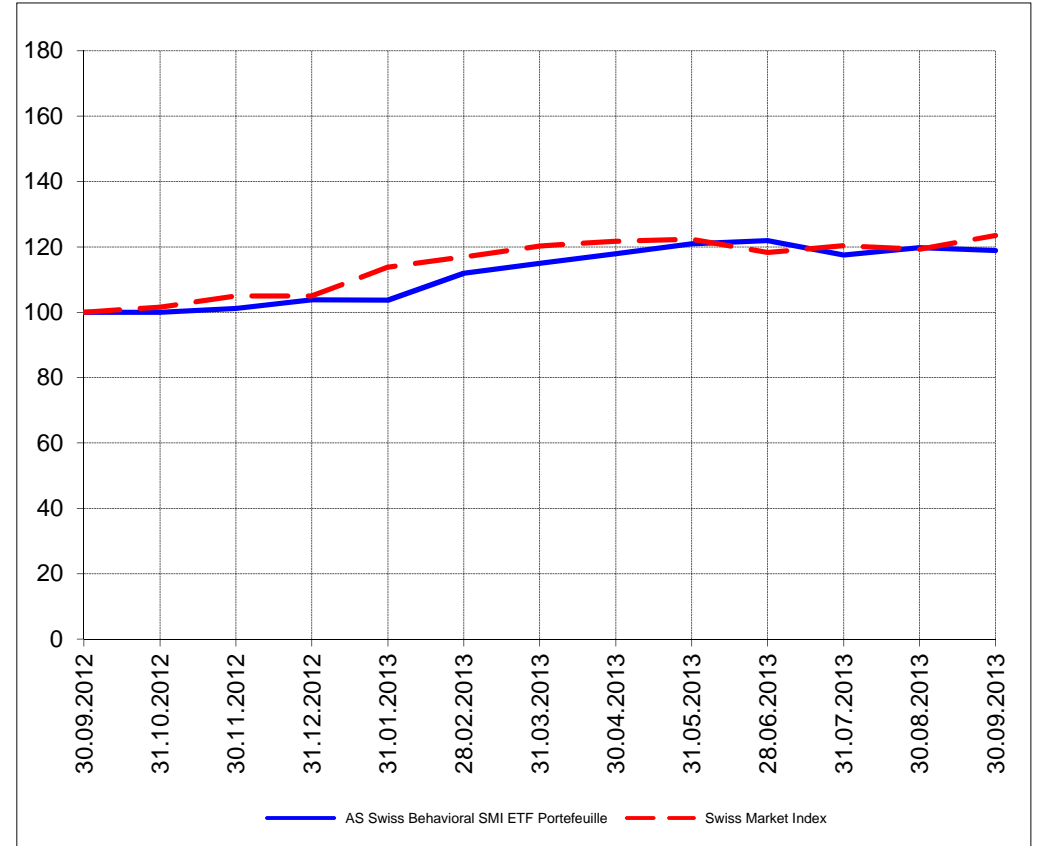
Perf. 12 derniers mois, indexée / Perf. der 12 letzten Monate, indexiert



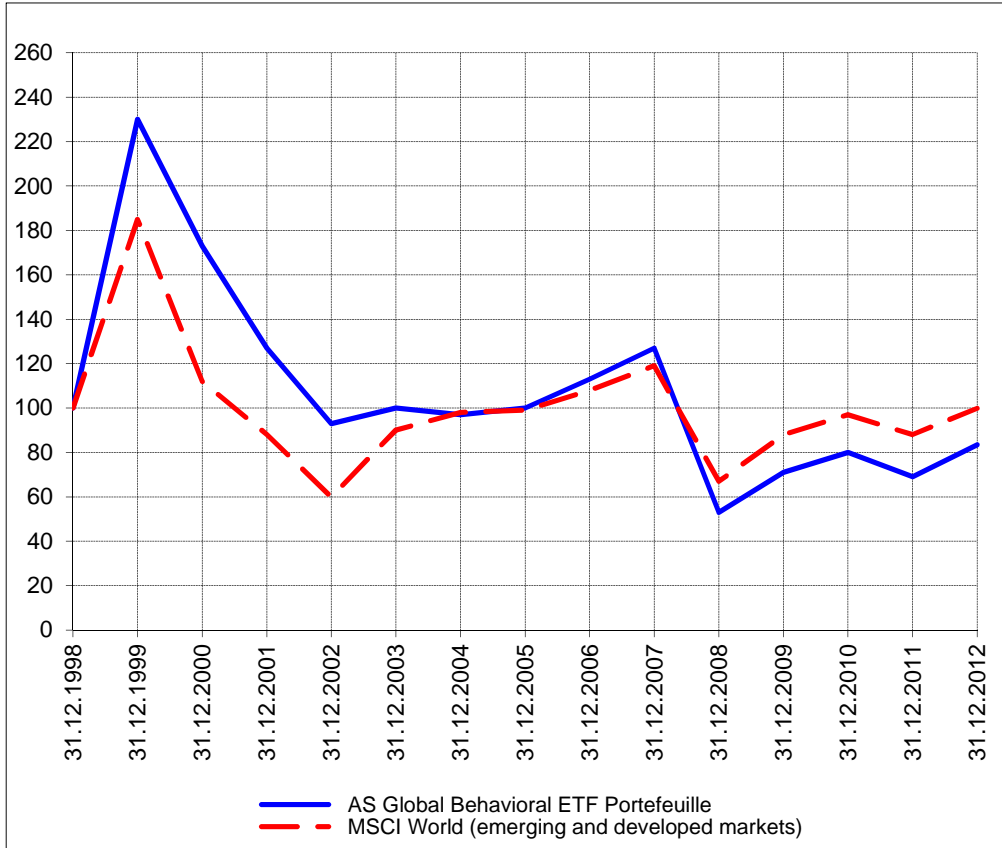
**SWISS**



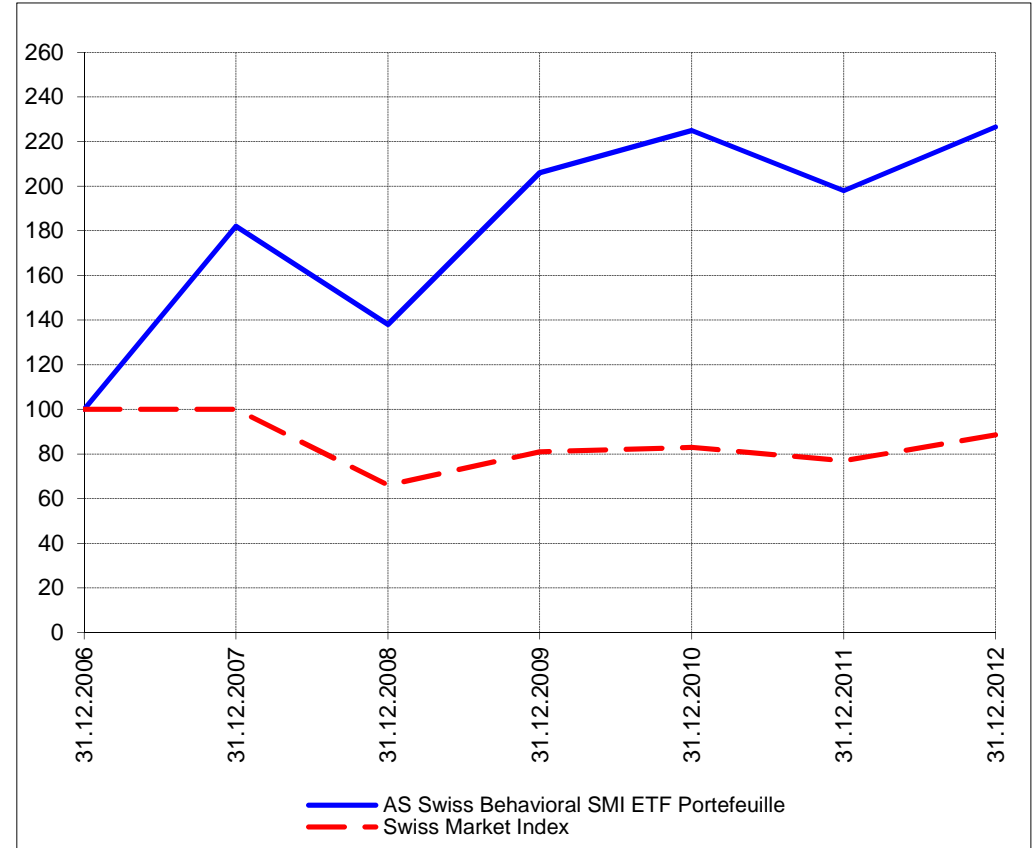
Perf. 12 derniers mois, indexée / Perf. der letzten 12 Monate, indexiert



Perf. depuis création / Perf. seit Lancierung: Global 01. 01. 1999



Perf. depuis création / Perf. seit Lancierung: Swiss 01. 01. 2007



<b>Positions / Positionen</b> différées de 3 mois / um 3 Monate verzögert	SPDR Homebuilders XHB	19.8%
	SPDR Biotech XBI	16.5%
	SPDR S&P 500 SPY	11.1%
	Direxion Financial FAS	7.8%
	Vanguard World Stock Index VT	3.1%
	ProShares Real Estate URE	3.0%
	Direxion Energy ERX	2.4%
	Direxion Develop. markets DZK	0.9%

Préservation / Werterhalt	Cash	35.4%
---------------------------	------	-------

XMTCH	91.7%
-------	-------

Cash	8.3%
------	------

<b>Caractéristique / Merkmal</b>	1. Préservation / Werterhalt 2. Outperformance
----------------------------------	---

1. Préservation / Werterhalt 2. Outperformance
---

<b>Gestion / Management</b>	active with a Behavioral approach
-----------------------------	-----------------------------------

active with a Behavioral approach
-----------------------------------

<b>Univers d'investissement / Anlageuniversum</b>	World with region, country and sector ETF's only <b>no</b> Derivatives/Options; <b>no</b> Investment Vehicles; <b>no</b> Private Equity <b>nor any</b> other Financial product <b>no</b> commodities
---	---

Swiss Performance Index <b>no</b> Derivatives/Options; <b>no</b> Investment Vehicles; <b>no</b> Private Equity <b>nor any</b> other Financial product <b>no</b> commodities
--