

The closing prices (Cours de clôture/Tagesschlusskurse) show results gained after taking into account:
 > all costs (trading, transactions, regulations, stock exchanges, taxes)
 > all management fees

Date/Datum	Global (USD)	Benchmark	Cours de clôture/Tagesschlusskurse		Benchmark
	CH0034642923 CT1248933 CORP	MSCI All Country World Index	Swiss (CHF)		Swiss Performance Index
			CH0036308838 CT1248891 CORP		
30.10.09	412.10	282.59	2024.62		5402.58
29.10.09	428.77		2052.59		
28.10.09	425.54		2035.29		
27.10.09	437.08		2071.33		
26.10.09	447.58		2059.85		
23.10.09	451.93		2101.18		
22.10.09	457.89		2116.43		
21.10.09	451.48		2124.58		
20.10.09	453.63		2135.58		
19.10.09	459.96		2154.32		
16.10.09	451.51		2117.86		
15.10.09	462.36		2135.05		
14.10.09	464.32		2131.94		
13.10.09	447.24		2105.63		
12.10.09	448.88		2120.91		
9.10.09	445.39		2089.72		
8.10.09	440.66		2090.93		
7.10.09	429.53		2083.69		
6.10.09	430.44		2094.67		
5.10.09	422.61		2043.91		
2.10.09	412.99		2034.95		
1.10.09	414.69		2077.26		
30.9.09	434.86	287.23	2104.24		5461.31
31.12.2008	366.17	227.68	1379.13		4567.57

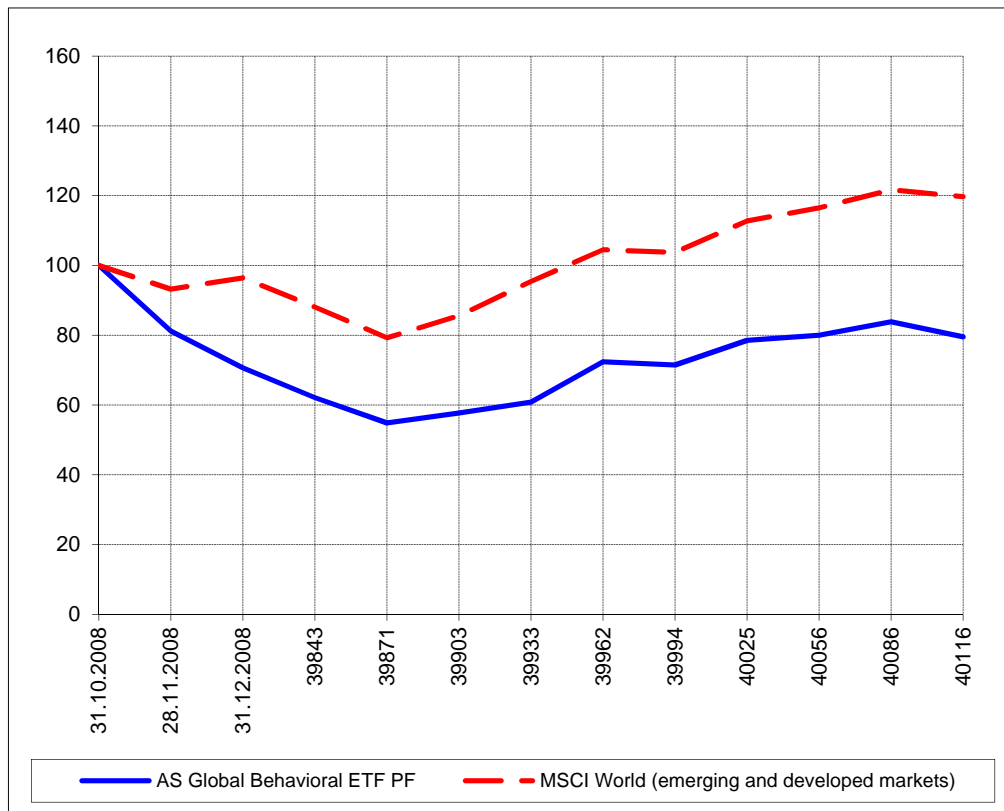
Portrait du Portefeuille Global / Global Portfolio im Überblick



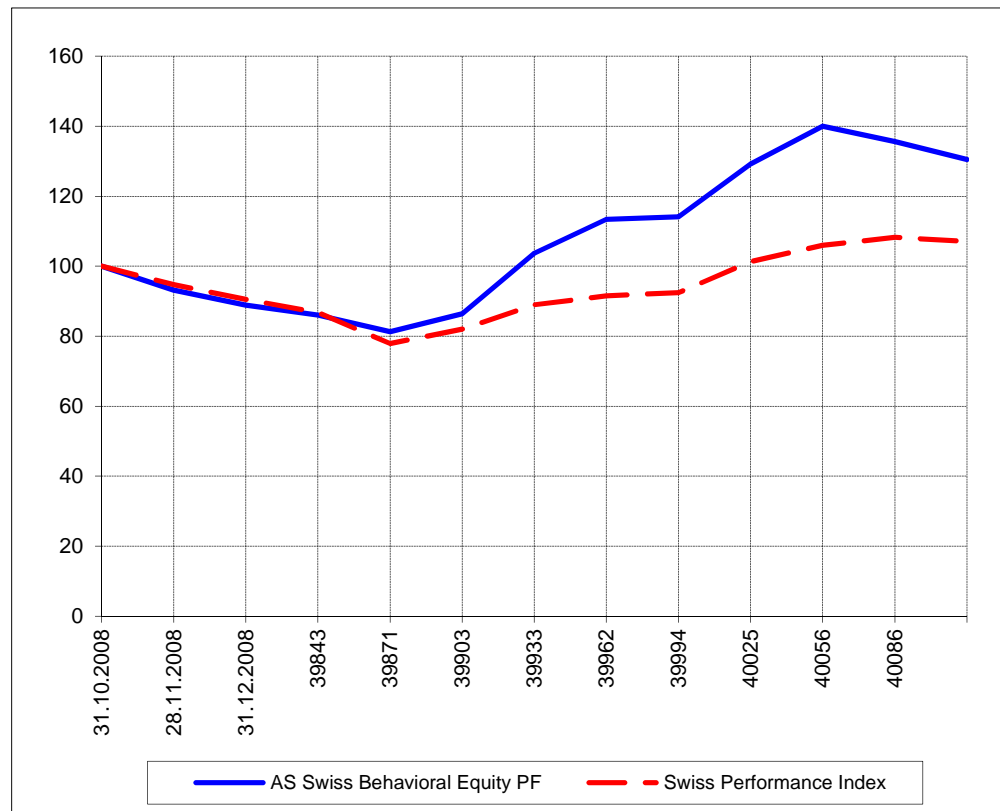
Portrait du Portefeuille Swiss / Swiss Portfolio im Überblick



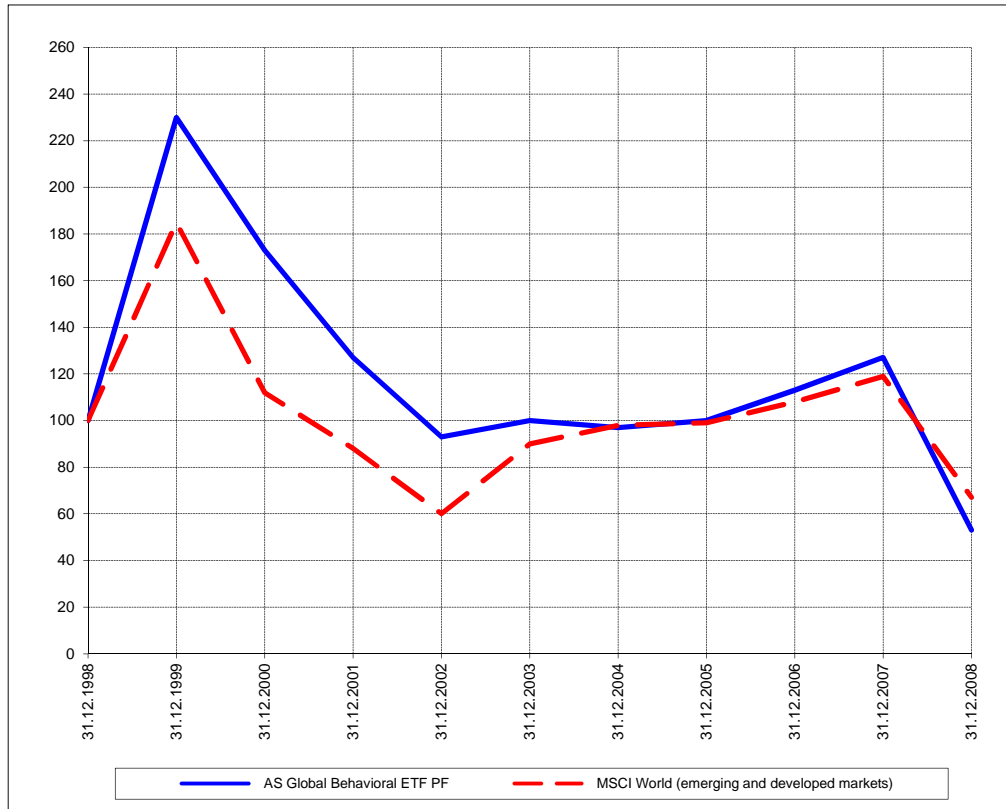
Perf. 12 derniers mois, indexée / Perf. 12 letzten Monaten, indexiert



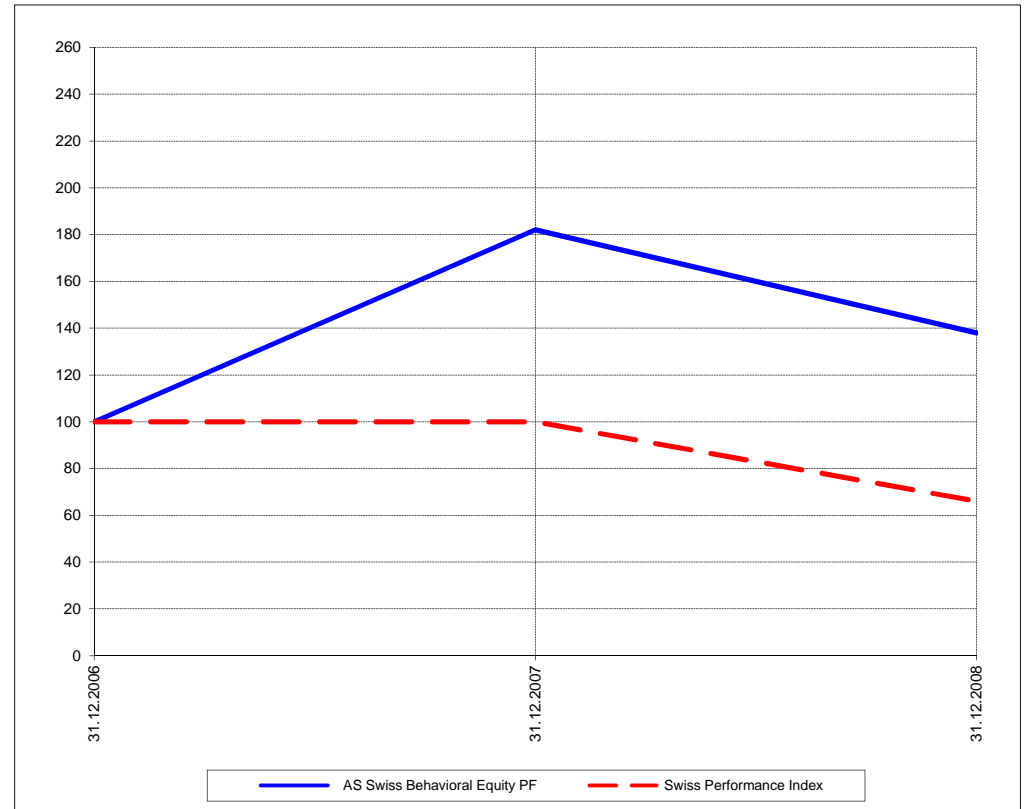
Perf. 12 derniers mois, indexée / Perf. 12 letzten Monaten, indexiert



Perf. depuis création / Perf. seit Lancierung: Global 01. 01. 1999



Perf. depuis création / Perf. seit Lancierung: Swiss 01. 01. 2007



Positions / Positionen différées de 3 mois / um 3 Monate verzögert	iShares Brazil EWZ	18.4 %
	iShares South America ILF	19.1 %
	iShares Emerging Markets EEM	19.5 %
	iShares China FXI	20.3 %
	SPDR Financial XLF	9.6 %
	ProShares NASDAQ Index QLD	13.4 %

Schmolz und Bickenbach	10.9 %
Vontobel	9.7 %
CS	9.1 %
Swiss Life	10.4 %
Swiss Re	4.8 %
Schindler	9.5 %
Julius Baer	5.2 %
Kudelski	10.2 %
UBS	4.7 %
Logitech	10.5 %
XMTCH	14.5 %

Caractéristique / Merkmal outperformance

outperformance

Gestion / Management active with a Behavioral approach

active with a Behavioral approach

**Univers d'investissement /
Anlageuniversum** World with region, country and sector ETF's only
no Derivatives/Options; **no** Investment Vehicles;
no Private Equity **nor any** other Financial product
no commodities

Swiss Performance Index
no Derivatives/Options; **no** Investment Vehicles;
no Private Equity **nor any** other Financial product
no commodities