

The closing prices (Cours de clôture/Tagesschlusskurse) show results gained after taking into account:
 > all costs (trading, transactions, regulations, stock exchanges, taxes)
 > all management fees

Date/Datum	Cours de clôture/Tagesschlusskurse			
	Global (USD) CH0034642923 CT1248933 CORP	Benchmark MSCI All Country World Index	Swiss (CHF) CH0036308838 CT1248891 CORP	Benchmark Swiss Performance Index
31.10.2011	493.51	310.41	1953.89	5211.91
28.10.2011	504.91		1984.69	
27.10.2011	501.87		1978.48	
26.10.2011	488.82		1959.17	
25.10.2011	486.60		1961.08	
24.10.2011	496.18		1975.22	
21.10.2011	487.77		1969.49	
20.10.2011	481.12		1938.06	
19.10.2011	481.52		1949.62	
18.10.2011	489.40		1947.00	
17.10.2011	481.42		1954.48	
14.10.2011	489.64		1964.91	
13.10.2011	480.12		1953.41	
12.10.2011	477.62		1961.31	
11.10.2011	476.32		1956.61	
10.10.2011	474.33		1963.30	
07.10.2011	463.85		1957.44	
06.10.2011	466.02		1957.42	
05.10.2011	460.77		1942.30	
04.10.2011	453.52		1930.38	
03.10.2011	447.86		1941.72	
30.09.2011	455.42	280.64	1948.42	5006.46
31.12.2010	550.55	330.64	2250.31	5790.62

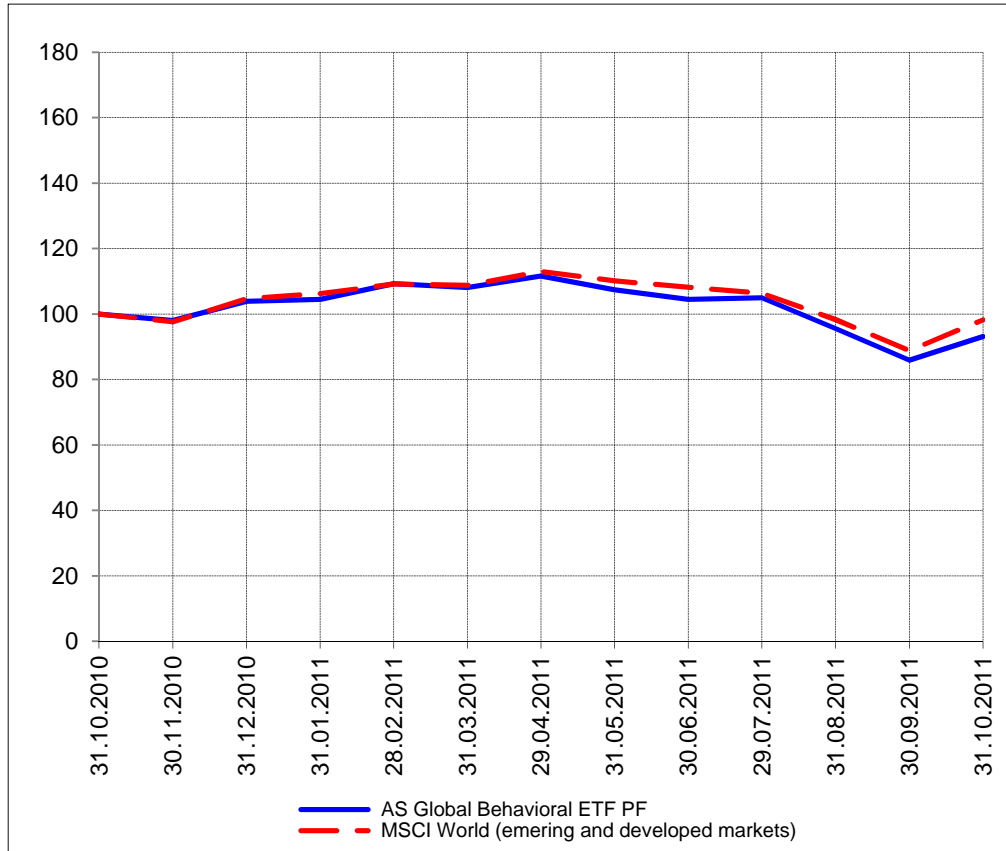
Portrait du Portefeuille Global / Global Portfolio im Überblick



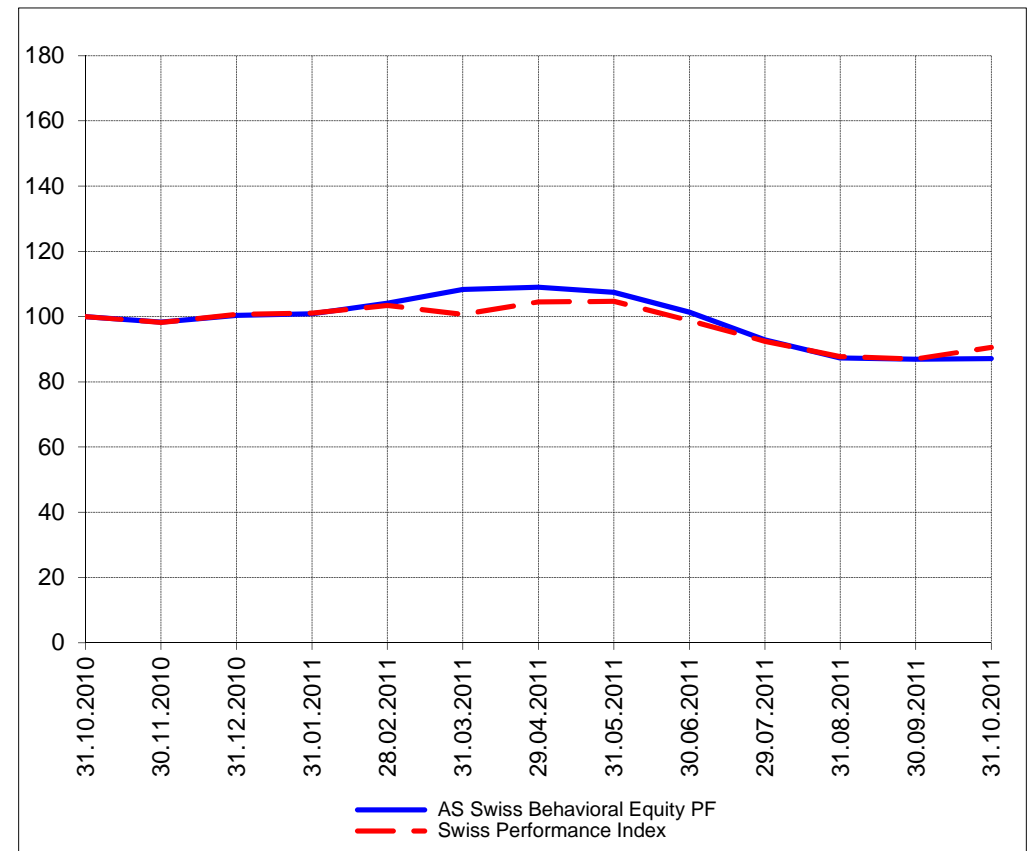
Portrait du Portefeuille Swiss / Swiss Portfolio im Überblick



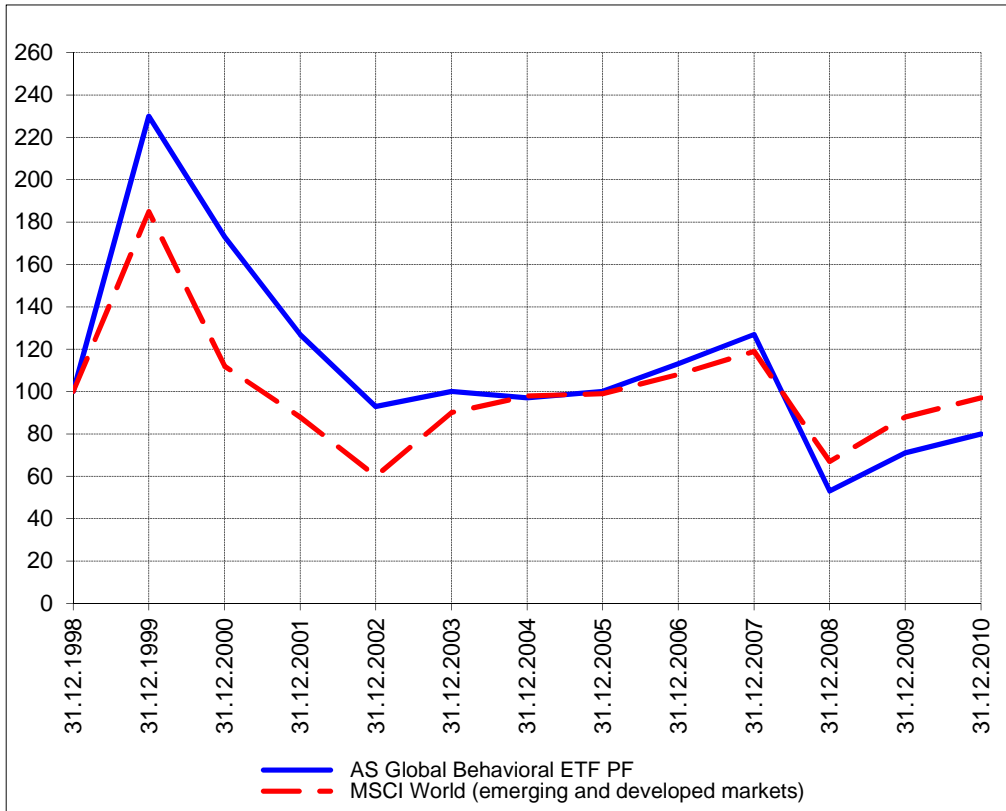
Perf. 12 derniers mois, indexée / Perf. 12 letzten Monaten, indexiert



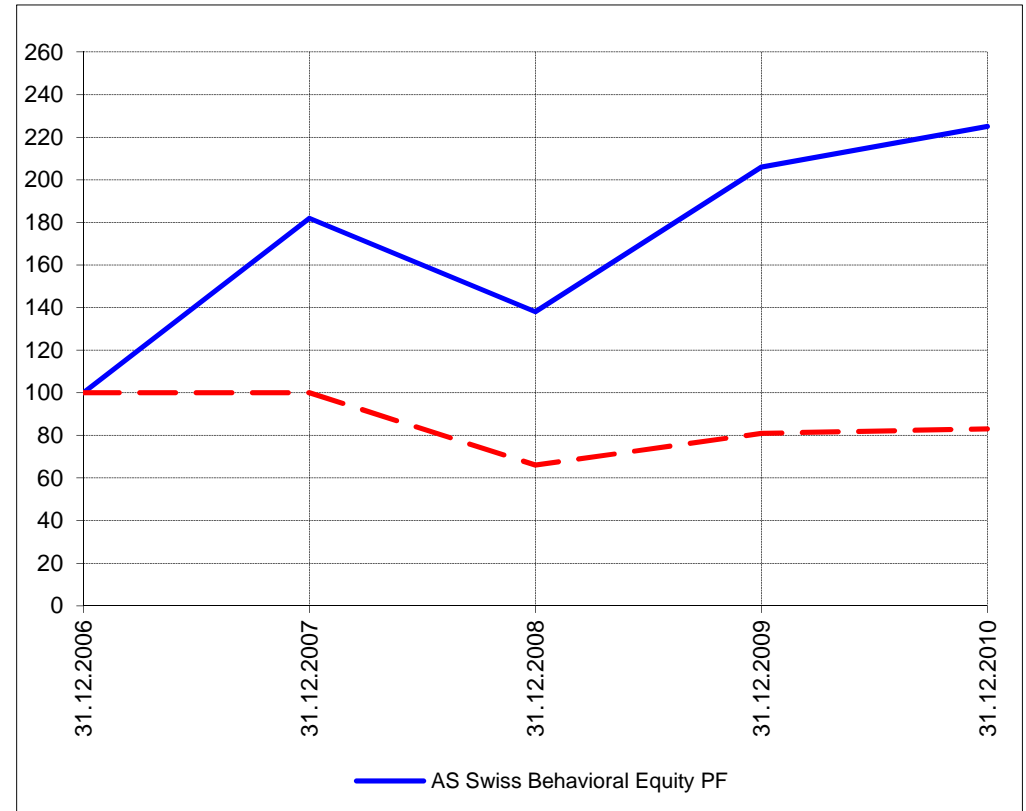
Perf. 12 derniers mois, indexée / Perf. 12 letzten Monaten, indexiert



Perf. depuis création / Perf. seit Lancierung: Global 01. 01. 1999



Perf. depuis création / Perf. seit Lancierung: Swiss 01. 01. 2007



Positions / Positionen différées de 3 mois / um 3 Monate verzögert	SPDR Energy XLE	16.3%
	iShares Oil Equipment IEZ	16.2%
	ProShares NASDAQ Index QLD	15.8%
	Rydex S&P 500 RSU	13.7%
	ProShares Real Estate URE	5.5%

XMTCH	46.4%
PSP	12.0%
Bossard	9.4%
Synthes	7.9%
Lem	6.5%
IVF	2.8%
HBM	2.7%
Barry Callebaut	2.7%
Metall ZG	2.3%

Caractéristique / Merkmal outperformance

outperformance

Gestion / Management active with a Behavioral approach

active with a Behavioral approach

**Univers d'investissement /
Anlageuniversum** World with region, country and sector ETF's only
no Derivatives/Options; **no** Investment Vehicles;
no Private Equity **nor any** other Financial product
no commodities

Swiss Performance Index
no Derivatives/Options; **no** Investment Vehicles;
no Private Equity **nor any** other Financial product
no commodities