

The closing prices (Cours de clôture/Tagesschlusskurse) show results gained after taking into account:  
 > all costs (trading, transactions, regulations, stock exchanges, taxes)  
 > all management fees

# AS

Asset Services SA

Date/Datum	<u>Sentiment-Exposure-Index</u> (approx.)		<u>GLOBAL</u>		<u>SWISS</u>	
	Investi / Investiert	Cash	NAV (USD) CH0034642923 CT1248933 CORP	Benchmark MSCI All Country World Index	NAV (CHF) CH0036308838 CT1248891 CORP	Benchmark Swiss Market Index
31.10.2012			561.60	329.07	2207.55	6595.13
30.10.2012			pas de cours/geschlossen		2223.43	
29.10.2012			pas de cours/geschlossen		2209.00	
26.10.2012			561.53		2210.44	
25.10.2012			564.50		2212.95	
24.10.2012			564.64		2217.08	
23.10.2012			565.76		2218.86	
22.10.2012			571.80		2252.23	
19.10.2012			572.53		2254.88	
18.10.2012			582.32		2263.45	
17.10.2012			584.57		2264.04	
16.10.2012			579.20		2261.97	
15.10.2012			574.85		2240.41	
12.10.2012			570.22		2228.01	
11.10.2012			572.98		2228.60	
10.10.2012			573.85		2220.04	
09.10.2012			575.97		2224.47	
08.10.2012			584.99		2228.01	
05.10.2012			589.16		2231.85	
04.10.2012			588.41		2219.68	
03.10.2012			585.23		2210.20	
02.10.2012			580.57		2213.93	
01.10.2012			578.08		2212.78	
28.09.2012			578.71	331.58	2182.89	6495.88
<b>30.12.2011</b>			<b>477.20</b>	<b>299.51</b>	<b>1979.61</b>	<b>5936.23</b>

Portrait du Portefeuille Global / Global Portfolio im Überblick



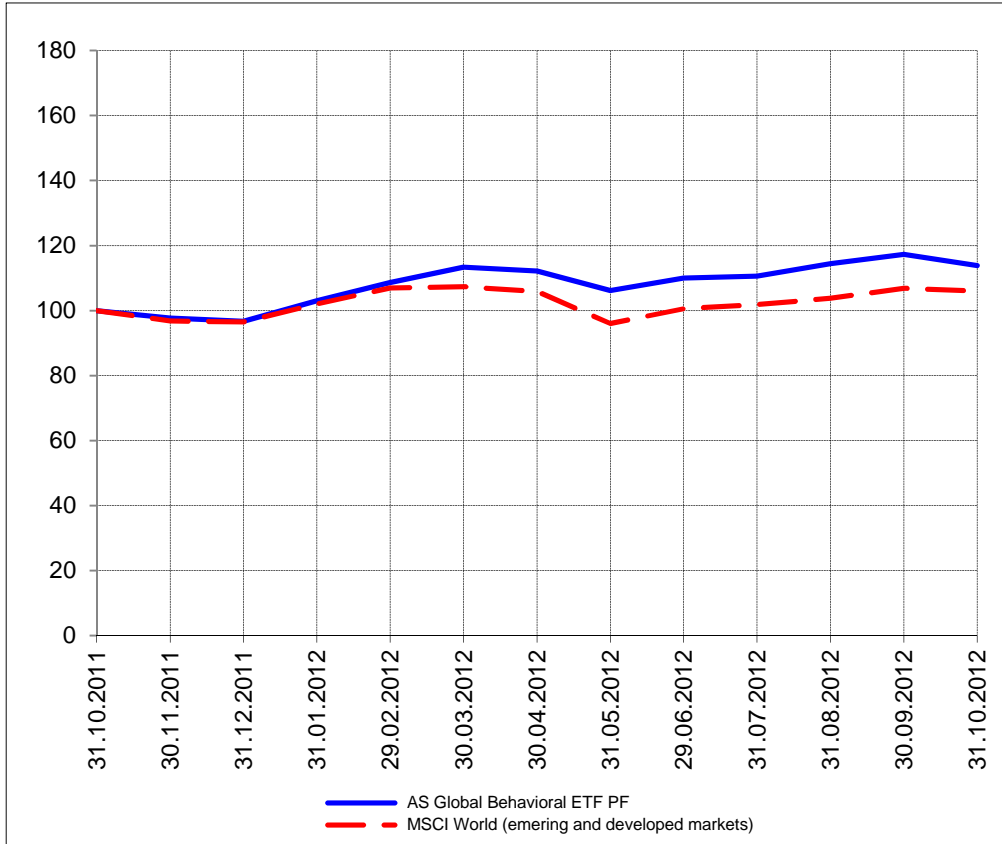
Portrait du Portefeuille Swiss / Swiss Portfolio im Überblick



**GLOBAL**



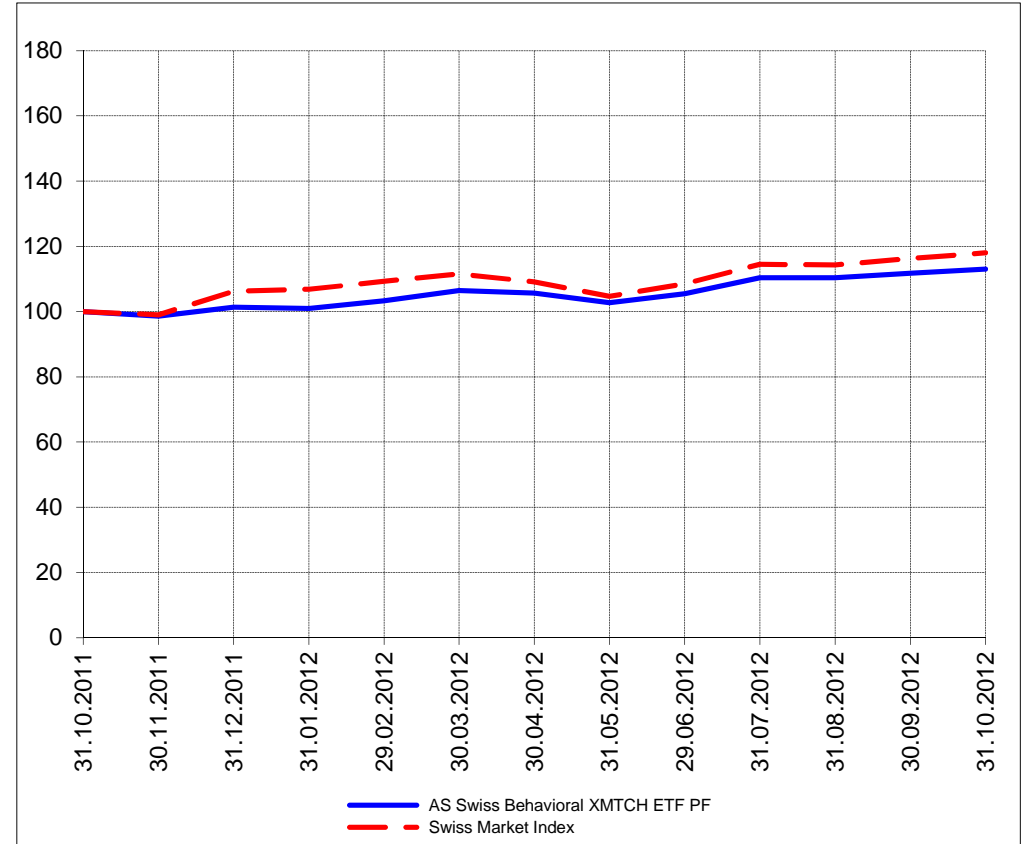
Perf. 12 derniers mois, indexée / Perf. der 12 letzten Monate, indexiert



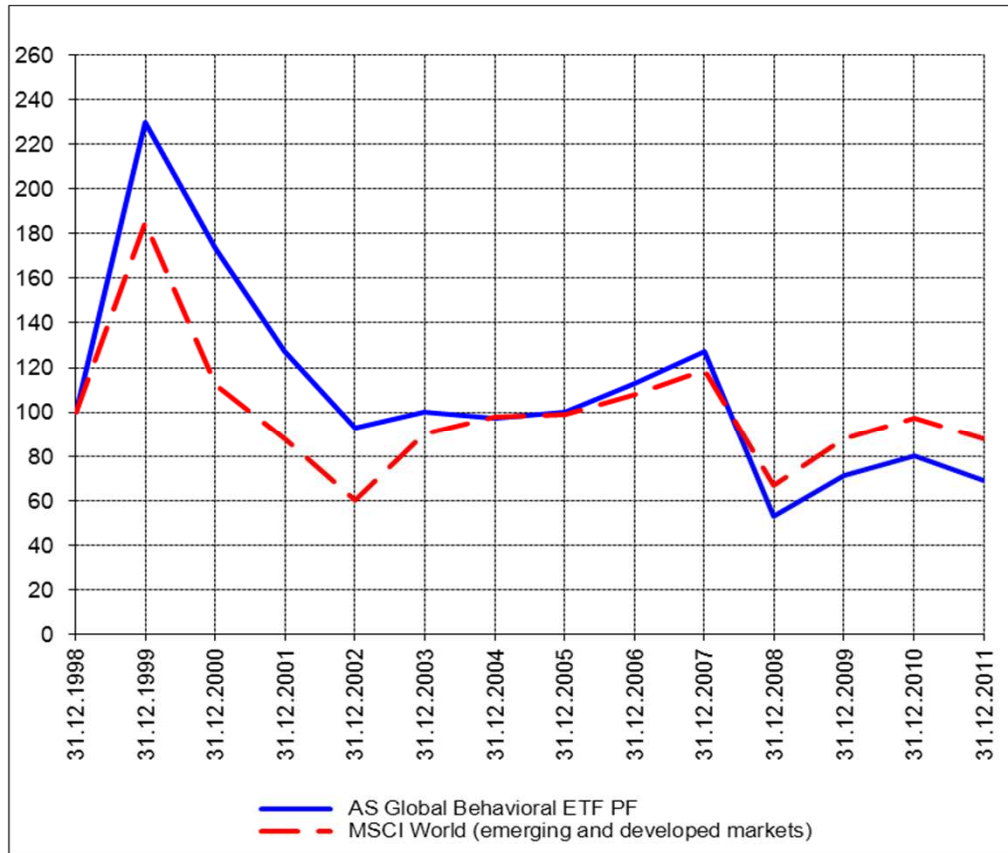
**SWISS**



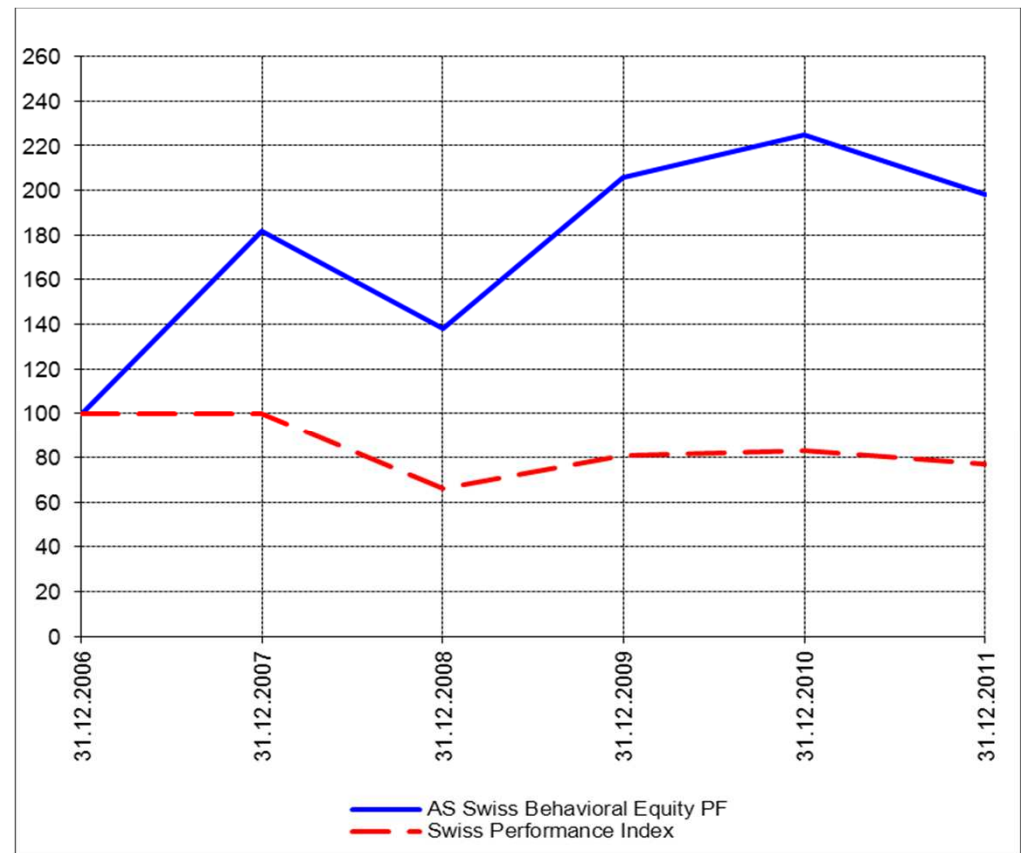
Perf. 12 derniers mois, indexée / Perf. der letzten 12 Monate, indexiert



Perf. depuis création / Perf. seit Lancierung: Global 01. 01. 1999



Perf. depuis création / Perf. seit Lancierung: Swiss 01. 01. 2007



<b>Positions / Positionen</b> différées de 3 mois / um 3 Monate verzögert	SPDR Biotech XBI	18.3%
	SPDR Homebuilders XHB	13.3%
	PowerShares QQQ	11.9%
	SPDR S&P 500 SPY	11.4%
	ProShares NASDAQ Index QLD	8.8%
	SPDR DJ Wilshire REIT RWR	9.9%
	iShares US Regionals Banks IAT	7.4%

XMTCH 87.5%

**Caractéristique / Merkmal**

1. Préservation / Werterhalt  
2. Outperformance

1. Préservation / Werterhalt  
2. Outperformance

**Gestion / Management** active with a Behavioral approach

active with a Behavioral approach

**Univers d'investissement /  
Anlageuniversum**

World with region, country and sector ETF's only  
**no** Derivatives/Options; **no** Investment Vehicles;  
**no** Private Equity **nor any** other Financial product  
**no** commodities

Swiss Performance Index  
**no** Derivatives/Options; **no** Investment Vehicles;  
**no** Private Equity **nor any** other Financial product  
**no** commodities