

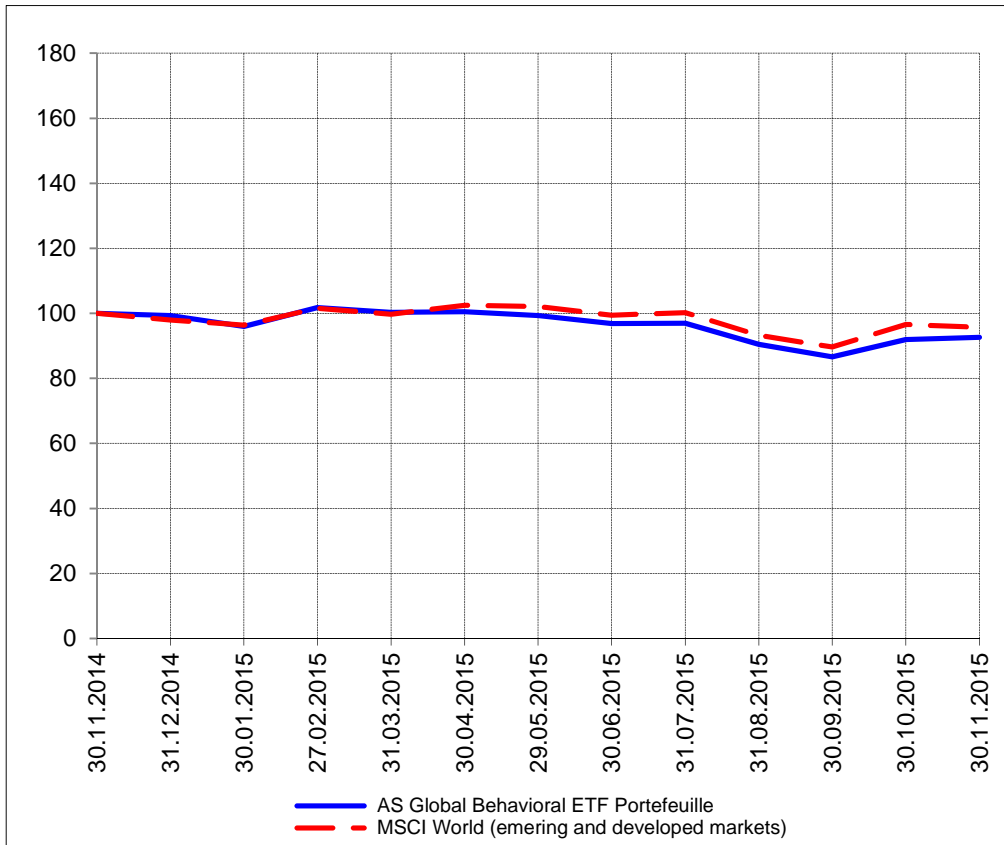
The closing prices (Cours de clôture/Tagesschlusskurse) show results gained after taking into account:
 > all costs (trading, transactions, regulations, stock exchanges, taxes)
 > all management fees

Date/Datum	<u>Sentiment-Exposure-Index</u> (approx.)		<u>GLOBAL</u>		<u>SWISS</u>	
	Investi / Investiert	Cash	NAV (USD) CH0034642923 CT1248933 CORP	Benchmark MSCI All Country World Index	NAV (CHF) CH0036308838 CT1248891 CORP	Benchmark Swiss Market Index
30.11.2015			681.31	407.20	3045.84	8993.10
27.11.2015			684.73		3054.96	
26.11.2015			pas de cours/geschlossen		3041.02	
25.11.2015			683.74		3033.25	
24.11.2015			682.71		2986.16	
23.11.2015			682.19		3029.88	
20.11.2015			682.88		3054.01	
19.11.2015			679.35		3050.09	
18.11.2015			678.87		3041.65	
17.11.2015			669.83		3035.62	
16.11.2015			669.64		2961.78	
13.11.2015			661.82		2974.98	
12.11.2015			670.34		3008.99	
11.11.2015			677.84		3017.67	
10.11.2015			677.82		3001.26	
09.11.2015			675.28		3010.59	
06.11.2015			682.67		3043.09	
05.11.2015			684.89		3054.67	
04.11.2015			684.25		3042.37	
03.11.2015			685.57		3034.02	
02.11.2015			684.87		3034.02	
30.10.2015			676.25	411.25	3030.87	8938.65
31.12.2014			730.70	417.12	2998.24	8983.37

Portrait du Portefeuille Global / Global Portfolio im Überblick

GLOBAL

Perf. 12 derniers mois, indexée / Perf. der 12 letzten Monate, indexiert

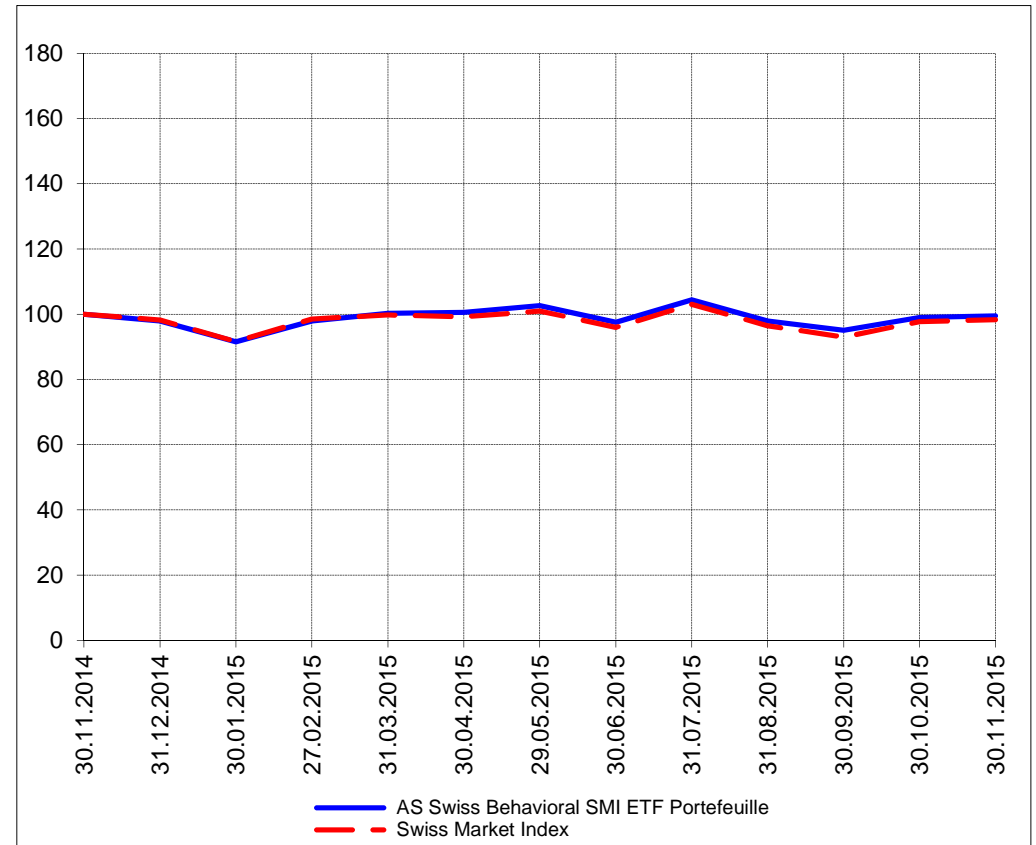


Portrait du Portefeuille Swiss / Swiss Portfolio im Überblick

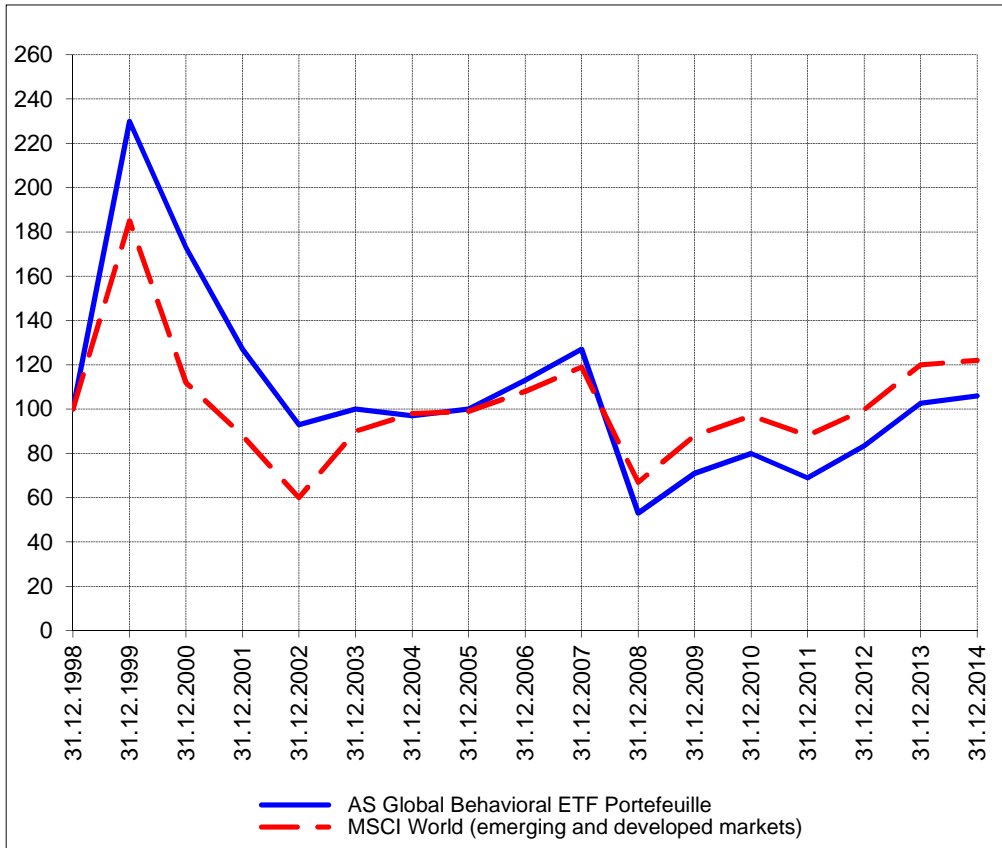
SWISS

AS
Asset Services SA

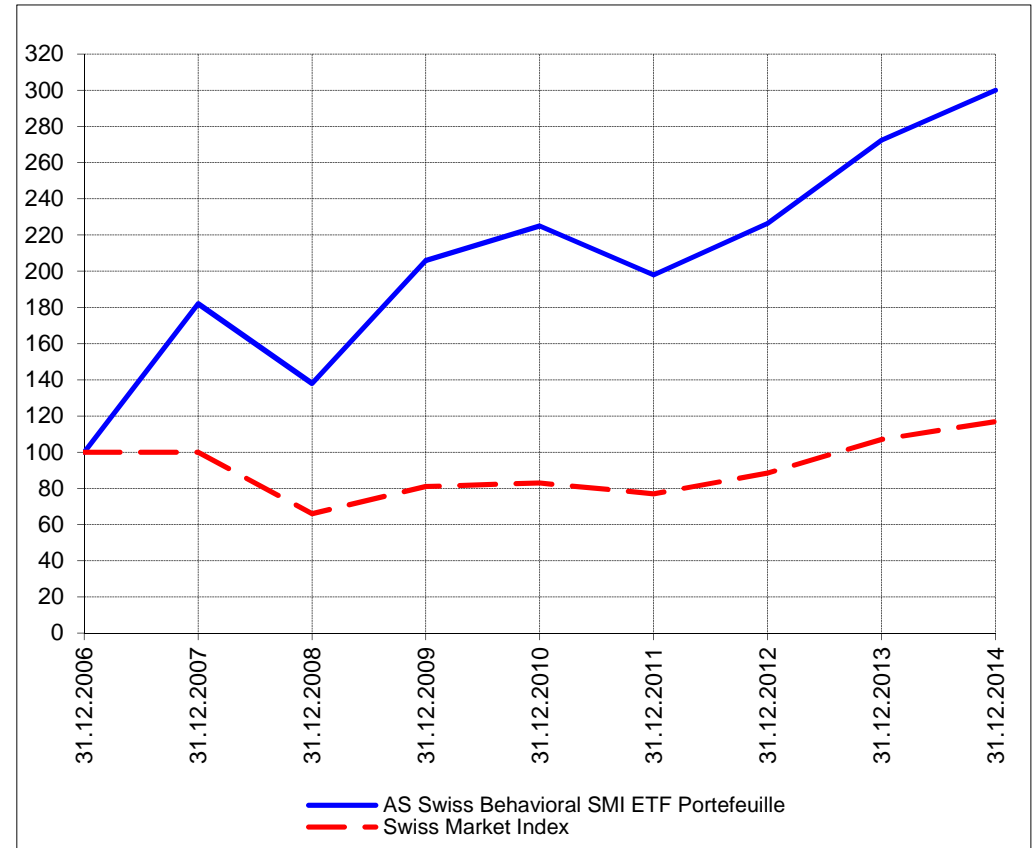
Perf. 12 derniers mois, indexée / Perf. der letzten 12 Monate, indexiert



Perf. depuis création / Perf. seit Lancierung: Global 01. 01. 1999



Perf. depuis création / Perf. seit Lancierung: Swiss 01. 01. 2007



Positions / Positionen différées de 3 mois / um 3 Monate verzögert	PowerShares QQQ	28.3%
	SPDR Homebuilders XHB	15.2%
	iShares Japan EWJ	14.2%
	SPDR S&P Biotech XBI	12.5%
	iShares U.S. Regional Banks IAT	10.3%
	SPDR Financial XLF	4.3%
	SPDR S&P 500 SPY	2.9%
	SPDR DJ Wilshire REIT RWR	2.2%

XMTCH 88.0%

Préservation / Werterhalt	Cash	10.1%
---------------------------	------	-------

Cash 12.0%

Caractéristique / Merkmal
1. Préservation / Werterhalt
2. Outperformance

1. Préservation / Werterhalt
2. Outperformance

Gestion / Management active with a Behavioral approach

active with a Behavioral approach

**Univers d'investissement /
Anlageuniversum**
World with region, country and sector ETF's only
no Derivatives/Options; **no** Investment Vehicles;
no Private Equity **nor any** other Financial product
no commodities

Swiss Performance Index
no Derivatives/Options; **no** Investment Vehicles;
no Private Equity **nor any** other Financial product
no commodities