

The closing prices (Cours de clôture/Tagesschlusskurse) show results gained after taking into account:  
 > all costs (trading, transactions, regulations, stock exchanges, taxes)  
 > all management fees

Date/Datum	Cours de clôture/Tagesschlusskurse		Swiss (CHF) CH0036308838 CT1248891 CORP	Benchmark Swiss Performance Index
	Global (USD) CH0034642923 CT1248933 CORP	Benchmark MSCI All Country World Index		
31.12.2009	490.28	299.44	pas de cours/geschlossen	5626.40
30.12.2009	495.05		2061.68	
29.12.2009	493.98		2075.49	
28.12.2009	495.76		2071.22	
25.12.2009	pas de cours/geschlossen		pas de cours/geschlossen	
24.12.2009	490.83		pas de cours/geschlossen	
23.12.2009	484.81		2064.25	
22.12.2009	482.82		2065.98	
21.12.2009	482.25		2051.99	
18.12.2009	477.86		2039.83	
17.12.2009	468.26		2044.82	
16.12.2009	480.37		2051.58	
15.12.2009	477.10		2034.66	
14.12.2009	480.70		2025.24	
11.12.2009	474.31		2028.16	
10.12.2009	474.46		2032.76	
09.12.2009	467.56		2016.36	
08.12.2009	464.40		2027.64	
07.12.2009	471.96		2071.87	
04.12.2009	474.73		2080.51	
03.12.2009	468.77		2059.44	
02.12.2009	470.37		2037.62	
01.12.2009	467.81		2030.90	
30.11.2009	457.97	293.67	2001.46	5388.37
<b>31.12.2008</b>	<b>366.17</b>	<b>227.68</b>	<b>1379.13</b>	<b>4567.57</b>

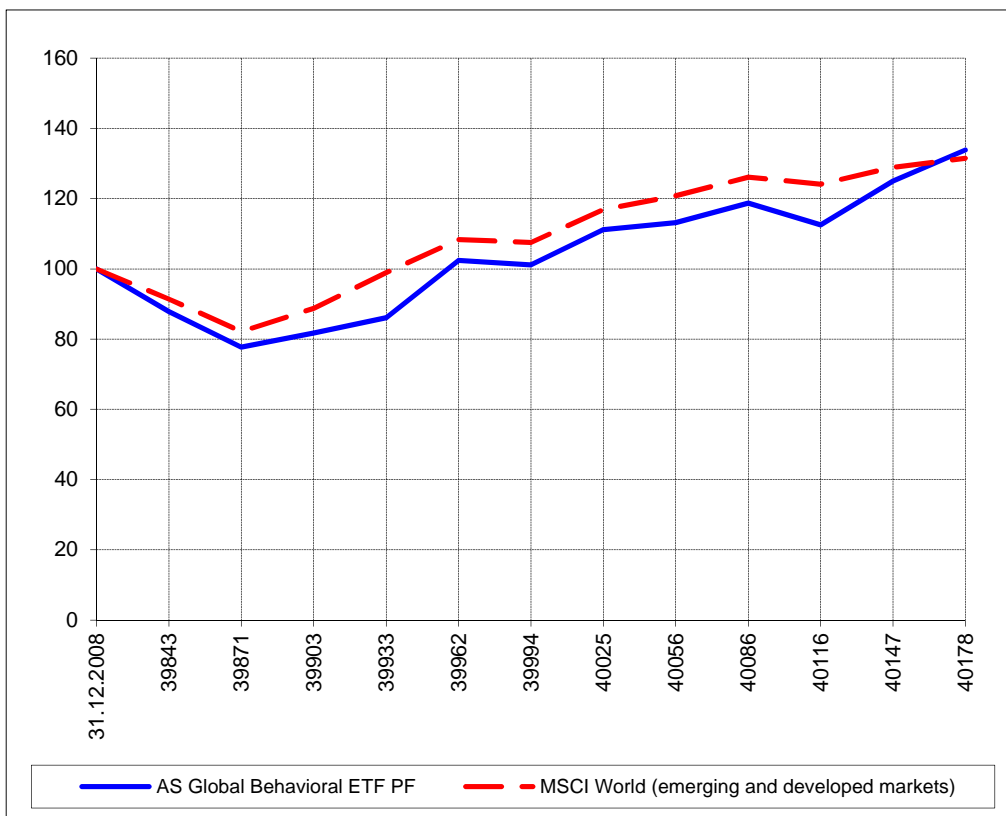
Portrait du Portefeuille Global / Global Portfolio im Überblick



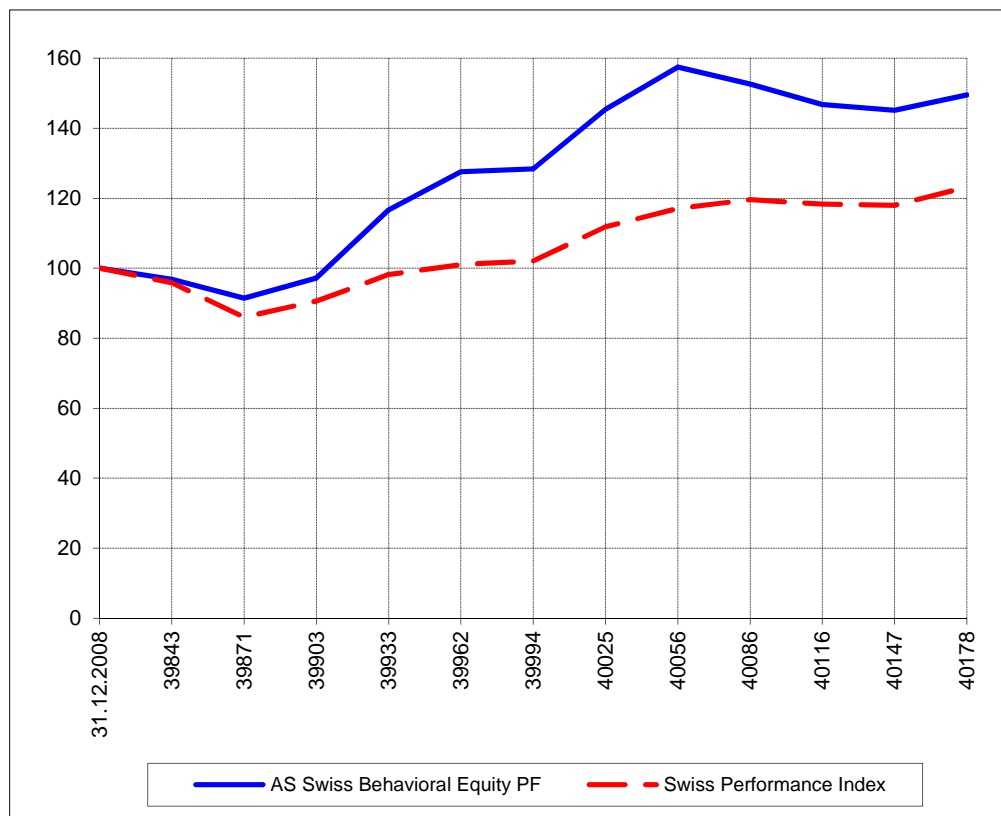
Portrait du Portefeuille Swiss / Swiss Portfolio im Überblick



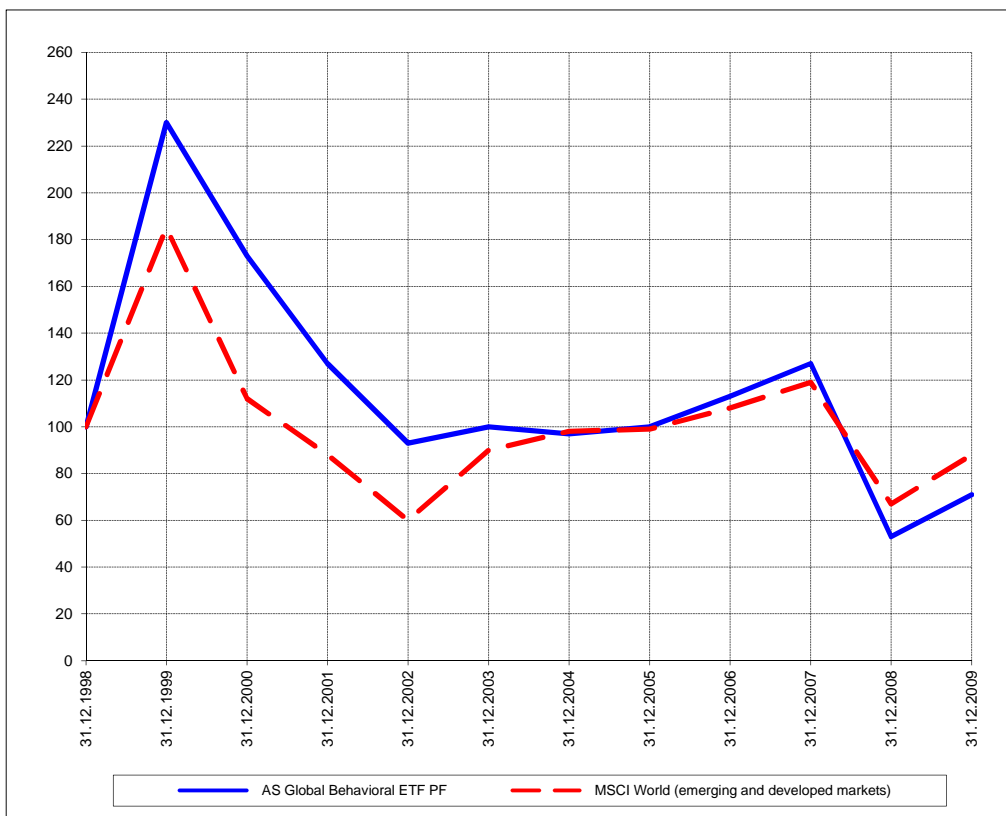
Perf. 12 derniers mois, indexée / Perf. 12 letzten Monaten, indexiert



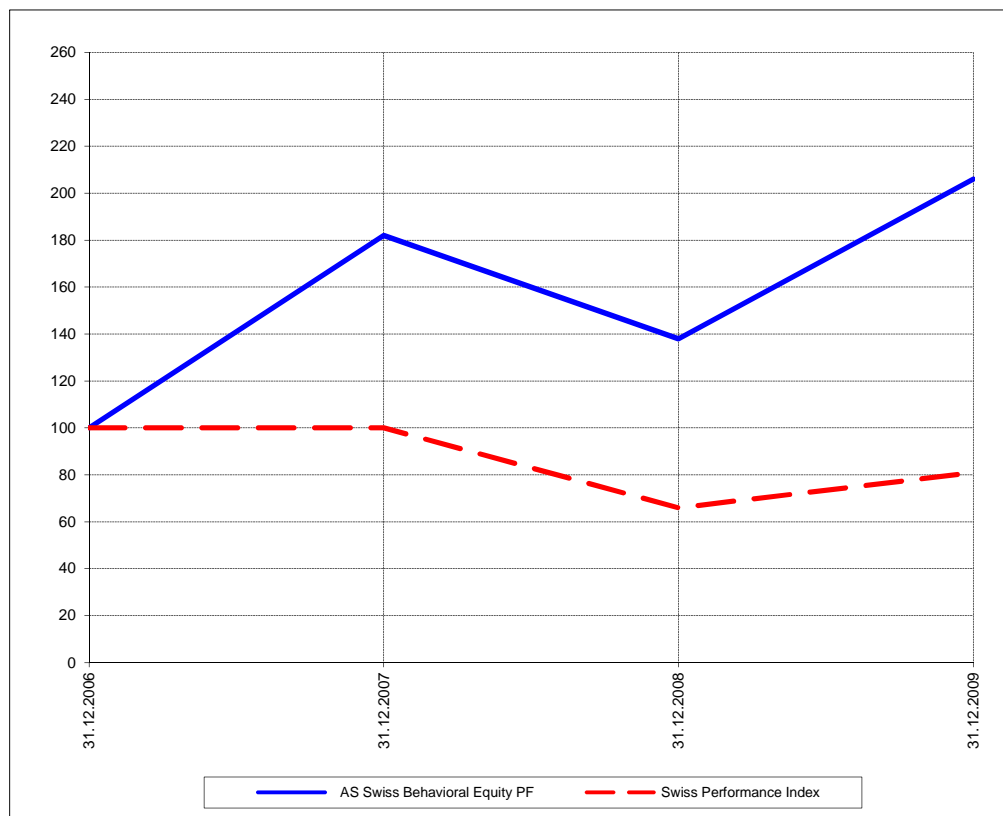
Perf. 12 derniers mois, indexée / Perf. 12 letzten Monaten, indexiert



Perf. depuis création / Perf. seit Lancierung: Global 01. 01. 1999



Perf. depuis création / Perf. seit Lancierung: Swiss 01. 01. 2007



<b>Positions / Positionen</b> différées de 3 mois / um 3 Monate verzögert	iShares Turkey TUR	14.9 %
	iShares South Korea EWY	15.4 %
	ProShares NASDAQ Index QLD	23.9 %
	SPDR S&P Homebuilders XHB	19.7 %
	SPDR DJ Wilshire REIT RWR	21.2 %

VZ	5.4 %
Meyer Burger	5.1 %
OC Oerlikon	5.0 %
Swatch	7.7 %
Ci Com	4.8 %
Arbonia	2.3 %
Kudelski	4.9 %
UBS	5.0 %
XMTCH	63.2 %

**Caractéristique / Merkmal** outperformance

outperformance

**Gestion / Management** active with a Behavioral approach

active with a Behavioral approach

**Univers d'investissement /  
Anlageuniversum** World with region, country and sector ETF's only  
**no** Derivatives/Options; **no** Investment Vehicles;  
**no** Private Equity **nor any** other Financial product  
**no** commodities

Swiss Performance Index  
**no** Derivatives/Options; **no** Investment Vehicles;  
**no** Private Equity **nor any** other Financial product  
**no** commodities