

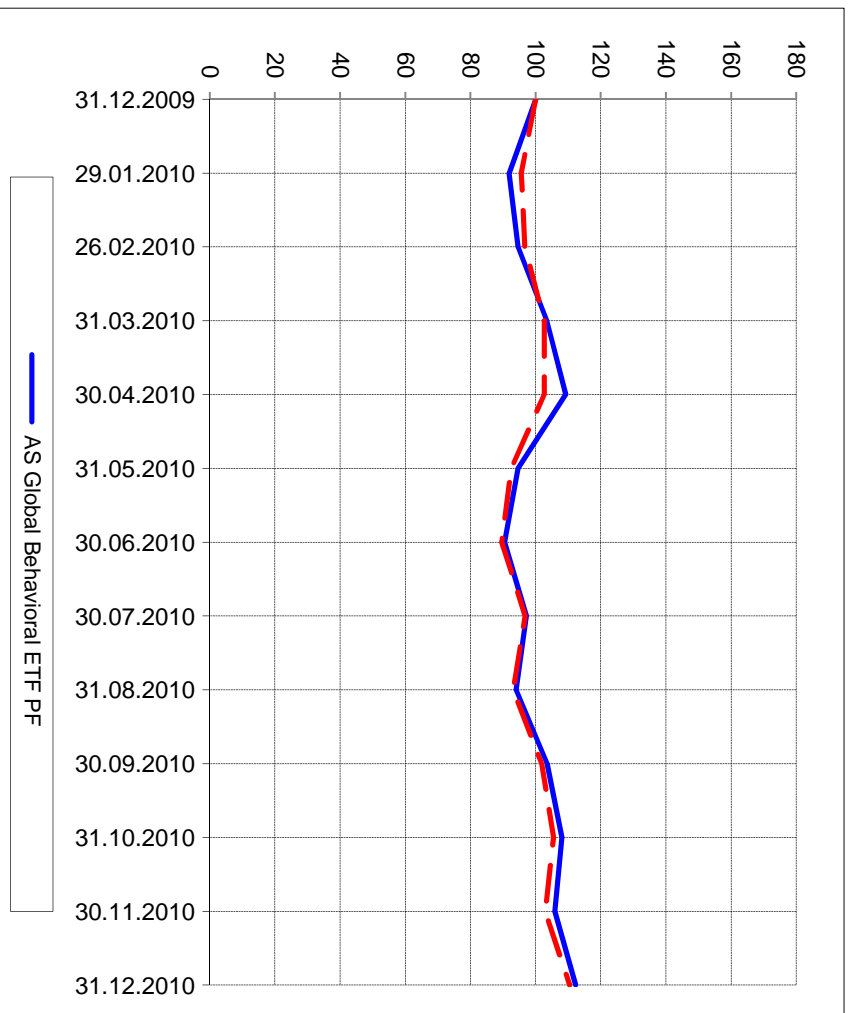
The closing prices (Cours de clôture/Tagesschlusskurse) show results gained after taking into account:
 > all costs (trading, transactions, regulations, stock exchanges, taxes)
 > all management fees

Date/Datum	Cours de clôture/Tagesschlusskurse		Cours de clôture/Tagesschlusskurse	
	Global (USD) CH0034642923 CT1248933 CORP	Benchmark MSCI All Country World Index	Swiss (CHF) CH0036308838 CT1248891 CORP	Benchmark Swiss Performance Index
31.12.2010	550.55	330.64	pas de cours/geschlossen	pas de cours/geschlossen
30.12.2010	550.85		2250.31	5790.62
29.12.2010	552.19		2293.00	
28.12.2010	551.35		2290.46	
27.12.2010	551.36		2284.94	
24.12.2010	pas de cours/geschlossen		pas de cours/geschlossen	
23.12.2010	550.99		2303.22	
22.12.2010	552.53		2294.08	
21.12.2010	550.93		2294.16	
20.12.2010	547.44		2280.56	
17.12.2010	546.38		2283.55	
16.12.2010	545.98		2289.38	
15.12.2010	542.05		2292.37	
14.12.2010	544.97		2290.31	
13.12.2010	544.97		2282.65	
10.12.2010	546.00		2279.03	
09.12.2010	541.31		2287.60	
08.12.2010	540.94		2278.79	
07.12.2010	539.02		2266.96	
06.12.2010	539.09		2250.04	
03.12.2010	539.12		2252.53	
02.12.2010	537.87		2261.92	
01.12.2010	530.73		2238.56	
30.11.2010	519.41	308.38	2204.30	5652.48
31.12.2009	490.28	299.44	2061.68	5626.40

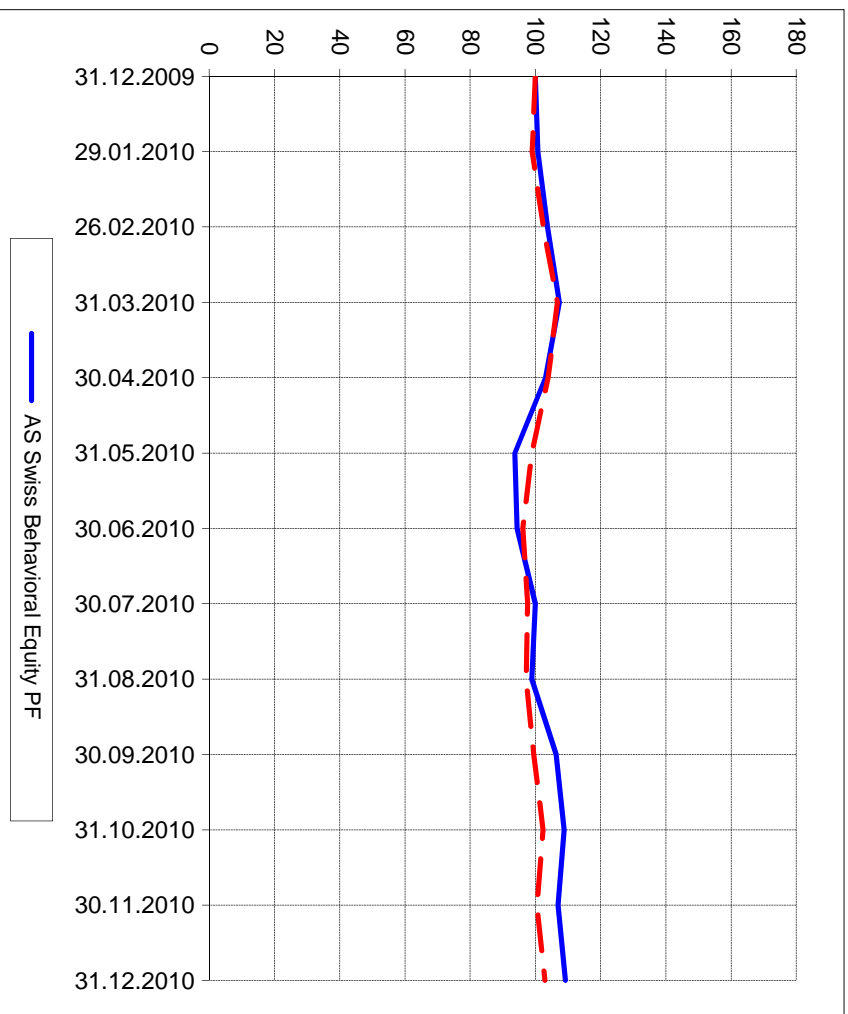
Portrait du Portefeuille Global / Global Portfolio im Überblick

Portrait du Portefeuille Swiss / Swiss Portfolio im Überblick

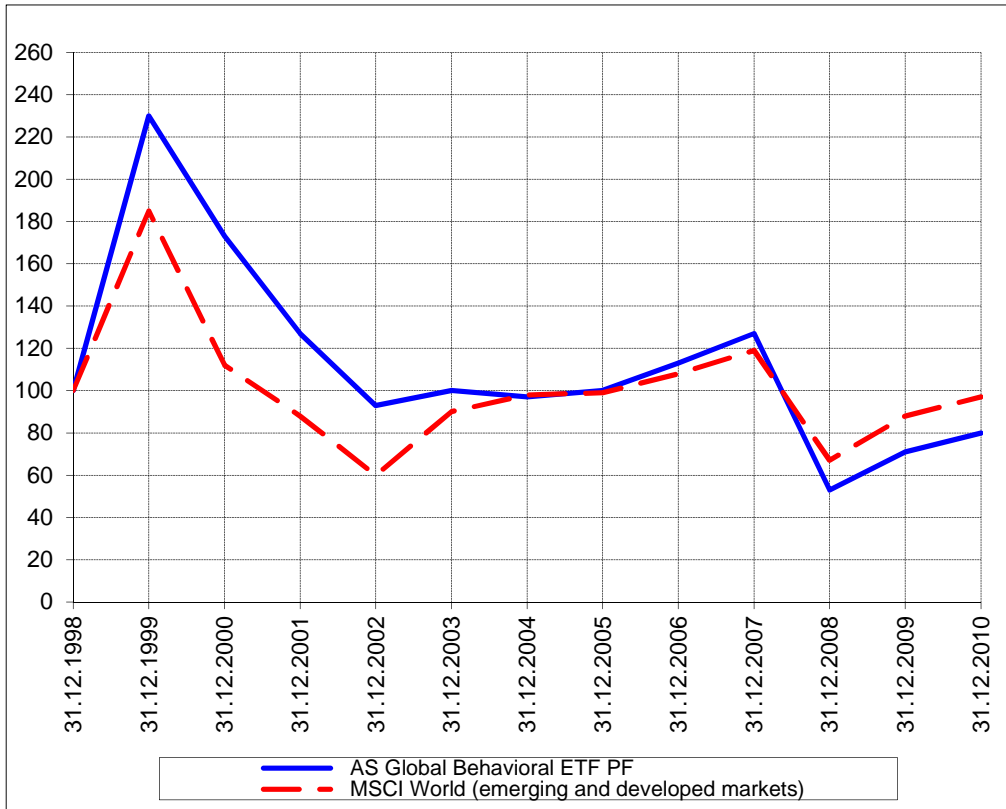
Perf. 12 derniers mois, indexée / Perf. 12 letzten Monaten, indexiert



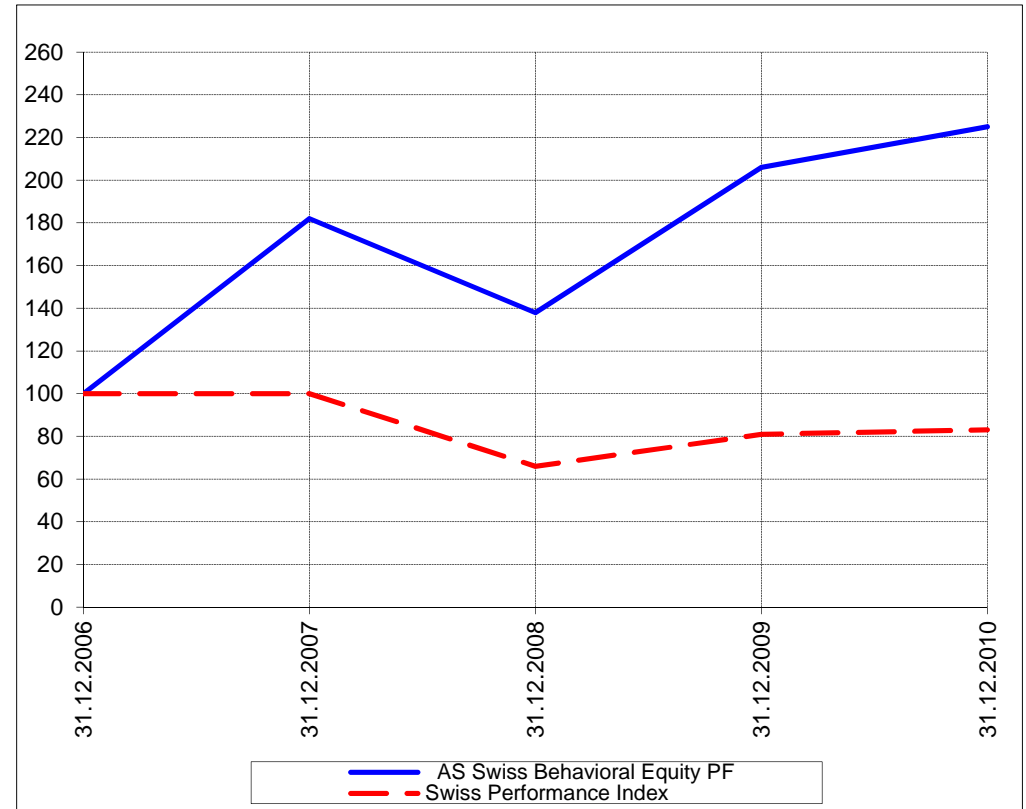
Perf. 12 derniers mois, indexée / Perf. 12 letzten Monaten, indexiert



Perf. depuis création / Perf. seit Lancierung: Global 01. 01. 1999



Perf. depuis création / Perf. seit Lancierung: Swiss 01. 01. 2007



Positions / Positionen différées de 3 mois / um 3 Monate verzögert	iShares Turkey TUR	21.2%
	iShares South America ILF	20.7%
	SPDR DJ Wilshire REIT RWR	19.6%
	iShares South Africa EZA	14.0%
	iShares Emerging Markets EEM	10.1%
	ProShares Real Estate URE	8.0%
	ProShares NASDAQ Index QLD	4.9%

XMTCH	78.0%
Ublox	5.5%
Walter Meyer	5.9%
Forbo	5.4%
Schindler	5.5%

Caractéristique / Merkmal outperformance

outperformance

Gestion / Management active with a Behavioral approach

active with a Behavioral approach

**Univers d'investissement /
Anlageuniversum** World with region, country and sector ETF's only
no Derivatives/Options; **no** Investment Vehicles;
no Private Equity **nor any** other Financial product
no commodities

Swiss Performance Index
no Derivatives/Options; **no** Investment Vehicles;
no Private Equity **nor any** other Financial product
no commodities