

The closing prices (Cours de clôture/Tagesschlusskurse) show results gained after taking into account:  
 > all costs (trading, transactions, regulations, stock exchanges, taxes)  
 > all management fees

# AS

Asset Services SA

Date/Datum	<u>Sentiment-Exposure-Index</u> (approx.)		<u>GLOBAL</u>		<u>SWISS</u>	
	Investi / Investiert	Cash	NAV (USD) CH0034642923 CT1248933 CORP	Benchmark MSCI All Country World Index	NAV (CHF) CH0036308838 CT1248891 CORP	Benchmark Swiss Market Index
31.12.2012			576.59	339.75	pas de cours/geschlossen	
28.12.2012			567.07		2264.73	6822.44
27.12.2012			571.07		2280.67	
26.12.2012			568.95		pas de cours/geschlossen	
25.12.2012			pas de cours/geschlossen		pas de cours/geschlossen	
24.12.2012			569.65		pas de cours/geschlossen	
21.12.2012			570.78		2286.92	
20.12.2012			577.44		2291.98	
19.12.2012			577.10		2304.77	
18.12.2012			581.11		2298.73	
17.12.2012			574.34		2292.12	
14.12.2012			565.98		2291.54	
13.12.2012			568.63		2296.53	
12.12.2012			572.07		2309.75	
11.12.2012			569.38		2313.92	
10.12.2012			566.27		2304.36	
07.12.2012			564.16		2295.38	
06.12.2012			563.77		2293.35	
05.12.2012			563.83		2275.72	
04.12.2012			566.91		2277.16	
03.12.2012			566.09		2273.42	
30.11.2012			567.71	332.64	2266.23	6820.60
<b>30.12.2011</b>			<b>477.20</b>	<b>299.51</b>	<b>1979.61</b>	<b>5936.23</b>

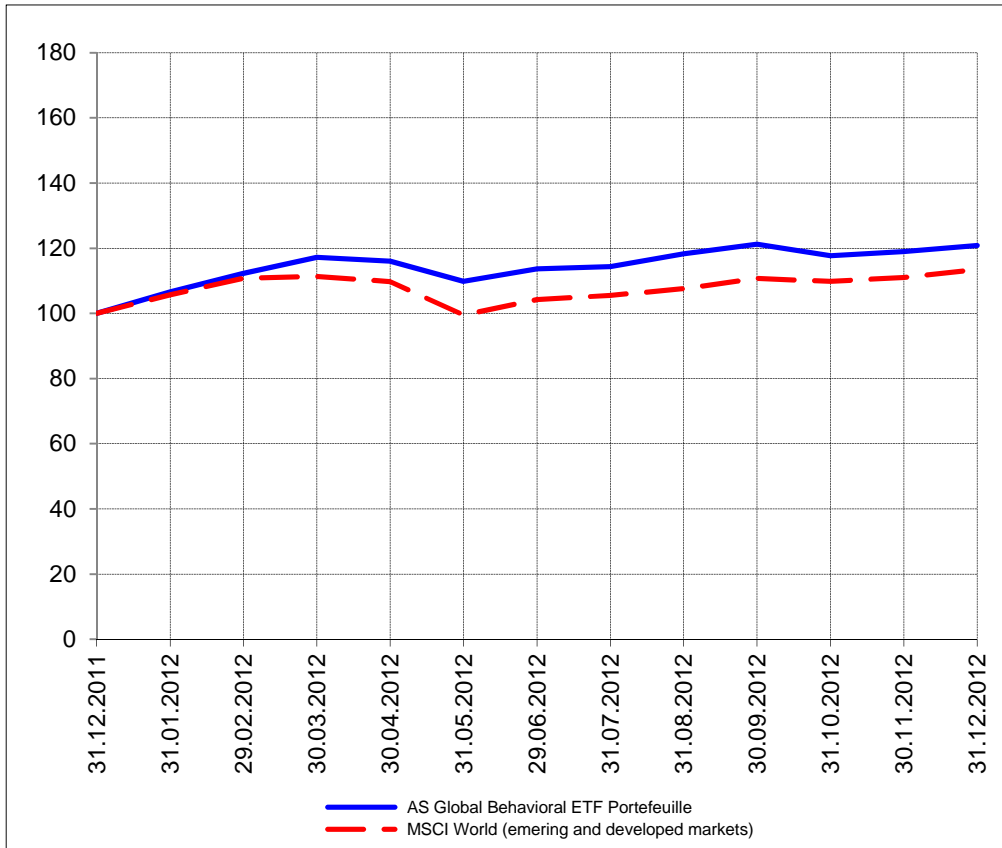
Portrait du Portefeuille Global / Global Portfolio im Überblick

Portrait du Portefeuille Swiss / Swiss Portfolio im Überblick

**GLOBAL**



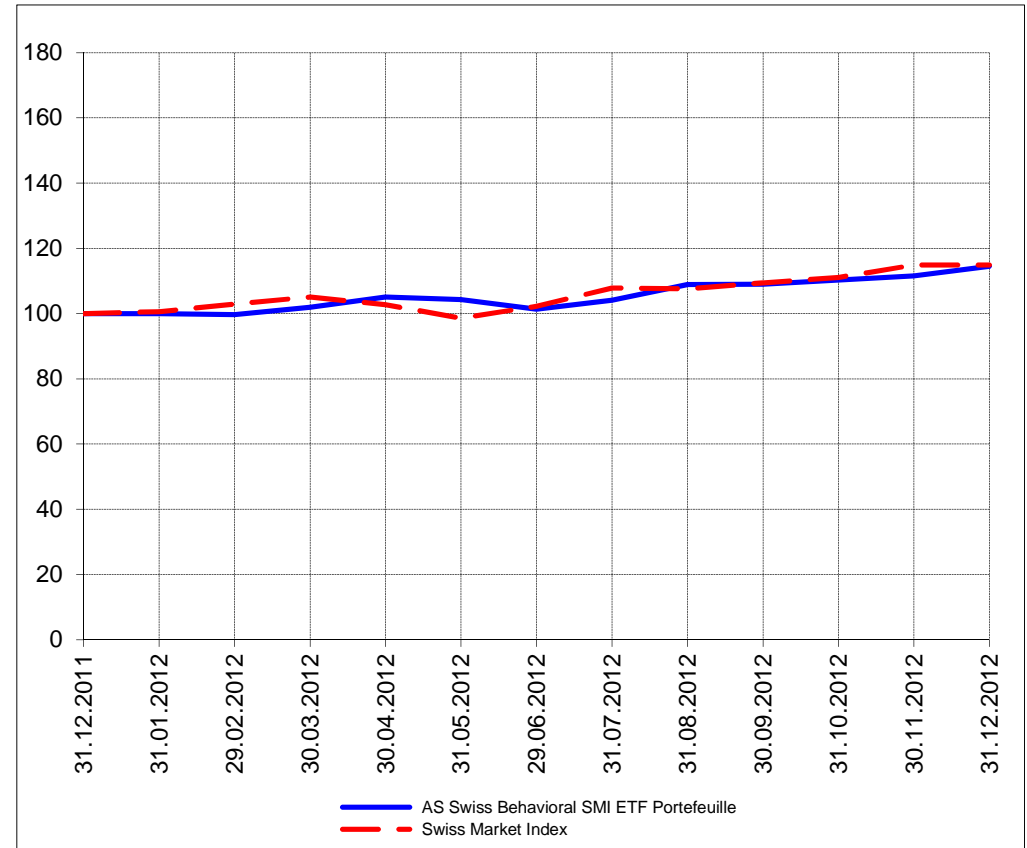
Perf. 12 derniers mois, indexée / Perf. der 12 letzten Monate, indexiert



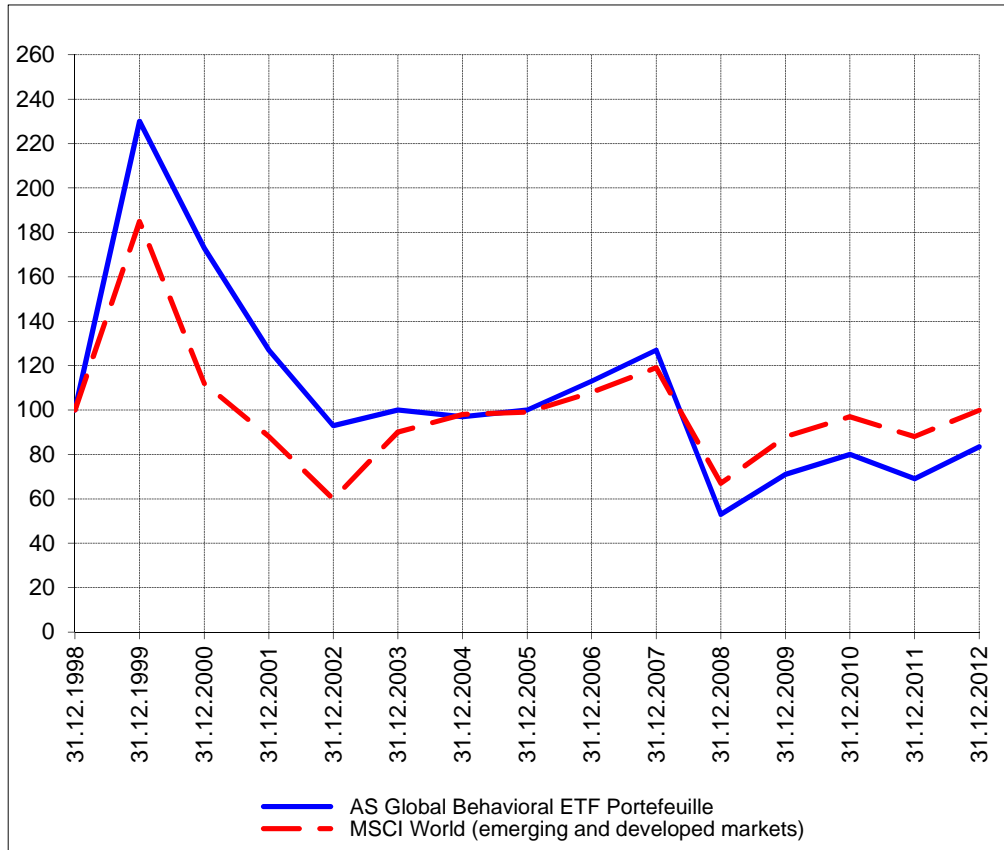
**SWISS**



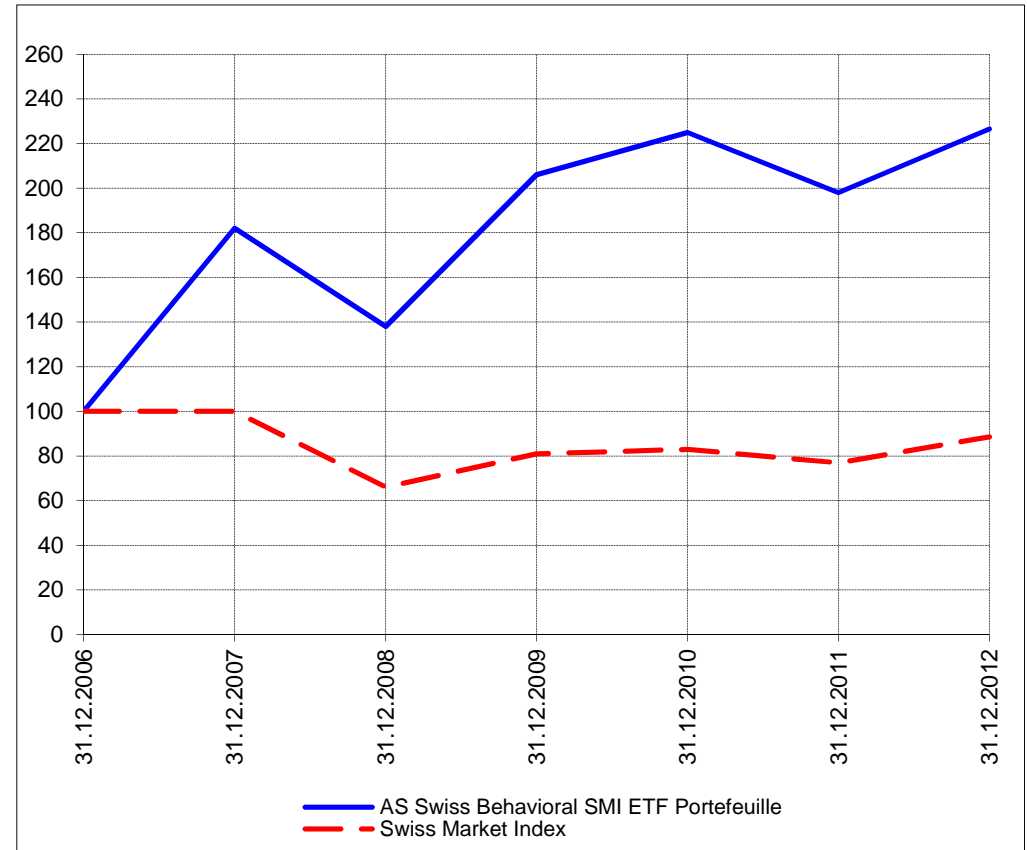
Perf. 12 derniers mois, indexée / Perf. der letzten 12 Monate, indexiert



Perf. depuis création / Perf. seit Lancierung: Global 01. 01. 1999



Perf. depuis création / Perf. seit Lancierung: Swiss 01. 01. 2007



<b>Positions / Positionen</b> différées de 3 mois / um 3 Monate verzögert	SPDR Homebuilders XHB	20.4%
	SPDR Biotech XBI	17.9%
	PowerShares QQQ	11.7%
	iShares US Regionals Banks IAT	10.1%
	ProShares NASDAQ Index QLD	9.6%
	SPDR S&P 500 SPY	7.8%
	Vanguard World Stock Index VT	2.5%

XMTCH 87.6%

**Caractéristique / Merkmal**

1. Préservation / Werterhalt  
2. Outperformance

1. Préservation / Werterhalt  
2. Outperformance

**Gestion / Management** active with a Behavioral approach

active with a Behavioral approach

**Univers d'investissement /  
Anlageuniversum**

World with region, country and sector ETF's only  
**no** Derivatives/Options; **no** Investment Vehicles;  
**no** Private Equity **nor any** other Financial product  
**no** commodities

Swiss Performance Index  
**no** Derivatives/Options; **no** Investment Vehicles;  
**no** Private Equity **nor any** other Financial product  
**no** commodities