










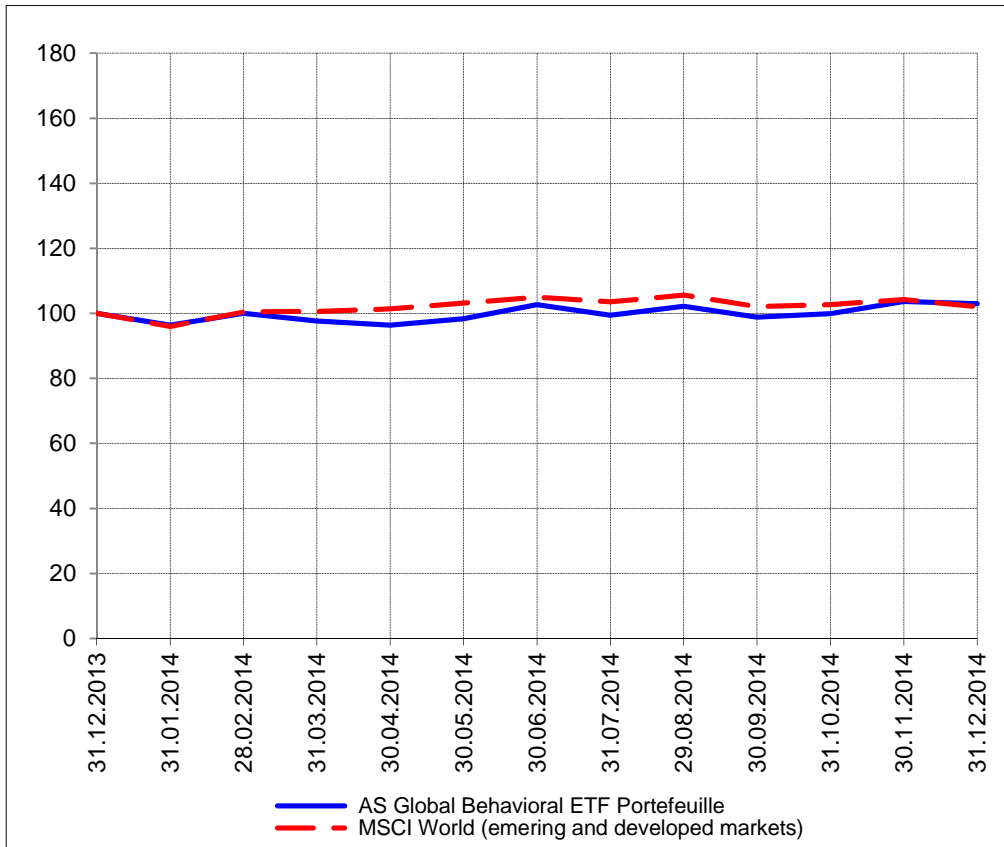
The closing prices (Cours de clôture/Tagesschlusskurse) show results gained after taking into account:
 > all costs (trading, transactions, regulations, stock exchanges, taxes)
 > all management fees

Date/Datum	<u>Sentiment-Exposure-Index</u> (approx.)		<u>GLOBAL</u>		<u>SWISS</u>	
	Investi / Investiert	Cash	NAV (USD)	Benchmark	NAV (CHF)	Benchmark
			CH0034642923 CT1248933 CORP	MSCI All Country World Index	CH0036308838 CT1248891 CORP	Swiss Market Index
31.12.2014			730.70	417.12	pas de cours/geschlossen	
30.12.2014			737.96		2998.24	8983.37
29.12.2014			740.34		3013.56	
26.12.2014			740.21		pas de cours/geschlossen	
25.12.2014			pas de cours/geschlossen		pas de cours/geschlossen	
24.12.2014			737.36		3016.94	
23.12.2014			736.87		3015.33	
22.12.2014			736.57		3018.99	
19.12.2014			733.08		3000.52	
18.12.2014			732.48		3014.60	
17.12.2014			716.93		2941.29	
16.12.2014			705.44		2945.67	
15.12.2014			710.67		2916.26	
12.12.2014			716.29		2970.32	
11.12.2014			726.52		3032.30	
10.12.2014			723.28		3018.52	
09.12.2014			734.73		3026.85	
08.12.2014			734.84		3075.58	
05.12.2014			740.58		3081.39	
04.12.2014			738.42		3049.76	
03.12.2014			738.94		3063.64	
02.12.2014			734.97		3058.16	
01.12.2014			730.06		3056.86	
28.11.2014			735.91	425.82	3060.74	9150.46
31.12.2013			709.76	408.55	2724.70	8202.98

Portrait du Portefeuille Global / Global Portfolio im Überblick

GLOBAL

Perf. 12 derniers mois, indexée / Perf. der 12 letzten Monate, indexiert

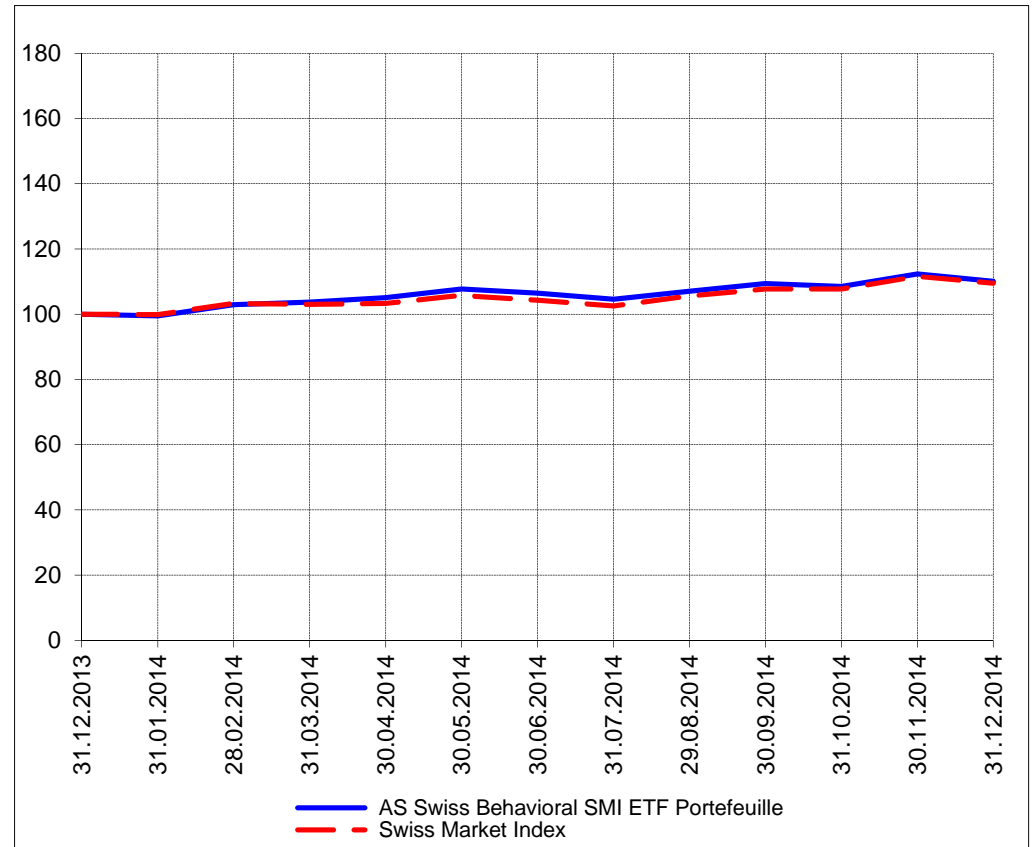


Portrait du Portefeuille Swiss / Swiss Portfolio im Überblick

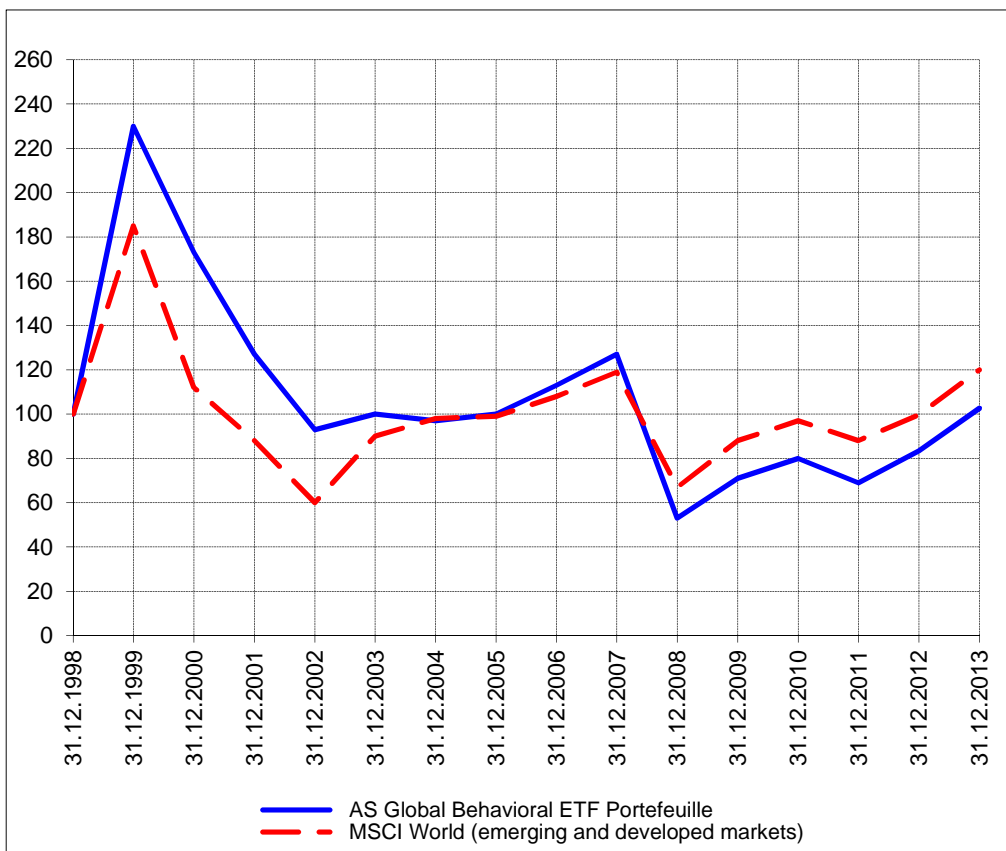
SWISS



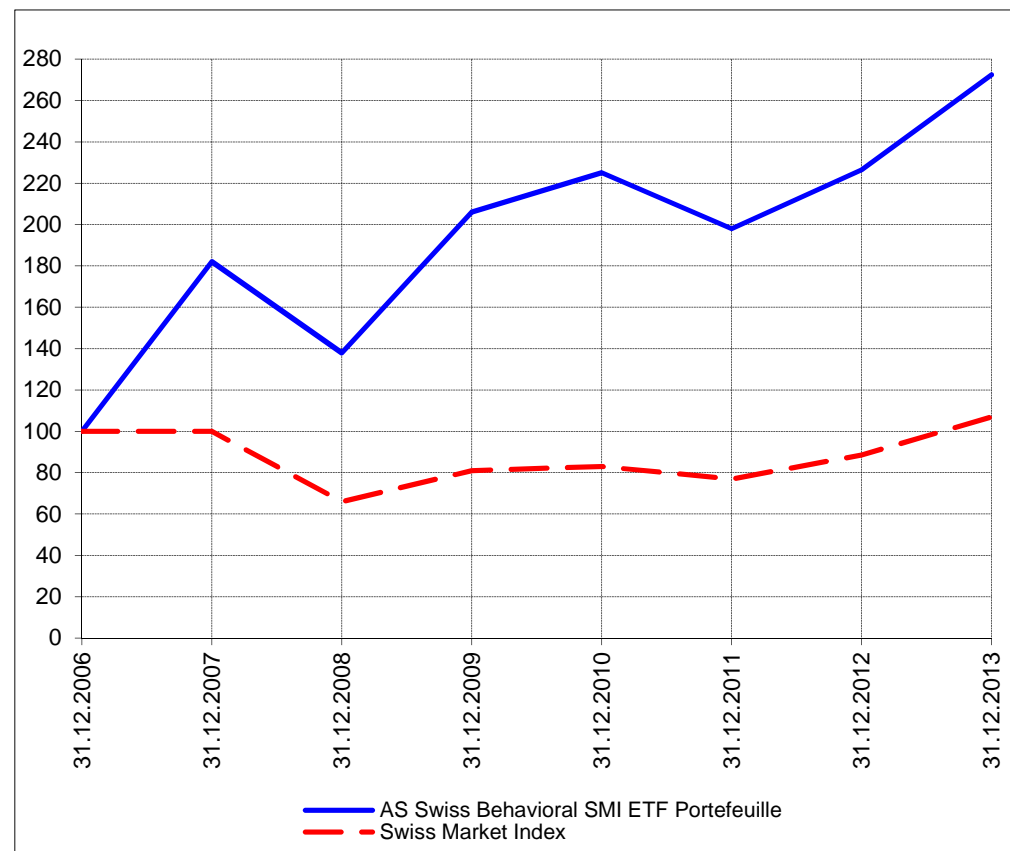
Perf. 12 derniers mois, indexée / Perf. der letzten 12 Monate, indexiert



Perf. depuis création / Perf. seit Lancierung: Global 01. 01. 1999



Perf. depuis création / Perf. seit Lancierung: Swiss 01. 01. 2007



Positions / Positionen différées de 3 mois / um 3 Monate verzögert	Ultra S&P 500 ProShares SSO	20.5%
	iShares Semi Conductor SOXX	12.9%
	iShares China FXI	11.3%
	iShares MSCI BRIC BKF	11.3%
	PowerShares QQQ	9.3%
	SPDR S&P 500 SPY	2.1%

XMTCH 92.4%

Préservation / Werterhalt	Cash	32.8%
---------------------------	------	-------

Cash 7.6%

Caractéristique / Merkmal
1. Préservation / Werterhalt
2. Outperformance

1. Préservation / Werterhalt
2. Outperformance

Gestion / Management
active with a Behavioral approach

active with a Behavioral approach

**Univers d'investissement /
Anlageuniversum**
World with region, country and sector ETF's only
no Derivatives/Options; **no** Investment Vehicles;
no Private Equity **nor any** other Financial product
no commodities

Swiss Performance Index
no Derivatives/Options; **no** Investment Vehicles;
no Private Equity **nor any** other Financial product
no commodities